

# Daily Market Information Report



The following information is collected from various sources and disseminated by the Ontario Cattlemen's Association.

**Friday June 12, 2009**

## ONTARIO DIRECT TO PACKER RAILGRADE PRICES

Prices are on a carcass weight basis, before grade and weight discounts.

**A grade steers** 157.00-165.00  
**A grade heifers** 156.00-164.00

## ONTARIO LIVE CATTLE TRADE

Today at: **Brussels Livestock** : 844 stockers

STEERS	Price Range	Avg	Top	HEIFERS	Price Range	Avg	Top
1000+	95.50-97.50	96.29	97.50	900+	87.00-93.25	90.20	96.00
900-999	93.50-99.25	96.84	99.25	800-899	91.00-96.50	94.47	103.00
800-899	94.50-103.25	100.98	104.00	700-799	98.50-106.00	102.49	109.00
700-799	100.00-109.00	103.92	110.00	600-699	98.00-111.50	106.75	112.50
600-699	97.00-120.00	108.64	120.00	500-599	104.00-117.00	109.98	118.00
500-599	115.00-133.00	124.19	134.00	400-499	106.00-121.00	115.05	121.00
400-499	116.00-140.00	129.15	144.00	300-399	96.00-115.00	108.30	115.00
399-	125.00-151.00	144.00	151.00				

Calves traded at prices \$3.00-\$5.00 higher while yearlings sold on a steady market.

Ontario Auction Sales on **Thursday** saw weighted prices for:

	Price Range	Avg.	Top
Large & Medium Frame Fed Steers +1250	84.00-104.50	93.59	110.00
Large & Medium Frame Fed Heifers +1000	81.33-99.29	91.91	100.00
Cows	38.16-54.20	46.40	90.00
Bulls	52.89-66.77	59.12	83.00
Veal calves 600 lbs +	69.30-106.69	81.23	136.00
Veal calves 125 lbs & under	119.00-160.00	141.06	167.00

Stocker Sale at: **Ontario Livestock Exchange, June 11, 2009** – 174 stockers

STEERS	Price Range	Avg	Top	HEIFERS	Price Range	Avg	Top
700-799	76.00-98.00	90.56	107.00	600-699	96.00-106.00	102.18	110.00
600-699	31.00-109.00	61.12	112.00	500-599	95.00-118.00	110.23	118.00
500-599	105.00-130.00	116.59	130.00	400-499	96.00-115.00	103.73	118.00
400-499	95.00-115.00	104.30	125.00				
399-	113.00-122.00	115.33	122.00				

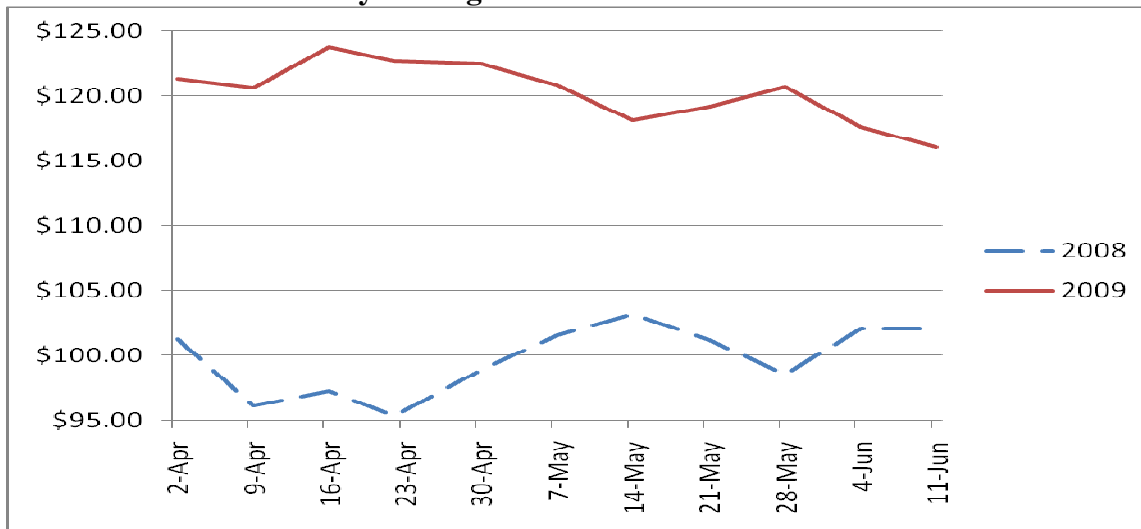
Stocker Sale at: **Ontario Stockyards Inc, June 11, 2009**- 404 stockers

STEERS	Price Range	Avg	Top	HEIFERS	Price Range	Avg	Top
1000+	75.00-89.00	83.02	89.00	900+	72.00-83.00	78.40	85.50
900-999	77.00-89.00	86.81	89.00	800-899	78.00-87.00	83.20	87.00
800-899	83.00-104.00	93.22	109.50	700-799	85.00-99.00	94.21	105.00
700-799	87.00-112.50	101.25	112.50	600-699	97.00-111.00	105.98	118.00
600-699	99.00-115.00	107.72	123.00	500-599	103.00-123.50	112.64	125.00
500-599	102.00-118.00	112.67	125.00	400-499	100.00-119.00	108.69	144.00
400-499	104.00-126.00	115.42	136.00	300-399	91.00-117.00	110.26	117.00
399-	65.00-119.00	89.81	119.00				

Stocker Sale at: **Ottawa Livestock Exchange, June 11, 2009-** 140 stockers

<b>STEERS</b>	Price Range	Avg	Top	<b>HEIFERS</b>	Price Range	Avg	Top
<b>700-799</b>	94.00-116.00	105.57	116.00	<b>700-799</b>	82.00-88.00	85.56	94.00
<b>600-699</b>	103.00-125.00	109.73	125.00	<b>600-699</b>	90.00-103.00	97.17	103.00
<b>500-599</b>	81.00-123.00	103.50	123.00	<b>500-599</b>	92.00-108.00	99.50	116.00
<b>400-499</b>	123.00-133.00	126.20	133.00	<b>400-499</b>	91.00-111.00	102.90	127.00
<b>399-</b>	104.00-147.00	126.26	147.00	<b>299-</b>	120.00-148.00	133.00	148.00

**Weekly Average Price for Steers 500-599 lbs.**



**QUEBEC ELECTRONIC AUCTION MARKET**

For the week ending **June 11, 2009** **Price Range**  
**A1, A2 Steers & Heifers** **159.00-165.00**

**ALBERTA DIRECT TRADE**

Alberta direct trade on Thursday was light with prices steady to Wednesday's higher market. This week's prices are as follows:

<b>Steers</b>	<b>Live</b>	<b>85.35-87.35</b>	<b>Flat rail</b>	<b>143.85-145.00</b>
<b>Heifers</b>	<b>Live</b>	<b>85.25-87.35</b>	<b>Flat rail</b>	<b>144.00-144.85</b>

**U.S. TRADE** (U.S. funds)

US cash cattle was moderate to active in all areas this afternoon. Northern business was \$1.00 lower while southern trade was fully steady to last week.

<b>Choice and select steers and heifers:</b>	Live	<b>81.50-82.00</b>
	Rail	<b>131.00</b>

**U.S. BOXED BEEF CUT-OUT VALUES** (U.S. funds)

	<b>Choice</b>	<b>Select</b>
<b>Cutout Values:</b> (noon estimate)	<b>138.51</b>	<b>132.71</b>
<b>Change:</b> (from yesterday's close)	<b>-0.78</b>	<b>+0.03</b>
<b>Current 5 day average:</b>	<b>139.75</b>	<b>133.05</b>

## CHICAGO MERCANTILE EXCHANGE

Closing quotes on futures today were as follows:

<b>Live Cattle</b>			<b>Feeder Cattle</b>			<b>Corn</b>		<b>Soybeans</b>		<b>Canadian \$</b>				
\$/cwt US			\$/cwt US			\$/bu US	¢/bu	\$/bu US	¢/bu					
<b>Jun</b>	80.47	+0.37	<b>Aug</b>	97.57	+1.20	<b>Jul</b>	4.254	-15.4	<b>Jul</b>	12.454	-21.4	<b>Spot</b>	89.41	-1.70
<b>Aug</b>	81.60	+0.15	<b>Sep</b>	97.57	+0.97	<b>Sep</b>	4.344	-15.4	<b>Aug</b>	11.712	-14.2	<b>Jun</b>	89.39	-1.72
<b>Oct</b>	87.10	+0.15	<b>Oct</b>	98.62	+1.42	<b>Dec</b>	4.476	-15.4	<b>Sep</b>	11.084	-16.2	<b>Sep</b>	89.44	-1.72
<b>Dec</b>	88.82	-0.07	<b>Nov</b>	98.32	+0.45	<b>Mar</b>	4.594	-14.6	<b>Nov</b>	10.764	-13.2	<b>Dec</b>	89.54	-1.70
<b>Feb</b>	90.27	-0.52	<b>Jan</b>	98.00	+1.50	<b>May</b>	4.670	-14.6	<b>Jan</b>	10.830	-13.0	<b>Mar</b>	89.67	-1.70
<b>Apr</b>	92.20	-0.37	<b>Mar</b>	96.00	+0.10	<b>Jul</b>	4.744	-14.4	<b>Mar</b>	10.794	-13.2	<b>Jun</b>	89.80	-1.70

Ontario Cattlemen's Association, 130 Malcolm Rd., Guelph, ON N1K 1B1 Phone: (519) 824-0334 Fax: (519) 824-1930 or email:

[mktinfo@cattle.guelph.on.ca](mailto:mktinfo@cattle.guelph.on.ca)