

Daily Market Information Report

The following information is collected from various sources and disseminated by the Ontario Cattlemen's Association.

Friday June 19, 2009

ONTARIO DIRECT TO PACKER RAILGRADE PRICES

Prices are on a carcass weight basis, before grade and weight discounts.

A grade steers 157.00-162.00
A grade heifers 156.00-161.00

ONTARIO LIVE CATTLE TRADE

Today at: **Brussels Livestock** : 899 stockers

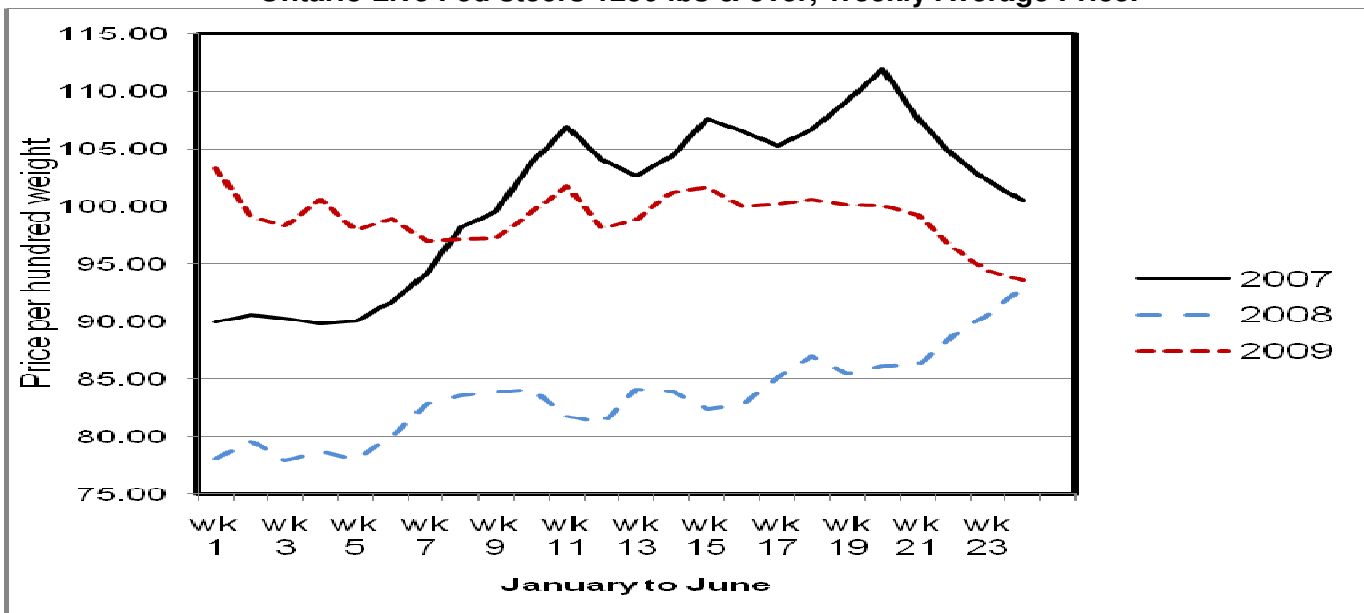
STEERS	Price Range	Avg	Top	HEIFERS	Price Range	Avg	Top
1000+	94.00-96.35	94.82	97.00	900+	89.50-96.10	93.57	96.85
900-999	88.00-97.25	92.64	97.25	800-899	93.00-100.00	95.42	104.50
800-899	97.00-108.50	102.88	108.50	700-799	95.00-109.00	103.56	109.00
700-799	100.00-117.75	112.36	117.75	600-699	103.25-116.00	110.54	120.00
600-699	103.75-124.50	115.60	130.00	500-599	97.00-116.00	108.54	127.00
500-599	112.00-131.00	123.86	133.00	400-499	95.00-122.00	112.22	129.00
400-499	118.00-133.50	125.65	133.50				
399-	126.00-137.00	130.44	137.00				

Both calves and yearlings sold on a very strong active trade.

Ontario Auction Sales on **Thursday** saw weighted prices for:

	Price Range	Avg.	Top
Large & Medium Frame Fed Steers +1250	85.92-101.09	92.23	103.00
Large & Medium Frame Fed Heifers +1000	74.61-94.44	87.88	99.50
Cows	42.05-57.19	50.23	73.50
Bulls	58.55-72.55	62.93	80.00
Veal calves 600 lbs +	63.39-114.49	85.19	135.00
Veal calves 125 lbs & under	89.00-147.00	125.22	151.00

Ontario Live Fed steers 1250 lbs & over, Weekly Average Price.



Stocker Sale at: **Ontario Livestock Exchange, June 18, 2009** – 135 stockers

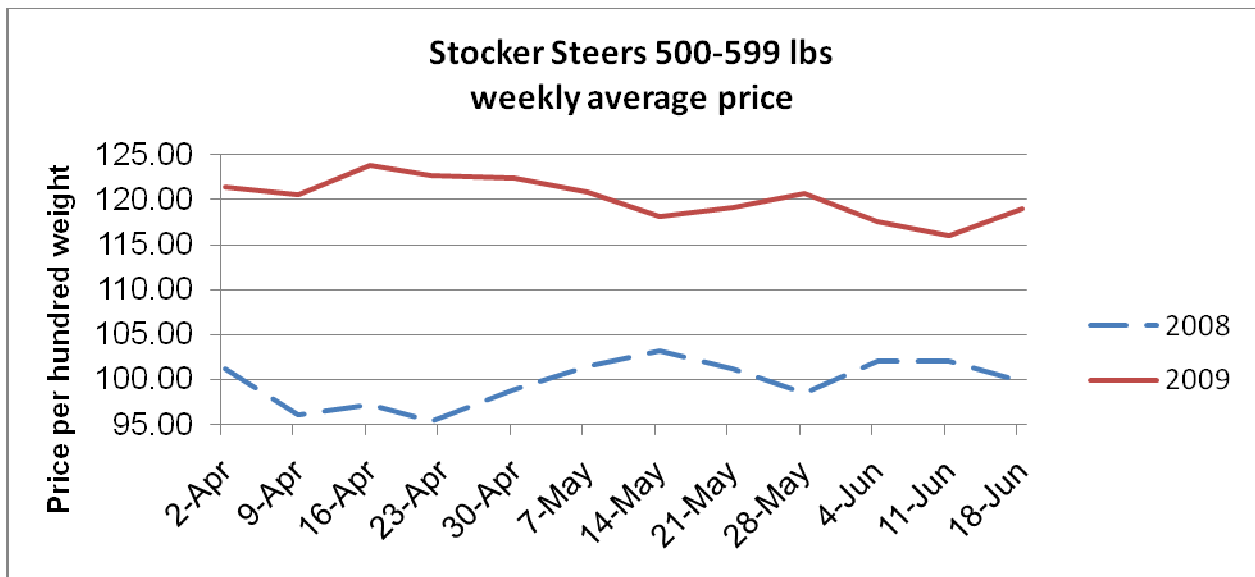
STEERS	Price Range	Avg	Top	HEIFERS	Price Range	Avg	Top
800-899	91.00-98.50	94.00	98.50	700-799	73.00-105.00	92.45	105.00
600-699	79.00-120.00	98.93	120.00	500-599	100.00-110.00	104.00	110.00
500-599	117.00-128.00	120.20	132.50				
400-499	102.00-133.00	113.15	133.00				

Stocker Sale at: **Ontario Stockyards Inc, June 18, 2009**- 715 stockers

STEERS	Price Range	Avg	Top	HEIFERS	Price Range	Avg	Top
1000+	64.00-91.50	76.76	94.50	900+	74.50-92.50	84.31	92.50
900-999	91.00-100.00	95.59	100.00	800-899	84.50-89.00	88.37	89.00
800-899	95.50-117.00	112.56	117.00	700-799	84.00-104.50	96.70	104.50
700-799	106.50-119.00	117.03	119.00	600-699	102.00-115.25	109.10	115.25
600-699	103.00-121.75	115.06	121.75	500-599	104.00-114.75	109.03	114.75
500-599	105.00-128.00	116.93	130.00	400-499	106.00-117.00	112.05	117.00
400-499	118.50-128.00	122.63	135.00	300-399	102.00-115.50	111.01	115.50
399-	104.00-126.00	113.46	126.00	299-	110.00-142.00	134.25	142.00

Stocker Sale at: **Ottawa Livestock Exchange, June 18, 2009**- 75 stockers

STEERS	Price Range	Avg	Top	HEIFERS	Price Range	Avg	Top
700-799	91.00-110.00	102.38	110.00	600-699	84.00-109.00	99.09	124.00
600-699	108.00-126.00	118.50	126.00	500-599	97.00-118.00	107.78	118.00
500-599	121.00-126.00	122.80	126.00				
400-499	69.00-135.00	114.40	135.00				
399-	89.00-146.00	121.20	146.00				



QUEBEC ELECTRONIC AUCTION MARKET

For the week ending **June 18, 2009** **Price Range**
A1, A2 Steers & Heifers **154.00-159.50**

ALBERTA DIRECT TRADE

Alberta direct trade this week held basically steady. Live steers averaged \$0.03 higher and live heifers averaged \$0.46 lower. The prices for this week are as follows:

Steers	Live	85.55-87.25	Flat rail	143.50-144.85
Heifers	Live	86.00-86.40	Flat rail	143.50-144.85

U.S. TRADE (U.S funds)

US cash cattle trade was light in the north yesterday with prices steady to last week at \$131.00 dressed. Today there has been no new trade to report. It appears that both buyers and sellers are holding out until after the Cattle on Feed Report is released later in the afternoon. Asking prices are at \$84.00 live and \$132.00-\$134.00 dressed.

Choice and select steers and heifers:	Live	N/T
	Rail	N/T

U.S. BOXED BEEF CUT-OUT VALUES (U.S. funds)

	Choice	Select
Cutout Values: (noon estimate)	139.24	132.37
Change: (from yesterday's close)	-0.69	-0.71
Current 5 day average:	139.84	133.00

CHICAGO MERCANTILE EXCHANGE

Closing quotes on futures today were as follows:

Live Cattle			Feeder Cattle			Corn			Soybeans			Canadian \$		
\$/cwt US			\$/cwt US			\$/bu US ¢/bu			\$/bu US ¢/bu					
Jun	80.92	+0.15	Aug	98.10	+0.30	Jul	3.992	-4.0	Jul	11.790	-34.6	Spot	88.17	-0.30
Aug	82.12	+0.42	Sep	98.25	+0.57	Sep	4.072	-4.4	Aug	11.200	-30.2	Jun	88.19	-0.11
Oct	87.75	+0.57	Oct	98.40	+0.20	Dec	4.194	-4.2	Sep	10.504	-32.0	Sep	88.26	-0.11
Dec	88.87	+0.50	Nov	98.60	+0.35	Mar	4.310	-4.2	Nov	10.060	-37.4	Dec	88.36	-0.12
Feb	90.10	+0.32	Jan	97.70	+0.40	May	4.394	-3.6	Jan	10.130	-37.4	Mar	88.46	-0.14
Apr	91.45	+0.27	Mar	97.25	+1.05	Jul	4.480	-2.2	Mar	10.104	-36.2	Jun	88.56	-0.16

Ontario Cattlemen's Association, 130 Malcolm Rd., Guelph, ON N1K 1B1 Phone: (519) 824-0334 Fax: (519) 824-1930 or email:

mktinfo@cattle.guelph.on.ca