

Daily Market Information Report

The following information is collected from various sources and disseminated by the Ontario Cattlemen's Association.

Friday July 3, 2009

ONTARIO DIRECT TO PACKER RAILGRADE PRICES

Prices are on a carcass weight basis, before grade and weight discounts.

A grade steers 159.00-164.00
A grade heifers 158.00-163.00

ONTARIO LIVE CATTLE TRADE

Today at: **Brussels Livestock** : 806 stockers

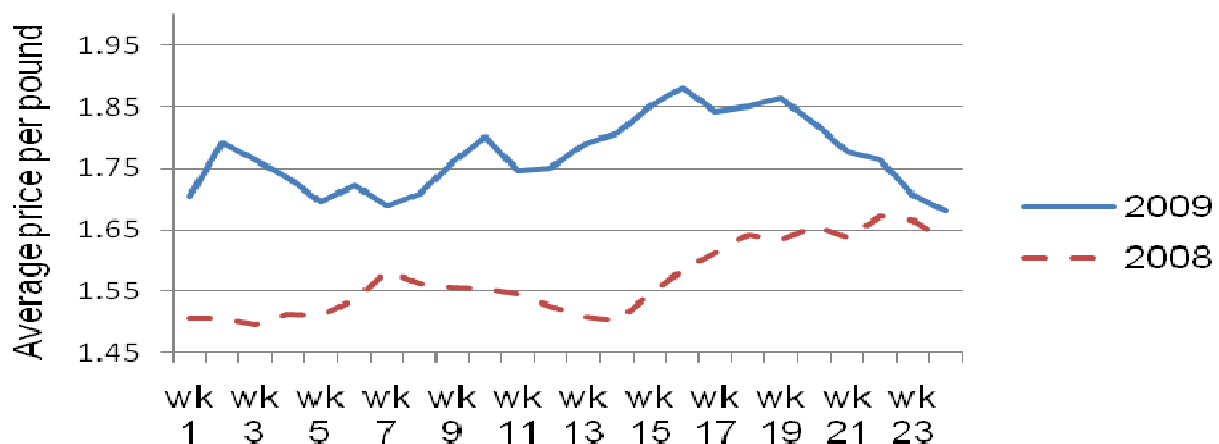
STEERS	Price Range	Avg	Top	HEIFERS	Price Range	Avg	Top
1000+	93.25-96.00	95.03	99.00	900+	90.00-96.50	93.06	96.50
900-999	95.25-104.00	99.93	105.00	800-899	94.25-100.25	97.45	100.25
800-899	101.00-110.00	107.36	110.00	700-799	99.50-110.25	105.25	110.25
700-799	110.25-120.00	113.76	121.50	600-699	105.50-116.00	110.18	120.00
600-699	113.00-123.50	120.41	128.00	500-599	110.00-122.00	117.80	123.00
500-599	120.00-135.00	127.51	139.00	400-499	124.00-150.00	130.88	150.00
400-499	124.00-126.00	124.88	30.00	300-399	140.00-145.00	142.75	145.00
399-	120.00-150.00	135.40	150.00				

Calves sold on a very strong trade with prices \$2.00-\$3.00 higher. Yearlings sold on a steady market.

Ontario Auction Sales on **Thursday** saw weighted prices for:

	Price Range	Avg.	Top
Large & Medium Frame Fed Steers +1250	84.10-98.45	92.17	102.50
Large & Medium Frame Fed Heifers +1000	84.23-96.22	91.67	100.00
Cows	42.03-59.05	51.01	79.00
Bulls	61.17-74.16	66.97	96.00
Veal calves 600 lbs +	71.42-107.47	82.06	143.00
Veal calves 125 lbs & under	48.00-119.00	89.17	128.00

**Canadian AAA Boxed Beef Cutouts
Weekly Average Price**



Stocker Sale at: **Ontario Livestock Exchange, July 2, 2009** – 94 stockers

STEERS	Price Range	Avg	Top	HEIFERS	Price Range	Avg	Top
700-799	82.00-113.50	104.17	113.50	800-899	91.50-98.00	95.00	98.00
600-699	92.00-109.00	99.63	109.00	700-799	85.00-99.00	93.67	99.00
500-599	113.00-123.50	116.92	130.00	400-499	61.00-116.00	90.86	116.00
400-499	112.00-123.00	117.50	123.00				
399-	116.00-141.00	129.00	141.00				

Stocker Sale at: **Ontario Stockyards Inc, July 2, 2009**- 193 stockers

STEERS	Price Range	Avg	Top	HEIFERS	Price Range	Avg	Top
1000+	69.00-86.50	74.14	98.00	900+	74.50-85.00	81.87	85.00
900-999	97.00-97.50	97.16	105.50	800-899	87.00-95.50	92.70	95.50
800-899	106.00-109.00	107.64	109.00	700-799	81.50-89.00	85.24	97.50
700-799	92.50-112.00	103.15	115.00	600-699	76.00-90.50	80.55	105.50
600-699	103.50-115.25	109.60	117.75	500-599	94.00-115.00	107.31	115.00
500-599	79.50-122.00	97.45	124.50	400-499	103.00-122.00	116.32	122.00
400-499	115.00-133.50	124.55	133.50	300-399	108.50-126.00	117.19	126.00
399-	141.00-145.50	143.02	145.50				

QUEBEC ELECTRONIC AUCTION MARKET

For the week ending **July 2, 2009** **Price Range**
A1, A2 Steers & Heifers **158.00-162.00**

ALBERTA DIRECT TRADE

Alberta direct trade on Thursday was active with prices \$1.00-\$1.50 higher.

Steers	Live	86.70-88.25	Flat rail	148.00-149.00
Heifers	Live	87.60-88.25	Flat rail	148.85-149.00

U.S. TRADE (U.S funds)-**Closed in observation of the U.S. Independence Day Holiday**

Choice and select steers and heifers: Live **N/T**
 Rail **N/T**

U.S. BOXED BEEF CUT-OUT VALUES (U.S. funds)

	Choice	Select
Cutout Values: (noon estimate)	N/A	N/A
Change: (from yesterday's close)		
Current 5 day average:		

CHICAGO MERCANTILE EXCHANGE-

Closed in observation of the U.S. Independence Day Holiday

Closing quotes on futures today were as follows:

Live Cattle		Feeder Cattle		Corn		Soybeans		Canadian \$	
\$/cwt US		\$/cwt US		\$/bu US ¢/bu		\$/bu US ¢/bu			
Aug	N/T	Aug	N/T	Jul	N/T	Jul	N/T	Spot	N/T
Oct		Sep		Sep		Aug		Sep	
Dec		Oct		Dec		Sep		Dec	
Feb		Nov		Mar		Nov		Mar	
Apr		Jan		May		Jan		Jun	
Jun		Mar		Jul		Mar		Sep	

Ontario Cattlemen's Association, 130 Malcolm Rd., Guelph, ON N1K 1B1 Phone: (519) 824-0334 Fax: (519) 824-1930 or email:

mktinfo@cattle.guelph.on.ca