

The following information is collected from various sources and disseminated by the Ontario Cattlemen's Association.

Friday, June 21, 2013

ONTARIO DIRECT TO PACKER RAILGRADE PRICES

Prices are on a carcass weight basis, before grade and weight discounts. (Price for today, regardless of delivery day)

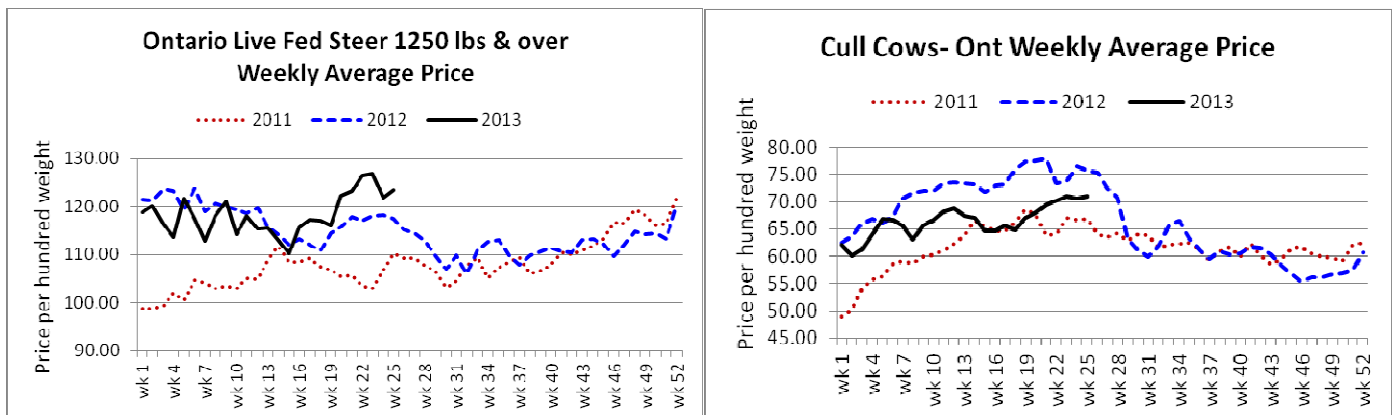
A grade steers 204.00-210.00

A grade heifers 203.00-209.00

Today at: **Brussels Livestock – 900 stockers on offer**

STEERS	Price Range	Avg	Top	HEIFERS	Price Range	Avg	Top
1000+	114.00-128.50	125.36	128.50	900+	117.00-123.00	119.89	125.00
900-999	119.00-133.75	127.62	133.75	800-899	122.25-130.00	124.47	130.00
800-899	119.50-135.50	130.46	139.00	700-799	123.00-130.00	127.05	131.50
700-799	120.50-145.50	133.42	147.00	600-699	122.00-141.00	133.13	141.00
600-699	125.00-157.00	142.26	157.00	500-599	129.00-149.00	141.03	157.00
500-599	134.00-167.00	154.17	167.00	400-499	145.00-154.00	152.20	154.00
400-499	112.00-179.00	157.47	180.00	300-399	150.00-160.00	157.14	160.00
399-	145.00-150.00	146.10	182.00				

All classes of cattle traded on a strong active market at steady prices.

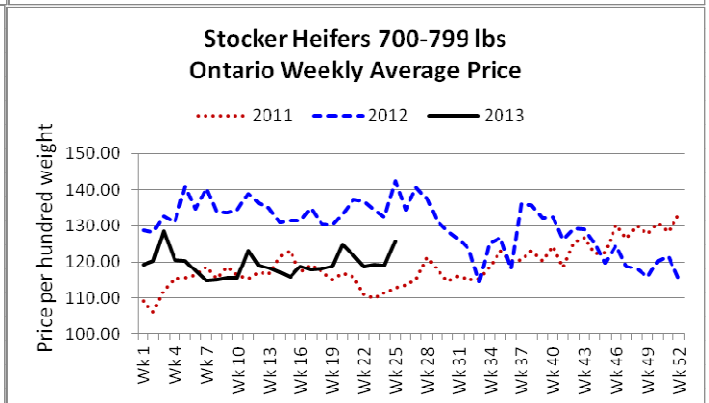
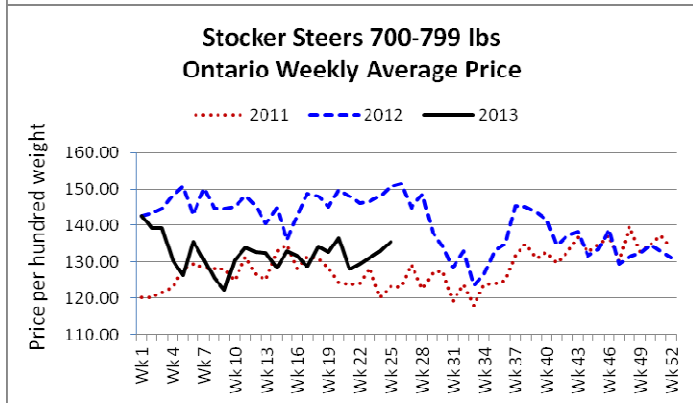
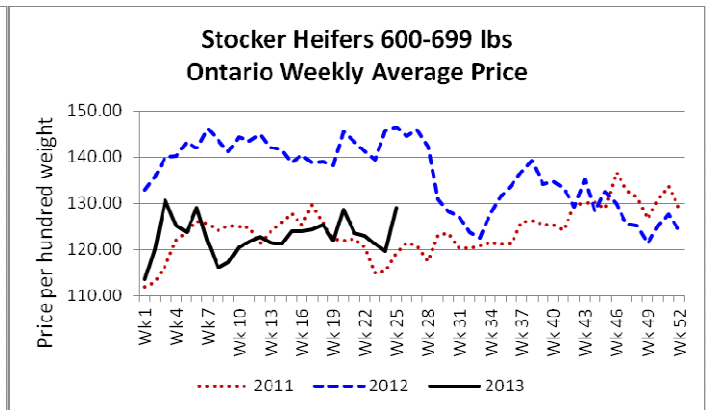
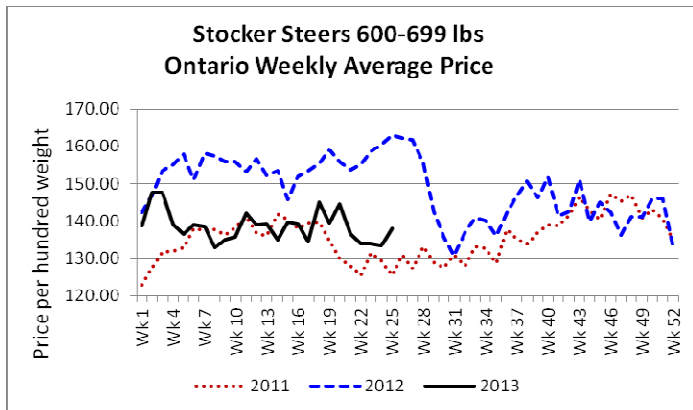


Ontario Auction Sales on **Thursday** saw weighted prices for:

	Volume	Price Range	Avg	Top
Large & Medium Frame Fed Steers +1250	127	116.91-132.13	124.52	143.75
Large & Medium Frame Fed Heifers +1000	74	100.32-129.23	119.83	132.50
Cows	548	64.61-82.46	73.69	107.00
Bulls	34	75.68-98.25	90.32	106.50
Veal calves 600 lbs +	135	83.77-121.56	96.84	171.00
Veal calves 125 lbs & under	96	84.00-160.00	127.06	176.00

Stocker Sale at: **Ontario Livestock Exchange, June 20, 2013 – 87 stockers**

STEERS	Price Range	Avg	Top	HEIFERS	Price Range	Avg	Top
600-699	113.00-141.50	135.80	141.50	700-799	100.00-120.00	109.00	120.00
				600-699	121.00-128.00	125.75	128.00
				500-599	111.00-139.00	129.67	139.00
				400-499	118.00-127.00	124.75	130.00
				299-	130.00-227.50	178.75	227.50



Stocker Sale at: **Ontario Stockyards Inc, June 13, 2013 – 408 stockers**

STEERS	Price Range	Avg	Top	HEIFERS	Price Range	Avg	Top
1000+	98.00-114.00	106.97	125.50	900+	98.00-107.00	102.32	113.00
900-999	111.00-130.50	124.08	130.50	800-899	103.00-125.50	112.99	126.00
800-899	125.00-145.75	139.83	145.75	700-799	115.00-140.00	130.87	140.00
700-799	118.50-149.50	134.08	149.50	600-699	119.00-136.50	127.20	145.00
600-699	120.00-156.50	140.91	156.50	500-599	119.00-152.00	134.95	152.00
500-599	133.00-170.00	147.59	170.00	400-499	124.50-135.50	129.69	135.50
400-499	132.00-179.00	148.52	185.00				
399-	113.00-146.00	135.47	200.00				

Stocker Sale at: **Ottawa Livestock Exchange, June 13, 2013 – 86 stockers**

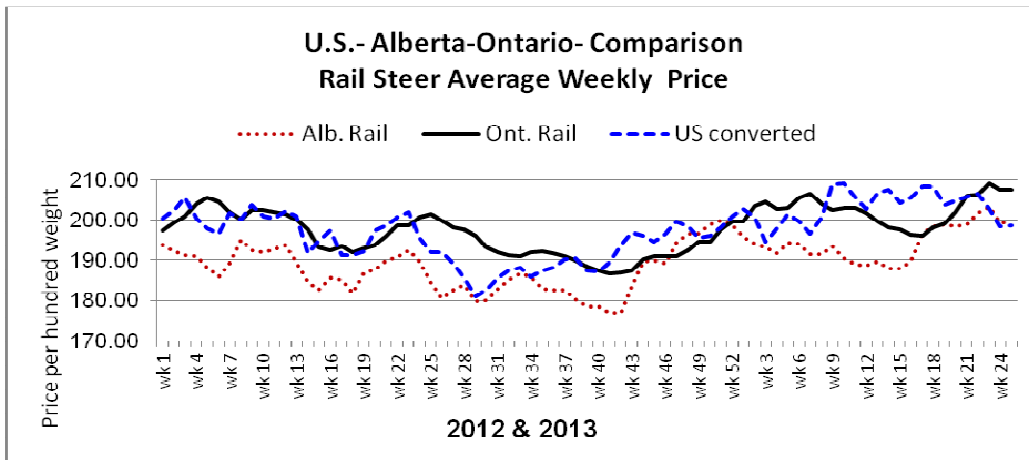
STEERS	Price Range	Avg	Top	HEIFERS	Price Range	Avg	Top
700-799	110.00-133.00	118.00	133.00	600-699	108.00-124.00	116.40	124.00
600-699	124.00-142.00	134.67	142.00	500-599	119.00-128.00	122.63	129.00
500-599	106.00-145.00	133.17	145.00				
400-499	86.00-164.00	136.60	164.00				

U.S. BOXED BEEF CUT-OUT VALUES (U.S. funds)

	Choice 600-900	Select 600-900
Cutout Values: (noon estimate)	199.54	186.41
Change: (from yesterday's close)	+0.24	+0.53
Current 5 day average:	199.88	184.56

QUEBEC ELECTRONIC AUCTION MARKET (F.O.B. the feedlot)

Week Ending	Price	Change from last week
Thursday June 20, 2013		
A1, A2 Steers	\$206.75-\$207.75	+\$0.54



ALBERTA DIRECT TRADE

The Alberta direct trade saw live prices average \$0.38 lower while the rail was generally \$2.00 lower than last week on average. Prices reported for this week by Canfax are as listed below:

Steers	Live	121.00	Flat rail	196.75-199.00
Heifers	Live	N/T	Flat rail	196.75-199.00

U.S. TRADE (U.S. funds)

The U.S. cash cattle trade saw a very light test late on Thursday with prices generally \$1.00 lower than last week's weighted average price with sales from \$194.00-\$195.00 dressed, majority of sales were at \$194.00. Today, the market was fairly quiet as both sides waited until the Cattle on Feed Report was released. At time of reporting a couple of sales have surfaced in Nebraska at \$194.00 dressed and now that the report is posted, active trade is expected to develop. Currently bids are sitting at \$117.00-\$118.00 live and \$192.00-\$194.00 dressed while asking prices are holding firm at \$121.00-\$122.00 live and \$195.00-\$196.00 dressed, supported by sharply higher cattle futures today.

Choice and select steers and heifers:	Live	N/T
	Rail	194.00-195.00 most 194.00

CHICAGO MERCANTILE EXCHANGE

Closing quotes on futures today were as follows:

Live Cattle			Feeder Cattle			Corn		Soybeans		Canadian \$				
\$/cwt US			\$/cwt US			\$/bu US		¢/bu						
Jun	121.25	+1.30	Aug	146.92	+2.50	Jul	6.616	-11.4	Jul	14.932	-4.2	Spot	95.64	-0.59
Aug	121.60	+1.60	Sep	149.15	+2.40	Sep	5.920	-6.2	Aug	14.136	-7.0	Sep	95.42	-0.59
Oct	125.12	+1.27	Oct	150.70	+2.05	Dec	5.562	+4.2	Sept	13.156	-9.6	Dec	95.22	-0.58
Dec	127.10	+1.17	Nov	152.00	+1.85	Mar	5.670	-4.0	Nov	12.734	-11.4	Mar	95.00	-0.59
Feb	128.00	+0.97	Jan	151.90	+1.65	May	5.736	-4.4	Jan	12.764	-12.0	Jun	94.77	-0.59
Apr	129.55	+1.10	Mar	152.75	+1.12	Jul	5.796	-4.6	Mar	12.732	-10.4	Sep	94.54	-0.58

Ontario Cattlemen's Association, 130 Malcolm Rd., Guelph, ON N1K 1B1 Phone: (519) 824-0334 Fax: (519) 824-1930 or email: mktinfo@cattle.guelph.on.ca