



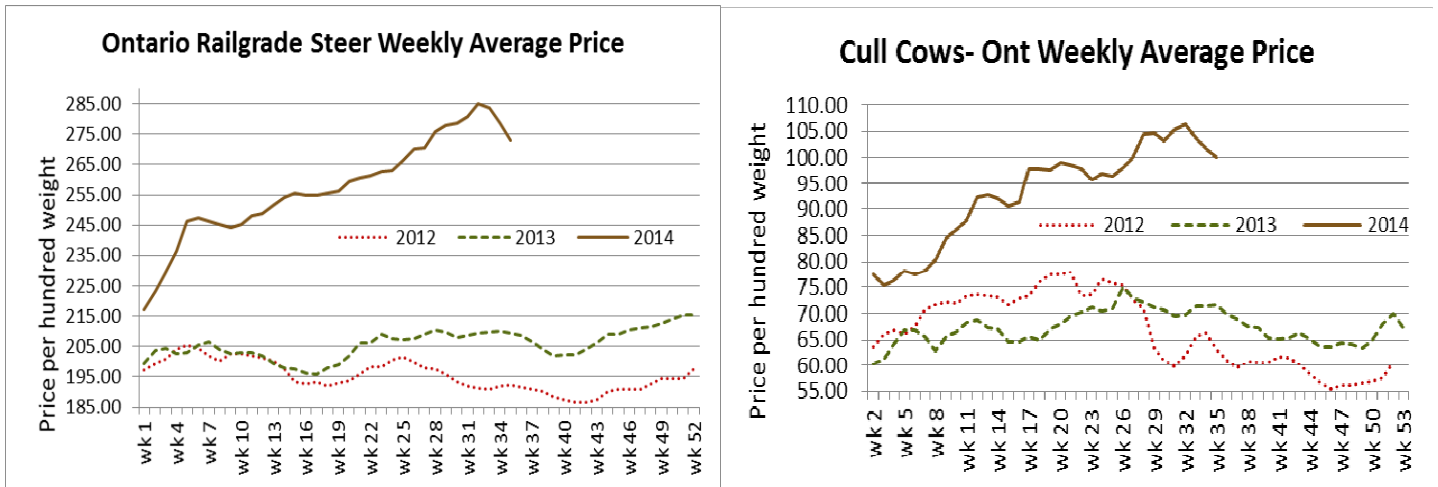
## Daily Market Information Report - Friday, August 29, 2014

The following information is collected from various sources and disseminated by Beef Farmers of Ontario.

### ONTARIO DIRECT TO PACKER RAILGRADE CATTLE TRADE

Prices are on a carcass weight basis before grade and weight discounts. (Prices for today regardless of delivery date).

**A Grade Steers** 270.00-272.00  
**A Grade Heifers** 269.00-271.00



### ONTARIO LIVE CATTLE TRADE

Today at **Brussels Livestock** – 800 stockers on offer

Steers	Price Range	Average	Top	Heifers	Price Range	Average	Top
1000+	188.00-195.00	190.77	198.50	+900 lbs	174.50-190.00	183.45	191.00
900-999	192.50-209.50	200.52	215.00	800-899	187.00-211.50	195.63	211.50
800-899	201.00-234.25	218.41	234.25	700-799	191.00-226.00	214.07	226.00
700-799	212.00-246.00	231.01	241.00	600-699	208.00-238.00	220.34	238.00
600-699	202.00-269.00	236.58	269.00	500-599	219.50-251.00	230.07	251.00
500-599	204.00-270.00	239.71	297.00	400-499	172.00-240.00	219.15	275.00
400-499	260.00-300.00	281.69	300.00	300-399	216.00-270.00	229.28	315.00
399-	270.0-310.00	293.78	312.00				

All classes of cattle sold on a strong active trade at steady prices.

Ontario auction sales on **Thursday** saw weighted prices for:

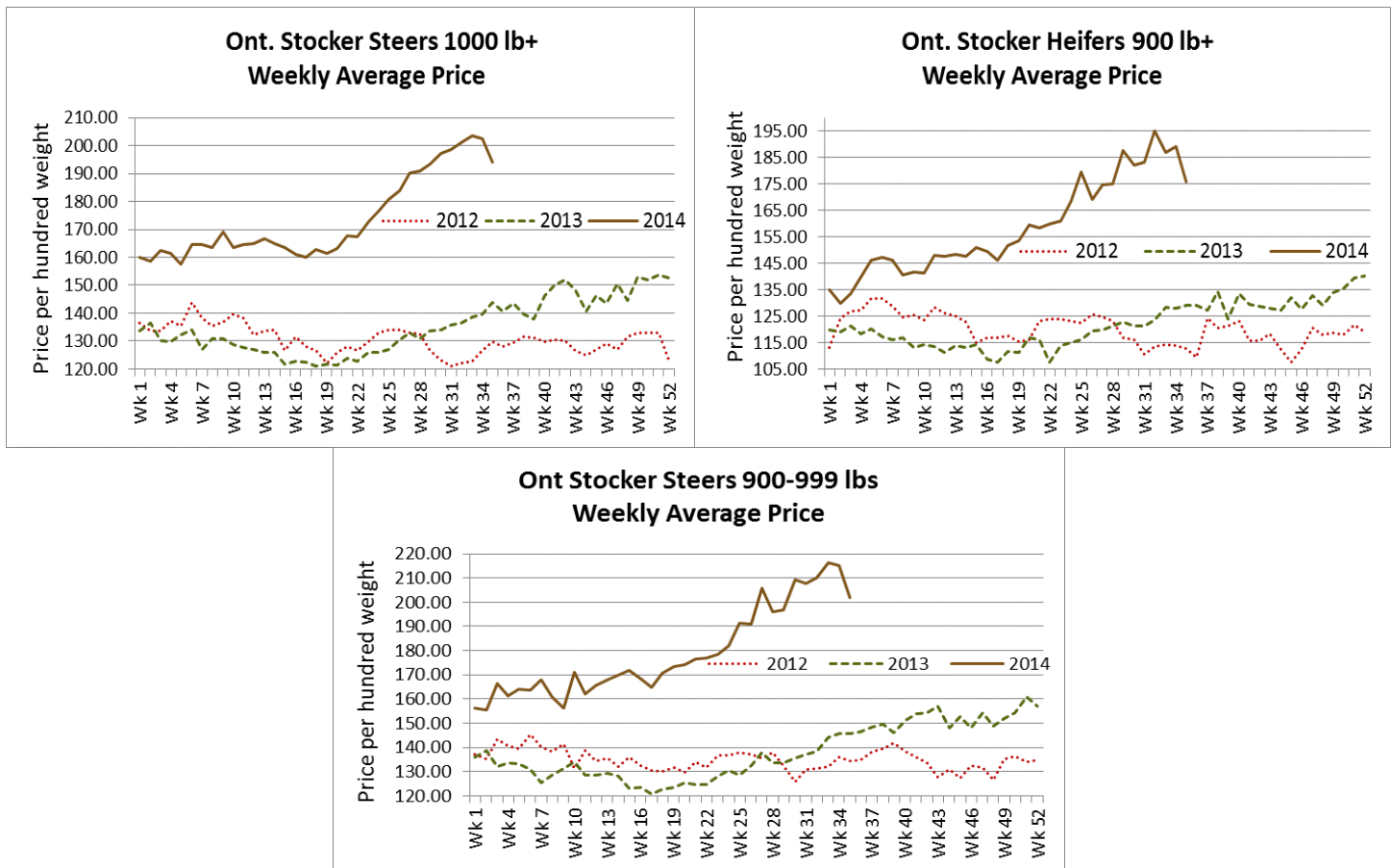
	Volume	Price Range	Average	Top
Large & Medium Frame Fed Steers +1250 lbs	74	127.58-162.60	148.63	170.00
Large & Medium Frame Fed Heifers +1000 lbs	45	151.46-163.46	155.96	172.50
Cows	634	78.67-112.82	98.33	135.00
Bulls	30	95.07-119.13	106.58	154.00
Veal +600 lbs	123	119.41-162.39	134.92	227.00
Veal Calves 125 lbs & under	181	100.00-269.00	194.63	300.00

Stocker sale at: **Ontario Livestock Exchange, August 28, 2014 – 114** stockers

<b>Steers</b>	<b>Price Range</b>	<b>Average</b>	<b>Top</b>	<b>Heifers</b>	<b>Price Range</b>	<b>Average</b>	<b>Top</b>
<b>1000+</b>	174.0-189.00	179.50	189.00	<b>700-799</b>	103.00-188.00	172.89	188.00
<b>600-699</b>	184.00-231.00	205.43	239.00	<b>600-699</b>	167.50-187.00	180.06	187.00
<b>500-599</b>	185.00-250.0	224.83	250.00	<b>500-599</b>	164.00-201.00	183.29	201.00
				<b>400-499</b>	170.00-247.50	223.75	247.50

Stocker sale at: **Ontario Stockyards Inc., August 28, 2014 – 1,097** stockers

<b>Steers</b>	<b>Price Range</b>	<b>Average</b>	<b>Top</b>	<b>Heifers</b>	<b>Price Range</b>	<b>Average</b>	<b>Top</b>
<b>1000+</b>	180.00-202.00	192.61	202.00	<b>900+</b>	119.00-178.25	144.27	199.50
<b>900-999</b>	190.00-215.00	207.92	221.00	<b>800-899</b>	201.50-220.00	212.79	220.00
<b>800-899</b>	211.25-231.75	225.24	234.25	<b>700-799</b>	197.00-236.50	220.68	236.50
<b>700-799</b>	194.00-252.00	231.35	254.00	<b>600-699</b>	178.00-246.50	216.01	246.50
<b>600-699</b>	195.00-282.00	233.11	282.00	<b>500-599</b>	137.50-217.00	184.60	253.00
<b>500-599</b>	139.00-251.00	208.38	306.00	<b>400-499</b>	172.50-245.00	217.34	267.00
<b>400-499</b>	253.00-311.00	293.01	320.00	<b>300-399</b>	170.00-210.00	190.58	267.00
<b>399-</b>	240.00-306.00	271.88	331.00	<b>299-</b>	215.00-230.00	222.67	230.00

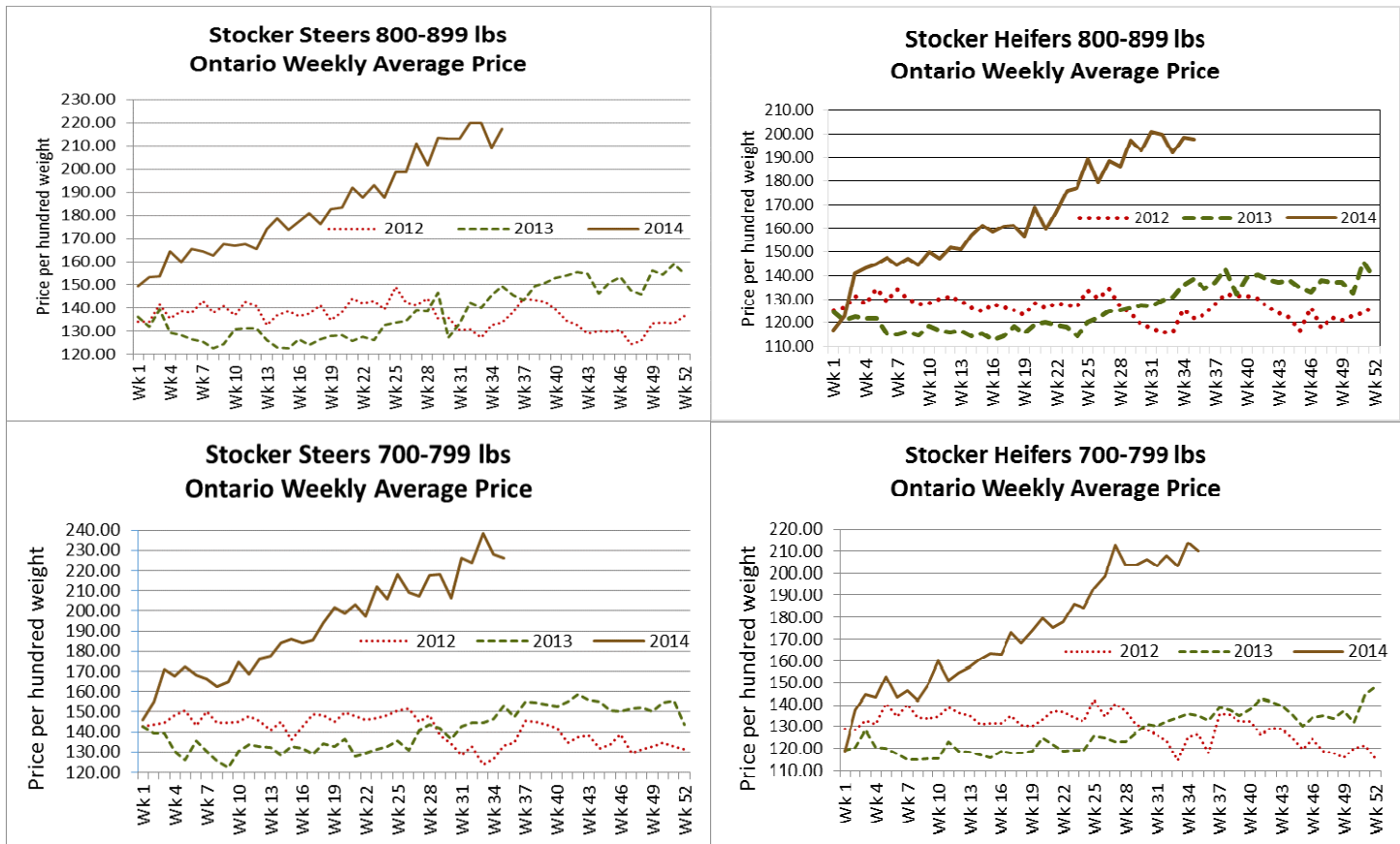


Stocker sale at: **Ottawa Livestock Exchange, August 28, 2014 – 129** stockers

<b>Steers</b>	<b>Price Range</b>	<b>Average</b>	<b>Top</b>	<b>Heifers</b>	<b>Price Range</b>	<b>Average</b>	<b>Top</b>
<b>700-799</b>	164.00-217.00	186.29	217.00	<b>700-799</b>	184.00-232.00	212.75	232.00
<b>600-699</b>	160.00-242.00	208.40	255.00	<b>600-699</b>	168.00-252.00	200.67	252.00
<b>500-599</b>	204.00-284.00	246.94	330.00	<b>500-599</b>	185.00-260.00	224.14	260.00
<b>400-499</b>	237.00-340.00	283.00	340.00	<b>400-499</b>	115.00-274.00	238.71	274.00
<b>399-</b>	190.00-350.00	265.18	350.00	<b>300-399</b>	238.00-290.00	265.75	290.00

Stocker sale at: **Brussels Livestock, August 28, 2014 – 94** stockers

Steers	Price Range	Average	Top	Heifers	Price Range	Average	Top
400-499	270.00-335.00	294.54	335.00	400-499	235.00-275.00	245.15	275.00
399-	225.00-327.00	279.63	327.00	300-399	217.00-300.00	265.40	300.00



**U.S. BOXED BEEF CUT-OUT VALUES (U.S. funds)**

	Choice 600-900	Select 600-900
Cutout Values (noon estimate):	245.99	234.78
Change (from yesterday's close):	-0.90	-0.49
Current Five Day Average:	248.45	238.02

**ALBERTA DIRECT TRADE**

The Alberta direct trade was light to moderate this week with prices averaging \$3.00 higher on a dressed basis. Steers sold from \$158.50-\$160.00 live and \$268.75-\$272.75 flat rail. Heifers sold at \$272.75 flat rail with no live trade reported.

<b>Steers</b>	Live	158.50-160.00	Flat rail	268.75-272.75
<b>Heifers</b>	Live	N/T	Flat rail	272.75

**QUEBEC ELECTRONIC AUCTION MARKET (F.O.B. THE FEEDLOT)**

	Price	Change from Last Week
Week Ending Thursday, August 28, 2014	267.75-271.00	-3.17

**U.S. TRADE (U.S. funds)**

The U.S. cash cattle trade finally got going this morning with volumes light to moderate and prices around \$3.00 higher than last week. Southern sales were at \$155.00 live and northern trade at \$245.00 dressed. The market is reported as quiet now.

<b>Choice and Select Steers and Heifers:</b>	Live	N/T
	Rail	N/T

## CHICAGO MERCANTILE EXCHANGE

Closing quotes on futures today were as follows:

Live Cattle			Feeder Cattle			Corn			Soybeans			Canadian \$		
\$/cwt US			\$/cwt US			\$/bu US		¢/bu	\$/bu US		¢/bu			
<b>Aug</b>	155.90	+1.25	<b>Sep</b>	218.65	+1.50	<b>Sep</b>	3.590	-2.6	<b>Sep</b>	10.894	+15.4	<b>Spot</b>	91.99	-0.16
<b>Oct</b>	151.42	+1.32	<b>Oct</b>	216.72	+1.95	<b>Dec</b>	3.646	-4.4	<b>Nov</b>	10.242	-4.4	<b>Sep</b>	91.95	-0.16
<b>Dec</b>	153.95	+1.25	<b>Nov</b>	215.37	+2.45	<b>Mar</b>	3.776	-4.4	<b>Jan</b>	10.324	-4.0	<b>Dec</b>	91.75	-0.16
<b>Feb</b>	154.60	+0.82	<b>Jan</b>	210.20	+2.30	<b>May</b>	3.860	-4.4	<b>Mar</b>	10.404	-3.2	<b>Mar</b>	91.55	-0.16
<b>Apr</b>	154.37	+0.77	<b>Mar</b>	210.02	+2.15	<b>Jul</b>	3.926	-4.2	<b>May</b>	10.462	-4.0	<b>Jun</b>	91.36	-0.16
<b>Jun</b>	146.05	+0.85	<b>Apr</b>	210.10	+1.97	<b>Sep</b>	3.992	-4.0	<b>Jul</b>	10.502	-4.4	<b>Sep</b>	91.20	-0.17

Beef Farmers of Ontario, 130 Malcolm Road, Guelph, ON N1K 1B1 Phone: (519) 824-0334 Fax: (519) 824-1930 or email: [markets@ontariobeef.com](mailto:markets@ontariobeef.com)

### UPCOMING SPECIAL FALL STOCKER/BRED COW SALES!

<i>Aug 30 - 1:00 pm</i>	<i>Maple Hill Auctions Ltd</i>	<i>Ontario Autumn Angus Classic</i>
<i>Sep 5 - 7:00 pm</i>	<i>Cargill Auction Market</i>	<i>Char &amp; Exotic Cross, yearling sale</i>
<i>Sep 6 - 9:30 am</i>	<i>Rainy River Cattlemen's Sale</i>	<i>First fall Stocker sale including calf club sale, cows, etc.</i>
<i>Sep 11- 10:00 am</i>	<i>Warton- Grey Bruce Livestock Co-op</i>	<i>Stocker sale</i>
<i>Sep 13- 1:00 pm</i>	<i>Maple Hill Auctions</i>	<i>Ontario Autumn Simmental Classic</i>
<i>Sep 16- 10:00 am</i>	<i>Thessalon-Algoma Co-op Livestock Sales</i>	<i>Yearling sale- 85% vaccinated</i>
<i>Sep 16-11:00 am</i>	<i>Ontario Stockyards Inc</i>	<i>Special Fall Yearling Sale</i>