



Daily Market Information Report – Tuesday, May 3, 2016

The following information is collected from various sources and disseminated by Beef Farmers of Ontario.

ONTARIO DIRECT TO PACKER RAILGRADE CATTLE TRADE

Prices are on a carcass weight basis before grade and weight discounts, regardless of delivery date.

Prices reported for Monday May 2, 2016

A Grade Steers	248.00-255.00
A Grade Heifers	247.00-254.00

ONTARIO LIVE CATTLE TRADE

Today at **Brussels Livestock**: **220** Fed Cattle and **275** Cows

	Price Range	Top
Fancy Steers & Heifers	162.00-165.00	175.50
Choice Steers & Heifers	152.00-156.00	
Second Cut Cattle	148.00-152.00	
Good Beef Cows	98.00-108.00	114.00
Export Cows	88.00-91.00	92.00
D1 & D2 Cows	88.00-92.00	
D3 Cows	82.00-87.00	

Fed cattle sold on an active trade at prices steady to last week. Cows sold on a selective demand at steady prices.

Today at **Ontario Livestock Exchange**: **342** Veal and **136** Cows

	Price Range	Top
Good quality Cows	80.00-87.00	125.00
Good Beef Calves	195.00-249.00	
Good Holstein Veal	116.00-130.00	
Medium Holstein Veal	100.00-115.00	
Heavy Holstein Veal	105.00-125.00	
Plain Holstein Veal	85.00-96.00	

Veal sold at lower prices. Cows sold on a barely steady market.

Today at **Ontario Stockyards Inc.:** **1,150** stockers

Steers	Price Range	Average	Top	Heifers	Price Range	Average	Top
900-999	154.00-178.50	168.39	178.50	900+	128.00-147.00	135.84	164.00
800-899	161.00-182.00	173.11	182.00	800-899	152.00-172.50	165.02	172.50
700-799	184.00-202.00	194.65	208.00	700-799	163.00-180.50	173.33	182.00
600-699	183.00-219.00	204.94	219.00	600-699	157.50-193.00	176.55	219.00
500-599	184.00-218.50	206.01	218.50	500-599	160.00-208.00	172.55	219.00
400-499	200.00-225.00	212.46	225.00	400-499	176.00-200.00	187.65	200.00
399-	239.00			300-399	171.00	171.00	189.00

Replacement cattle traded actively at fully steady prices. The sale is in progress at time of reporting, final results will be posted on Wednesday's report.

Today at **Keady Livestock Market**: **1,160** stockers, **32** cows and bulls, **88** replacement (drop) calves

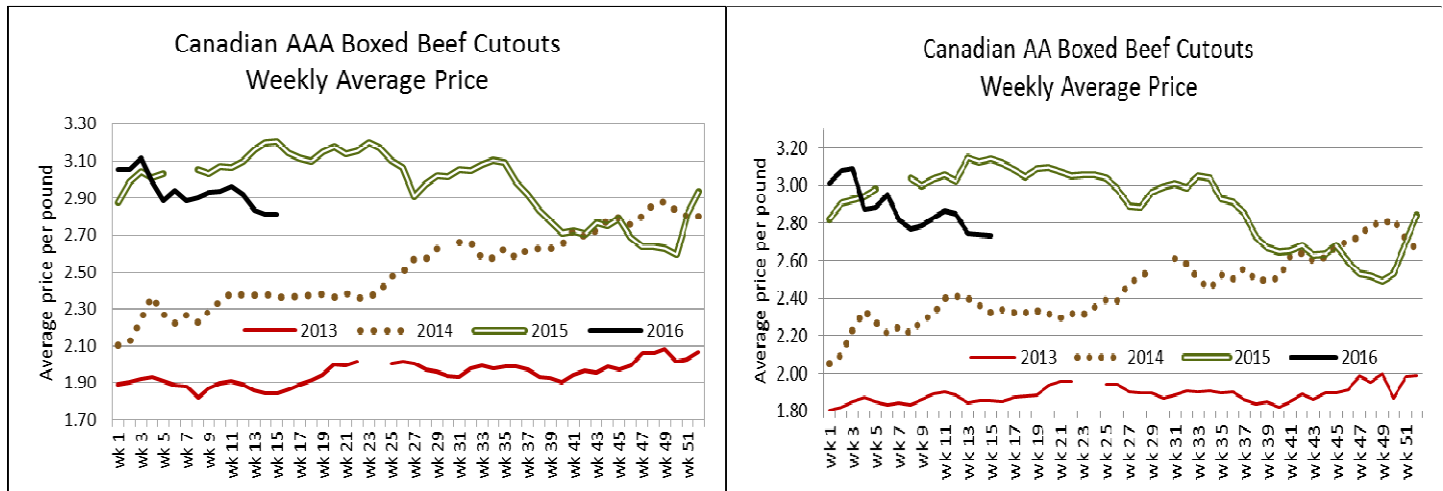
Cows	51.00-92.00
-------------	-------------

Light weight grass types sold steady with heavier cattle trading on a lower market. Cull cows sold steady. Replacement calves sold steady from \$275.00-\$470.00 per head. *May 10th - After regular sale - Herd Dispersal- 24 Char cows, 2 with Jan calves, balance due May, June, July. 1 Silver Dollar breeder bull.*

Ontario auction sales on **Monday** saw weighted prices for:

	Volume	Price Range	Average	Top
Cows	311	70.35-89.38	79.13	100.00
Bulls under 1600 lbs	10	93.50-130.50	113.61	148.00
Bulls over 1600 lbs	4	110.50-131.00	120.71	131.00
Veal calves over 600 lbs	66	105.39-129.78	118.10	195.50
Veal calves under 125 lbs	446	170.19-285.99	228.27	517.00

To check out individual auction market results on the Ontario Beef website go to <http://www.ontariobeef.com/markets/market-reports.aspx>



CANADIAN BOXED BEEF CUT-OUT VALUES

Week Ending	AAA	AA
April 22, 2016	2.8151	2.7323
April 15, 2016	2.8420	2.7875
April 8, 2016	2.8132	2.7353

U.S. BOXED BEEF CUT-OUT VALUES (U.S. funds)

	Choice 600-900	Select 600-900
Cutout Values (noon estimate):	208.23	201.00
Change (from yesterday's close):	-1.54	+1.04
Current Five Day Average:	213.42	204.26

U.S. TRADE (U.S. funds)

The U.S. cash cattle trade remains untested with no bids on the table and asking prices still undefined. Active trading is not expected to develop before the second half of the week.

Choice and Select Steers and Heifers:	Live	N/T
	Rail	N/T

CHICAGO MERCANTILE EXCHANGE

Closing quotes on futures today were as follows:

Live Cattle		Feeder Cattle		Corn		Soybeans		Canadian \$	
\$/cwt US		\$/cwt US		\$/bu US		¢/bu			
Apr	116.37 +0.57	Apr	143.40 +1.97	May	3.782 -12.0	May	10.214 -14.0	Spot	78.59 -1.11
Jun	114.35 +0.62	May	143.05 +1.55	Jul	3.796 -12.0	Jul	10.300 -13.6	Jun	78.59 -1.10
Aug	114.32 +1.75	Aug	142.50 +1.07	Sep	3.814 -10.6	Aug	10.320 -12.0	Sep	78.59 -1.10
Oct	114.30 +0.60	Sep	141.60 +0.67	Dec	3.870 -9.4	Sep	10.190 -10.0	Dec	78.60 -1.10
Dec	113.42 +0.57	Oct	137.67 +0.62	Mar	3.954 -9.0	Nov	10.102 -7.4	Mar	78.61 -1.09
Feb	112.75 +0.30	Nov	134.00 +0.57	May	4.002 -9.0	Jan	10.110 -8.2	Jun	78.63 -1.09

Beef Farmers of Ontario, 130 Malcolm Road, Guelph, ON N1K 1B1 Phone: (519) 824-0334 Fax: (519) 824-1930 or email: markets@ontariobeef.com