



Weekly Market Information Report



Week Ending Thursday June 18, 2009

The following information is collected from various sources and disseminated by the Ontario Cattlemen's Association.

ONTARIO DIRECT TO PACKER RAILGRADE CATTLE TRADE

This is a summary for the week of rail grade prices on a carcass weight basis, before grade and weight discounts.

A grade steers 157.00-164.00
A grade heifers 156.00-163.00

ONTARIO LIVE CATTLE TRADE

Ontario auction sales this week saw weighted average price ranges for
FED CATTLE

	Price Range	Average	Top	Last week Avg
Large Frame Steers +1250	88.06-99.05	93.46	103.50	94.66
Medium Frame Steers +1250	76.25-95.64	88.97	102.50	92.26
Large & Medium Frame Steers + 1250	87.67-100.35	93.53	103.50	94.39
Large Frame Heifers + 1000	82.10-97.58	91.83	99.75	93.07
Medium Frame Heifers + 1000	80.72-94.68	89.99	97.50	91.04
Large & Medium Frame heifers + 1000	81.25-96.83	91.48	99.75	92.75
Cows- All Weights	38.59-55.80	47.28	74.00	45.01
Bulls- All Weights	58.71-71.25	63.42	85.50	59.77

STOCKERS-Large and Medium Frame

STEERS	Volume	Price Range	Average	Top	Last week Avg
1000+	802	93.28-97.25	95.26	100.00	92.47
900-999	496	97.46-101.48	99.71	105.00	98.45
800-899	216	97.16-108.20	105.10	117.00	100.92
700-799	282	102.28-114.40	110.93	119.00	102.99
600-699	182	100.02-119.18	111.86	126.00	105.79
500-599	180	108.83-128.18	118.98	134.00	116.03
400-499	133	112.21-130.53	121.12	146.00	109.88
-399	54	90.69-128.11	109.30	151.00	109.12

HEIFERS	Volume	Price Range	Average	Top	Last week Avg
+900	150	83.02-90.36	87.02	96.00	88.30
800-899	109	84.34-94.46	90.91	103.00	88.63
700-799	178	90.17-104.33	98.58	111.00	96.65
600-699	270	95.54-111.82	104.96	127.00	104.93
500-599	166	100.05-113.71	107.30	121.00	108.35
400-499	128	104.45-117.35	111.37	146.00	106.95
300-399	35	85.83-108.07	101.03	133.00	97.76
299-	11	93.55-124.45	112.75	144.00	119.39

At Talbotville Livestock: Saturday June 13, 2009

	Price Range	Top
Good & Choice Steers	88.00-98.50	103.00
Good & Choice Heifers	85.00-98.75	No tops
Good Cows	46.00-55.00	
Export Cows	42.00-52.00	
Good Veal calves	78.00-92.50	

At Kawartha Lakes Co-op Auction Market: June 13, 2009- 95 cows, 7 bulls, 54 stockers

	Price Range	Average	Top
Cows	27.00-59.50	43.27	64.00
Bulls- all weights	56.93-75.14	66.79	78.00
Stocker steers 600-699	84.00-110.00	103.09	110.00
Stocker heifers 500-599	102.50-111.00	107.81	111.00

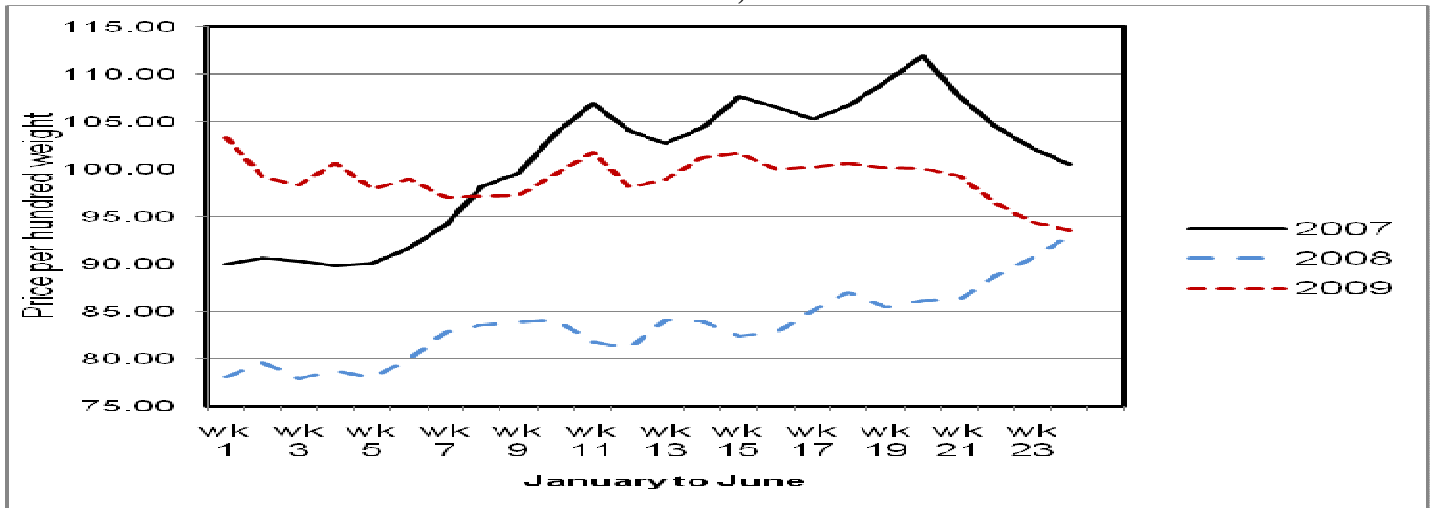
At Denfield Livestock – June 16, 2009

	Price Range		Price Range
Good steers	92.00-95.00	Good heifers	92.00-96.00
Plain Steers	85.00-90.00	Plain heifers	80.00-90.00
Good fed cows	60.00-70.00	Good beef bulls	60.00-70.00
D1 & D2 cows	45.00-50.00	Good Holstein bulls	60.00-65.00
D3 & D4 cows	30.00-40.00	Good Holstein bull calves	\$100.00-\$170.00
Shells	20.00-30.00	Plain Holstein bull calves	\$20.00-\$100.00

At Renfrew Pontiac Livestock Ltd– June 16, 2009

	Price Range		Price Range
Replacement calves	80.00-125.00 top 155.00	Cows D1 & D2	51.00-56.50 top 70.00
Bulls	49.00-66.00	Cows D3	42.00-49.00
Bred cows-good x bred	N/T	Cows D4	32.00-40.00

ONT. FED STEER 1250 LBS & OVER, WEEKLY AVERAGE PRICES.



ONTARIO STOCKER & FEEDER TRADE

Stocker sale at: **Brussels Livestock, June 12, 2009: 837 stockers**

STEERS	Price Range	Avg	Top	HEIFERS	Price Range	Avg	Top
1000+	95.50-97.50	96.29	97.50	900+	87.00-93.25	90.20	96.00
900-999	93.50-99.25	96.84	99.25	800-899	91.00-96.50	94.47	103.00
800-899	94.50-103.25	100.98	104.00	700-799	98.50-106.00	102.49	109.00
700-799	100.00-109.00	103.92	110.00	600-699	98.00-111.50	106.75	112.50
600-699	97.00-120.00	108.64	120.00	500-599	104.00-117.00	109.98	118.00
500-599	115.00-133.00	124.19	134.00	400-499	106.00-121.00	115.05	121.00
400-499	116.00-140.00	129.15	144.00	300-399	96.00-115.00	108.30	115.00
399-	125.00-151.00	144.00	151.00				

Stocker sale: **Community Livestock Exchange-Hoards Station- June 16, 2009** – 98 stockers

STEERS	Price Range	Avg	Top	HEIFERS	Price Range	Avg	Top
500-599	100.00-127.50	116.50	127.50	800-899	65.50-96.50	84.83	96.50
400-499	120.00-128.50	124.00	128.50	700-799	60.00-95.00	90.12	95.00
				600-699	65.00-108.00	90.93	108.00
				500-599	79.50-112.50	104.40	112.50
				400-499	92.50-120.50	106.06	120.50

Stocker sale: **Keady Livestock Market – June 16, 2009-** 472 stockers

STEERS	Price Range	Avg	Top	HEIFERS	Price Range	Avg	Top
1000+	85.50-100.00	96.38	100.00	900+	89.00-95.50	93.33	95.50
900-999	104.25-105.00	104.80	105.00	800-899	95.50	95.50	95.50
800-899	105.75-107.00	106.07	109.50	700-799	99.50-111.00	104.49	111.00
700-799	103.50-114.00	109.57	114.00	600-699	103.00-115.25	109.51	127.00
600-699	115.00-123.00	119.08	123.00	500-599	115.00-121.00	116.76	121.00
500-599	116.00-129.00	121.77	129.00	400-499	115.00-122.00	118.22	122.00
400-499	118.00-129.00	121.67	129.00				

Stocker sale: **Renfrew Pontiac Livestock Ltd- June 16, 2009-** 65 stockers.

STEERS	Price Range	HEIFERS	Price Range
800-899	93.00-99.50	700-799	92.00-99.00
700-799	107.50-108.00	600-699	98.00-106.00
600-699	108.00-116.00	500-599	103.00-114.00
500-599	114.00-129.00	400-499	109.00-117.00
400-499	113.00-137.00	300-399	112.00-119.00
399-	118.00-132.00		

Stocker sale: **Ontario Livestock Exchange – June 17, 2009-** 876 stockers

STEERS	Price Range	Avg	Top	HEIFERS	Price Range	Avg	Top
+1000	94.25-97.75	95.95	99.00	900+	91.00-93.00	91.88	93.00
900-999	96.50-100.75	98.94	104.50				
800-899	87.00-100.50	94.64	100.50				
700-799	96.00-102.00	101.00	102.00				

Stocker Sale at: **Ontario Livestock Exchange, June 18, 2009** – 135 stockers

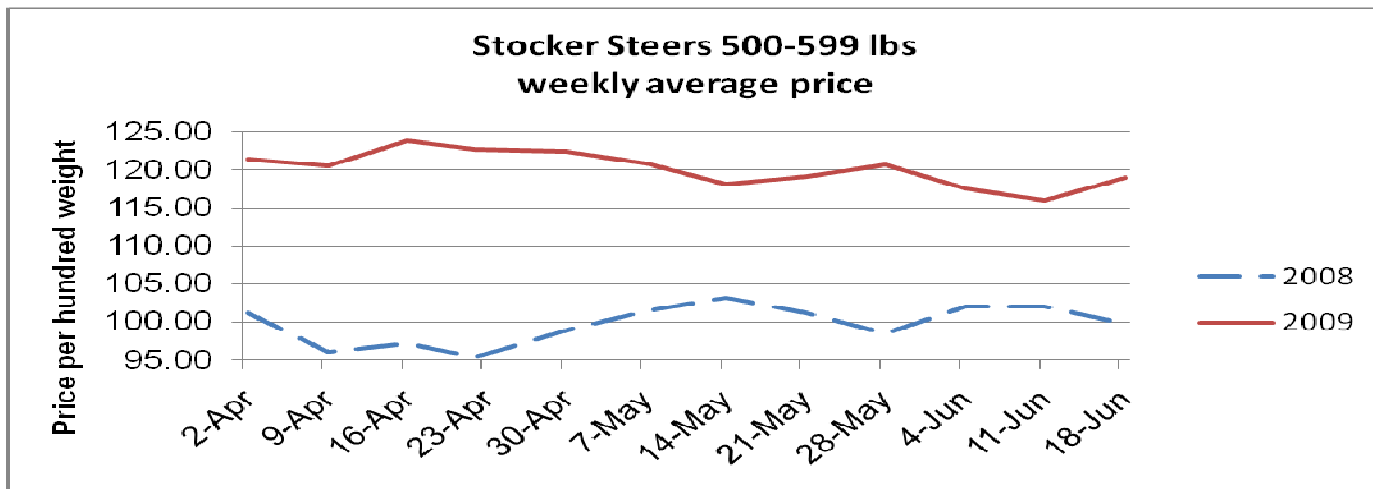
STEERS	Price Range	Avg	Top	HEIFERS	Price Range	Avg	Top
800-899	91.00-98.50	94.00	98.50	700-799	73.00-105.00	92.45	105.00
600-699	79.00-120.00	98.93	120.00	500-599	100.00-110.00	104.00	110.00
500-599	117.00-128.00	120.20	132.50				
400-499	102.00-133.00	113.15	133.00				

Stocker Sale at: **Ontario Stockyards Inc, June 18, 2009-** 715 stockers

STEERS	Price Range	Avg	Top	HEIFERS	Price Range	Avg	Top
1000+	64.00-91.50	76.76	94.50	HEIFERS			
900-999	91.00-100.00	95.59	100.00	900+	74.50-92.50	84.31	92.50
800-899	95.50-117.00	112.56	117.00	800-899	84.50-89.00	88.37	89.00
700-799	106.50-119.00	117.03	119.00	700-799	84.00-104.50	96.70	104.50
600-699	103.00-121.75	115.06	121.75	600-699	102.00-115.25	109.10	115.25
500-599	105.00-128.00	116.93	130.00	500-599	104.00-114.75	109.03	114.75
400-499	118.50-128.00	122.63	135.00	400-499	106.00-117.00	112.05	117.00
399-	104.00-126.00	113.46	126.00	300-399	102.00-115.50	111.01	115.50
				299-	110.00-142.00	134.25	142.00

Stocker Sale at: **Ottawa Livestock Exchange, June 18, 2009**- 75 stockers

STEERS	Price Range	Avg	Top	HEIFERS	Price Range	Avg	Top
700-799	91.00-110.00	102.38	110.00	600-699	84.00-109.00	99.09	124.00
600-699	108.00-126.00	118.50	126.00	500-599	97.00-118.00	107.78	118.00
500-599	121.00-126.00	122.80	126.00				
400-499	69.00-135.00	114.40	135.00				
399-	89.00-146.00	121.20	146.00				



ALBERTA DIRECT TRADE

Week Ending **Thursday June 18, 2009**

Steers	Live	85.55-87.25	Flat rail	143.50-144.85
Heifers	Live	86.00-86.40	Flat rail	143.50-144.85

U.S. TRADE (U.S. funds)

Week Ending **Thursday June 18, 2009**

Weekly range for choice and select steers and heifers	Live	N/T
	Rail	131.00

QUEBEC ELECTRONIC AUCTION MARKET (F.O.B. the feedlot)

Week Ending **Thursday June 18, 2009**

	Price
A1, A2 Steers & Heifers	154.00-159.50

CANADIAN BOXED BEEF CUT-OUT VALUES

Week Ending	AAA	AA
June 5, 2009	1.7634	1.6570
May 29, 2009	1.7780	1.6623
May 22, 2009	1.8232	1.7295

U.S. BOXED BEEF CUT-OUT VALUES (U.S. funds)

	Choice	Select
600-900	600-900	600-900
Current 5 day average:	139.84	133.00

USDA ESTIMATED CATTLE KILL

	Week Ending	Previous Week	Year Ago
	June 20 2009		
Grand Total	672,000	662,000	694,000

AVERAGE CARCASS WEIGHTS – CANADA

	Steers	Heifers
June 13, 2009	819	753
June 7, 2008	823	756

PROVINCIAL SLAUGHTER

	May 2009	May 2008
Steers	3,814	5,698
Heifers	2,777	3,196
Cows	1,040	1,547
Bulls	1,601	825

FEDERALLY INSPECTED CANADIAN KILL

	Week Ending June 13, 2009	YTD	% of Yr. Ago
Grand Total	66,291	1,379,819	98%
Alberta Slaughter	51,832	1,002,760	103%
Ontario Slaughter	11,114	250,803	95%

LIVE CATTLE EXPORTS-ONTARIO

	Week ending May 30, 09	Week ending May 23, 09	Year to Date
Total live slaughter cattle exported from Ont to the US.	1,826	1,812	56,758
Steers & Heifers	1,462	1,558	45,165
Cows	338	247	11,146
Bulls	26	7	447

LIVE CATTLE-CANADA

<u>IMPORTS</u>		<u>EXPORTS</u>	
	Jan 1 – April 30, 09		Jan 1 – June 6, 09
Pure bred	521	Slaughter steers & heifers	248,915
Non-pure bred	15,414	Feeder steers & heifers	178,437
		Cows & Bulls	85,529

BEEF EXPORTS

	United States Jan 1– June 13, 09	Mexico Jan 1-April 30
Total	118,154 tonnes	11,452 tonnes

BEEF PRODUCTION

	Jan 1 – June 13, 09	Last Year Same Time	% Change
Fed	407,045 tonnes	397,830 tonnes	+2.1%
Non-fed	82,990 tonnes	106,415 tonnes	-22.0%

BEEF IMPORTS

	Jan 1 – June 6, 09	Last Year Same Time	% Change
United States	47,516 tonnes	48,279 tonnes	-1.6%
Non-NAFTA	30,670 tonnes	16,143 tonnes	+90.0%
Total	78,624 tonnes	65,164 tonnes	+20.7%

CHICAGO MERCANTILE EXCHANGE

Closing quotes on futures today were as follows:

Live Cattle			Feeder Cattle			Corn		Soybeans		Canadian \$				
\$/cwt US			\$/cwt US			\$/bu US ¢/bu		\$/bu US ¢/bu						
Jun	80.92	+0.15	Aug	98.10	+0.30	Jul	3.992	-4.0	Jul	11.790	-34.6	Spot	88.17	-0.30
Aug	82.12	+0.42	Sep	98.25	+0.57	Sep	4.072	-4.4	Aug	11.200	-30.2	Jun	88.19	-0.11
Oct	87.75	+0.57	Oct	98.40	+0.20	Dec	4.194	-4.2	Sep	10.504	-32.0	Sep	88.26	-0.11
Dec	88.87	+0.50	Nov	98.60	+0.35	Mar	4.310	-4.2	Nov	10.060	-37.4	Dec	88.36	-0.12
Feb	90.10	+0.32	Jan	97.70	+0.40	May	4.394	-3.6	Jan	10.130	-37.4	Mar	88.46	-0.14
Apr	91.45	+0.27	Mar	97.25	+1.05	Jul	4.480	-2.2	Mar	10.104	-36.2	Jun	88.56	-0.16

Ontario Cattlemen's Association, 130 Malcolm Rd., Guelph, ON N1K 1B1 Phone: (519) 824-0334 Fax: (519) 824-1930 or email: mktinfo@cattle.guelph.on.ca or visit our web site at www.cattle.guelph.on.ca

Comments for the week ending June 18, 2009

The fed cattle market struggled again this week. There were 869 fed cattle sold through auction markets down 154 from last week and 710 less than last year at this time. Steers traded from \$87.67-\$100.35 averaging \$93.53, \$0.86 lower than last week and \$0.59 higher than last year at this time. Heifers ranged from \$81.25-\$96.83 with an average price of \$91.48 down \$1.27 from last week and \$0.12 lower than year ago prices. Auction markets reported a dull demand with prices from steady to barely steady to \$2.00 easier.

The slaughter cow market saw a stronger week of trade. There were 1,662 slaughter cows sold through auction markets down 122 from last week and 1,158 less than last year at this time. Cows sold from \$38.59-\$55.80 with an average price of \$47.28 up \$2.27 from last week and \$2.42 lower than year ago prices. Auction markets reported a good active trade with the week starting off at steady prices up to \$2.00 higher by the end of the week.

The replacement cattle market saw a good strong week of trade. There were 3,392 replacement cattle sold through auction markets down 15.8% from last week and 27% less than the same time last year. Auction markets reported a good demand with active trading. Grass type cattle were reported as steady to \$5.00 higher while yearlings were reported as steady to \$2.00 higher. Actual average prices for steers were \$1.50-\$11.24 higher than last week while heifers averaged steady to \$3.27 stronger than last week with the exception of heifers 500-600 lbs which averaged \$1.05 lower.

Ontario railgrade prices continued to trend lower again this week. Steers were reported from \$157.00-\$164.00 while heifers traded from \$156.00-\$163.00, averaging \$2.50 lower than last week.

Alberta's fed cattle market was basically steady this week. Steers traded from \$85.55-\$87.25 live and \$143.50-\$144.85 flat rail. Heifers sold from \$86.00-\$6.40 live and \$143.50-\$144.85 flat rail. Live steers averaged \$0.03 higher while live heifers averaged \$0.46 lower than last week.

U.S. cash cattle trade was quiet all week with the exception of a light trade in the north on Thursday afternoon with prices holding steady at \$131.00 dressed. At time of reporting, there was no new trade to report. Asking prices are sitting at \$84.00 live and \$132.00-\$134.00 dressed. It appears that both sellers and buyers are holding out until after the Cattle on Feed Report is released later in the afternoon.