



Weekly Market Information Report for the week ending **Thursday, November 27, 2014**

The following information is collected from various sources and disseminated by Beef Farmers of Ontario.

ONTARIO DIRECT TO PACKER RAILGRADE CATTLE TRADE

Prices are on a carcass weight basis before grade and weight discounts. Weekly Range:

A Grade Steers	288.00-296.00
A Grade Heifers	287.00-295.00

ONTARIO LIVE CATTLE TRADE

Ontario auction sales this week saw weighted average price ranges for:

FED CATTLE	Volume	Price Range	Average	Top	Last week Avg
Large Frame Steers +1250	256	165.90-187.43	178.19	192.00	166.23
Medium Frame Steers +1250	138	168.35-180.86	176.34	193.00	175.01
Large & Medium Frame Steers +1250	396	169.71-187.23	178.05	193.00	174.74
Large Frame Heifers +1000	131	163.35-179.55	171.37	184.00	172.31
Medium Frame Heifers +1000	199	150.87-172.65	166.14	184.00	161.10
Large & Medium Frame Heifers +1000	330	154.96-175.29	168.29	184.00	165.46
Cows- All Weights	3,556	82.24-119.61	101.46	172.00	102.47
Bulls- All Weights	206	111.83-139.56	125.72	169.00	123.85

STOCKERS-Large and Medium Frame

STEERS	Volume	Price Range	Average	Top	Last week Avg
1000+	509	217.25-250.45	235.15	257.00	235.59
900-999	279	223.50-251.54	240.49	267.00	243.06
800-899	204	194.14-244.02	222.12	272.50	231.53
700-799	550	202.85-263.04	238.38	308.00	235.73
600-699	1,124	224.53-286.00	259.83	348.00	255.82
500-599	1,130	230.90-310.32	272.80	337.00	266.82
400-499	710	242.71-313.50	279.85	380.00	275.98
-399	269	210.15-309.30	263.72	440.00	273.48

HEIFERS	Volume	Price Range	Average	Top	Last week Avg
+900	302	185.61-222.58	204.30	233.50	195.25
800-899	224	201.30-224.35	213.14	249.00	218.24
700-799	290	172.63-241.87	211.53	280.00	221.58
600-699	695	200.60-250.92	228.82	284.00	228.86
500-599	907	203.52-274.08	242.79	345.00	243.62
400-499	691	219.77-289.38	259.70	331.00	263.58
300-399	188	222.41-288.24	259.87	367.50	255.15
-299	56	208.35-264.87	238.36	340.00	255.24

At **Kawartha Lakes Co-op Auction Market: November 22, 2014 – 186 cows, 16 bulls, 54 veal**

	Price Range	Average	Top
Cows	64.00-137.50	101.80	143.99
Bulls under 1600 lbs	114.99-146.99	130.69	146.99
Bulls over 1600 lbs	114.99-134.00	123.59	134.00
Veal 126-300 lbs	185.00-342.49	252.40	375.00
Veal under 125 lbs	157.49-339.99	270.59	367.49

At **Denfield Livestock Exchange Inc.:** **November 25, 2014 – 132 Fed Cattle, 16 Veal, 11Bulls, 105 Cows, 127 Drop Calves**

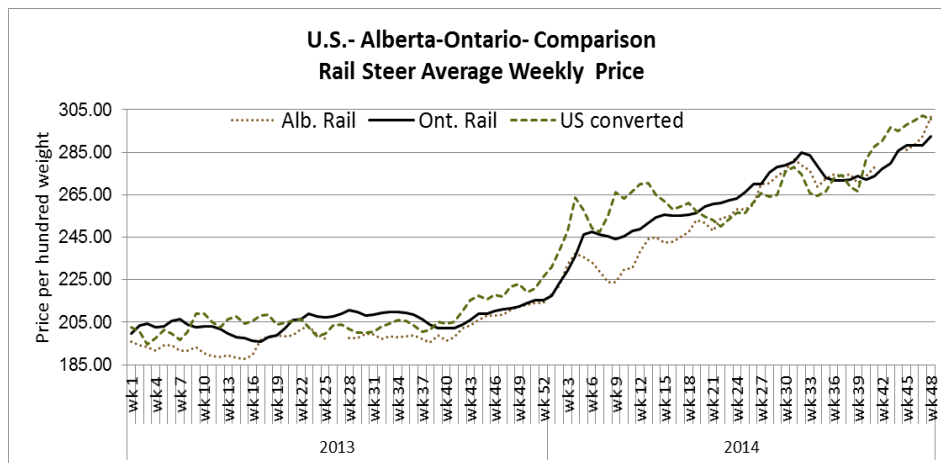
	Price Range	Top		Price Range	Top
Choice steers	175.00-180.00	183.00	Good beef cows	105.00-120.00	138.00
Good steers	170.00-174.00		Good Holstein cows	105.00-120.00	
Choice heifers	175.00-180.00	187.00	D1 & D2 Cows	75.00-85.00	
Good heifers	170.00-174.00		D3 & D4 Cows	55.00-65.00	
Good Holstein veal	180.00-190.00	221.00	Choice drop calves	\$400.00-\$500.00	
Plain and heavy veal	165.00-175.00		Good drop calves	\$300.00-\$400.00	
Good beef bulls	110.00-130.00	147.00	Plain & Newborns	\$200.00-\$300.00	
Good Holstein bulls	105.00-120.00				

At **Renfrew Pontiac Livestock Ltd.:** **November 25, 2014 - 8 Replacement Calves, 148 Cows, 23 Bulls**

	Price Range	Top
Replacement Calves	\$160.00-\$230.00	\$250.00
Cows D1 & D2	110.00-122.00	126.00
Cows D3	95.00-110.00	
Cows D4	70.00-94.00	
Bulls	120.00-136.00	149.00

At **Aylmer Stockyards Inc.:** **November 26, 2014 – 28 Veal, 133 Cows, 5 bulls, 34 Fed cattle**

	Price Range	Avg.	Top
Fed steers, large & med frame +1250 lbs	170.99-178.00	174.59	178.00
Fed heifers, large & med frame +1000 lbs	164.99-169.50	166.90	169.50
Fed heifers, dairy cross 1000 lbs +	119.50-164.50	150.00	164.50
Cows	67.50-127.49	109.49	127.49
Bulls under 1600 lbs	108.49-125.00	114.70	125.00
Veal calves over 600 lbs	154.00-197.99	180.20	197.99
Replacement Calves	\$100.00-\$475.00		\$540.00



The rail price for Alberta this week only, is Live converted to rail.

ONTARIO STOCKER & FEEDER TRADE

Stocker sale at **Brussels Livestock:** **November 21, 2014 – 1,715 stockers**

Steers	Price Range	Average	Top	Heifers	Price Range	Average	Top
1000+	173.00-235.50	211.31	235.50	900+	199.50-233.50	214.86	233.50
900-999	226.00-267.00	241.79	267.00	800-899	217.00-229.00	222.70	238.00
800-899	224.00-272.50	253.97	272.50	700-799	182.00-255.00	226.28	255.00
700-799	226.00-270.00	256.55	270.00	600-699	203.00-258.00	235.71	276.00
600-699	240.00-289.50	267.04	297.00	500-599	208.00-272.00	242.63	280.00
500-599	237.00-312.00	277.82	325.00	400-499	230.00-274.00	258.53	295.00
400-499	269.00-319.00	290.60	330.00	300-399	237.00-270.00	245.38	342.00
399-	240.00-335.00	297.73	335.00	299-	230.00-315.00	266.25	315.00

Stocker sale at **Kawartha Lakes Community Sale Barn Inc: November 22, 2014 – 129** stockers

Steers	Price Range	Average	Top	Heifers	Price Range	Average	Top
600-699	127.49-225.00	170.79	262.50	800-899	157.49-189.99	173.19	189.99
500-599	202.49-285.00	248.30	285.00	500-599	112.00-220.99	181.49	220.99
400-499	142.50-270.00	219.39	270.00				
399-	189.99-300.00	249.10	300.00				

Stocker sale at **Temiskaming Livestock Exchange, November 24, 2014: 92** Stockers

Steers	Price Range	Average	Top	Heifers	Price Range	Average	Top
700-799	209.50-229.00	216.50	230.00	600-699	201.00-228.50	212.55	228.50
600-699	210.00-248.50	238.38	248.50				
500-599	225.00-263.50	236.75	263.50				
400-499	221.00-243.00	236.88	243.00				

Stocker sale at **Vankleek Hill Livestock Exchange, November 24, 2014: 112** Stockers

Steers	Price Range	Average	Top	Heifers	Price Range	Average	Top
600-699	158.00-276.00	224.25	276.00	600-699	180.00-242.00	212.81	242.00
500-599	205.00-286.00	242.34	286.00	500-599	140.00-244.00	183.59	244.00
400-499	200.00-244.00	222.21	244.00	400-499	198.00-262.00	235.28	262.00
399-	220.00-260.00	244.80	260.00				

Stocker sale at: **Community Livestock Exchange, November 25, 2014 – 371** Stockers

Steers	Price Range	Average	Top	Heifers	Price Range	Average	Top
1000+	110.00-223.00	177.20	223.00	900+	101.00-190.00	142.10	190.00
800-899	113.99-217.00	172.80	217.00	800-899	159.00-190.00	173.50	190.00
700-799	134.00-240.00	204.80	240.00	700-799	138.99-208.00	181.10	208.00
600-699	126.00-263.00	203.39	263.00	600-699	179.00-240.00	217.70	240.00
500-599	156.00-293.00	238.89	293.00	500-599	145.00-250.00	211.70	250.00
400-499	198.00-325.00	246.20	325.00	400-499	150.00-259.00	224.80	259.00
399-	220.00-295.00	247.50	330.00	300-399	166.00-250.00	218.40	250.00

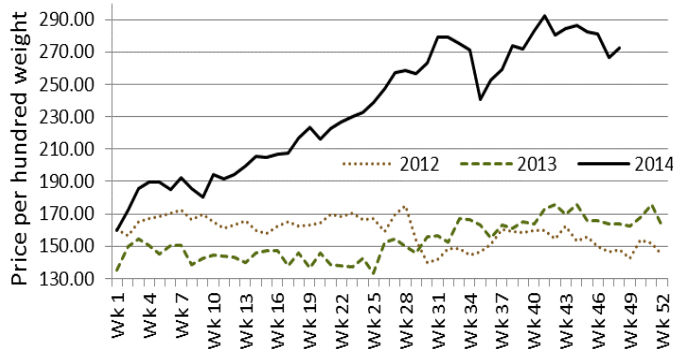
Stocker sale at: **Keady Livestock Market, November 25, 2014 – 497** Stockers, **106** cull cows, **13** bulls

Steers	Price Range	Average	Top	Heifers	Price Range	Average	Top
1000+	190.00-229.00	204.18	229.00	900+	150.00-177.00	170.65	177.00
900-999	195.00-252.00	232.69	252.00	800-899	231.00-249.00	235.91	249.00
800-899	177.50-235.00	211.50	235.00	700-799	177.50-247.00	216.17	247.00
700-799	218.00-265.00	259.88	265.00	600-699	215.00-250.50	237.11	250.50
600-699	245.00-278.00	261.55	291.00	500-599	235.00-297.00	269.13	345.00
500-599	280.00-335.00	300.98	335.00	400-499	265.00-331.00	305.70	331.00
400-499	310.00-351.00	333.15	351.00	300-399	257.50-312.50	287.25	312.50
399-	290.00-365.00	313.00	365.00	299-	232.50-295.00	273.50	295.00
Cull Cows	80.00-111.00	96.49	149.00				

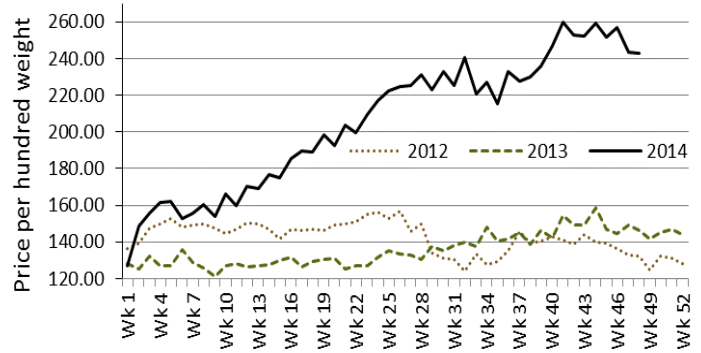
Stocker sale at: **Renfrew Pontiac Livestock Ltd., November 25, 2014 – 778** Stockers

Steers	Price Range	Heifers	Price Range
900-999	185.00-209.00	800-899	185.00-210.00
800-899	210.00-230.00	700-799	195.00-217.00
700-799	230.00-247.00	600-699	210.00-246.00
600-699	247.00-287.00	500-599	240.00-255.00
500-599	286.00-310.00	400-499	257.00-263.00
400-499	300.00-340.00	300-399	280.00-290.00
399-	310.00-340.00		

**Stocker Steers 500-599 lbs
Ontario Weekly Average Price**



**Stocker Heifers 500-599 lbs
Ontario Weekly Average Price**



Stocker sale at **Ontario Livestock Exchange: November 26, 2014 – 721** Stockers

Steers	Price Range	Average	Top	Heifers	Price Range	Average	Top
1000+	232.00-257.00	244.32	257.00	900+	201.00-231.00	215.70	231.00
900-999	239.00-257.50	251.18	257.50	800-899	219.00-239.00	235.09	239.00
800-899	240.00-257.00	250.65	257.00	700-799	182.50-248.75	240.70	248.75
700-799	244.00-259.00	249.07	259.00	600-699	192.00-215.00	205.80	215.00
600-699	240.00-250.00	245.00	250.00				

Stocker sale at: **Ontario Livestock Exchange, November 27, 2014 – 257** stockers

Steers	Price Range	Average	Top	Heifers	Price Range	Average	Top
700-799	162.50-238.00	198.82	260.00	600-699	175.00-212.50	200.93	212.50
600-699	187.50-265.00	227.97	265.00	500-599	200.00-212.50	206.97	245.00
500-599	220.00-292.50	250.50	300.00	400-499	222.50-250.00	238.27	250.00
400-499	207.50-280.00	258.13	295.00	300-399	217.50-247.50	237.50	247.50
399-	230.00-297.50	250.71	297.50				

Stocker sale at: **Ontario Stockyards Inc., November 27, 2014– 957** stockers

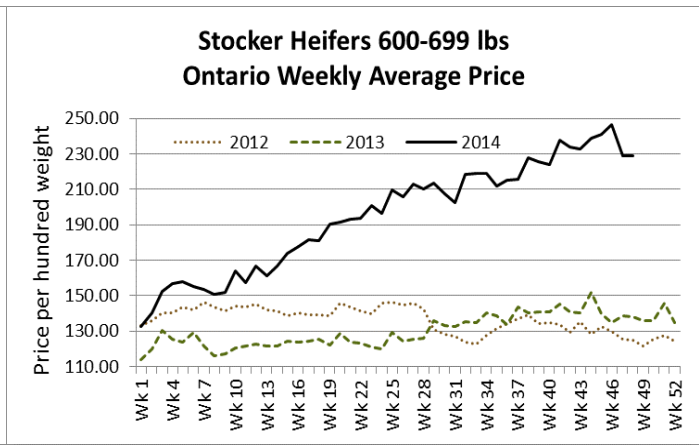
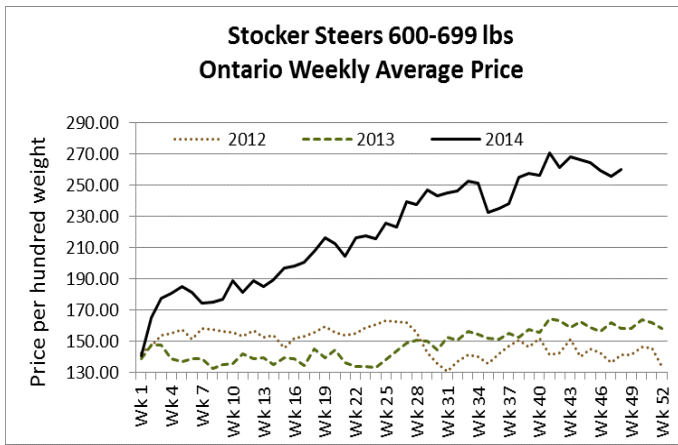
Steers	Price Range	Average	Top	Heifers	Price Range	Average	Top
1000+	135.00-201.00	178.58	201.00	900+	137.00-188.00	167.65	213.00
900-999	169.00-217.00	187.67	235.00	800-899	161.00-210.00	187.52	225.00
800-899	199.00-237.00	220.23	237.00	700-799	180.00-240.00	214.81	259.00
700-799	205.00-274.25	236.04	274.25	600-699	170.00-229.00	200.25	260.00
600-699	200.00-280.00	249.21	292.00	500-599	186.00-247.50	214.51	260.00
500-599	200.00-281.00	239.29	296.00	400-499	217.00-267.50	250.22	312.00
400-499	205.00-270.00	239.73	320.00	300-399	202.50-305.00	259.28	305.00
300-	197.50-290.00	252.60	322.50	299-	230.00-270.00	245.75	270.00

Stocker sale at: **Ottawa Livestock Exchange, November 27, 2014 – 296** stockers

Steers	Price Range	Average	Top	Heifers	Price Range	Average	Top
800-899	153.00-234.00	198.80	234.00	700-799	160.00-220.00	190.71	220.00
700-799	175.00-230.00	208.00	230.00	600-699	165.00-237.00	203.54	250.00
600-699	197.00-267.00	241.40	296.00	500-599	182.00-268.00	227.04	284.00
500-599	180.00-277.00	238.12	290.00	400-499	185.00-280.00	222.10	294.00
400-499	165.00-270.00	236.59	300.00	300-399	105.00-265.00	198.20	265.00
300-	135.00-285.00	210.27	400.00	299-	165.00-210.00	191.25	340.00

Stocker sale at: **Brussels Livestock, November 27, 2014 – 173** stockers

Steers	Price Range	Average	Top	Heifers	Price Range	Average	Top
600-699	260.00-285.00	270.53	285.00	400-499	259.00-287.00	275.10	287.00
400-499	260.00-322.00	284.27	322.00	300-399	240.00-289.00	271.16	289.00
399-	257.00-325.00	291.65	325.00				



ONTARIO STOCKER & FEEDER TRADE SPECIAL FALL STOCKER SALES

Stocker sale at **Keady Livestock Market: November 21, 2014 – 605** stockers

Steers	Price Range	Average	Top	Heifers	Price Range	Average	Top
700-799	276.50	276.50	285.00	700-799	247.50	247.50	247.50
600-699	277.50-297.50	292.09	297.50	600-699	238.00-251.00	245.71	261.00
500-599	295.00-337.00	313.72	337.00	500-599	233.00-284.50	265.24	310.00
400-499	285.00-316.00	305.41	335.00	400-499	274.00-322.00	298.38	322.00
399-	332.50-364.00	344.60	364.00	300-399	300.00-322.50	308.75	367.50
				299-	290.00-304.50	303.13	307.50

Local calf sale – Good quality calves sold at fully steady prices.

Stocker sale at **Brussels Livestock, November 24, 2014: 92** Stockers

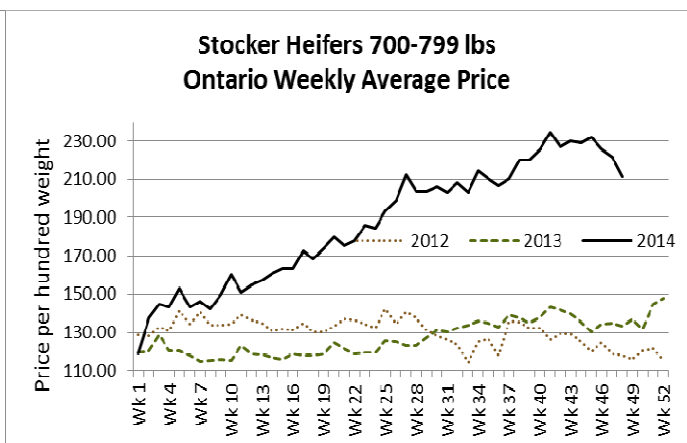
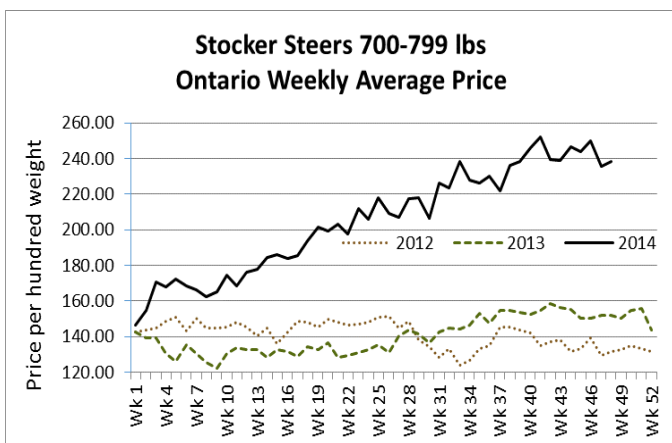
Steers	Price Range	Average	Top	Heifers	Price Range	Average	Top
600-699	236.00-249.00	242.28	250.00	600-699	146.00-205.00	161.93	205.00
400-499	280.00-280.50	280.29	280.50	500-599	220.00-243.00	232.71	243.00

All classes sold on a strong active trade at steady prices.

Stocker sale at **Ontario Stockyards Inc., November 25, 2014- 1,061** Stockers– All Vaccinated Sale!

Steers	Price Range	Average	Top	Heifers	Price Range	Average	Top
800-899	210.00-248.00	235.02	268.00	700-799	204.00-256.00	222.06	276.00
700-799	260.00-290.00	279.73	290.00	600-699	245.00-284.00	261.53	284.00
600-699	280.00-299.75	291.79	301.00	500-599	239.00-300.00	273.11	300.00
500-599	291.50-321.50	302.16	321.50	400-499	250.00-316.00	278.95	316.00
400-499	272.50-338.50	312.08	380.00	300-399	275.00-310.00	287.93	316.00
399-	270.00-348.00	313.30	380.00				

Replacement cattle sold actively with prices \$2.00-\$5.00 higher.



Stocker sale at: **Aylmer Stockyards Inc.: November 26, 2014 – 98** Stockers

Steers	Price Range	Average	Top	Heifers	Price Range	Average	Top
600-699	147.99-272.50	207.50	272.50	900+	146.99-180.00	174.39	180.00
500-599	250.99-289.99	268.10	289.99	700-799	150.00-214.99	184.40	214.99
400-499	250.99-304.00	280.60	304.00	600-699	140.99-227.49	286.60	227.49
				500-599	187.00-268.00	220.00	268.00

Stocker sale at: **Vankleek Hill Livestock Exchange, November 26, 2014- 375** Stockers

Steers	Price Range	Average	Top	Heifers	Price Range	Average	Top
900-999	176.00-226.00	198.96	226.00	800-899	156.00-204.00	183.03	204.00
800-899	185.00-234.00	203.31	234.00	700-799	172.00-280.00	206.03	280.00
700-799	180.00-256.00	224.52	308.00	600-699	180.00-238.00	213.90	250.00
600-699	200.00-280.00	230.14	348.00	500-599	200.00-276.00	221.40	276.00
500-599	200.00-285.00	243.43	290.00	400-499	212.00-296.00	233.09	296.00
400-499	200.00-308.00	241.56	308.00	300-399	217.00-277.00	244.12	277.00

ALBERTA DIRECT TRADE

Week Ending Thursday, Nov 20, 2014

Steers	Live	179.00-182.00	Flat rail	N/T
Heifers	Live	N/T	Flat rail	N/T

QUEBEC ELECTRONIC AUCTION MARKET (F.O.B. THE FEEDLOT)

	Price	Change from Last Week
Week Ending Thursday, Nov 27, 2014	288.00-290.75	+5.42

U.S. TRADE (U.S. funds)

Week Ending Thursday, Nov 27, 2014

Choice and Select Steers and Heifers:	Live	172.00-173.00
	Rail	266.00-267.00

U.S. BOXED BEEF CUT-OUT VALUES (U.S. funds)

	Choice 600-900	Select 600-900
Current Five Day Average:	256.06	242.97

LIVE CATTLE EXPORTS-ONTARIO

	Week ending Nov 8, 2014	Week ending Nov 1, 2014	Year to Date
Total live slaughter cattle exported from Ontario to the U.S.	4,241	4,849	153,750
Steers & Heifers	1,149	1,303	35,755
Cows	2,729	3,032	96,268
Bulls	363	524	21,727

AVERAGE CARCASS WEIGHTS – CANADA

	Steers	Heifers
Nov 22, 2014	905	813
Nov 23, 2013	884	798

FEDERALLY INSPECTED CANADIAN KILL

	Week Ending Nov 22, 2014	# of hd Change (Week Ago)	YTD	% Change (Year Ago)
Grand Total	53,205	+6,375	2,436,532	+4%
Western Slaughter	39,783	+5,108	1,875,745	+5%
Eastern Slaughter	13,422	+1,267	560,787	+0%

USDA ESTIMATED CATTLE KILL

	Week Ending November 29, 2014	Previous Week	Year Ago
Grand Total	496,000	567,000	556,000

BEEF EXPORTS-CANADA

	United States Jan 1 – Sept 30	Change from last year YTD	Mexico Jan 1 – Sept 30	Change from last year YTD
Total	163,885 tonnes	+12% or up 17,799 tonnes	17,034 tonnes	+43% or up 5,146 tonnes

LIVE CATTLE-CANADA

IMPORTS <i>Jan 1- Sept 30</i>		EXPORTS <i>Jan 1- Nov 15, 2014</i>		<i>Export % change from 2013 YTD</i>
Pure bred	2,196	Slaughter steers & heifers	351,515	+12%
Non-pure bred	30,447	Feeder steers & heifers	391,173	+49%
		Cows & Bulls	304,649	-5%

BEEF PRODUCTION-CANADA

	<i>Jan 1 – Nov 22, 2014</i>	<i>Last Year Same Time</i>	<i>% Change</i>	<i>Change in tonnes YTD</i>
Fed	785,865 tonnes	755,406 tonnes	+4%	+30,459 tonnes
Non-fed	114,529 tonnes	123,602 tonnes	-7%	-9,073 tonnes

BEEF IMPORTS-CANADA

	<i>Jan 1 – Nov 22, 2014</i>	<i>Last Year Same Time</i>	<i>% Change</i>	<i>Change in tonnes YTD</i>
United States	122,725 tonnes	157,603 tonnes	-22%	-34,878 tonnes
Non-NAFTA	51,282 tonnes	38,421 tonnes	+33%	+12,861 tonnes
Total	180,429 tonnes	201,648 tonnes	-11%	-21,219 tonnes

CHICAGO MERCANTILE EXCHANGE

Closing quotes on futures today were as follows:

Live Cattle		Feeder Cattle		Corn		Soybeans		Canadian \$	
\$/cwt US		\$/cwt US		\$/bu US		¢/bu		\$/bu US	
Dec	168.87 -0.37	Jan	231.07 +0.57	Dec	3.756 -2.4	Jan	10.160 -31.0	Spot	87.54 -0.63
Feb	169.22 -0.45	Mar	230.20 +0.85	Mar	3.886 -2.6	Mar	10.224 -30.2	Dec	87.40 -1.62
Apr	159.00 +0.70	Apr	230.77 +0.82	May	3.970 -3.2	May	10.292 -29.4	Mar	87.21 -1.62
Jun	161.30 +0.70	May	230.85 +0.90	Jul	4.036 -3.2	Jul	10.332 -29.6	Jun	87.02 -1.61
Aug	158.55 +1.50	Aug	231.42 +0.90	Sep	4.090 -3.4	Aug	10.326 -29.2	Sep	86.82 -1.61
Oct	159.52 +1.30	Sep	231.00 +0.50	Dec	4.166 -3.6	Sep	10.114 -26.4	Dec	86.67 -1.59

Beef Farmers of Ontario, 130 Malcolm Road, Guelph, ON N1K 1B1 Phone: (519) 824-0334 Fax: (519) 824-1930 or email: markets@ontariobeef.com

UPCOMING SPECIAL FALL STOCKER/BRED COW SALES!

Nov 29 10:00 am	Manitoulin Livestock Exchange	Stockers and Bred Cows
Nov 29 11:00 am	Denfield Livestock Exchange	Stockers and Bred Cows
Dec 3 11:00 am	Kawartha Lake Community Sale Barn	Stocker Sale
Dec 4 11:00 am	Ontario Stockyards Inc	Special Fall Yearling Sale
Dec 5 5:00 pm	Keady Livestock Market	Bred Cow Sale
Dec 17 11:00 am	Kawartha Lakes Community Sale Barn	Stocker Sale

Comments for the week ending November 27, 2014

There were 720 fed steers and heifers sold through auction markets this week up 158 head from last week and 158 more than last year at this time. Fed steers traded from \$169.71-\$187.23 with a weekly weighted average price of \$178.05 up \$3.31 from last week and \$54.53 stronger than year ago prices. This week's average is also a new weekly high. Fed heifers sold from \$154.96-\$175.29 averaging \$168.29 up \$2.83 from last week and \$41.66 higher than year ago prices. Auction markets reported a very strong active trade with prices steady to stronger for most of the week and \$2.00 higher by week's end.

Ontario rail grade prices improved as the week progressed. Steers started out this reporting period at \$288.00-\$290.00 dressed and increased to \$292.00-\$294.00 by Monday, ending the week at \$294.00-\$296.00 dressed. Heifers followed the same pricing trend starting out at \$287.00-\$289.00 dressed, up to \$291.00-\$293.00 on Monday and \$293.00-\$295.00 on Wednesday. The prices reported are for sales on that given day, but delivery times vary. This week's average prices are up \$4.25 from last week and \$80.75 stronger than last year at this time. This week's average prices are also new average highs.

Larger receipts of cull cows came to market this week with 3,556 head sold through auction markets, up 600 from last week but 273 less than last year at this time. Cull cows traded from \$82.24-\$119.61 averaging \$101.46 down \$1.01 from last week and \$37.20 stronger than year ago prices. Auction markets all reported a good strong demand with prices mostly steady.

The replacement cattle market saw a few more head on offer this week as 8,128 sold through auction markets, up 1,206 head from last week and 743 more than last year at this time. Out of that 8,128 head, 5,258 of those were in the 400-700 lbs weight categories. Auction markets reported active trading with good quality and vaccinated cattle selling fully steady to stronger, up to \$2.00-\$3.00 higher. Medium quality and second cut were barely steady. Actual average prices this week saw lighter cattle trading steady to higher while some categories of heavier cattle saw easier prices on lighter volumes. Steers 400-500 lbs averaged \$3.87 stronger than last week, 500-600 lbs were up \$5.98, 600-700 lbs up \$4.01, 700-800 lbs up \$2.65, 800-900 lbs down \$9.41, 900-1000 lbs down \$2.57 and steers over 1000 lbs averaged \$0.44 lower than last week's average prices. Heifers 300-400 lbs were up \$4.72 from last week on average, 400-500 lbs down \$3.88, 500-600 lbs down \$0.83, 600-700 lbs down \$0.04, 700-800 lbs down \$10.05, 800-900 lbs down \$5.10 and heifers over 900 lbs averaged \$9.05 higher than last week on average.

The Quebec Electronic Market traded stronger again this week with prices reported from \$292.75-\$294.25 up \$4.24 from last week on average.

Alberta direct trade this week has been very light at higher prices, up \$3.00-\$5.00 on the live market, with steers reported from \$179.00-\$182.00. Canfax reported US packer buying interest this week was supportive.

The U.S. cash cattle trade the week ending Nov 20th was light on Friday afternoon with stronger prices. The USDA Mandatory Price Report saw live sales range from \$168.00-\$174.50 live, with steers averaging \$171.15 up from \$169.90 the previous week while heifers averaged \$171.83 live up from \$170.21. On the rail prices ranged from \$265.00-\$270.00 dressed with steers averaging \$267.56 up from \$264.80 the previous week, while heifers averaged \$267.43 up from \$265.37. This week light to moderate trade developed on Wednesday afternoon with live prices steady to last week from \$168.00-\$173.00 averaging \$171.96 for steers and \$172.22 for heifers. Dressed deals ranged from \$264.00-\$270.00 around \$1.00 lower than last week with steers averaging \$266.41 dressed and heifers at \$266.94. Today, Friday, a few bids have surfaced at \$265.00-\$267.00 dressed in the north but sellers don't seem interested. Asking prices are holding firm at \$173.00-\$174.00 live and \$270.00 plus dressed, but at this point it looks like business for the week, as light as it was, is completed.