



Weekly Market Information Report for the week ending Thursday February 18, 2021

The following information is collected from various sources and disseminated by Beef Farmers of Ontario.

ONTARIO DIRECT TO PACKER RAILGRADE CATTLE TRADE

Prices are on a carcass weight basis before grade and weight discounts. Weekly Range:

A Grade Steers	240.00-241.00 (majority 240.00)
A Grade Heifers	239.00-240.00

ONTARIO LIVE CATTLE TRADE

Ontario auction sales this week saw weighted average price ranges for:

FED CATTLE	Volume	Price Range	Average	Top	Last Week Avg
Large Frame Steers +1250	45	123.13-145.78	133.96	148.00	135.45
Medium Frame Steers +1250	31	124.06-137.68	130.69	150.50	135.28
Large & Medium Frame Steers +1250	76	122.03-141.57	131.70	150.50	135.93
Large Frame Heifers +1000	52	129.22-143.23	137.94	162.50	130.91
Medium Frame Heifers +1000	96	130.93-143.51	138.49	148.50	134.65
Large & Medium Frame Heifers +1000	148	127.35-143.81	137.95	162.50	133.16
Fed steers, Dairy & Dairy Cross +1250	62	107.90-115.59	111.24	118.00	107.50
Fed heifers, Dairy & Dairy Cross +1000	73	84.22-105.95	94.88	111.00	94.71
Cows - All Weights	2,450	61.56-86.88	72.90	113.00	68.53
Bulls - All Weights	55	87.90-107.78	98.68	150.00	87.09

STOCKERS - Large and Medium Frame

STEERS	Volume	Price Range	Average	Top	Last Week Avg
1000+	310	156.37-182.91	166.39	189.50	175.38
900-999	256	174.84-187.09	181.67	191.50	180.48
800-899	131	180.28-192.85	188.24	199.00	181.63
700-799	367	181.41-212.41	201.13	222.00	192.27
600-699	282	193.27-226.78	215.55	240.00	215.55
500-599	214	205.99-243.28	227.51	255.00	232.47
400-499	54	212.44-251.96	235.02	268.00	238.96
-399	26	178.50-210.46	195.83	335.00	212.71

HEIFERS	Volume	Price Range	Average	Top	Last Week Avg
+900	295	132.84-165.13	151.42	170.00	154.28
800-899	74	136.74-167.58	159.88	181.00	156.63
700-799	152	160.92-187.79	175.24	197.00	168.89
600-699	209	166.63-201.36	185.87	210.50	190.42
500-599	154	164.42-205.70	191.15	219.00	197.48
400-499	72	155.55-199.63	178.12	238.00	192.20
300-399	18	165.31-189.19	176.75	205.00	181.93
-299	4	N/T			146.00

At Kawartha Lakes Community Sale Barn, February 13, 2021 – 1 fed cattle, 164 cows, 5 bulls, 29 veal, 11 stockers

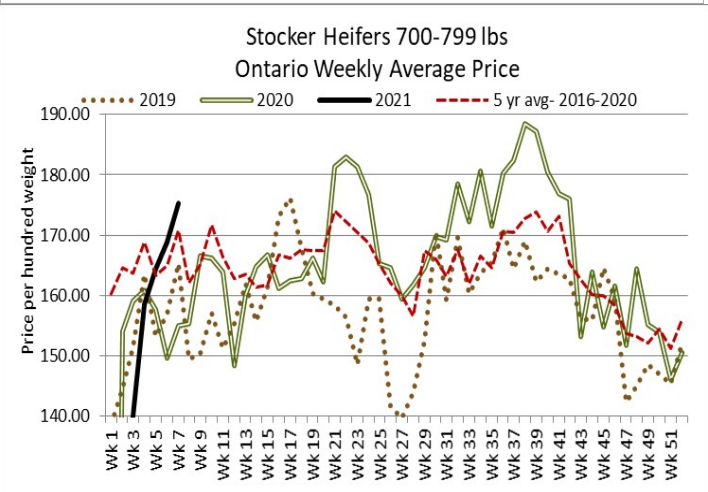
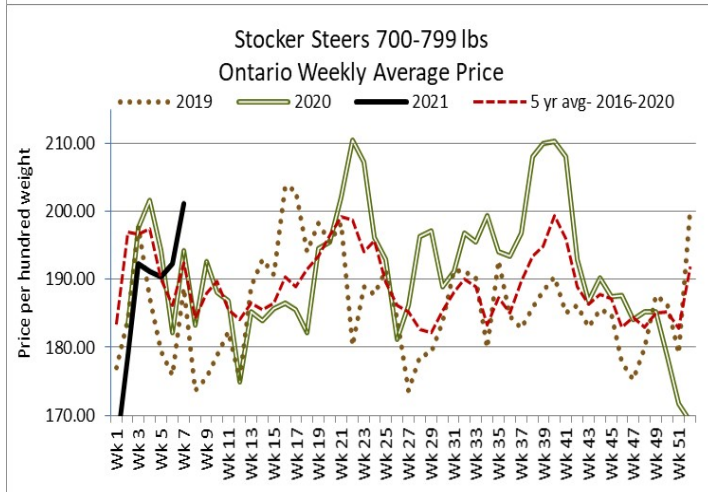
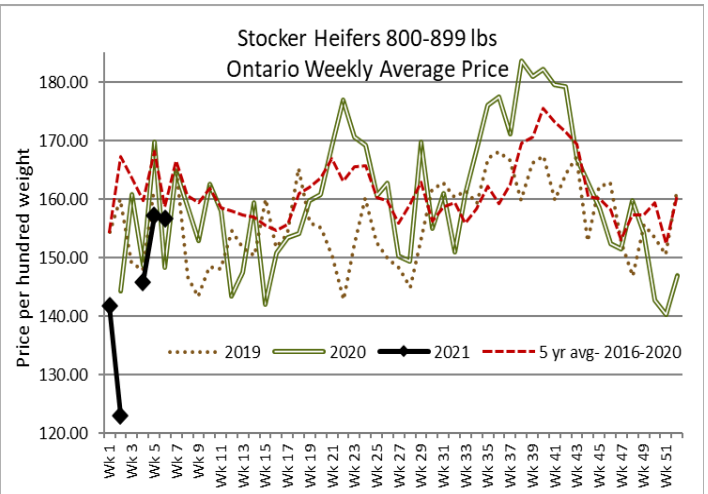
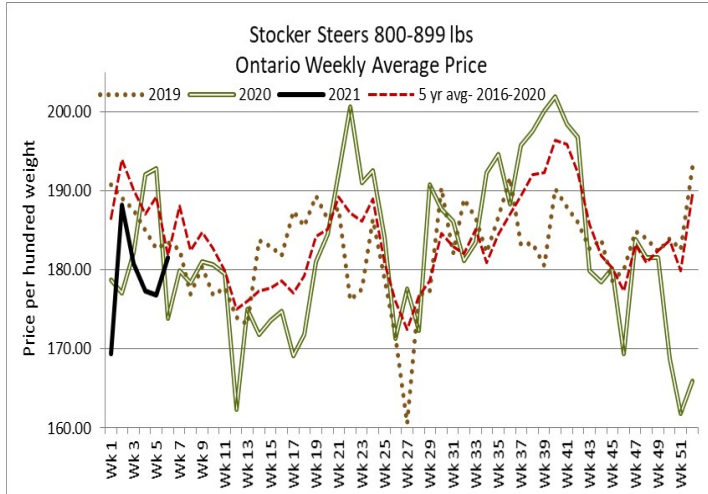
	Price Range	Avg.	Top
Cows	56.00-82.00	67.14	96.00
Bulls under 1600 lbs	79.00-89.00	84.67	89.00
Bulls over 1600 lbs	95.00-99.00	96.40	99.00
Veal calves 600 lbs & over	110.00-150.00	120.45	150.00

Denfield Livestock Exchange Inc., February 16, 2021: 80 Fed Cattle, 10 Veal, 60 Cows, 22 stockers.

	Price Range	Average	Top
Large & Medium Frame Fed Steers +1250 lbs	133.25-146.00	140.04	150.50
Large & Medium Frame Fed Heifers +1000 lbs	141.25-146.00	143.92	162.50
Cows	57.50-84.00	70.64	89.00
Veal over 600 lbs	120.00-125.00	122.13	135.00

At Aylmer Stockyards Inc.: February 17, 2021 – 62 veal, 284 Cows, 22 fed cattle, 1 bull, 23 stockers

	Price Range	Average	Top
Fed Heifers, Dairy & Dairy Cross	68.00-107.49	90.90	107.49
Cows	52.00-100.49	74.39	108.00
Veal over 600 lbs	89.00-157.00	119.39	157.00



ONTARIO STOCKER & FEEDER TRADE

Stocker sale at Brussels Livestock: February 12, 2021 – 956 Stockers

Steers	Price Range	Average	Top	Heifers	Price Range	Average	Top
1000+	153.00-176.00	166.35	181.75	900+	135.00-167.00	153.06	170.00
900-999	164.50-182.50	174.73	187.00	800-899	140.00-164.50	158.857	164.50
800-899	180.00-189.25	187.70	195.00	700-799	153.00-193.75	172.37	193.75
700-799	185.00-207.50	195.77	207.50	600-699	166.00-203.00	188.62	210.00
600-699	199.00-228.00	218.67	240.00	500-599	179.00-206.00	195.18	219.00
500-599	217.00-245.00	232.25	255.00	400-499	147.00-208.00	170.27	218.00
400-499	212.00-266.00	243.94	266.00				

Stocker sale at: **Community Livestock Exchange: February 16, 2021 – 72 Stockers**

Steers	Price Range	Average	Top	Heifers	Price Range	Average	Top
700-799	180.00-189.99	182.69	189.99	600-699	164.99-195.99	182.09	195.99
600-699	170.99-210.00	190.30	210.00	500-599	135.00-216.99	196.79	216.99
500-599	169.99-227.00	212.40	227.00	400-499	159.00-212.99	193.30	212.99
400-499	212.50-235.00	229.70	235.00				

Stocker sale at: **Renfrew Pontiac Livestock: February 16, 2021 – 144 Stockers**

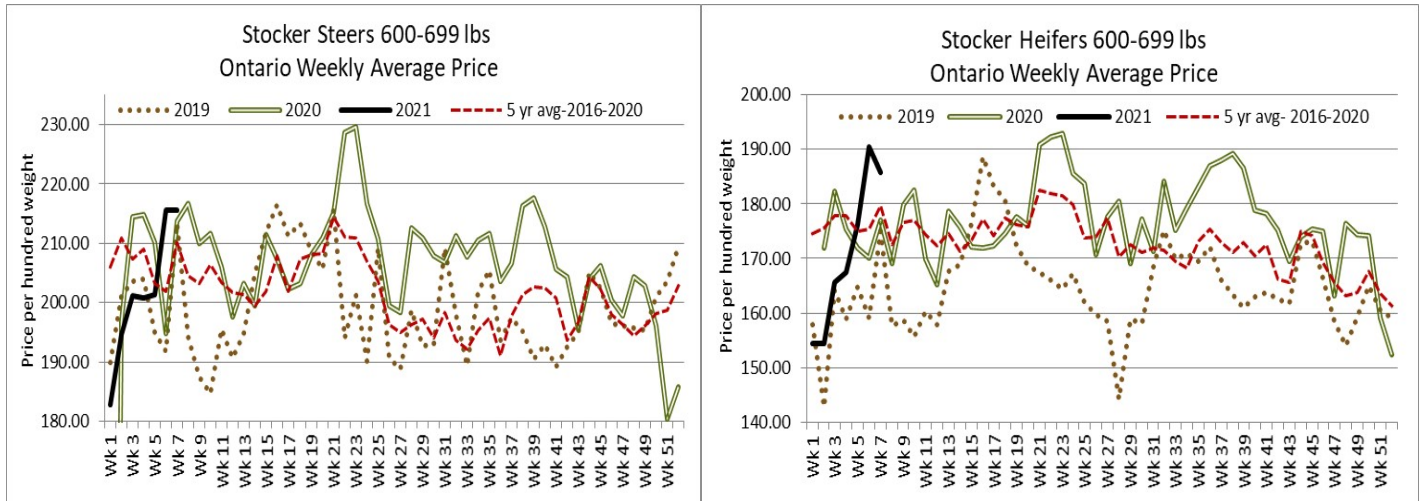
Steers	Price Range	Average	Top	Heifers	Price Range	Average	Top
800-899	140.99-177.00	163.79	177.00	700-799	126.00-184.00	149.90	184.00
700-799	131.00-196.99	180.49	196.99	600-699	141.99-177.00	164.59	177.00
600-699	152.49-222.00	204.80	222.00	500-599	129.00-199.99	175.00	190.99
500-599	172.50-229.00	215.49	229.00	400-499	139.99-194.99	169.39	194.99

Stocker sale at **Ontario Livestock Exchange, February 17, 2021 – 336 stockers**

Steers	Price Range	Average	Top	Heifers	Price Range	Average	Top
1000+	162.00-189.50	169.36	189.50	700-799	165.00-171.00	166.20	171.00
900-999	184.00-191.50	188.05	191.50				

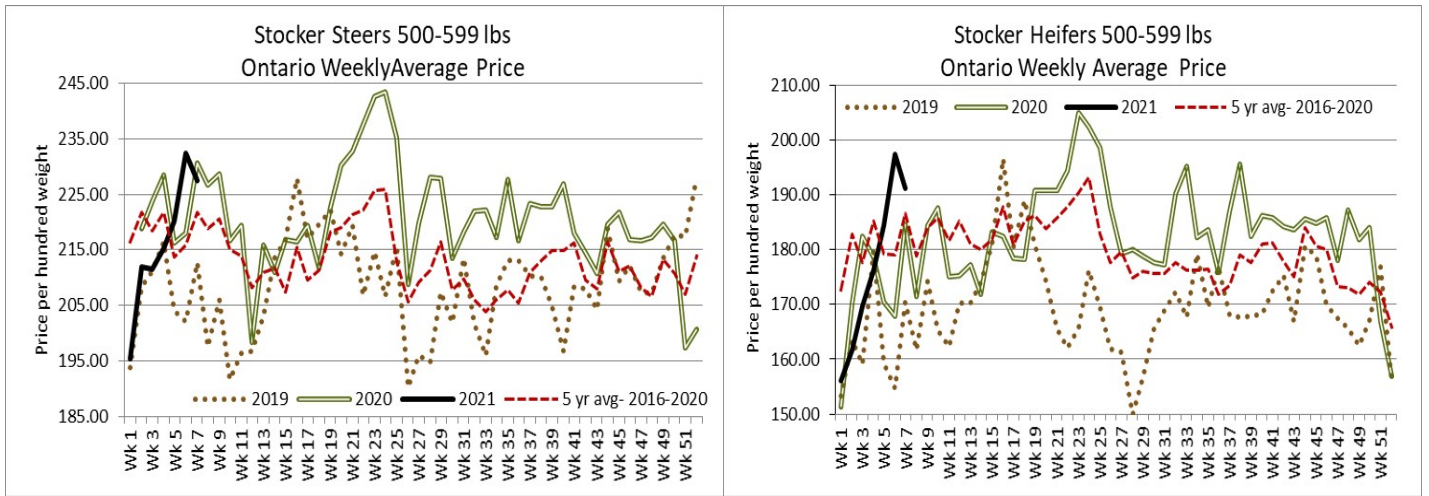
Stocker sale at **Ontario Livestock Exchange: February 18, 2021 – 144 Stockers**

Steers	Price Range	Average	Top	Heifers	Price Range	Average	Top
800-899	146.00-176.00	160.92	180.00	900+	120.00-167.00	150.44	167.00
700-799	147.50-195.00	173.28	195.00	800-899	123.00-172.00	164.63	172.00
600-699	162.50-229.00	210.63	229.00	700-799	142.50-170.00	153.50	170.00
500-599	200.00-230.00	224.29	230.00	600-699	155.00-175.00	172.22	175.00
400-499	210.00-240.00	223.33	250.00	500-599	150.00-195.00	184.75	195.00
				400-499	175.00-197.50	190.00	197.50



Stocker sale at **Ottawa Livestock Exchange: February 18, 2021 – 101 Stockers**

Steers	Price Range	Average	Top	Heifers	Price Range	Average	Top
700-799	194.00-198.00	195.83	198.00	700-799	156.00-175.00	171.20	175.00
600-699	186.00-218.00	204.55	224.00	600-699	174.00-195.00	179.84	195.00
500-599	226.00-236.00	231.43	246.00	500-599	176.00-197.00	189.53	197.00
400-499	130.00-254.00	192.00	254.00	400-499	145.00-190.00	167.77	238.00

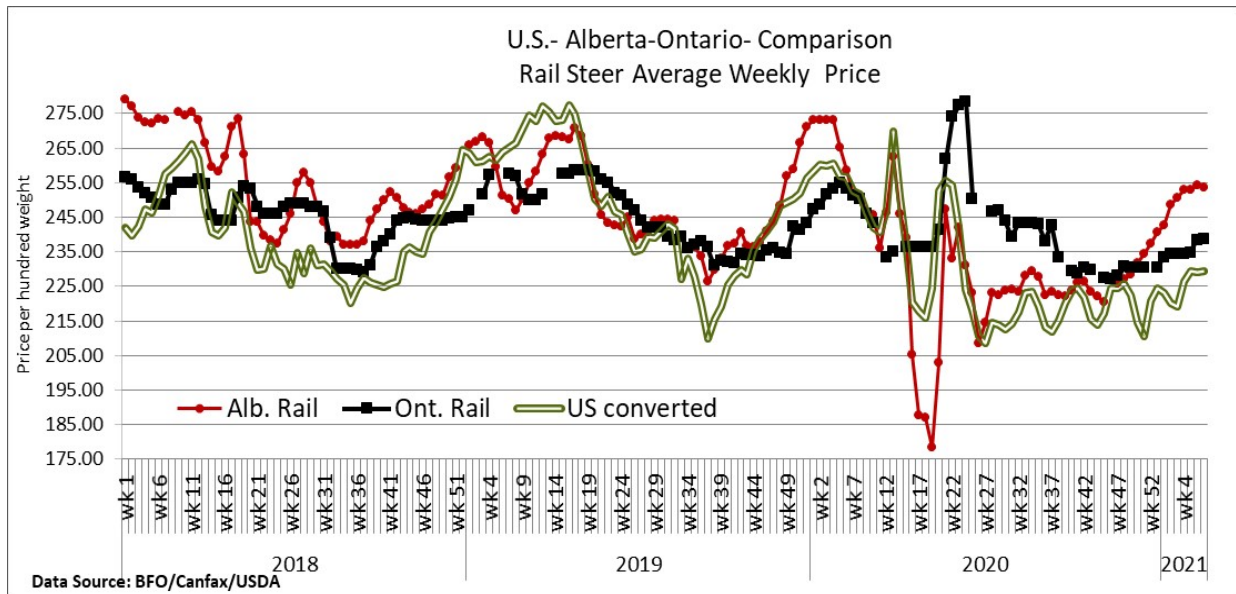


Stocker sale at: **Ontario Stockyards Inc: February 18, 2021– 794 Stockers**

Steers	Price Range	Average	Top	Heifers	Price Range	Average	Top
1000+	90.00-147.00	116.56	156.00	900+	110.00-144.00	131.86	158.00
900-999	157.00-178.50	169.11	181.00	800-899	141.00-172.50	161.92	172.50
800-899	188.00-199.00	194.61	199.00	700-799	169.00-190.00	182.08	197.00
700-799	192.50-222.00	211.89	222.00	600-699	170.00-210.50	192.02	210.50
600-699	210.00-232.00	224.94	240.00	500-599	172.50-216.00	196.10	216.00
500-599	210.00-254.00	234.93	254.00	400-499	167.50-206.00	191.71	206.00
400-499	240.00-268.00	255.17	268.00	300-399	185.00-205.00	195.94	205.00
399	190.00-240.00	215.00	240.00				

CATTLE EXPORTS-ONTARIO

	Week ending Jan 30, 2021	Week ending Jan 23, 2021	Year to Date 2021
Total live slaughter cattle exported from Ontario to the U.S.	3,625	3,995	14,127
Steers & Heifers & Cows	3,498	3,838	13,468
Bulls	127	157	659



Data Source: BFO/Canfax/USDA

ALBERTA DIRECT TRADE

For the week ending February 17, 2021

Steers	Live FOB	N/T	Rail FOB	252.00-255.50
Heifers	Live FOB	N/T	Rail FOB	253.00-253.50

U.S. TRADE (U.S. funds)

For the week ending February 17, 2021

Choice and Select Steers and Heifers:	Live	112.00-116.50
	Rail	178.00-182.00

QUEBEC ELECTRONIC AUCTION MARKET (F.O.B. THE FEEDLOT)

For the week ending February 17, 2021	Price	Change from Last Week
	243.50-245.0	+3.09

FEDERALLY INSPECTED CANADIAN PROCESSING

	Week Ending Feb 13, 2021	# of hd change from week ago	YTD	% Change (Week Ago)	% Change (Year Ago)
Grand Total	62,953	+3,671	372,330	+1%	+11%
Western Slaughter	49,578	+4,373	290,257	-0%	+11%
Eastern Slaughter	13,375	-702	872,073	+4%	+10%

AVERAGE CARCASS WEIGHTS – CANADA

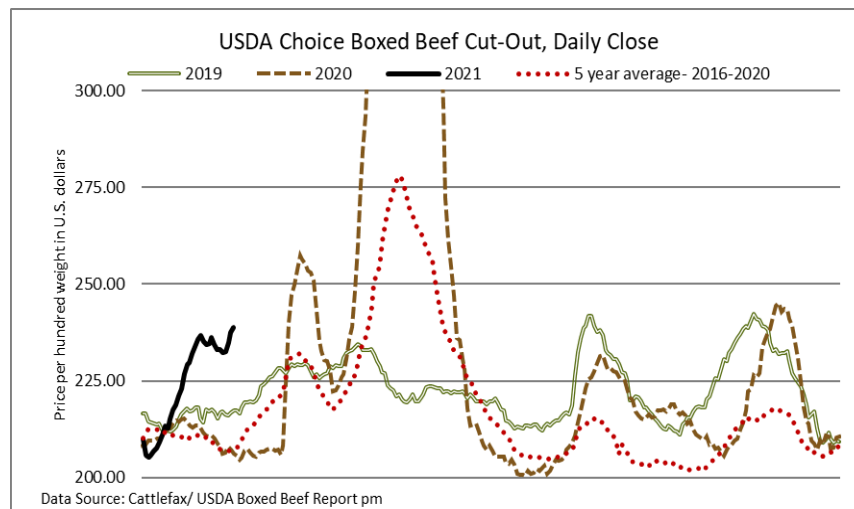
	Steers	Heifers
Feb 13, 2021	929	860
Feb 6, 2021	930	863
Feb 8, 2020	910	837

USDA ESTIMATED CATTLE PROCESSING VOLUME

	Week Ending Feb 20, 2021	Previous Week	Year Ago
Grand Total	552,000	608,000	626,000

U.S. BOXED BEEF CUT-OUT VALUES (U.S. funds)

	Choice 600-900	Select 600-900
Current Five Day Average	235.19	223.50



BEEF EXPORTS – CANADA

	United States Jan 1- Dec 31/20	Change from last year YTD	Mexico Jan 1- Dec 31/20	Change from last year YTD
Total	309,562 tonnes	-2% or -7,138 tonnes	15,155 tonnes	-9 or -1,469 tonnes
	Japan Jan 1- Dec 31/20	Change from last year YTD	China Jan 1- Dec 31/20	Change from last year YTD
Total	45,147 tonnes	-8% or -4,186 tonnes	10,504 tonnes	-13 or -1,548 tonnes

LIVE CATTLE – CANADA

IMPORTS		Import % change from 2019 YTD	EXPORTS		Export % change from 2020 YTD
Jan 1- Dec 31/20			Jan 1- Feb 6/21		
Pure bred	4,190	-25%	Slaughter steers & heifers & cows	49,484	+4%
Non-pure bred	272,533	+1%	Feeder cattle & calves	5,200	-5%
			Bulls	2,722	+7%

BEEF PRODUCTION – CANADA

	Jan 1 – Feb 13/21	Last Year Same Time	% Change
Fed	128,954 tonnes	108,728 tonnes	+19%
Non-fed	19,596 tonnes	21,219 tonnes	-8%

BEEF IMPORTS – CANADA

	Jan 1 – Feb 13/21	Last Year Same Time	% Change
United States	12,618 tonnes	13,148 tonnes	-4%
Non-CUSMA	5,782 tonnes	3,942 tonnes	+47%
EU-28 (beef/veal total)	884 tonnes	1,669 tonnes	-47%
Total	20,211 tonnes	19,635 tonnes	+3%

CHICAGO MERCANTILE EXCHANGE

Closing quotes on futures today were as follows:

Live Cattle			Feeder Cattle			Corn			Soybeans			Canadian \$		
Feb	115.92	+0.80	Mar	139.12	+0.92	Mar	5.426	-7.4	Mar	13.772	+2.2	Spot	79.23	+0.37
Apr	123.67	+0.75	Apr	142.67	+0.92	May	5.416	-7.2	May	13.800	+3.4	Mar	79.23	+0.37
Jun	120.52	+0.75	May	145.72	+1.10	Jul	5.330	-6.0	Jul	13.676	+3.0	Jun	79.23	+0.36
Aug	118.42	+0.67	Aug	153.90	+1.05	Sep	4.816	-1.6	Aug	13.274	+5.6	Sep	79.21	+0.36
Oct	121.35	+0.67	Sep	155.00	+0.87	Mar	4.600	+0.6	Sep	12.426	+10.0	Dec	79.19	+0.35
Dec	124.62	+0.82	Oct	155.55	+0.60	May	4.676	+1.0	Nov	11.962	+9.6	Mar	79.18	+0.35

Beef Farmers of Ontario, 130 Malcolm Road, Guelph, ON N1K 1B1 Phone: (519) 824-0334 Fax: (519) 824-9161 or email: markets@ontariobeef.com

OBCFPP LICENCE CHANGES

No longer licenced: Livestock Dealer

Paletta International Corporation, 4450 Paletta Court, Burlington, L7L 5R2

ONTARIO STOCKER & FEEDER TRADE SPECIAL FALL SALES

Feb 23	4:00 pm	Denfield Livestock Exchange	Herd Dispersal- 18 bred cows, 17 yearling calves, vacc.
Mar 9	11:00 am	Ontario Stockyards Inc	All Vaccinated Spring Stocker Sale
Mar 12	11:00 am	Community Livestock Exchange	Quinte Cattlemen's Stocker Sale
Mar 17	10:00 am	Kawartha Lakes Community Sales Barn	Special Stocker Sale

Comments for the week ending February 18th

Due to inclement winter weather in parts of the province this week and sub-zero temperatures, volumes were lighter across the board. 224 fed steers and heifers sold through auction markets this week down 117 head from last week and 154 fewer than the same time last year. Fed steers sold from \$122.03-\$141.57 averaging \$131.70 down \$4.23 from last week on average and \$7.23 easier than year ago prices. Fed heifers traded from \$127.35-\$143.81 averaging \$137.95 up \$4.79 from last week but \$1.62 below year ago prices. Auction markets reported trade as active on a good demand with prices steady to stronger, up by \$2.00 cwt. Lighter receipts and quality of offerings influenced the average prices this week also noting the average weight for the steers this week was 1,634 lbs with one auction noting weights averaging 1,710.

Ontario railgrade prices this week were steady for most of the week with steers at \$240.00 dressed and heifers \$239.00-\$240.00, mostly \$240.00. By Wednesday, prices were reported by producers from \$240.00-\$241.00 dressed for steers with another packer starting to purchase. The cattle that sold this week were for delivery anywhere from one to four weeks out. This week's average prices were up by \$0.25 from last week on average, but \$13.75 below year ago prices.

Lighter receipts of 2,450 cull/fed cows sold through auction markets this week on continued strong demand, with volumes down 421 head from last week and 355 fewer than this week last year. Cows sold from \$61.56-\$86.88 averaging \$72.90 up \$4.37 from last week and \$6.71 stronger than year ago prices. Auction markets reported a strong active trade with prices \$3.00-\$5.00 cwt higher. By mid week prices were holding steady to the week's increases but ended the week up another \$4.00 cwt from early week trade.

2,618 stocker and feeder cattle sold through auction markets this week, down 667 from last week and 1,341 fewer than the same time last year. Auction markets reported calves as strong to \$3.00-\$5.00 cwt higher, but as the week progressed trade was holding steady to stronger. Heavier cattle were reported as steady for most of the week but ended the week on a stronger note. Actual average prices this week saw steers 400-500 lbs down \$3.94 from last week, 500-600 lbs down \$4.96, 600-700 lbs no change, 700-800 lbs up \$8.86, 800-900 lbs up \$6.61, 900-1000 lbs up \$1.19 and steers 1000 lbs and over averaged \$8.99 easier than the week before. Heifers from 300-400 lbs were down \$5.18, 400-500 lbs down \$14.08, 500-600 lbs down \$6.33, 600-700 lbs down \$4.55, 700-800 lbs up \$6.35, 800-900 lbs up \$3.25 and heifers 900 lbs plus averaged \$2.86 easier than last week's weighted average prices.

The Quebec electronic market on Wednesday sold from \$243.50-\$245.00 dressed, up \$3.09 from the previous week on average.

Alberta direct trade this week has been light with trade sitting "either side" of \$255.00 delivered on a dressed basis notes Canfax, fully steady to last week. Canfax reports: "Most of the cattle that traded this week were being scheduled for the first half of March delivery. Usually fed cattle prices decline into February but this has not been the case this year as prices continue to hover around annual highs."

The U.S. cash cattle trade the week ending February 12th saw live sales ranged from \$111.00-\$116.00 with the south only reaching as high as \$114.00. The USDA Mandatory Price report lists live steers average at \$113.83 up \$0.20 from the previous week while heifers averaged \$113.60 down \$0.04. On the rail trade ranged from \$178.00-\$185.00 dressed, with steers averaging \$180.10 up \$0.84 while heifers averaged \$180.08 up \$1.20 from the previous week.

This week the U.S. cash trade has been very quiet to start with this week's offering reported as higher in Texas in volume, but lower in all other feeding states. Asking prices in the south were around \$116.00-\$117.00 live in the south and \$188.00 dressed in the north. Many feeding states were dealing with unusual harsh winter weather causing disruptions in transportation and power outages resulting in delays at processing facilities, with two plants in the south having to close for a couple of days due to the weather related power outages. Producers are struggling to keep up with chores as the weather continued. Marketing took a back seat most of the week as everyone dealt with the weather and the hardship it created. Light trade surfaced on Thursday with live deals in the south at \$114.00 fully steady to last week's southern business. In the north most trade was reported on a live basis from \$113.00-\$114.00 and a few sales at \$180.00 dressed, fully steady with last week's northern trade. Asking prices on the remaining cattle are at \$116.00 live in the south and \$185.00 plus dressed in the north. Bids today have surfaced at \$114.00-\$115.00 live in the south and \$112.00-\$115.00 live and \$180.00-\$181.00 dressed but no sales have been reported. Business is expected to continue this afternoon but trade could be delayed until after the Cattle On Feed Report is released this afternoon.