



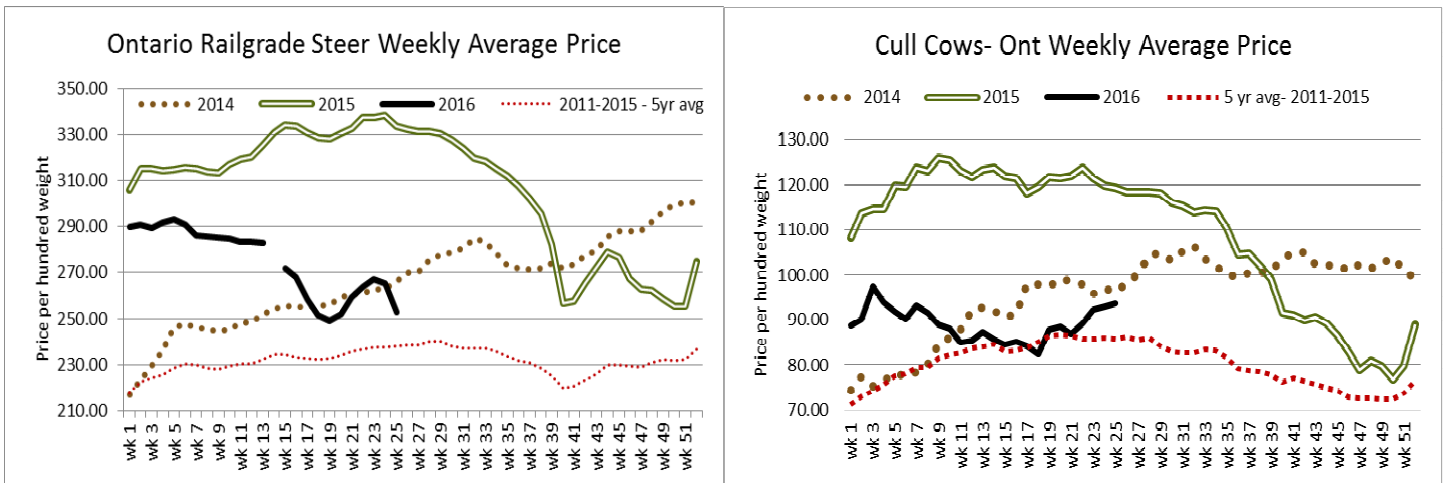
Daily Market Information Report - Friday, June 24, 2016

The following information is collected from various sources and disseminated by Beef Farmers of Ontario.

ONTARIO DIRECT TO PACKER RAILGRADE CATTLE TRADE

Prices are on a carcass weight basis before grade and weight discounts. (Prices for today regardless of delivery date).

A Grade Steers 246.00-255.00
A Grade Heifers 245.00-254.00



ONTARIO LIVE CATTLE TRADE

Today at **Brussels Livestock**: 900 stockers

Steers	Price Range	Average	Top	Heifers	Price Range	Average	Top
1000+	148.25-158.25	153.37	162.50	900+	145.50-156.25	150.42	158.75
900-999	152.00-163.00	157.52	170.00	800-899	152.00-167.75	162.42	179.50
800-899	172.00-184.00	176.88	184.00	700-799	164.00-168.50	165.66	178.00
700-799	177.50-192.00	185.75	200.00	600-699	167.00-181.00	176.14	192.00
600-699	197.00-236.00	220.33	236.00	500-599	161.00-212.00	187.22	235.00
500-599	192.00-228.00	213.27	250.00	400-499	190.00-240.00	213.18	240.00
400-499	217.00-230.00	221.33	237.00				
399-	225.00-295.00	271.67	295.00				

Calves and yearlings sold on a steady trade.

Ontario auction sales on **Thursday** saw weighted prices for:

	Volume	Price Range	Average	Top
Large & Medium Frame Fed Steers +1250 lbs	117	137.00-160.00	148.99	165.50
Large & Medium Frame Fed Heifers +1000 lbs	46	124.35-147.37	137.83	166.00
Fed steers, dairy and dairy cross	118	127.81-135.58	131.67	136.00
Fed heifers, dairy and dairy cross	32	108.25-127.00	117.46	131.00
Cows	564	79.58-106.79	91.40	136.00
Bulls (all weights)	21	110.07-130.89	120.05	150.00
Veal +600 lbs	240	103.86-134.63	117.82	245.00
Veal Calves 125 lbs & under	132	195.00-325.00	280.02	325.00

Stocker sale at: **Ontario Livestock Exchange, June 23, 2016 – 118** Stockers

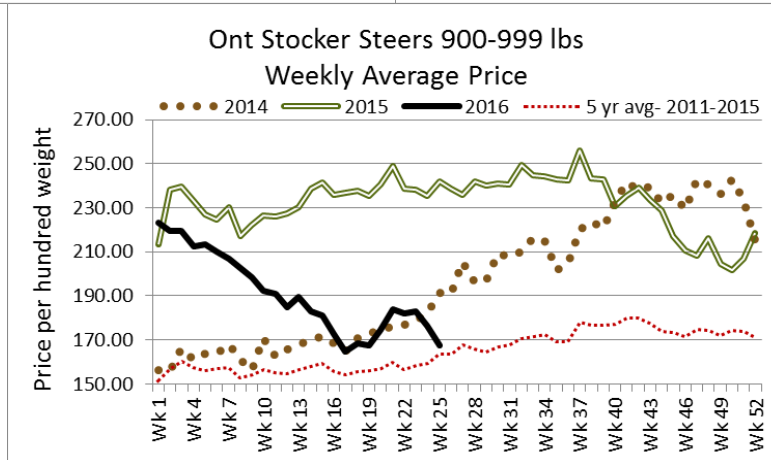
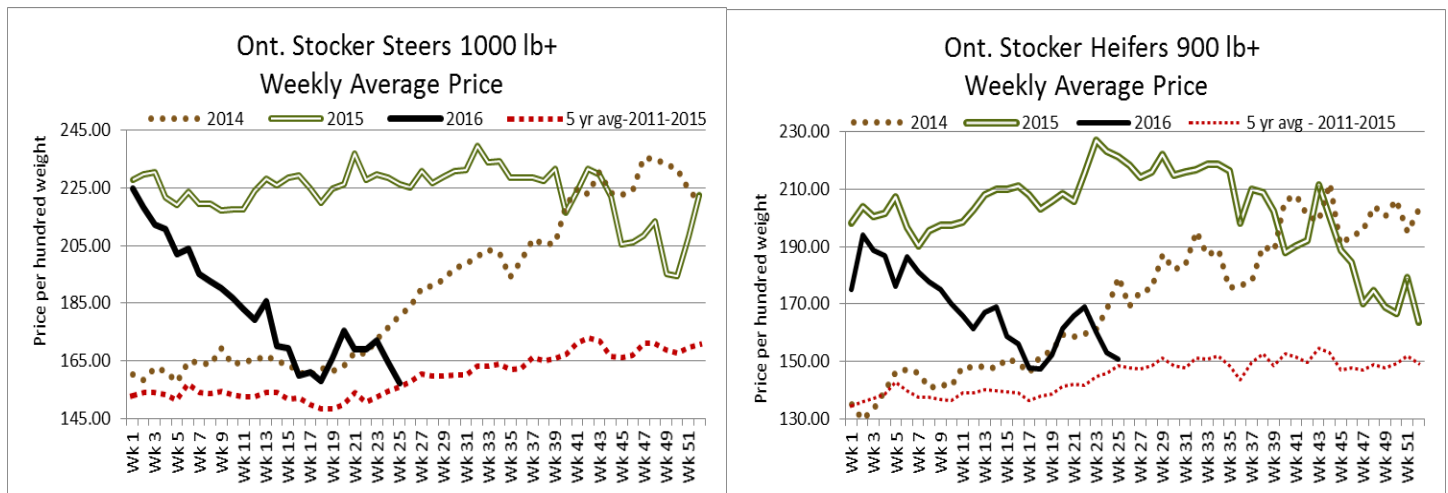
Steers	Price Range	Average	Top	Heifers	Price Range	Average	Top
900-999	126.00-146.50	138.00	146.50	600-699	122.50-182.50	157.00	182.50
800-899	120.00-151.50	140.29	151.50				

Stockers sold steady on a softer market.

Stocker sale at: **Ontario Stockyards Inc., June 23, 2016 – 391** stockers

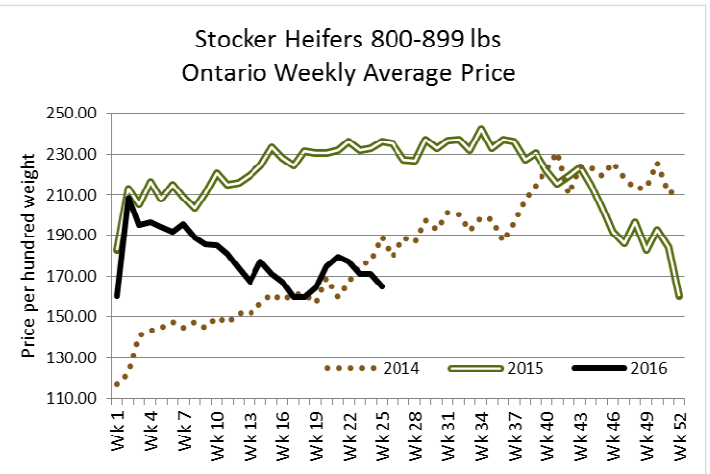
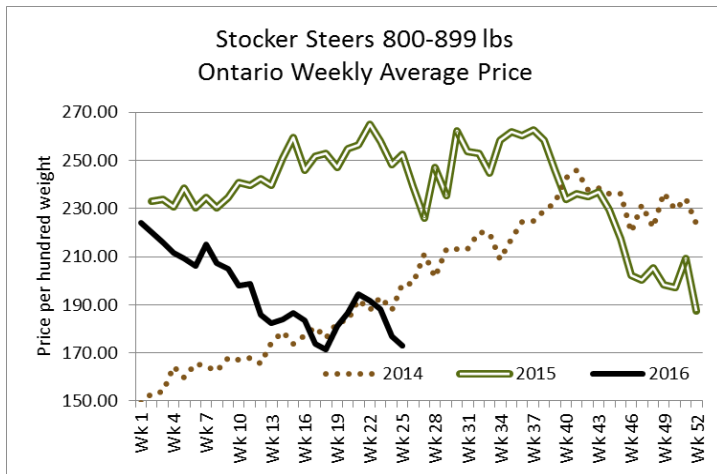
Steers	Price Range	Average	Top	Heifers	Price Range	Average	Top
1000+	108.50-156.50	133.66	203.92	900+	123.00-148.00	135.91	148.00
900-999	160.00-168.50	162.12	168.50	800-899	145.00-173.00	163.68	173.00
800-899	167.00-181.00	176.17	181.00	700-799	133.00-174.00	159.52	183.50
700-799	143.50-190.00	170.62	197.00	600-699	135.00-172.50	154.24	195.00
600-699	150.00-202.50	179.64	239.00	500-599	159.00-195.00	176.40	195.00
500-599	163.00-226.00	188.21	245.00	400-499	157.50-200.00	172.60	233.00
400-499	170.00-228.00	203.60	259.00	300-399	177.50-215.00	196.36	241.00
399-	210.00-241.00	227.22	241.00				

Replacement cattle sold actively with prices fully steady to last week's market.



Stocker sale at: **Ottawa Livestock Exchange, June 23, 2016 – 71** stockers

Steers	Price Range	Average	Top	Heifers	Price Range	Average	Top
600-699	119.00-216.00	165.57	216.00	400-499	147.00-199.00	161.50	19.00
500-599	172.00-219.00	201.38	219.00				



U.S. BOXED BEEF CUT-OUT VALUES (U.S. funds)

	Choice	Select
	600-900	600-900
Cutout Values (noon estimate):	214.00	198.37
Change (from yesterday's close):	-1.46	+0.04
Current Five Day Average:	218.42	198.78

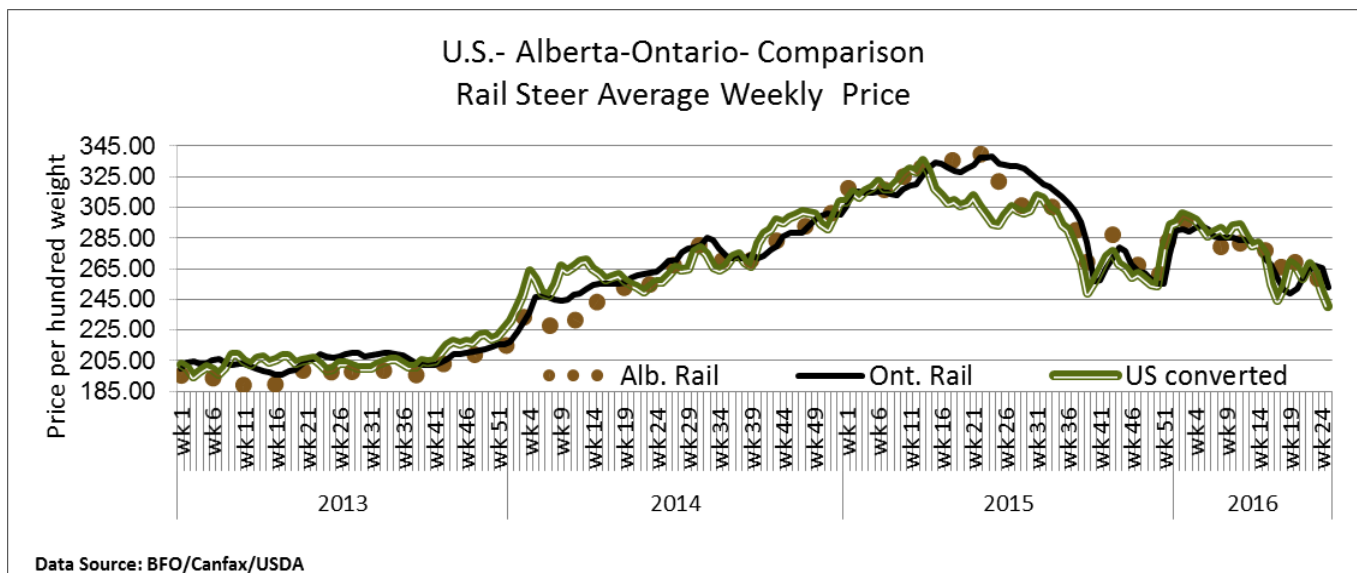
QUEBEC ELECTRONIC AUCTION MARKET (F.O.B. THE FEEDLOT)

	Price	Change from Last Week
Week Ending Thursday, June 23, 2016	260.25-263.00	-4.41

ALBERTA DIRECT TRADE

The Alberta direct trade was light this week with prices under pressure. Canfax's sale summary for the week lists both steers and heifers from \$234.25-\$238.50 dressed, with steers down \$16.90 from last week on average, while heifers had no sales last week to compare to.

Steers	Live	N/T	Flat rail	234.25-238.50
Heifers	Live	N/T	Flat rail	234.25-238.50



Data Source: BFO/Canfax/USDA

U.S. TRADE (U.S. funds)

The U.S. cash cattle trade on Thursday reported by the USDA Mandatory Report saw live sales range from \$115.00-\$120.00 averaging \$116.00 which is steady to the rest of the week. In the north dressed deals ranged from \$186.00-\$190.00 averaging \$3.00-\$4.00 stronger than Wednesday's trade but \$6.00-\$7.00 easier than last week. Today, most attention was focused on the futures markets as they opened under severe pressure following the news that the U.K voted to exit the European Union. Worldwide, most markets were under pressure due to uncertainty moving forward. The cattle futures did ease up some over the noon hour but as the day progressed the market saw the pressure return. This afternoon, after the Cattle On Feed Report was released some light trade started to develop in the north from \$188.00-\$189.00 which is steady to yesterday. Bids in the south are sitting at \$116.00 live but no sales are reported. Asking prices are sitting at \$118.00 live in the south and \$190.00-\$192.00 dressed in the north, with business expected to continue into late afternoon.

Choice and Select Steers and Heifers:	Live	115.00-120.00 for the week
	Rail	184.00-190.00 for the week

CHICAGO MERCANTILE EXCHANGE

Closing quotes on futures today were as follows:

Live Cattle		Feeder Cattle		Corn		Soybeans		Canadian \$	
\$/cwt US		\$/cwt US		\$/bu US		¢/bu			
Jun	114.70 -2.05	Aug	139.45 -2.92	Jul	3.844 -2.6	July	11.030 -21.4	Spot	77.08 -1.07
Aug	110.87 -2.97	Sep	138.27 -2.55	Sep	3.890 -3.4	Aug	11.014 -22.0	Sep	77.11 -1.03
Oct	110.87 -2.75	Oct	136.80 -2.35	Dec	3.942 -3.4	Sep	10.862 -22.6	Dec	77.12 -1.03
Dec	111.95 -2.45	Nov	134.20 -2.17	Mar	4.016 -3.4	Nov	10.784 -23.0	Mar	77.12 -1.05
Feb	111.87 -2.05	Jan	129.77 -2.00	May	4.056 -3.4	Jan	10.764 -22.4	Jun	77.12 -1.07
Apr	111.40 -1.75	Mar	127.20 -1.77	Jul	4.090 -3.0	Mar	10.480 -19.2	Sep	77.12 -1.10

Beef Farmers of Ontario, 130 Malcolm Road, Guelph, ON N1K 1B1 Phone: (519) 824-0334 Fax: (519) 824-1930 or email: markets@ontariobeef.com.