



## Daily Market Information Report - Friday, September 1, 2017

The following information is collected from various sources and disseminated by Beef Farmers of Ontario.

### ONTARIO DIRECT TO PACKER RAILGRADE CATTLE TRADE

Prices are on a carcass weight basis before grade and weight discounts. (Prices for today regardless of delivery date).

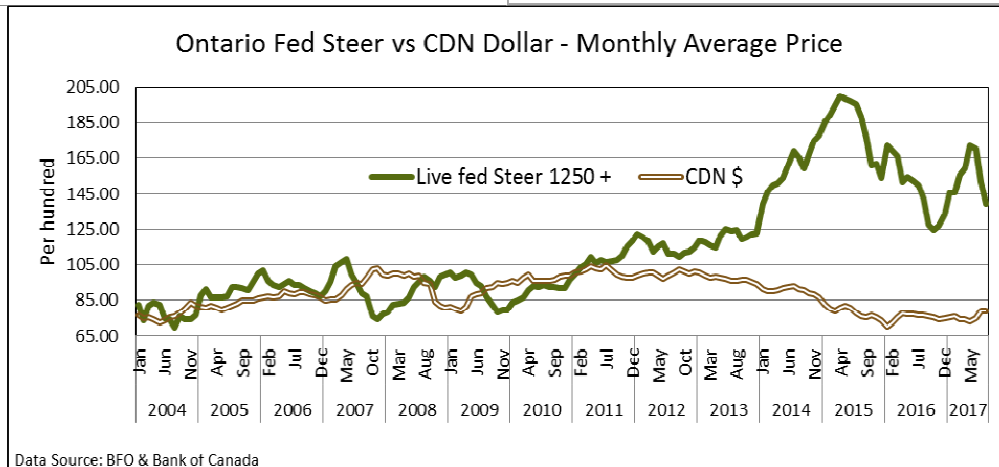
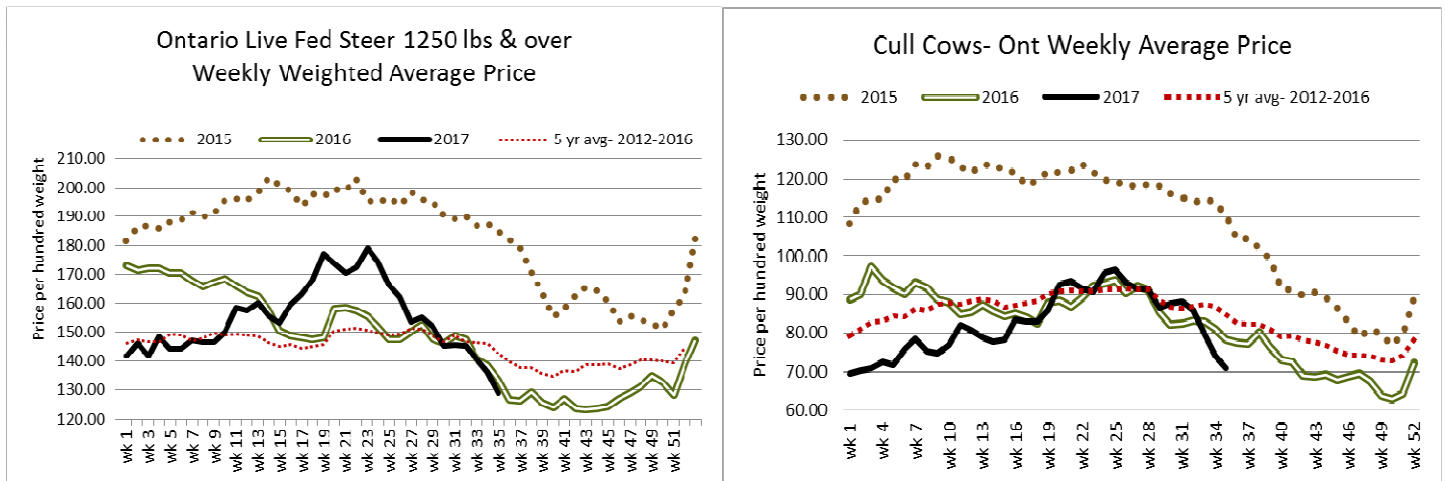
**A Grade Steers** Unestablished  
**A Grade Heifers** Unestablished

### ONTARIO LIVE CATTLE TRADE

The report from **Brussels Livestock: 750 head of cattle**

Steers	Price Range	Average	Top	Heifers	Price Range	Average	Top
1000+	149.25-168.00	159.86	186.00	900+	143.00-159.50	152.28	159.50
900-999	164.75-180.75	172.32	180.75	800-899	157.00-172.25	166.50	172.25
1800-899	172.00-186.25	180.32	186.25	700-799	180.50-181.50	181.00	181.50
700-799	141.00-175.00	161.14	191.00	600-699	160.00-200.50	181.54	200.50
600-699	187.00-228.00	203.67	228.00	500-599	177.00-192.00	184.08	192.00
500-599	187.00-225.00	210.85	243.00	400-499	179.00-199.00	191.88	217.00
400-499	217.00-260.00	233.80	325.00	300-399	190.00-260.00	227.56	260.00

Calves and yearlings both sold actively with choice cattle selling steady with second cut cattle selling on an easier trade.

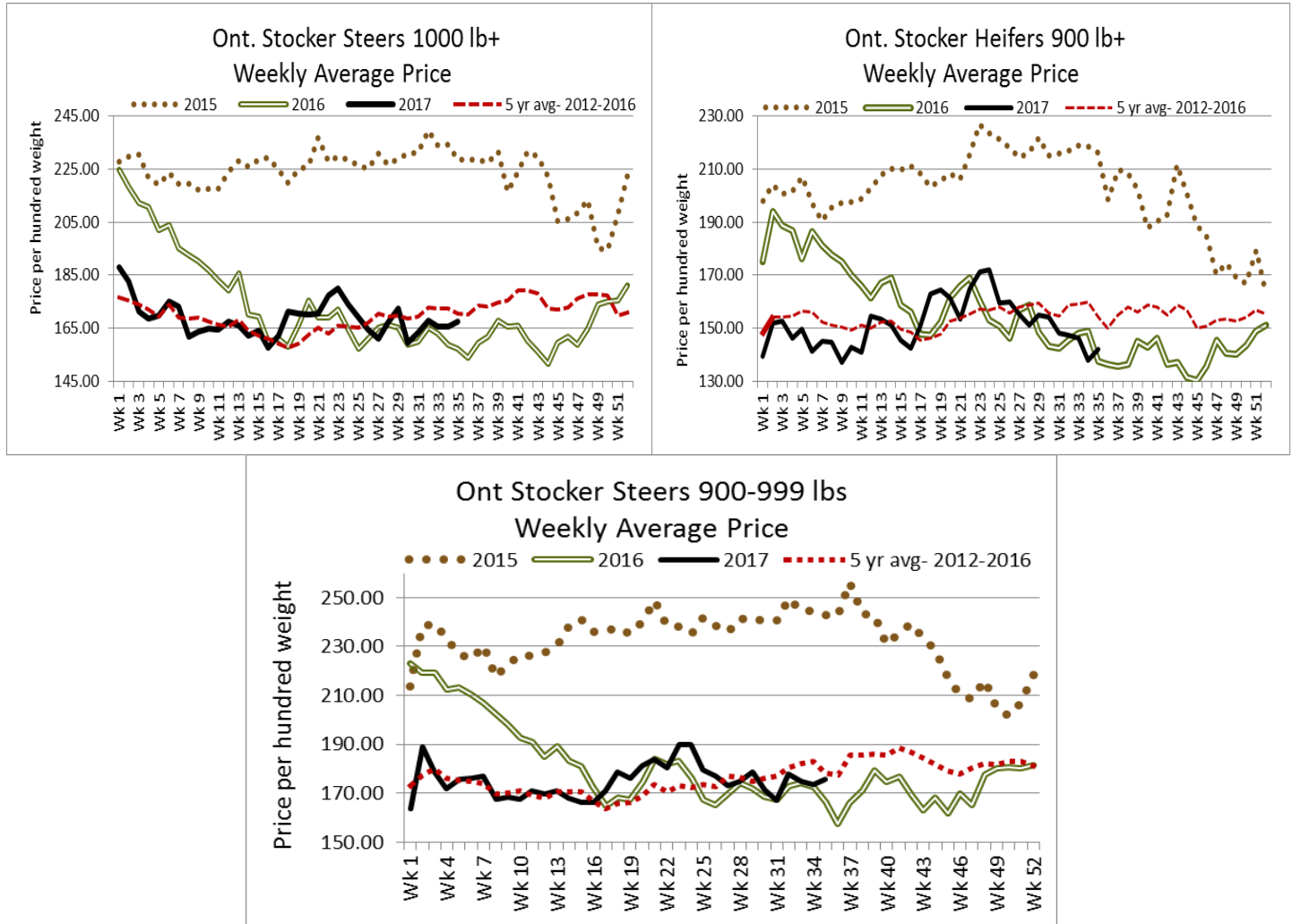


Data Source: BFO & Bank of Canada

In 2015 the live fed cattle market went from a weekly average of \$203.26 the week of June 4, 2015, down to \$155.37 the week ending October 8, 2015. This is a drop of \$47.89 or 23.6%, over an 18 week period. Since the week of June 8, 2017, when the live steer price topped out at \$179.00 on average, prices have declined to \$128.90 on average this week, that's \$50.10 cwt lower than June 8<sup>th</sup> or a decline of 28% in a 12 week period.

Ontario auction sales on **Thursday** saw weighted prices for:

	Volume	Price Range	Average	Top
Large & Medium Frame Fed Steers +1250 lbs	59	117.76-139.32	128.89	140.00
Large & Medium Frame Fed Heifers +1000 lbs	16	79.13-124.38	105.57	141.00
Fed steers, dairy and dairy cross	40	90.50-109.00	100.64	114.00
Cows	462	58.33-75.57	67.60	107.00
Bulls under 1600 lbs	10	78.40-105.20	89.18	106.00
Bulls over 1600 lbs	30	72.33-93.92	82.20	115.00
Veal +600 lbs	184	104.26-134.58	122.66	176.00
Veal Calves 125 lbs & under	133	50.00-132.00	96.18	185.00



Stocker sale at: **Ontario Livestock Exchange, August 31, 2017 – 162 Stockers**

Steers	Price Range	Average	Top	Heifers	Price Range	Average	Top
<b>1000+</b>	143.00-160.00	149.09	166.00	<b>900</b>	131.00-147.00	143.83	147.00
<b>900-999</b>	127.50-156.00	148.05	173.00	<b>800-899</b>	138.00-151.00	142.92	151.00
<b>800-899</b>	135.00-157.00	142.64	170.00	<b>700-799</b>	137.00-156.50	150.75	156.50
				<b>600-699</b>	146.00-167.00	162.50	167.00

Feeder cattle sold actively at steady to selectively stronger prices.

Stocker sale at: **Ontario Stockyards Inc. August 31, 2017 – 181** Stockers

<b>Steers</b>	<b>Price Range</b>	<b>Average</b>	<b>Top</b>	<b>Heifers</b>	<b>Price Range</b>	<b>Average</b>	<b>Top</b>
<b>900-999</b>	137.00-152.00	142.19	16.00	<b>900+</b>	127.00-137.50	134.22	152.00
<b>800-899</b>	152.00-177.00	161.53	177.00	<b>800-899</b>	138.00-159.00	154.28	159.00
<b>700-799</b>	152.50-170.00	159.76	190.00	<b>700-799</b>	142.00-156.00	148.54	170.00
<b>600-699</b>	170.00-202.00	188.14	202.00	<b>600-699</b>	145.00-171.00	158.68	172.00
<b>500-599</b>	122.50-212.00	177.89	212.00	<b>500-599</b>	166.00-175.00	167.87	175.00
<b>400-499</b>	162.00-235.00	212.29	235.00	<b>400-499</b>	142.00-146.00	143.99	146.00
<b>399-</b>	170.00-240.00	215.95	240.00				

A medium quality offering of replacement cattle traded at about steady prices.

Stocker sale at: **Ottawa Livestock Exchange, August 24, 2017 – 85** Stockers

<b>Steers</b>	<b>Price Range</b>	<b>Average</b>	<b>Top</b>	<b>Heifers</b>	<b>Price Range</b>	<b>Average</b>	<b>Top</b>
<b>700-799</b>	177.00-180.00	177.86	180.00	<b>500-599</b>	164.00-190.00	177.29	195.00
<b>600-699</b>	120.00-212.00	171.76	225.00	<b>400-499</b>	122.00-205.00	163.00	205.00
<b>500-599</b>	165.00-230.00	191.11	240.00				
<b>400-499</b>	234.00-244.00	238.55	244.00				
<b>399-</b>	232.00-262.00	248.00	262.00				

### **CANADIAN BOXED BEEF CUT-OUT VALUES**

<b>Week Ending</b>	<b>AAA</b>	<b>AA</b>
August 11, 2017	2.5984	2.4615
August 4, 2017	2.5940	2.4798
July 28, 2017	2.5972	2.4196

### **U.S. BOXED BEEF CUT-OUT VALUES (U.S. funds)**

	<b>Choice 600-900</b>	<b>Select 600-900</b>
<b>Cutout Values</b> (noon estimate):	191.64	190.03
<b>Change</b> (from yesterday's close):	-0.34	-0.31
<b>Current Five Day Average:</b>	191.64	190.03

### **QUEBEC ELECTRONIC AUCTION MARKET (F.O.B. THE FEEDLOT)**

	<b>Price</b>	<b>Change from Last Week</b>
For the week ending August 24, 2017	225.00-228.25	-4.87

### **ALBERTA DIRECT TRADE**

Alberta direct trade was light this week. Canfax reported prices for steers at \$136.25-\$138.00 live, with no live sales last week to compare to. On the rail steers were reported at \$225.00-\$232.50 averaging \$230.00 down \$0.88 from last week on average. Canfax notes: "With fed cattle prices continuing to work lower feeding margins have narrowed considerably. Many cattle being sold now are at or below breakeven levels."

<b>Steers</b>	Live	136.25-138.00	Flat rail	225.00-252.50
<b>Heifers</b>	Live	N/T	Flat rail	N/T

### **U.S. TRADE (U.S. funds)**

U.S. cash cattle trade remained untested today following light to moderate trade on Wednesday and Thursday. Sales this week ranged from \$102.50-\$105.00 live averaging \$104.67 for the week, down \$2.20 from last week. On the rail prices ranged from \$164.00-\$166.00 dressed, averaging \$165.50 down \$4.00 from last week. Today the market was quiet with business for the week completed.

Choice and Select Steers and Heifers:	Live	102.50-105.00
	Rail	164.00-166.00

## CHICAGO MERCANTILE EXCHANGE

Closing quotes on futures today were as follows:

Live Cattle			Feeder Cattle			Corn		Soybeans		Canadian \$				
\$/cwt US			\$/cwt US			\$/bu US	¢/bu	\$/bu US	¢/bu					
<b>Oct</b>	105.15	-0.25	<b>Sep</b>	142.72	+0.15	<b>Sep</b>	3.400	-2.2	<b>Sep</b>	9.420	+5.6	<b>Spot</b>	80.71	+0.69
<b>Dec</b>	109.47	+0.37	<b>Oct</b>	143.55	+0.25	<b>Dec</b>	3.552	-2.4	<b>Nov</b>	9.494	-4.2	<b>Sep</b>	80.72	+0.69
<b>Feb</b>	112.92	+0.57	<b>Nov</b>	143.95	+0.27	<b>Mar</b>	3.676	-2.6	<b>Jan</b>	9.592	+4.4	<b>Oct</b>	80.75	+0.69
<b>Apr</b>	114.07	+0.72	<b>Jan</b>	141.35	+0.85	<b>May</b>	3.752	-2.4	<b>Mar</b>	9.684	+4.2	<b>Dec</b>	80.77	+0.68
<b>Jun</b>	108.12	+0.60	<b>Mar</b>	139.27	+0.85	<b>Jul</b>	3.816	-2.2	<b>May</b>	9.774	+4.6	<b>Mar</b>	80.78	+0.68
<b>Aug</b>	106.47	+0.47	<b>Apr</b>	139.82	+0.77	<b>Sep</b>	3.880	-2.0	<b>Jul</b>	9.850	+5.0	<b>Jun</b>	80.80	+0.67

Beef Farmers of Ontario, 130 Malcolm Road, Guelph, ON N1K 1B1 Phone: (519) 824-0334 Fax: (519) 824-1930 or email: [markets@ontariobeef.com](mailto:markets@ontariobeef.com)

## ONTARIO STOCKER & FEEDER TRADE SPECIAL FALL SALES

1-Sep	7:00 pm	Cargill Auction Market	Charolais & Exotic cross- steers and heifers
2-Sep	1:00 pm	Maple Hill Auctions Ltd	Ontario Autumn Angus Classic
<b>postponed</b>	10:00 am	Warton- Grey Bruce Livestock Co-op	Stocker sale has been moved to October 26 in conjunction with the scheduled Calf Sale.
14-Sep	11:00 am	Ontario Stockyards Inc	Special fall yearling sale- with reg sale.
15-Sep	11:00 am	Community Livestock Exchange	Quinte Cattlemen's fall stocker sale
19-Sep	10:00 am	Thessalon- Algoma Livestock Co-op	Yearling sale
23-Sep	11:00 am	Denfield Livestock Exchange	Vaccinated stockers, bred cows & cow/calf pairs