



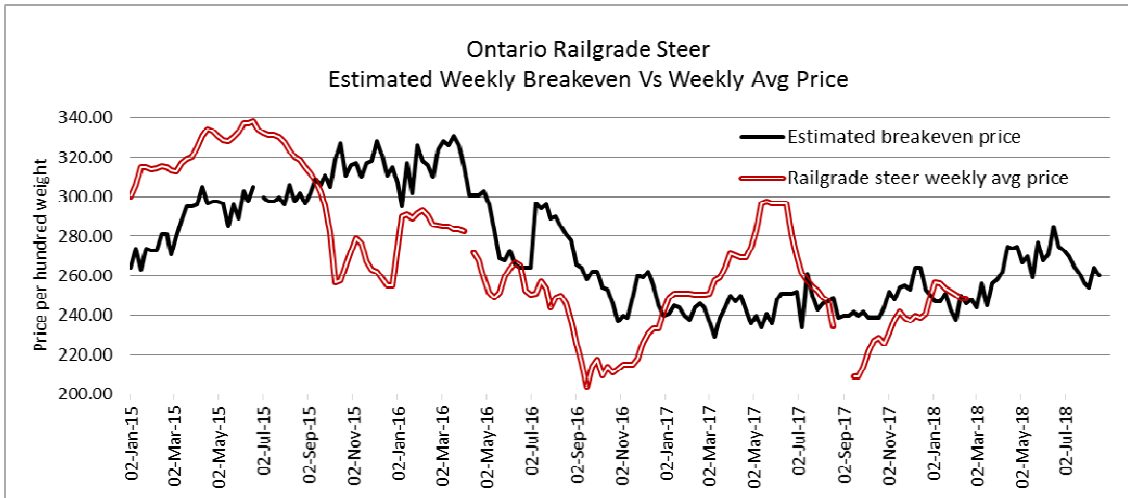
## Daily Market Information Report - Friday, February 16, 2018

The following information is collected from various sources and disseminated by Beef Farmers of Ontario.

### ONTARIO DIRECT TO PACKER RAILGRADE CATTLE TRADE

Prices are on a carcass weight basis before grade and weight discounts. (Prices for today regardless of delivery date).

**A Grade Steers** 247.00-250.00  
**A Grade Heifers** 246.00-249.00



The information provided on this report is based on weighted averages for actual data collected. Input costs are a guideline only and will vary from producer to producer. BFO does not take any responsibility and accepts no legal liability arising from or connected to damages or losses experienced by producers when using this information. This is to be used at your own risk.

### ONTARIO LIVE CATTLE TRADE

Today at **Brussels Livestock**: 561 stockers

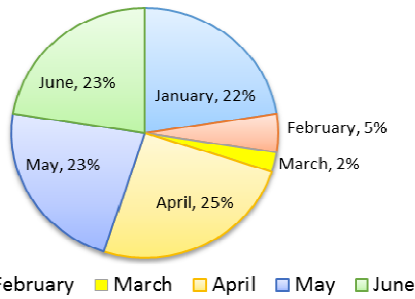
Steers	Price Range	Average	Top	Heifers	Price Range	Average	Top
1000+	155.00-184.00	174.35	184.00	900+	155.00-168.00	162.69	168.00
900-999	166.00-188.00	178.60	193.00	800-899	155.00-179.50	171.32	180.00
800-899	188.00-198.00	191.50	198.00	700-799	145.00-181.00	169.82	181.00
700-799	190.00-200.00	192.74	210.00	600-699	157.00-185.00	177.60	185.00
600-699	196.00-228.00	214.36	228.00	500-599	155.00-203.00	185.00	203.00
500-599	220.00-248.00	243.84	248.00	400-499	167.00-207.00	185.11	207.00
400-499	195.00-245.00	215.07	245.00				
399-	120.00-185.00	152.50	185.00				

Calves sold steady with yearlings selling on a strong active trade.

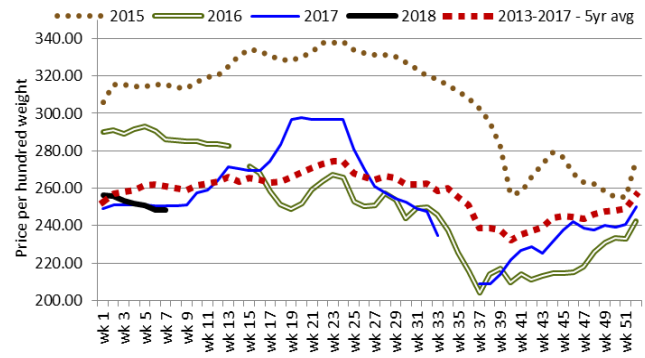
Ontario auction sales on **Thursday** saw weighted prices for:

	Volume	Price Range	Average	Top
Large & Medium Frame Fed Steers +1250 lbs	53	140.00-157.00	148.50	164.00
Large & Medium Frame Fed Heifers +1000 lbs	54	115.00-151.50	140.72	164.00
Fed steers, dairy and dairy cross	20	90.70-107.33	100.35	134.00
Cows	656	54.47-71.73	63.31	112.00
Bulls under 1600 lbs	7	73.86-100.36	86.07	110.00
Bulls over 1600 lbs	13	77.69-96.46	87.54	105.00
Veal +600 lbs	130	114.78-150.46	135.58	183.00
Veal Calves 125 lbs & under	107	42.00-130.00	92.89	180.00

Ontario Live Fed Steer Monthly Average Prices  
Spring High - 40 Years (1978-2017)



Ontario Railgrade Steer Weekly Average Price



Stocker sale at: **Ontario Livestock Exchange, February 15, 2018– 300** Stockers

Steers	Price Range	Average	Top	Heifers	Price Range	Average	Top
1000+	132.00-171.00	148.40	177.50	600-699	119.00-160.00	155.15	160.00
900-999	102.50-154.00	146.85	154.00	500-599	160.00-184.00	169.42	190.00
800-899	179.00-210.00	192.33	210.00	300-399	187.50-210.00	195.83	210.00
600-699	154.00-205.00	169.71	210.00				
500-599	140.00-182.50	163.92	242.50				
400-499	156.00-230.00	196.06	230.00				

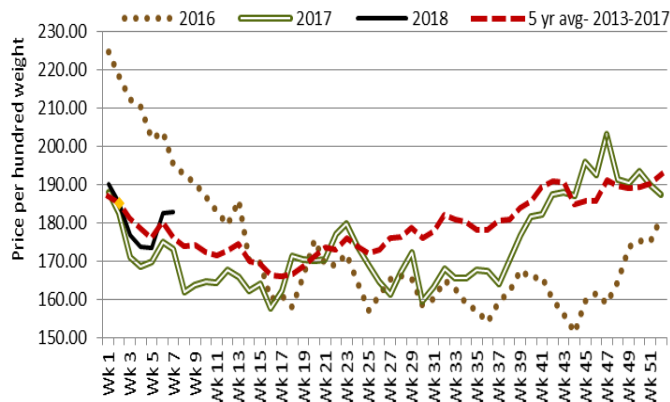
Stockers sold actively at steady prices, with light calves bringing a premium.

Stocker sale at: **Ontario Stockyards Inc. - February 15, 2018– 1,073** Stockers

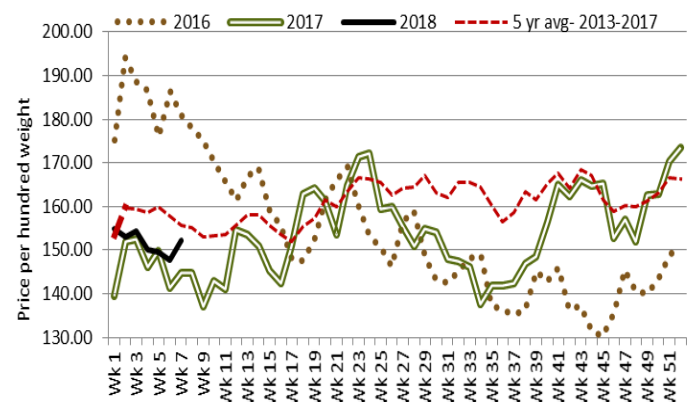
Steers	Price Range	Average	Top	Heifers	Price Range	Average	Top
1000+	172.00-178.00	177.49	178.00	900+	100.00-154.00	131.48	154.00
900-999	173.00-187.00	177.86	187.00	800-899	120.00-135.00	129.29	135.00
800-899	164.00-189.50	179.66	189.50	700-799	150.00-184.00	169.15	189.50
700-799	183.00-218.00	199.98	218.00	600-699	168.00-200.00	185.54	206.00
600-699	211.00-237.00	226.98	238.00	500-599	185.00-219.50	202.71	219.50
500-599	220.00-254.00	242.01	269.00	400-499	167.50-214.00	192.46	214.00
400-499	225.00-263.50	249.87	263.50	300-399	175.00-205.00	193.58	227.50
399-	235.00-252.50	245.26	252.50				

Replacement cattle sold actively with prices steady.

Ont. Stocker Steers 1000 lb+  
Weekly Average Price

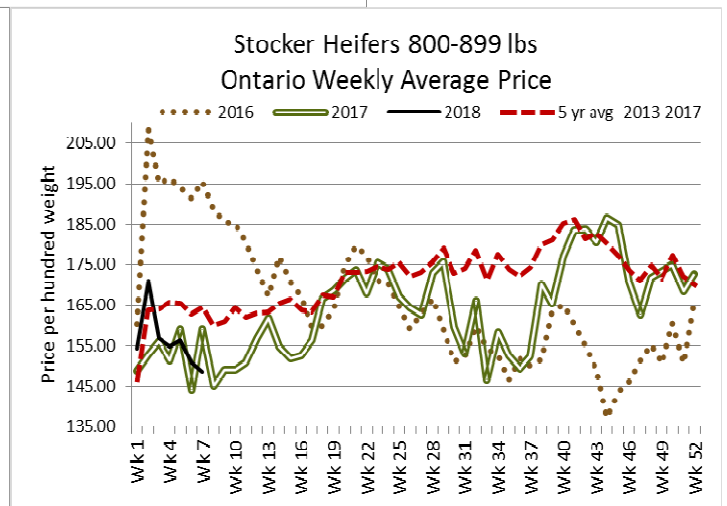
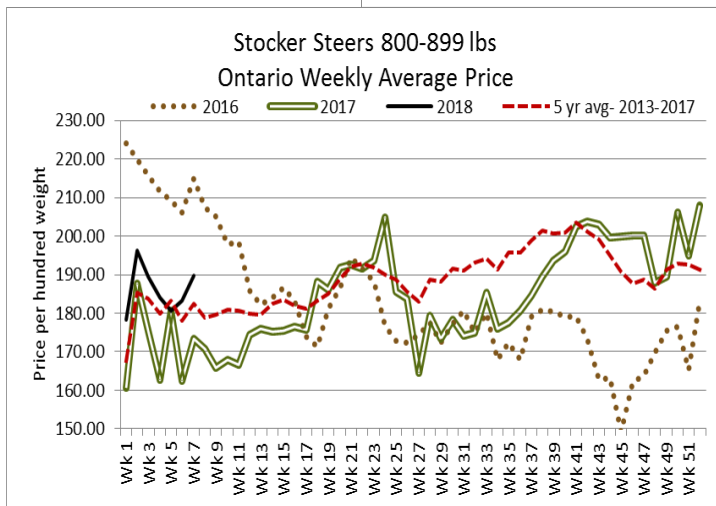
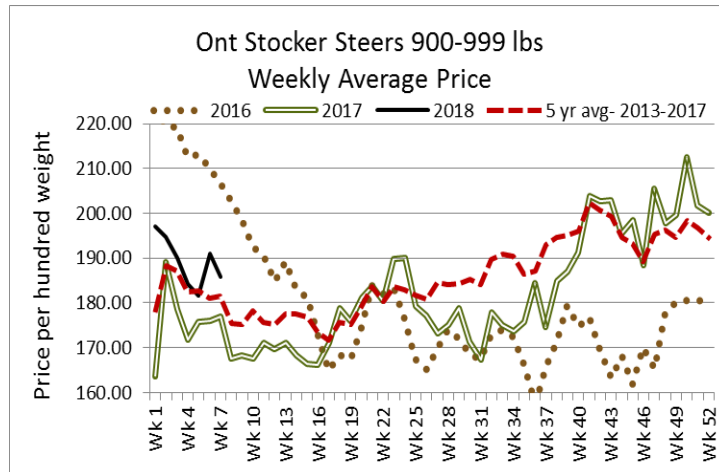


Ont. Stocker Heifers 900 lb+  
Weekly Average Price



Stocker sale at: **Ottawa Livestock Exchange, February 15, 2018– 105 Stockers**

<b>Steers</b>	<b>Price Range</b>	<b>Average</b>	<b>Top</b>	<b>Heifers</b>	<b>Price Range</b>	<b>Average</b>	<b>Top</b>
<b>600-699</b>	142.00-170.00	158.00	188.00	<b>600-699</b>	124.00-154.00	141.56	154.00
<b>500-599</b>	140.00-210.00	174.85	210.00	<b>500-599</b>	118.00-160.00	139.95	190.00
<b>400-499</b>	122.00-192.00	157.33	192.00				
<b>399-</b>	60.00-257.00	142.33	257.00				



**U.S. BOXED BEEF CUT-OUT VALUES (U.S. funds)**

	<b>Choice 600-900</b>	<b>Select 600-900</b>
<b>Cutout Values (noon estimate):</b>	209.20	205.16
<b>Change (from yesterday's close):</b>	+0.16	+0.02
<b>Current Five Day Average:</b>	207.80	203.70

**QUEBEC ELECTRONIC AUCTION MARKET (F.O.B. THE FEEDLOT)**

	<b>Price</b>	<b>Change from Last Week</b>
For the week ending February 15, 2018	246.00	+0.75

**ALBERTA DIRECT TRADE**

Alberta direct trade was light. Canfax noted live steers and heifers at \$165.00, up \$3.00 on average from last week for the steers, while there were no heifer sales last week to compare to. On the rail prices ranged from \$273.00-\$273.75 dressed, FOB, with steers averaging \$0.27 lower than last week on average. The overall average was up \$1.00 reports Canfax, noting "Some of this week's showlist offering will be carried over and can easily remain on feed three to four more weeks."

<b>Steers</b>	Live	165.00	Rail	273.00-237.75 FOB
<b>Heifers</b>	Live	165.00	Rail	273.00 FOB

### U.S. TRADE (U.S. funds)

U.S. cash cattle trade is seeing light trade develop at time of reporting with sales in the south at \$130.00 live up \$4.00 from last week's weighted average prices. A few sales in Nebraska have also surfaced at \$205.00 dressed, up \$5.00 from last week on average. Trade volumes should increase as the afternoon progresses with bids sitting at \$130.00 live and \$204.00-\$205.00 dressed, while asking prices are \$130.00-\$132.00 live and \$205.00 dressed.

Choice and Select Steers and Heifers:	Live	130.00
	Rail	205.00

### CHICAGO MERCANTILE EXCHANGE

Closing quotes on futures today were as follows:

Live Cattle			Feeder Cattle			Corn			Soybeans			Canadian \$		
Feb	130.10	+0.82	Mar	149.72	-0.10	Mar	3.674	-0.2	Mar	10.214	-2.6	Spot	79.66	-0.39
Apr	127.65	+0.40	Apr	152.40	+0.10	May	3.750	-0.4	May	10.324	-2.4	Mar	79.70	-0.39
Jun	118.67	+0.07	May	152.82	-0.02	Jul	3.826	-0.2	Jul	10.422	-2.4	Jun	79.82	-0.39
Aug	115.62	+0.22	Aug	155.35	+0.00	Sep	3.894	-0.2	Aug	10.432	-2.4	Sep	79.93	-0.38
Oct	117.12	+0.02	Sep	155.10	+0.15	Dec	3.970	-0.4	Sep	10.306	-2.2	Dec	80.03	-0.38
Dec	118.85	+0.00	Oct	154.95	+0.30	Mar	4.046	-0.4	Nov	10.220	-1.6	Mar	80.13	-0.38

Beef Farmers of Ontario, 130 Malcolm Road, Guelph, ON N1K 1B1 Phone: (519) 824-0334 Fax: (519) 824-9161 or email: [markets@ontariobeef.com](mailto:markets@ontariobeef.com)

### ONTARIO STOCKER & FEEDER TRADE UPCOMING SPECIAL SALES

17-Feb		Kawartha Lakes Community Sale Barn	Bred Cows after regular sale
28-Feb	2:00 pm	Vankleek Hill Livestock Exchange	Stocker Sale
06-Mar	11:00 am	Ontario Stockyards Inc	Special Spring All Vaccinated Stocker Sale
09-Mar	5:00 pm	Keady Livestock Market	Bred Cow & Heifer Sale
16-Mar	11:00 am	Community Livestock Exchange	Quinte Cattlemen's Stocker Sale
17-Mar	2:00 pm	Maple Hill Auctions Ltd	Rollin Acres/Patton/whiskey Hollow Charolais Bull Sale
24-Mar	11:00 am	Denfield Livestock Exchange	Stocker and Bred Cow Sale