



## Daily Market Information Report – Friday April 16, 2021

The following information is collected from various sources and disseminated by Beef Farmers of Ontario.

### ONTARIO DIRECT TO PACKER RAILGRADE CATTLE TRADE

Prices are on a carcass weight basis before grade and weight discounts.

<b>A Grade Steers</b>	245.00
<b>A Grade Heifers</b>	244.00-245.00

The cattle sold this week were for delivery the weeks of April 26<sup>th</sup> to May 3<sup>rd</sup>.

### ONTARIO LIVE CATTLE TRADE

Today at **Brussels Livestock – 1,800** stockers- sale in progress. *Final results will be posted on Monday's Report*

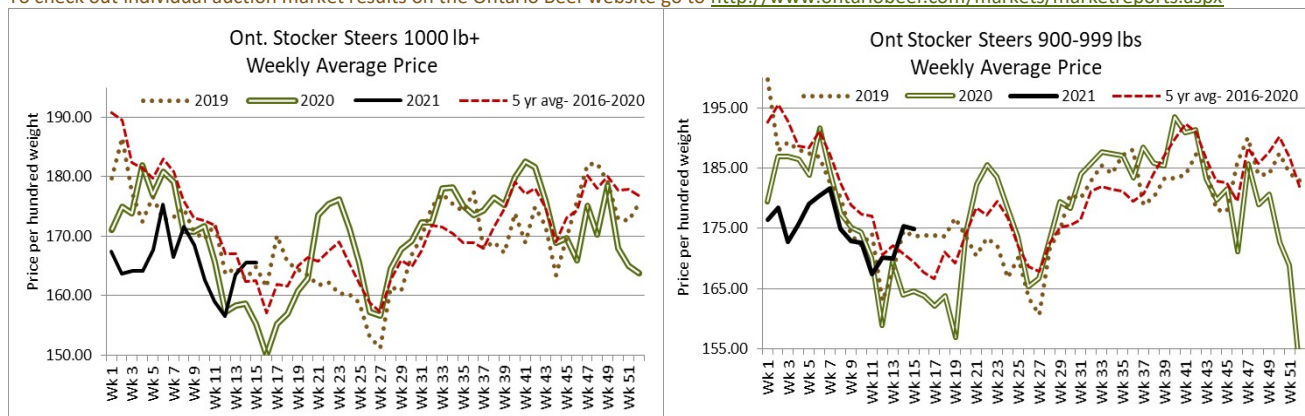
Steers	Price Range	Average	Top	Heifers	Price Range	Average	Top
900-999	167.50-186.50	175.03	186.50	900+	114.00-153.50	140.03	153.50
800-899	178.00-206.00	191.73	206.00	800-899	117.00-165.00	146.17	165.00
700-799	185.00-220.25	210.02	220.25	700-799	158.00-191.00	174.42	191.00
600-699	206.00-235.75	222.81	235.75	600-699	165.00-192.75	183.00	210.00
500-599	190.00-253.00	229.20	253.00	500-599	174.00-214.00	194.00	220.00
400-499	235.00-268.00	252.92	268.00	400-499	165.00-227.00	205.12	227.00
399-	170.00-230.00	210.00	230.00	300-399	131.00	131.00	175.00

Calves are selling actively at steady prices. Grass cattle are selling on a strong active trade. Yearlings had not started to sell at time of reporting.

Ontario auction sales on **Thursday** saw weighted prices for:

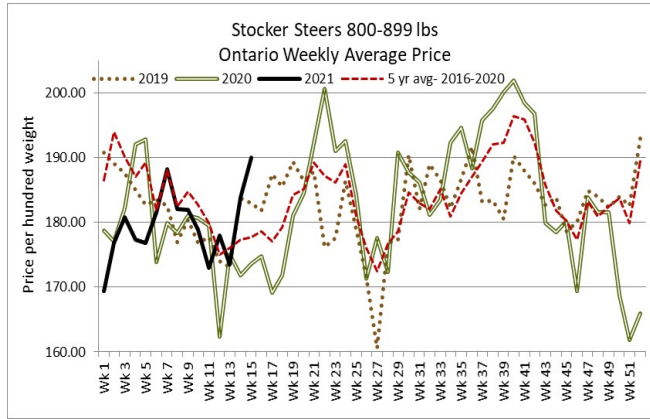
	Volume	Price Range	Average	Top
<b>Large &amp; Medium Frame Fed Steers 1250 lbs +</b>	73	130.00-151.25	145.69	155.00
<b>Large &amp; Medium Frame Fed Heifers 1000 lbs +</b>	54	130.00-146.50	140.26	163.50
<b>Fed Steers, Dairy &amp; Dairy Cross</b>	53	105.00-120.00	113.84	126.00
<b>Cows</b>	666	62.81-84.02	72.55	118.00
<b>Bulls – all weights</b>	20	79.75-92.95	85.30	125.00
<b>Veal over 600 lbs</b>	151	108.16-129.63	119.02	174.00

To check out individual auction market results on the Ontario Beef website go to <http://www.ontariobeef.com/markets/marketreports.aspx>



Stocker sale at: **Ottawa Livestock Exchange: April 15, 2021– 115** stockers

Steers	Price Range	Average	Top	Heifers	Price Range	Average	Top
700-799	118.00-194.00	162.21	216.00	600-699	110.00-180.00	150.50	180.00
600-699	110.00-232.00	202.89	232.00	500-599	122.00-178.00	142.44	208.00
500-599	227.00-238.00	233.08	238.00	400-499	100.00-150.00	131.00	216.00
400-499	150.00-238.00	196.00	238.00	300-399	132.00-216.00	152.00	216.00



Stocker sale at **Ontario Livestock Exchange: April 15, 2021 – 365 Stockers**

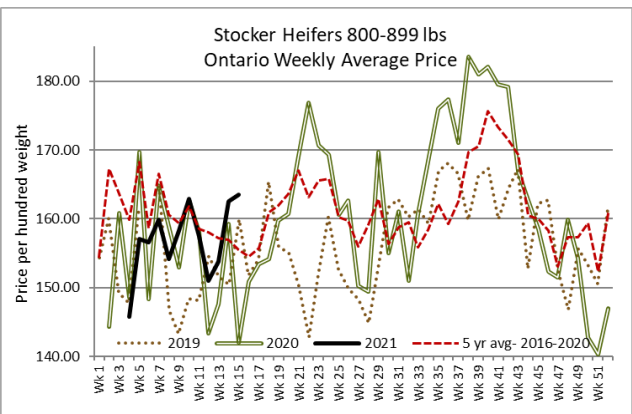
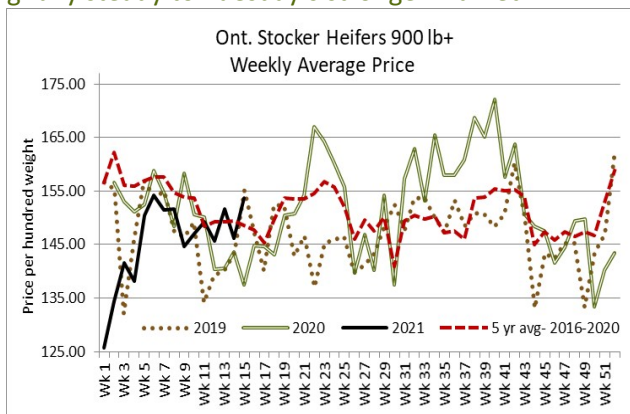
Steers	Price Range	Average	Top	Heifers	Price Range	Average	Top
100+	120.00-154.00	138.85	166.00	900+	102.50-132.50	117.06	137.50
900-999	162.00-177.50	171.08	177.50	800-899	130.00-157.50	147.06	165.00
800-899	150.00-191.00	170.24	191.00	700-799	135.00-175.00	158.21	175.00
700-799	167.50-192.50	182.86	192.50	600-699	132.50-203.00	163.19	203.00
600-699	140.00-225.00	194.44	230.00	500-599	170.00-200.00	185.33	200.00
500-599	55.00-225.00	163.55	240.00	400-499	175.00-210.00	188.00	210.00
400-499	157.50-237.50	193.75	237.50				
399-	172.50-265.00	214.17	265.00				

Stockers continue to trade strong to higher.

Stocker sale at: **Ontario Stockyards Inc: April 15, 2021– 626 stockers**

Steers	Price Range	Average	Top	Heifers	Price Range	Average	Top
1000+	118.00-164.00	146.25	164.00	800-899	110.00-178.50	167.73	178.50
900-999	86.00-180.00	152.57	180.00	700-799	159.00-183.50	177.49	183.50
800-899	186.00-209.00	201.16	209.00	600-699	162.00-198.00	1873.81	218.00
700-799	188.00-220.00	207.99	220.00	500-599	184.00-241.00	211.09	241.00
600-699	201.50-237.75	223.83	247.00	400-499	195.00-232.00	214.01	238.00
500-599	219.00-258.00	240.41	267.50	300-399	185.00-270.00	227.43	295.00
400-499	234.00-276.00	262.52	281.00				
399-	170.00-250.00	220.75	260.00				

Leeds & Grenville Counties Special Spring Stocker Sale included in this sale- With quality considered, stockers are trading fully steady to Tuesday's stronger market.



### U.S. BOXED BEEF CUT-OUT VALUES (U.S. funds)

	Choice 600-900	Select 600-900
Cutout Values (noon estimate):	276.94	269.13
Change (from yesterday's close):	+0.32	+0.70
Current Five Day Average:	272.65	266.50

