



Daily Market Information Report – Friday July 8, 2022

The following information is collected from various sources and disseminated by Beef Farmers of Ontario.

ONTARIO DIRECT TO PACKER RAILGRADE CATTLE TRADE

Prices are on a carcass weight basis before grade and weight discounts,

A Grade Steers Few this morning at \$315.00. One packer not bidding this afternoon.

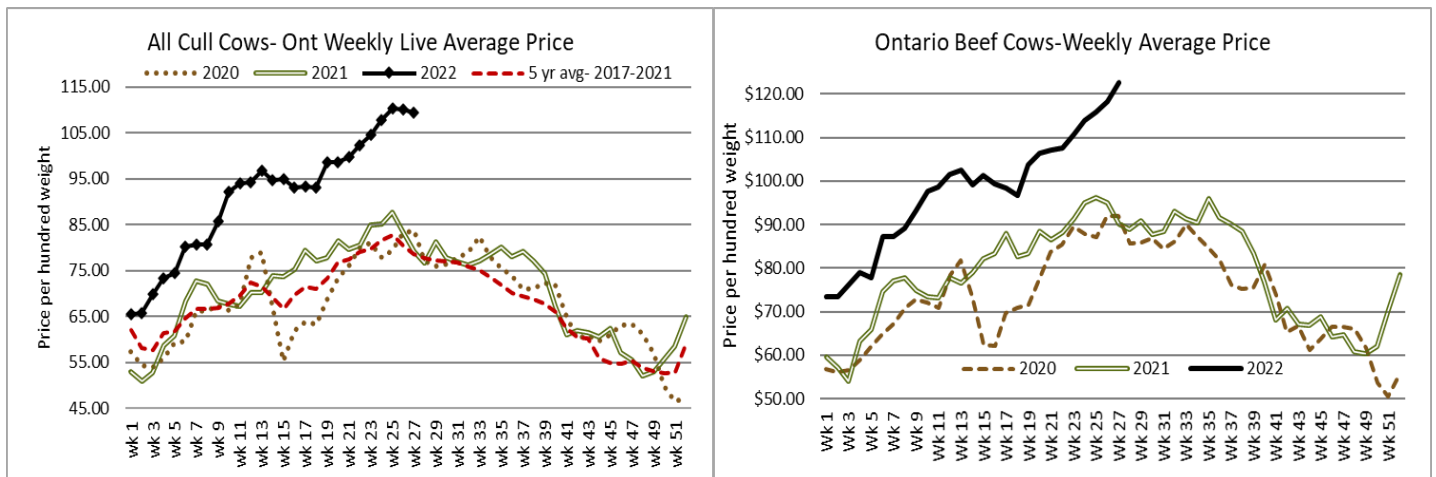
A Grade Heifers No new trade reported. One packer not bidding this afternoon.

The Ontario railgrade market this week saw a full trading range from \$315.00-\$320.00 dressed for steers and \$314.00-\$317.00 for heifers. Early week, cattle selling for delivery the weeks of July 18th and 25th were bought at \$318.00-\$320.00 dressed for steers and \$317.00 for heifers. As the week progressed, cattle sold for the week of August 1st delivery were at \$315.00 dressed for steers and \$314.00 for heifers. Overall average prices were down \$1.25 from last week but \$47.75 stronger than year ago prices, which were extremely limited.

Today at **Brussels Livestock – 1,100** stockers – Sale is still in progress.

Steers	Price Range	Average	Top	Heifers	Price Range	Average	Top
1000+	183.50-205.00	193.82	205.00	900+	166.50-186.50	176.16	186.50
900-999	187.00-210.50	201.14	210.50	800-899	168.00-191.50	183.45	191.50
800-899	195.00-215.50	203.96	225.00	700-799	152.50-194.50	174.32	198.50
700-799	174.00-237.50	203.15	245.00	600-699	158.00-220.00	188.23	220.00
600-699	267.50-282.00	275.25	282.00	500-599	165.00-200.00	184.65	200.00
500-599	230.00-283.00	261.45	285.00	400-499	120.00-170.00	152.50	170.00
400-499	225.00-257.00	241.39	262.50				
399-	252.50-305.00	278.75	305.00				

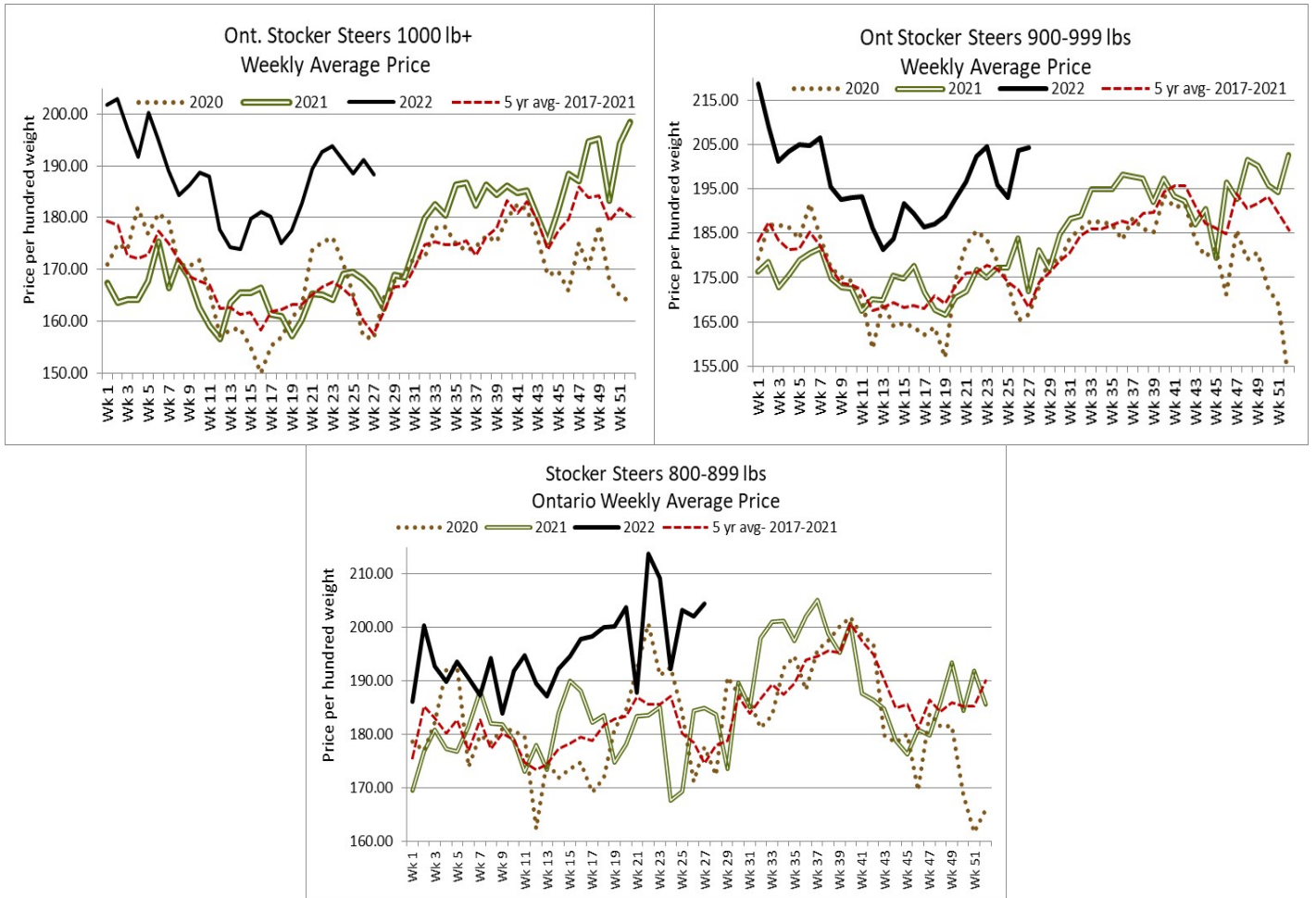
Calves and yearlings are selling on a strong active trade. Final results will be posted on Monday's report.



Ontario auction sales on **Thursday** saw weighted prices for:

	Volume	Price Range	Average	Top
Large & Medium Frame Fed Steers 1250 lbs +	36	159.00-191.00	180.36	194.50
Large & Medium Frame Fed Heifers 1000 lbs +	45	174.51-190.16	184.87	195.75
Fed Steers, Dairy & Dairy Cross 1250 lbs +	53	141.00-158.00	151.81	158.00
Fed Heifers, Dairy & Dairy Cross 1000 lbs +	20	119.58-148.80	138.84	154.00
Cows	498	94.94-119.82	106.52	156.00
Bulls - under 1600 lbs	8	127.50-163.75	140.00	165.00
Bulls - over 1600 lbs	13	129.23-159.08	147.19	160.00
Veal over 600 lbs	159	146.15-174.68	162.47	195.00

To check out individual auction market results on the Ontario Beef website go to <https://www.ontariobeef.com/markets/market-reports.aspx>



ONTARIO STOCKER AND FEEDER TRADE

Stocker sale at **Ontario Livestock Exchange: July 7, 2022 – 250** Stockers

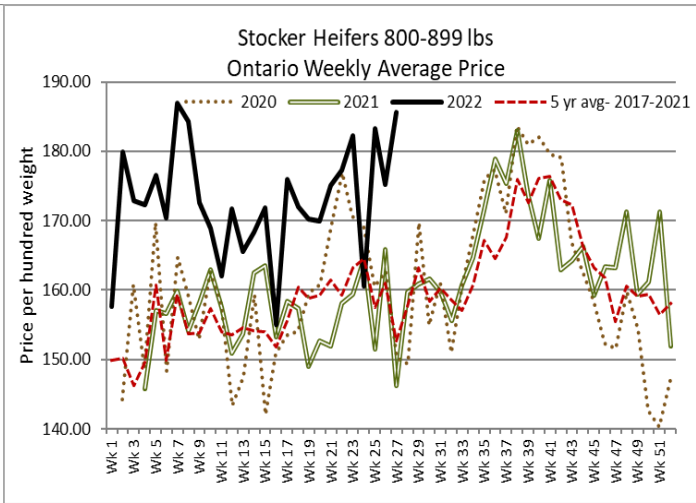
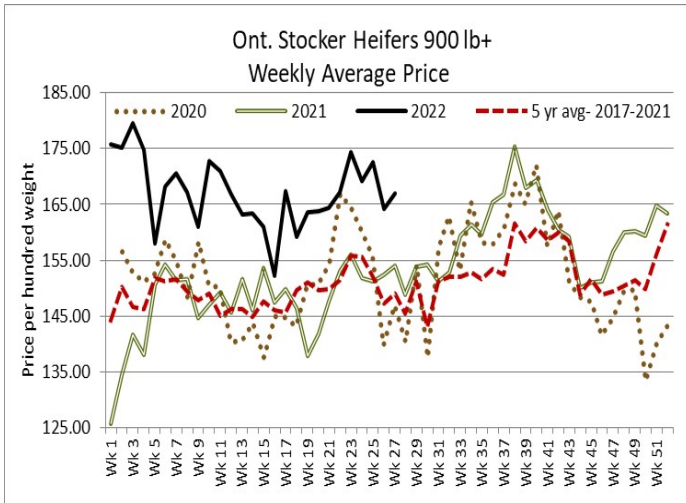
Steers	Price Range	Average	Top	Heifers	Price Range	Average	Top
1000+	155.00-188.00	175.17	188.00	900+	127.50-171.00	157.56	171.00
900-999	175.00-195.00	188.67	195.00	800-899	155.00-195.00	173.21	195.00
800-899	165.00-195.50	180.88	195.50	700-799	137.50-180.00	156.97	190.00
700-799	179.00-197.50	184.15	212.50	600-699	150.00-217.50	182.63	217.50
600-699	187.50-250.00	221.80	250.00	500-599	185.00-250.00	229.00	250.00
				400-499	202.50-230.00	219.38	230.00

Stockers continued to sell actively on a strong demand. *Vaccinated sales every Wed at 1:00 pm.*

Stocker sale at: **Ontario Stockyards Inc: July 7, 2022 – 330** Stockers

Steers	Price Range	Average	Top	Heifers	Price Range	Average	Top
700-799	204.00-249.50	230.05	249.50	800-899	174.00-180.00	178.63	180.00
600-699	187.50-271.00	232.34	271.00	700-799	171.00-210.50	189.52	245.00
500-599	220.00-277.00	247.30	277.00	600-699	172.50-237.00	198.53	247.50
400-499	206.00-315.00	267.00	315.00	500-599	190.00-244.00	227.03	244.00
399-	215.00-305.0	274.00	305.00	400-499	165.00-247.00	210.73	247.00
				300-399	180.00-255.00	220.86	255.00

Stockers continued to sell on a strong, steady market.



U.S. BOXED BEEF CUT-OUT VALUES (U.S. funds)

	Choice	Select
	600-900	600-900
Cutout Values (noon estimate):	268.14	241.35
Change (from yesterday's close):	+0.07	-1.23
Current Five Day Average:	265.72	241.28

QUEBEC ELECTRONIC AUCTION MARKET (F.O.B. THE FEEDLOT)

	Price	Change from Last Week
For the week ending July 7, 2022	309.00-310.00	+1.13

ALBERTA DIRECT TRADE

Alberta's direct trade was steady to last week on a picked-up basis and steady to \$2.00 easier on the rail. Dressed sales were reported from \$290.00-\$292.00 delivered on a dressed basis and \$288.50-\$290.50 on a picked-up basis reports Canfax. Live sales were noted at \$176.00 picked up. Canfax reports: "Pick up times were all over the map, largely dependent on who bought the cattle. Some cattle would be picked up in 1-2 weeks while others were being scheduled for the middle of August delivery."

Steers - FOB	Live	176.00	Rail - FOB	288.50-290.50
Heifers - FOB	Live	176.00	Rail - FOB	288.50-290.50

U.S. TRADE (U.S. funds)

The U.S. cash cattle trade on Thursday was moderate in volume with prices steady to stronger in the southern states. Business in Texas was mainly \$137.00 live which is steady, while Kansas was steady to stronger from \$137.00-\$140.00. In the north live trade ranged from \$147.00-\$150.00 which is fully steady, while dressed deals saw a full trading range from \$230.00-\$238.00 which is steady to slightly easier. Today the market was quiet with just a few clean up deals in Iowa at \$236.00 dressed which is stronger, but it appears the bulk of trade for the week is completed.

Choice and Select Steers and Heifers:	Live	137.00-150.00
	Rail	230.00-238.00

CHICAGO MERCANTILE EXCHANGE

Closing quotes on futures **today** were as follows:

Live Cattle

Aug	133.95	-0.60
Oct	138.95	-0.90
Dec	145.07	-0.40
Feb	149.97	-0.20
Apr	153.42	+0.02
Jun	148.42	+0.20

Feeder Cattle

Aug	171.72	-0.75
Sep	174.72	-1.32
Oct	177.75	-1.57
Nov	180.27	-1.40
Jan	180.75	-1.10
Mar	181.60	-1.55

Corn

Jul	7.782	+31.2
Sep	6.332	+24.2
Dec	6.234	+27.2
Mar	6.286	+26.6
May	6.316	+26.2
Jul	6.292	+25.2

Soybeans

Jul	16.302	+39.0
Aug	15.132	+28.0
Sep	14.142	+31.2
Nov	13.964	+31.0
Jan	14.012	+31.0
Mar	13.934	+29.0

Soft Red Winter Wheat

Jul	8.792	+54.6
Sep	8.914	+55.0
Dec	9.064	+54.6
Mar	9.192	+54.0
May	9.234	+52.4
Jul	9.062	+49.2

Canadian \$

Spot	77.17	+0.12
Sep	77.17	+0.13
Dec	77.19	+0.14
Mar	77.20	+0.14
Jun	77.21	+0.14
Sep	77.20	+0.14

Beef Farmers of Ontario, 130 Malcolm Road, Guelph, ON N1K 1B1 Phone: (519) 824-0334 Fax: (519) 824-9101 or email: markets@ontariobeef.com