



Weekly Market Information Report



Week Ending Thursday June 11, 2009

The following information is collected from various sources and disseminated by the Ontario Cattlemen's Association.

ONTARIO DIRECT TO PACKER RAILGRADE CATTLE TRADE

This is a summary for the week of rail grade prices on a carcass weight basis, before grade and weight discounts.

A grade steers 159.00-168.00
A grade heifers 158.00-167.00

ONTARIO LIVE CATTLE TRADE

Ontario auction sales this week saw weighted average price ranges for
FED CATTLE

	Price Range	Average	Top	Last week Avg
Large Frame Steers +1250	87.88-101.19	94.66	110.00	96.34
Medium Frame Steers +1250	83.83-97.32	92.26	102.75	94.93
Large & Medium Frame Steers + 1250	87.31-101.61	94.39	110.00	96.35
Large Frame Heifers + 1000	86.36-97.87	93.07	100.00	97.56
Medium Frame Heifers + 1000	80.88-97.58	91.04	100.00	94.81
Large & Medium Frame heifers + 1000	83.49-98.85	92.75	100.00	96.18
Cows- All Weights	36.70-53.79	45.01	90.00	45.60
Bulls- All Weights	53.13-67.63	59.77	101.00	58.02

STOCKERS-Large and Medium Frame

STEERS	Volume	Price Range	Average	Top	Last week Avg
1000+	501	89.33-96.09	92.47	99.50	96.57
900-999	498	92.94-101.49	98.45	108.50	98.94
800-899	333	95.56-105.28	100.92	109.50	101.26
700-799	271	90.86-111.87	102.99	117.50	108.33
600-699	363	94.15-117.20	105.79	125.00	115.23
500-599	271	104.89-124.04	116.03	136.00	117.61
400-499	149	98.81-120.60	109.88	144.00	121.55
-399	59	88.59-131.39	109.12	147.00	115.84

HEIFERS	Volume	Price Range	Average	Top	Last week Avg
+900	344	82.03-93.05	88.30	106.25	93.13
800-899	281	80.97-93.55	88.63	103.50	96.27
700-799	143	84.93-102.10	96.65	114.50	100.74
600-699	300	95.21-111.87	104.93	119.50	106.17
500-599	327	94.94-117.77	108.35	125.00	110.21
400-499	138	94.74-115.67	106.95	144.00	111.97
300-399	42	88.43-104.33	97.76	138.00	108.16
299-	9	112.39-127.06	119.39	148.00	105.38

At Talbotville Livestock: Saturday June 6, 2009

	Price Range	Top
Good & Choice Steers	93.00-98.50	No tops
Good & Choice Heifers	92.00-98.00	No tops
Good Cows	42.50-52.50	63.00
Export Cows	38.00-49.50	
Good heavy bulls	57.00-66.00	

At Kawartha Lakes Co-op Auction Market: June 6, 2009

	Price Range	Average	Top
Cows	30.00-55.50	45.06	55.50
Bulls- all weights	52.06-81.00	64.83	101.00

At Denfield Livestock – June 9, 2009

	Price Range		Price Range
Choice steers	95.00-100.00	Choice Exotic Cross heifers	95.00-99.50
Good steers	90.00-95.00	Good heifers	90.00-95.00
Plain Steers	80.00-90.00	Plain heifers	80.00-90.00
Good fed cows	50.00-65.00	Good beef bulls	65.00-73.00
D1 & D2 cows	48.00-55.00	Good Holstein bulls	60.00-66.00
D3 & D4 cows	35.00-45.00	Good Holstein bull calves	\$130.00-\$200.00
Shells	25.00-35.00	Plain Holstein bull calves	\$20.00-\$100.00

At Renfrew Pontiac Livestock Ltd– June 9, 2009

	Price Range		Price Range
Replacement calves	90.00-115.00	Cows D1 & D2	50.000-56.50
Bulls	54.00-68.00	Cows D3	41.00-47.00
Bred cows-good x bred	N/T	Cows D4	32.00-38.50

ONTARIO STOCKER & FEEDER TRADE

Stocker sale at: **Brussels Livestock, June 5, 2009:** 1,563 stockers

STEERS	Price Range	Avg	Top	HEIFERS	Price Range	Avg	Top
1000+	95.00-99.25	97.02	99.25	900+	81.00-96.50	90.45	106.25
900-999	92.00-93.50	98.38	108.50	800-899	83.00-94.00	88.20	96.75
800-899	98.50-106.50	103.32	107.50	700-799	90.00-103.25	98.18	103.25
700-799	99.75-117.50	107.76	117.50	600-699	98.00-113.00	106.40	115.50
600-699	103.50-120.25	111.81	124.00	500-599	95.50-118.00	109.68	118.00
500-599	111.50-126.00	120.53	126.00	400-499	102.00-122.00	112.79	122.00
400-499	97.00-128.00	114.43	133.00				
399-	118.00-143.00	135.25	143.00				

Stocker Sale at: **Kawartha Lakes Coop Auction Market, June 6, 2009-** 133 stockers

STEERS	Price Range	Avg	Top	HEIFERS	Price Range	Avg	Top
700-799	65.00-99.50	86.90	99.50	600-699	85.00-101.50	92.25	101.50
500-599	87.50-124.50	106.70	124.50	500-599	80.00-115.00	97.47	115.00
400-499	96.00-120.00	107.86	120.00	400-499	77.00-107.00	98.50	107.00

Stocker sale: **Community Livestock Exchange-Hoards Station– June 9, 2009 –** 115 stockers

STEERS	Price Range	Avg	Top	HEIFERS	Price Range	Avg	Top
700-799	84.00-112.50	101.26	112.50	600-699	54.50-108.00	87.19	108.00
600-699	62.00-111.00	98.30	111.00	500-599	75.50-112.50	102.03	112.50
500-599	80.00-126.00	111.40	126.00	400-499	101.00-111.00	105.40	111.00
400-499	85.00-127.00	100.00	127.00				

Stocker sale: **Keady Livestock Market – June 9, 2009-** 411 stockers

STEERS	Price Range	Avg	Top	HEIFERS	Price Range	Avg	Top
900-999	99.00-105.20	103.99	105.20	800-899	103.50	103.50	103.50
800-899	97.50-109.00	104.62	109.00	700-799	80.00-114.50	106.63	114.50
700-799	72.00-108.00	92.70	108.00	600-699	100.50-119.50	112.48	119.50
600-699	105.00-117.00	111.19	118.00	500-599	101.50-120.00	112.53	120.00
500-599	116.00-130.00	123.90	130.00	400-499	73.00-115.50	107.00	115.50
400-499	109.00-118.00	113.69	118.00				

Stocker sale: **Renfrew Pontiac Livestock Ltd– June 9, 2009-** 135 stockers.

STEERS	Price Range	HEIFERS	Price Range
800-899	95.00-100.00	800-899	88.00-93.00
700-799	101.00-109.0	700-799	92.00-101.00
600-699	108.00-115.00	600-699	98.00-107.00
500-599	113.00-120.50	500-599	103.00-112.00
400-499	114.00-118.00	400-499	109.00-116.50
		300-399	118.00-120.00

Stocker sale: **Ontario Livestock Exchange – June 10, 2009-** 969 stockers

STEERS	Price Range	Avg	Top	HEIFERS	Price Range	Avg	Top
+1000	89.50-96.25	92.73	99.50	900+	87.00-93.25	90.04	94.25
900-999	93.50-100.50	98.04	102.00	800-899	50.00-87.75	86.15	87.75
800-899	97.75-104.00	100.26	107.00				
700-799	104.00-114.75	112.98	114.75				
600-699	106.00-118.25	115.23	118.25				
500-599	102.00-126.00	108.00	126.00				

Stocker Sale at: **Ontario Livestock Exchange, June 11, 2009 –** 174 stockers

STEERS	Price Range	Avg	Top	HEIFERS	Price Range	Avg	Top
700-799	76.00-98.00	90.56	107.00	600-699	96.00-106.00	102.18	110.00
600-699	31.00-109.00	61.12	112.00	500-599	95.00-118.00	110.23	118.00
500-599	105.00-130.00	116.59	130.00	400-499	96.00-115.00	103.73	118.00
400-499	95.00-115.00	104.30	125.00				
399-	113.00-122.00	115.33	122.00				

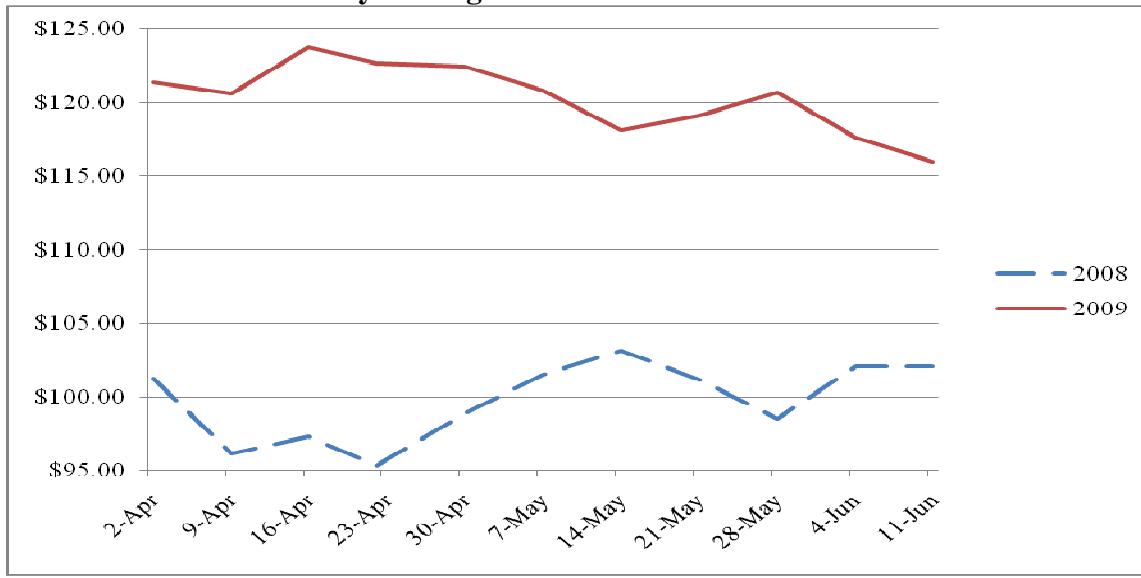
Stocker Sale at: **Ontario Stockyards Inc, June 11, 2009-** 404 stockers

STEERS	Price Range	Avg	Top	HEIFERS	Price Range	Avg	Top
1000+	75.00-89.00	83.02	89.00	900+	72.00-83.00	78.40	85.50
900-999	77.00-89.00	86.81	89.00	800-899	78.00-87.00	83.20	87.00
800-899	83.00-104.00	93.22	109.50	700-799	85.00-99.00	94.21	105.00
700-799	87.00-112.50	101.25	112.50	600-699	97.00-111.00	105.98	118.00
600-699	99.00-115.00	107.72	123.00	500-599	103.00-123.50	112.64	125.00
500-599	102.00-118.00	112.67	125.00	400-499	100.00-119.00	108.69	144.00
400-499	104.00-126.00	115.42	136.00	300-399	91.00-117.00	110.26	117.00
399-	65.00-119.00	89.81	119.00				

Stocker Sale at: **Ottawa Livestock Exchange, June 11, 2009-** 140 stockers

STEERS	Price Range	Avg	Top	HEIFERS	Price Range	Avg	Top
700-799	94.00-116.00	105.57	116.00	700-799	82.00-88.00	85.56	94.00
600-699	103.00-125.00	109.73	125.00	600-699	90.00-103.00	97.17	103.00
500-599	81.00-123.00	103.50	123.00	500-599	92.00-108.00	99.50	116.00
400-499	123.00-133.00	126.20	133.00	400-499	91.00-111.00	102.90	127.00
399-	104.00-147.00	126.26	147.00	299-	120.00-148.00	133.00	148.001

Weekly Average Price for Steers 500-599 lbs.



ALBERTA DIRECT TRADE

Week Ending **Thursday June 11, 2009**

Steers	Live	85.35-87.35	Flat rail	143.85-145.00
Heifers	Live	85.25-87.35	Flat rail	144.00-144.85

U.S. TRADE (U.S. funds)

Week Ending **Thursday June 11, 2009**

Weekly range for choice and select steers and heifers	Live	N/T
	Rail	N/T

QUEBEC ELECTRONIC AUCTION MARKET (F.O.B. the feedlot)

Week Ending **Thursday June 11, 2009**

A1, A2 Steers & Heifers	Price	159.00-165.00
------------------------------------	--------------	---------------

CANADIAN BOXED BEEF CUT-OUT VALUES

Week Ending	AAA	AA
May 29, 2009	1.7780	1.6623
May 22, 2009	1.8232	1.7295
May 15, 2009	1.8640	1.7721

U.S. BOXED BEEF CUT-OUT VALUES (U.S. funds)

	Choice	Select
	600-900	600-900
Current 5 day average:	139.75	133.05

USDA ESTIMATED CATTLE KILL

	Week Ending	Previous Week	Year Ago
	June 13, 2009		
Grand Total	663,000	670,000	683,000

AVERAGE CARCASS WEIGHTS – CANADA

	Steers	Heifers
June 6, 2009	818	757
May 31, 2008	814	763

FEDERALLY INSPECTED CANADIAN KILL

	Week Ending June 6, 2009	YTD	% of Yr. Ago
Grand Total	64,491	1,313,528	98%
Alberta Slaughter	50,388	950,928	103%
Ontario Slaughter	11,128	229,689	95%

LIVE CATTLE EXPORTS-ONTARIO

	Week ending May 23, 09	Week ending May 16, 09	Year to Date
Total live slaughter cattle exported from Ont to the US.	1,812	1,737	54,932
Steers & Heifers	1,558	1,398	43,703
Cows	247	331	10,808
Bulls	7	8	421

LIVE CATTLE-CANADA

IMPORTS		EXPORTS	
Jan 1 – April 30, 09		Jan 1 – May 30, 09	
Pure bred	521	Slaughter steers & heifers	241,536
Non-pure bred	15,414	Feeder steers & heifers	176,219
		Cows & Bulls	82,516

BEEF EXPORTS

	United States Jan 1– June 6, 09	Mexico Jan 1-April 30
Total	112,771 tonnes	11,452 tonnes

BEEF PRODUCTION

	Jan 1 – June 6, 09	Last Year Same Time	% Change
Fed	387,249 tonnes	378,908 tonnes	+2.2%
Non-fed	79,322 tonnes	102,042 tonnes	-22.3%

BEEF IMPORTS

	Jan 1 – May 30, 09	Last Year Same Time	% Change
United States	44,853 tonnes	45,738 tonnes	-1.9%
Non-NAFTA	28,761 tonnes	15,173 tonnes	+89.6%
Total	74,056 tonnes	61,654 tonnes	+20.1%

CHICAGO MERCANTILE EXCHANGE

Closing quotes on futures today were as follows:

Live Cattle			Feeder Cattle			Corn		Soybeans		Canadian \$				
\$/cwt US			\$/cwt US			\$/bu US	¢/bu	\$/bu US	¢/bu					
Jun	80.47	+0.37	Aug	97.57	+1.20	Jul	4.254	-15.4	Jul	12.454	-21.4	Spot	89.41	-1.70
Aug	81.60	+0.15	Sep	97.57	+0.97	Sep	4.344	-15.4	Aug	11.712	-14.2	Jun	89.39	-1.72
Oct	87.10	+0.15	Oct	98.62	+1.42	Dec	4.476	-15.4	Sep	11.084	-16.2	Sep	89.44	-1.72
Dec	88.82	-0.07	Nov	98.32	+0.45	Mar	4.594	-14.6	Nov	10.764	-13.2	Dec	89.54	-1.70
Feb	90.27	-0.52	Jan	98.00	+1.50	May	4.670	-14.6	Jan	10.830	-13.0	Mar	89.67	-1.70
Apr	92.20	-0.37	Mar	96.00	+0.10	Jul	4.744	-14.4	Mar	10.794	-13.2	Jun	89.80	-1.70

Ontario Cattlemen's Association, 130 Malcolm Rd., Guelph, ON N1K 1B1 Phone: (519) 824-0334 Fax: (519) 824-1930 or email:
mkinfo@cattle.guelph.on.ca or visit our web site at www.cattle.guelph.on.ca

Comments for the week ending June 11, 2009

The fed cattle market continued to trend lower again this week. There were 1,023 fed cattle sold through auction markets down 100 from last week and 584 less than last year at this time. Steers sold from \$87.31-\$101.61 averaging \$94.39 down \$1.96 from last week and \$3.78 higher than last year at this time. Heifers traded from \$83.49-\$98.85 down \$3.43 from last week and \$3.84 stronger than year ago prices. Auction markets reported a moderate to dull demand with prices \$1.00-\$2.00 lower.

The slaughter cow market was slightly lower this week. There were 1,784 slaughter cows sold through auction markets down 318 from last week and 1,434 less than last year at this time. Cows traded from \$36.70-\$53.79 averaging \$45.01 down \$0.59 from last week and \$3.41 lower than year ago prices. Auction markets reported prices as continuing easier early in the week, to steady by mid week.

The replacement cattle market was also under some pressure this week. There were 4,029 replacement cattle sold through auction markets down 20.2% from last week and 9% less than the same time last year. Auction markets reported grass types as steady with all others under pressure. Actual average prices for steers 900 lbs+ were \$2.29 lower while heifers 800 lbs + averaged \$6.40 lower. Steers 600-800 lbs averaged \$5.34-\$9.44 lower and heifers 600-800 lbs averaged \$1.24-\$4.09 lower. Steers and heifers 500-600 lbs averaged \$1.58-\$1.86 lower.

Ontario railgrade prices continued to decline as the week progressed. Steers started the week off at \$161-\$168 dropping to \$159-\$165 by mid week. Heifers traded from \$160-\$167 early week to \$158-\$164 by mid week. Prices were \$2.00 lower on average.

Alberta's fed cattle market was a little stronger this week. Steers traded from \$85.35-\$87.35 live and \$143.85-\$145.00 flat rail. Heifers sold from \$85.25-\$87.35 live and \$144.00-\$144.85 flat rail. Live steers averaged \$0.87 higher while live heifers averaged \$1.12 higher than last week.

U.S. cash cattle trade remained at a complete standstill until Friday afternoon when moderate to active trade took place in all areas. Northern business was \$1.00 lower than last week at \$131.00 dressed while southern trade was fully steady to last week at \$81.50-\$82.00 live.