



Weekly Market Information Report for the week ending Thursday August 15, 2019

The following information is collected from various sources and disseminated by Beef Farmers of Ontario.

ONTARIO DIRECT TO PACKER RAILGRADE CATTLE TRADE

Prices are on a carcass weight basis before grade and weight discounts. Weekly Range:

A Grade Steers 235.00-240.00- One packer not buying Mon-Wed

A Grade Heifers 235.00-240.00- One packer not buying Mon-Wed

ONTARIO LIVE CATTLE TRADE

Ontario auction sales this week saw weighted average price ranges for:

FED CATTLE	Volume	Price Range	Average	Top	Last Week Avg
Large Frame Steers +1250	98	125.24-149.66	139.92	156.00	133.52
Medium Frame Steers +1250	91	127.64-143.89	137.49	162.50	138.24
Large & Medium Frame Steers +1250	189	127.37-148.05	139.93	162.50	139.50
Large Frame Heifers +1000	36	121.28-137.33	131.80	144.50	130.68
Medium Frame Heifers +1000	104	121.88-141.81	134.03	153.00	137.43
Large & Medium Frame Heifers +1000	140	118.41-140.55	132.95	153.00	137.11
Fed steers, Dairy & Dairy Cross +1250	80	102.84-112.80	108.13	117.50	106.22
Fed heifers, Dairy & Dairy Cross +1000	90	76.05-95.32	85.91	103.50	92.27
Cows - All Weights	2,021	61.79-91.51	76.06	118.00	77.19
Bulls - All Weights	120	88.44-112.69	101.10	135.00	104.14

STOCKERS - Large and Medium Frame

STEERS	Volume	Price Range	Average	Top	Last Week Avg
1000+	1,056	165.80-187.04	177.08	189.00	174.87
900-999	624	176.91-193.75	185.51	201.00	182.80
800-899	203	175.89-196.45	186.59	205.00	188.96
700-799	179	167.76-205.04	190.26	221.00	191.13
600-699	176	144.91-220.90	189.48	247.00	198.02
500-599	170	145.84-236.50	196.02	260.00	201.67
400-499	93	167.15-229.16	201.77	264.00	210.80
-399	44	164.72-253.94	217.15	270.00	189.53

HEIFERS	Volume	Price Range	Average	Top	Last Week Avg
+900	402	141.93-164.62	153.71	175.00	153.65
800-899	140	147.19-174.38	161.42	182.00	160.31
700-799	135	136.88-176.60	160.35	199.00	169.60
600-699	153	141.17-188.66	169.92	210.00	175.25
500-599	131	139.21-192.34	167.66	222.00	172.28
400-499	81	150.59-190.97	172.92	223.00	174.07
300-399	29	162.28-225.83	189.46	265.00	159.08
-299	8	134.50-177.25	152.38	216.00	N/T

At Kawartha Lakes Community Sale Barn, July 27, 2019- 128 cows, 9 bulls, 6 stockers, 80 veal

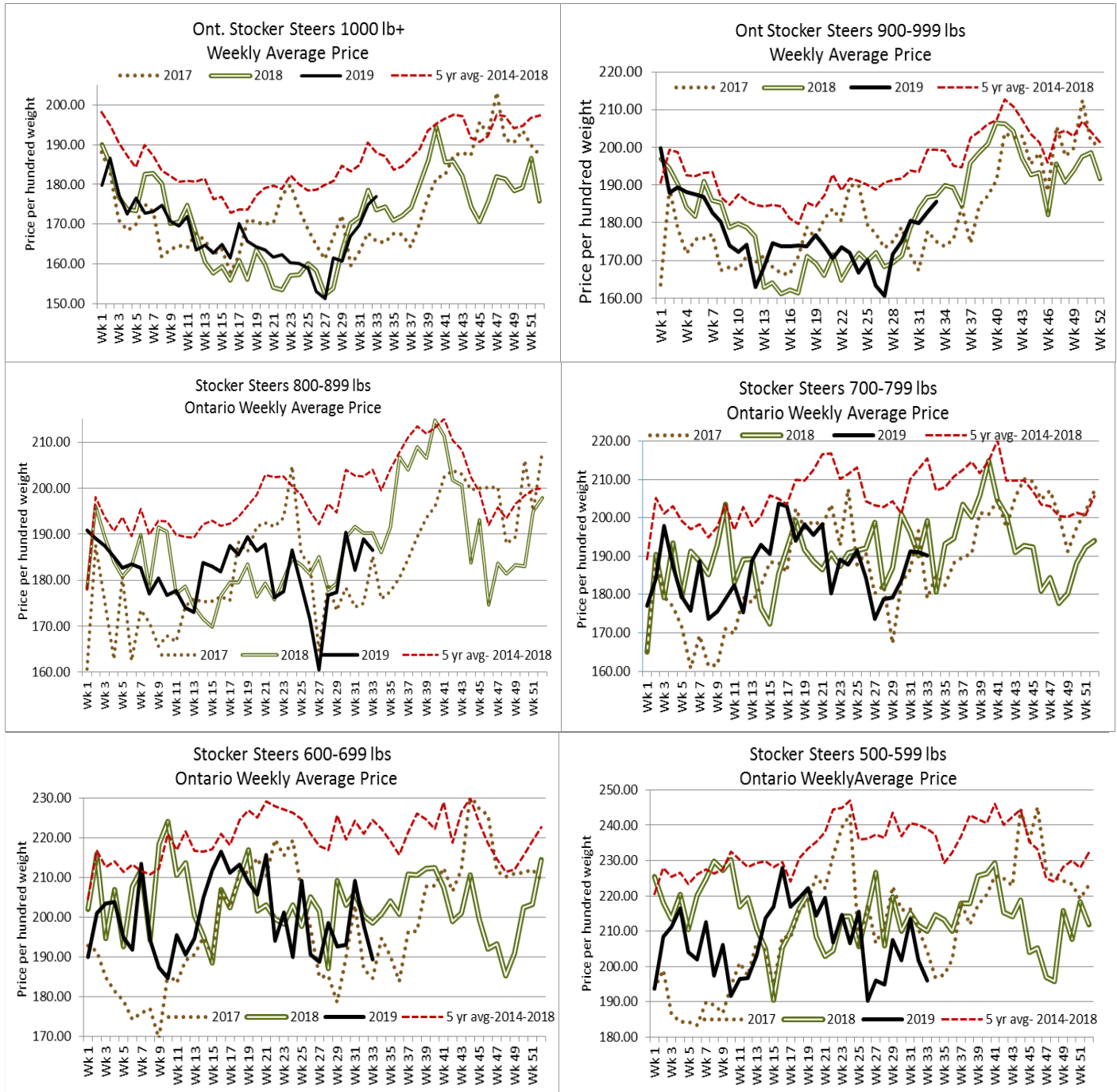
	Price Range	Avg.	Top
Cows	69.00-102.50	82.37	118.00
Bulls under 1600 lbs	85.00-113.00	101.12	113.00
Veal 600 lbs+	67.50-120.00	89.18	139.00
Veal 125 lbs and under	22.50-180.95	38.77	180.95

Denfield Livestock Exchange Inc., August 13, 2019: 125 Fed Cattle, 53 Veal, 5 Bulls, 112 Cows

	Volume	Price Range	Average	Top
Large & Medium Frame Fed Steers +1250 lbs	58	134.00-145.75	140.84	162.50
Large & Medium Frame Fed Heifers +1000 lbs	41	136.00-144.50	142.77	153.00
Cows	112	71.50-100.00	8408	106.00
Veal over 600 lbs	40	79.00-103.00	91.61	129.00

At Aylmer Stockyards Inc.: August 14, 2019- 47 Veal, 127 Cows, 16 Fed Cattle, 20 stockers, 2 bulls

	Price Range	Average	Top
Cows	50.00-96.49	76.70	96.49
Veal over 600 lbs	83.99-122.99	101.60	122.99



ONTARIO STOCKER & FEEDER TRADE

Stocker sale at **Brussels Livestock: August 9, 2019 – 1,052** Stockers

Steers	Price Range	Average	Top	Heifers	Price Range	Average	Top
1000+	163.00-186.25	175.20	188.00	900+	149.00-164.50	157.82	171.75
900-999	178.00-195.75	187.94	195.75	800-899	151.00-182.00	168.30	182.00
800-899	188.50-205.00	195.34	205.00	700-799	137.00-173.50	159.14	173.50
700-799	180.00-205.00	196.91	214.00	600-699	145.00-206.00	183.14	206.00
600-699	166.00-220.50	199.00	247.00	500-599	159.00-202.00	173.89	205.00
500-599	193.00-254.00	219.37	260.00	400-499	178.00-215.00	199.53	215.00
400-499	200.00-260.00	242.18	260.00	300-399	210.00-235.00	226.67	235.00
399-	222.00-260.00	247.33	260.00				

Stocker sale at: **Community Livestock Exchange: August 13, 2019 – 117** Stockers

Steers	Price Range	Average	Top	Heifers	Price Range	Average	Top
700-799	135.00-189.99	158.49	189.99	700-799	122.50-172.99	152.69	172.99
600-699	110.00-210.00	173.59	210.00	600-699	72.49-137.50	116.30	192.99
500-599	125.00-239.99	188.19	239.99	500-599	102.49-194.99	142.30	194.99
400-499	162.50-257.50	222.40	257.50	400-499	117.50-194.99	159.20	194.99

Stocker sale at **Keady Livestock Market, August 13, 2019- 671** stockers

Steers	Price Range	Average	Top	Heifers	Price Range	Average	Top
1000+	178.75-187.25	184.78	187.25	900+	144.00-167.50	154.14	167.50
900-999	181.50-188.00	184.85	191.50	800-899	149.00-161.00	151.67	167.00
800-899	181.00-196.00	186.54	196.00	700-799	151.00-187.50	180.93	187.50
700-799	200.00-221.00	210.38	221.00				
600-699	235.00-238.00	236.75	238.00				
500-599	100.00-255.00	196.88	256.00				

Stocker sale at: **Renfrew Pontiac Livestock: August 13, 2019 – 57** Stockers

Steers	Price Range	Average	Top	Heifers	Price Range	Average	Top
900-999	130.00-179.49	171.39	179.49		Not enough to		
700-799	173.50-188.99	176.80	188.99		Establish a price		
600-699	154.00-210.00	182.89	210.00		report		
500-599	137.50-235.00	217.30	235.00				
400-499	137.50-225.99	179.49	225.99				

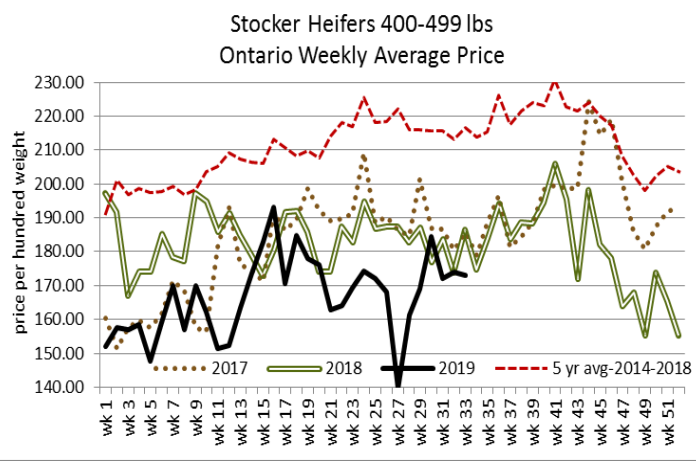
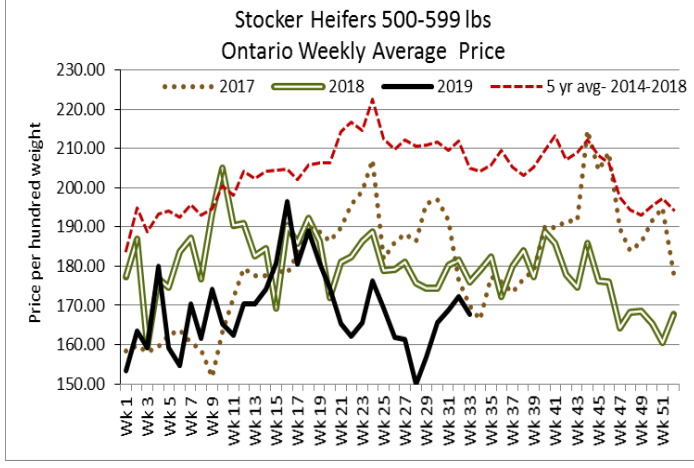
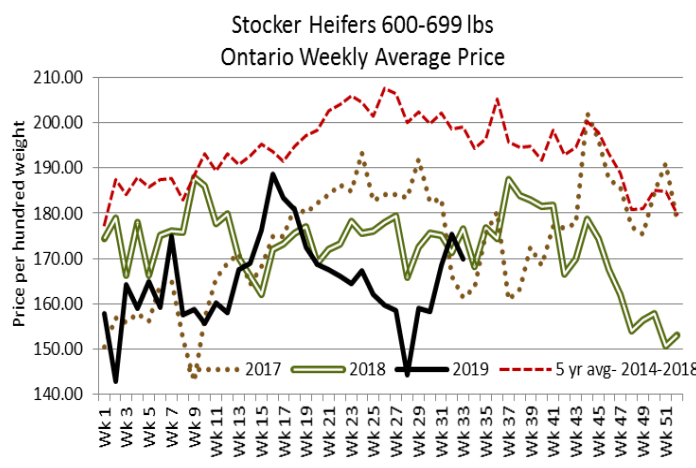
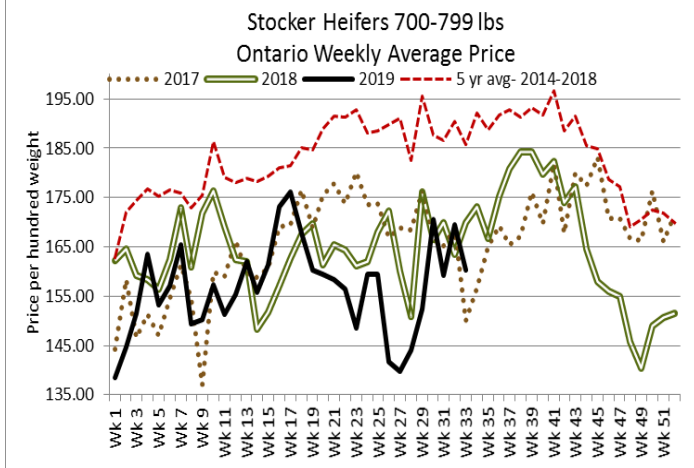
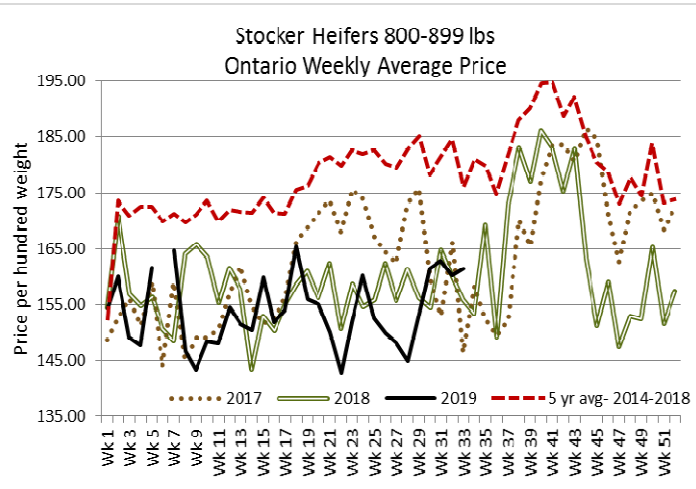
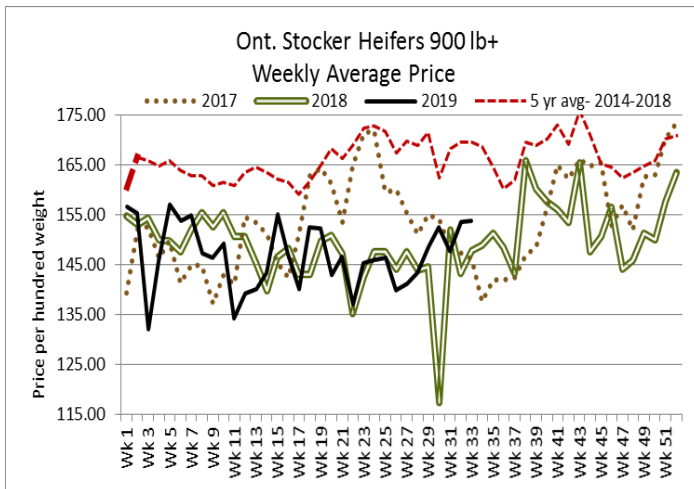
Stocker sale at **Ontario Livestock Exchange: August 14, 2019 – 807** Stockers

Steers	Price Range	Average	Top	Heifers	Price Range	Average	Top
1000+	164.00-189.00	176.62	189.00	800-899	179.50-181.00	180.63	181.00
900-999	183.50-201.00	189.04	201.00				
800-899	184.00-192.50	188.00	192.50				

Stocker sale at: **Ontario Livestock Exchange, August 15, 2019– 320** Stockers

Steers	Price Range	Average	Top	Heifers	Price Range	Average	Top
700-799	155.00-194.00	181.55	194.00	700-799	129.00-150.00	139.68	164.00
600-699	76.00-221.00	160.36	222.50	600-699	112.50-175.00	158.93	175.00
500-599	137.50-215.00	189.64	215.00	500-599	125.00-177.50	149.03	177.50
400-499	85.00-175.00	122.50	217.50	400-499	122.50-230.00	164.44	165.00
399-	125.00-242.50	191.88	250.00				

Stockers sold on a good active steady trade.



Stocker sale at **Ontario Stockyards Inc., August 15, 2019**– 539 Stockers

Steers	Price Range	Average	Top
1000+	110.00-164.00	139.05	164.00
900-999	119.00-196.50	171.38	196.50
800-899	162.00-197.50	186.46	197.50
700-799	167.00-211.00	193.12	220.50
600-699	152.50-227.50	196.53	237.00
500-599	140.00-236.00	179.06	248.00
400-499	160.00-221.00	189.77	242.00
399-	237.50-270.00	262.53	270.00

Heifers	Price Range	Average	Top
900+	110.50-175.00	141.83	175.00
800-899	138.00-173.00	156.68	179.00
700-799	141.00-191.00	166.04	199.00
600-699	162.50-205.00	183.64	210.00
500-599	152.00-214.00	190.55	222.00
400-499	170.00-207.00	194.17	223.00
300-399	177.50-230.00	202.36	230.00

Stocker sale at: **Ottawa Livestock Exchange, August 15, 2019– 91** Stockers

Steers	Price Range	Average	Top	Heifers	Price Range	Average	Top
700-799	100.00-194.00	167.67	194.00	600-699	164.00-180.00	169.20	180.00
600-699	177.00-216.00	205.00	216.00	500-599	116.00-196.00	167.89	196.00
500-599	124.00-228.00	208.91	228.00				
400-499	226.00-252.00	239.09	252.00				
399-	80.00-256.00	203.63	256.00				

LIVE CATTLE EXPORTS-ONTARIO

	Week ending July 27, 2019	Week ending July 20, 2019	Year to Date
Total live slaughter cattle exported from Ontario to the U.S.	1,736	1,981	75,753
Steers & Heifers & Cows	1,481	1,723	66,939
Bulls	255	258	8,814

AVERAGE CARCASS WEIGHTS – CANADA

	Steers	Heifers
Aug10, 2019	906	825
Aug 3, 2019	896	807
Aug 11, 2018	886	818

FEDERALLY INSPECTED CANADIAN PROCESSING

	Week Ending Aug 10, 2019	# of hd change from week ago	YTD	% Change (Week Ago)	% Change (Year Ago)
Grand Total	59,537	-2,081	1,910,474	-3%	+6%
Western Slaughter	48,041	-243	1,491,868	-1%	+6%
Eastern Slaughter	11,496	-1,838	418,606	-14%	+5%

USDA ESTIMATED CATTLE PROCESSING VOLUME

	Week Ending August 17, 2019	Previous Week	Year Ago
Grand Total	651,000	642,000	659,000

ALBERTA DIRECT TRADE

For the week ending August 15, 2019

Steers	Live FOB	N/T	Rail FOB	N/T
Heifers	Live FOB	N/T	Rail FOB	N/T

U.S. TRADE (U.S. funds)

For the week ending August 15, 2019

Choice and Select Steers and Heifers:	Live	103.00-108.65
	Rail	165.00-172.00

QUEBEC ELECTRONIC AUCTION MARKET (F.O.B. THE FEEDLOT)

	Price	Change from Last Week
For the week ending August 15, 2019	232.25-236.00	-4.32

U.S. BOXED BEEF CUT-OUT VALUES (U.S. funds)

	Choice 600-900	Select 600-900
Current Five Day Average:	225.96	201.76

CANADIAN BOXED BEEF CUT-OUT VALUES

Week Ending	AAA	AA
July 26, 2019	2.7085	2.4442
July 19, 2019	2.6827	2.4655
July 12, 2019	2.7341	2.5018

BEEF EXPORTS – CANADA

	United States Jan 1- June 30	Change from last year YTD	Mexico Jan 1- June 30	Change from last year YTD
Total	155,536 tonnes	+12% or +16,098 tonnes	7,172 tonnes	-2% or -149 tonnes

LIVE CATTLE – CANADA

IMPORTS		Import % change from 2018 YTD	EXPORTS		Export % change from 2018 YTD
Jan 1- June 30			Jan 1- Aug 3, 2019		
Pure bred	2,045	-36%	Slaughter steers & heifers & cows	276,399	+28%
Non-pure bred	90,240	+45%	Feeder cattle & calves	153,668	+9%
			Bulls	24,674	+0%

BEEF PRODUCTION – CANADA

	Jan 1 – Aug 10/19	Last Year Same Time	% Change
Fed	628,780 tonnes	580,794 tonnes	+8%
Non-fed	109,197 tonnes	104,679 tonnes	+4%

BEEF IMPORTS – CANADA

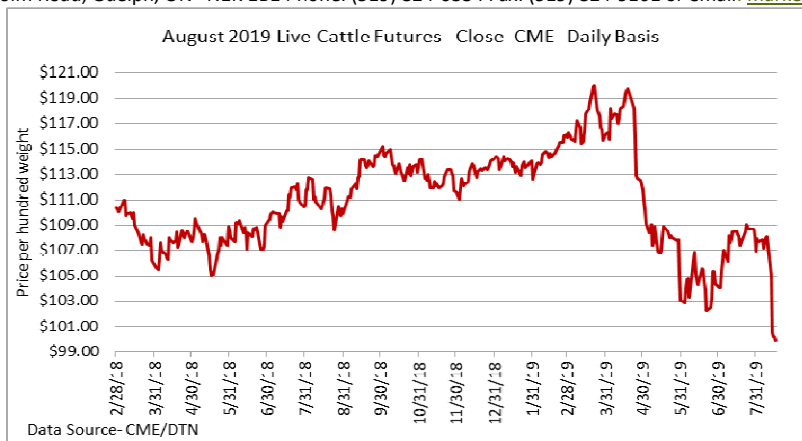
	Jan 1 – Aug 10/19	Last Year Same Time	% Change
United States	65,330 tonnes	76,301 tonnes	-14%
Non-CUSMA	23,884 tonnes	32,060 tonnes	-26%
EU-28 (beef/veal total)	3,210 tonnes	1,248 tonnes	+157%
Total	97,232 tonnes	114,802 tonnes	-15%

CHICAGO MERCANTILE EXCHANGE

Closing quotes on futures today were as follows:

Live Cattle			Feeder Cattle			Corn			Soybeans			Canadian \$		
Aug	99.92	-0.27	Aug	134.57	-1.20	Sep	3.710	+10.2	Aug	8.672	+9.2	Spot	75.36	+0.30
Oct	98.05	-0.47	Sep	132.37	-0.92	Dec	3.806	+9.6	Sep	8.796	+9.0	Sep	75.39	+0.30
Dec	103.52	-0.75	Oct	132.85	-0.90	Mar	3.926	+9.2	Nov	8.934	+9.2	Dec	75.47	+0.30
Feb	108.92	-0.62	Nov	132.75	-0.90	May	4.000	+8.6	Jan	9.064	+9.4	Mar	75.54	+0.31
Apr	111.30	-0.70	Jan	130.92	-0.85	Jul	4.056	+8.0	Mar	9.174	+9.2	Jun	75.53	+0.30
Jun	104.82	-0.82	Mar	130.30	-0.70	Sep	4.050	+5.6	May	9.280	+9.0	Sep	75.52	+0.29

Beef Farmers of Ontario, 130 Malcolm Road, Guelph, ON N1K 1B1 Phone: (519) 824-0334 Fax: (519) 824-9161 or email: markets@ontariobeef.com



Comments for the week ending August 15, 2019

329 fed steers and heifers sold through auction markets this week which is fully steady to last week, but 100 more than this time last year. Fed steers ranged from \$127.37-\$148.05 averaging \$139.93 up \$0.43 from last week and \$1.21 above year ago prices. Heifers traded from \$118.41-\$140.55 averaging \$132.95 down \$4.16 from last week and \$2.48 stronger than year ago prices. Auction markets reported trade as steady for most of this reporting period, but by Wednesday trade was \$2.00-\$3.00 cwt lower on a light offering and ended the week down \$2.00 cwt from last week.

Ontario railgrade prices were reported the previous Friday at \$240.00 dressed for both steers and heifers with delivery within the next week or two. By Monday, one packer had pulled their bid but prices remained at the \$240.00 price. By Wednesday the market was steady at \$240.00, but still with one packer not buying. By Thursday, all packers were bidding with sales from \$235.00-\$240.00 dressed. This week's average price is up \$1.00 on average, however purchases were for more current delivery. This week's price is up \$9.00 cwt from this time last year. Prices seasonally decline this time of year, however the fire at the Tyson plant in Kansas Friday night has put serious downward pressure on the U.S. cattle trade. Whether or not that will have a huge effect on Ontario prices, and if so how much of an impact, are the biggest questions moving forward.

2,021 fed/cull cows sold through auction markets this week down 21 from last week and 125 more than last year at this time. Cows traded from \$61.79-\$91.51 averaging \$76.06 down \$1.13 from last week and \$14.88 stronger than year ago prices. Auction markets reported trade early in this reporting period as steady to stronger. By Tuesday trade was barely steady to slightly easier, with one market noting prices up \$5.00 cwt on a good quality offering. By Wednesday the market was holding steady, but by Thursday trade was barely steady.

3,624 stocker and feeder cattle were on offer at Ontario auction markets this week, up 1,351 head from last week and 1,115 more than last year at this time. Auction markets reported calves as trading steady. Heavier cattle were noted as slightly higher to start, but as the week progressed the heavier cattle were steady to barely steady. By week's end, replacement cattle were noted as steady on the good quality, with plainer and fleshier types selling barely steady to lower. Grass cattle were reported at a premium. Actual average prices this week saw steers 400-500 lbs down \$9.03 from last week's weighted average, 500-600 lbs were down \$5.65, 600-700 lbs down \$8.54, 700-800 lbs down \$0.87, 800-900 lbs down \$2.37, 900-1000 lbs up \$2.71 and steers 1000 lbs and over averaged \$2.21 stronger than last week. Heifers weighing 400-500 lbs were down \$1.15 from last week on average, 500-600 lbs down \$4.62, 600-700 lbs down \$5.33, 700-800 lbs down \$9.25, 800-900 lbs up \$1.11 and heifers 900 lbs and over averaged \$0.06 higher than last week on average.

The Quebec electronic market this week ranged from \$232.25-\$236.00 dressed, down \$4.32 from the previous week on average.

Alberta direct trade this week was too light to establish a price report. Canfax noted bids in the low to mid 230's delivered, on a dressed basis on Wednesday, but no trade occurred. On Thursday Canfax reported bids at \$234.00 delivered, but again, no sales. Canfax notes: "Thursday bids were stronger than Wednesday but are 10.00-12.00 lower than last week. Packers are wanting to buy cattle at sharply lower money while producers seem willing to carry cattle into next week. Packers were indicating it is going to take longer to lift cattle. Yesterday there were reports some cattle would not be picked up until mid-September."

The US cash cattle trade for the week ending August 9th, was easier with trade scattered through the week in the north, however the southern trade was delayed until late Friday. In the south business ranged from \$108.00-\$111.00, mostly \$110.00 down \$1.00 on average. In the north trade ranged from \$178.00-\$185.00 with prices declining as the week progressed. Trade in the north averaged \$181.00-\$182.00, down \$2.00 on average. The USDA Mandatory Price Report for the week saw live sales range from \$108.00-\$117.00, with steers averaging \$112.37 down \$1.45, while heifers averaged \$111.43 down \$0.82. On the rail prices for the week ranged from \$178.00-\$185.00 dressed, with steers averaging \$182.23 down \$2.07 and heifers \$180.96 down \$2.20.

This week the market was under pressure following a fire at the Tyson processing plant in Kansas on Friday night, which will be closed indefinitely as the damage is assessed and eventually repaired. In the meantime alternative plants will have to be sourced to process the already purchased cattle as well as part of the Kansas offering moving forward. The Tyson-Kansas plant processes 6-7% of the U.S. volumes or around 6,000 head per week. Cattle futures were down the limit in response to the news on Monday resulting in expanded limits on Tuesday of 450 for the live cattle and 675 for the feeders. On Tuesday, live cattle futures were mostly down the new limit while feeder cattle were close to limit lower, with one contract actually down the expanded limit. Wednesday, live cattle futures were just a touch lower on the nearby contracts, with contracts from December onward improving by 60-197 points. The feeder cattle on Wednesday saw the August contract up the expanded limit with the remainder of contracts also sharply higher. On the cash market trade in the south Wednesday was light to moderate with sales noted at \$105.00 live, down \$5.00 from last week. Sales online were also at \$105.00 live. In the north a couple of deals were noted at \$169.00-\$170.00 dressed, down at \$11.00-\$13.00 from last week, but not enough to establish a market for the week. Thursday, a light trade in the north was reported from \$170.00-\$172.00 dressed, mostly \$172.00 down \$10.00 from last week, with a few sales in Iowa at \$107.00-\$108.00 live, down \$5.00-\$7.00 cwt from last week. Overall, so far this week prices are down \$5.00-\$7.00 on a live basis and \$10.00-\$12.00 on a dressed basis. Some clean up trade could develop this afternoon, but the bulk of trade has been completed.

US boxed beef prices increased considerably due to the loss of production from the Kansas plant shut down. USDA boxed beef prices since Monday have increased by \$12.88 for select and \$17.50 on the choice, by Thursday close, which should motivate packers to ramp up production wherever possible.

Agcenter.com reports: TYSON GARDEN CITY PLANT UPDATE- "Tyson's Fresh Meats Division CEO Steve Stouffer met with media at the Garden City plant yesterday to inform the public and suppliers that Tyson is working as quickly as possible to restore major damage to its beef processing facility. He said it will be months rather than weeks before the plants is fully operational. While the structural damage is not a large area, the fire impacted major critical systems, including electrical that will be more difficult to repair. He said it appeared the fire was started by a welding torch. Tyson said the structural work can begin immediately but more time is required for the electrical repairs. Stouffer declined to offer a firm timeline and said Tyson is still getting more information on the damage and repairs."