



Weekly Market Information Report for the week ending Thursday February 20, 2020

The following information is collected from various sources and disseminated by Beef Farmers of Ontario.

ONTARIO DIRECT TO PACKER RAILGRADE CATTLE TRADE

Prices are on a carcass weight basis before grade and weight discounts. Weekly Range:

A Grade Steers	251.00 with a few at 254.00
A Grade Heifers	250.00-251.00

ONTARIO LIVE CATTLE TRADE

Ontario auction sales this week saw weighted average price ranges for:

FED CATTLE	Volume	Price Range	Average	Top	Last Week Avg
Large Frame Steers +1250	71	130.32-148.07	140.47	152.50	135.23
Medium Frame Steers +1250	111	129.37-144.44	137.78	152.00	136.44
Large & Medium Frame Steers +1250	182	129.80-147.97	139.96	152.50	138.93
Large Frame Heifers +1000	97	133.89-152.36	144.59	156.50	141.25
Medium Frame Heifers +1000	136	136.47-147.79	143.01	157.50	135.32
Large & Medium Frame Heifers +1000	233	133.72-149.92	143.46	157.50	139.57
Fed steers, Dairy & Dairy Cross +1250	54	107.12-114.25	110.95	132.25	107.58
Fed heifers, Dairy & Dairy Cross +1000	110	71.91-107.06	93.37	115.00	92.31
Cows - All Weights	2,565	54.19-79.28	66.31	122.00	66.19
Bulls - All Weights	76	83.20-108.64	97.34	128.00	93.00

STOCKERS - Large and Medium Frame

STEERS	Volume	Price Range	Average	Top	Last Week Avg
1000+	461	165.47-184.04	170.93	190.00	179.18
900-999	317	170.36-186.96	177.38	194.50	184.10
800-899	151	164.41-186.02	178.43	194.00	179.92
700-799	124	165.94-197.82	183.22	220.00	194.16
600-699	242	194.97-233.87	216.78	256.00	213.68
500-599	267	194.39-244.63	226.73	260.00	230.65
400-499	97	177.23-240.88	216.22	257.00	225.10
-399	41	130.80-227.93	180.54	325.00	194.82
HEIFERS	Volume	Price Range	Average	Top	Last Week Avg
+900	177	129.73-163.42	148.35	182.50	154.65
800-899	172	141.37-168.70	158.88	179.25	164.79
700-799	107	130.36-169.72	155.34	183.75	155.01
600-699	204	144.93-186.90	169.16	221.50	176.95
500-599	194	149.43-188.00	171.57	211.79	184.71
400-499	111	150.79-194.38	173.10	219.00	171.25
300-399	32	149.30-179.44	164.02	190.00	156.53
-299	4	N/T	N/T	N/T	158.04

At Kawartha Lakes Co-op Auction Market: February 15, 2020 – 75 cows, 3 bulls, 36 veal, 33 stockers, 4 fed cattle

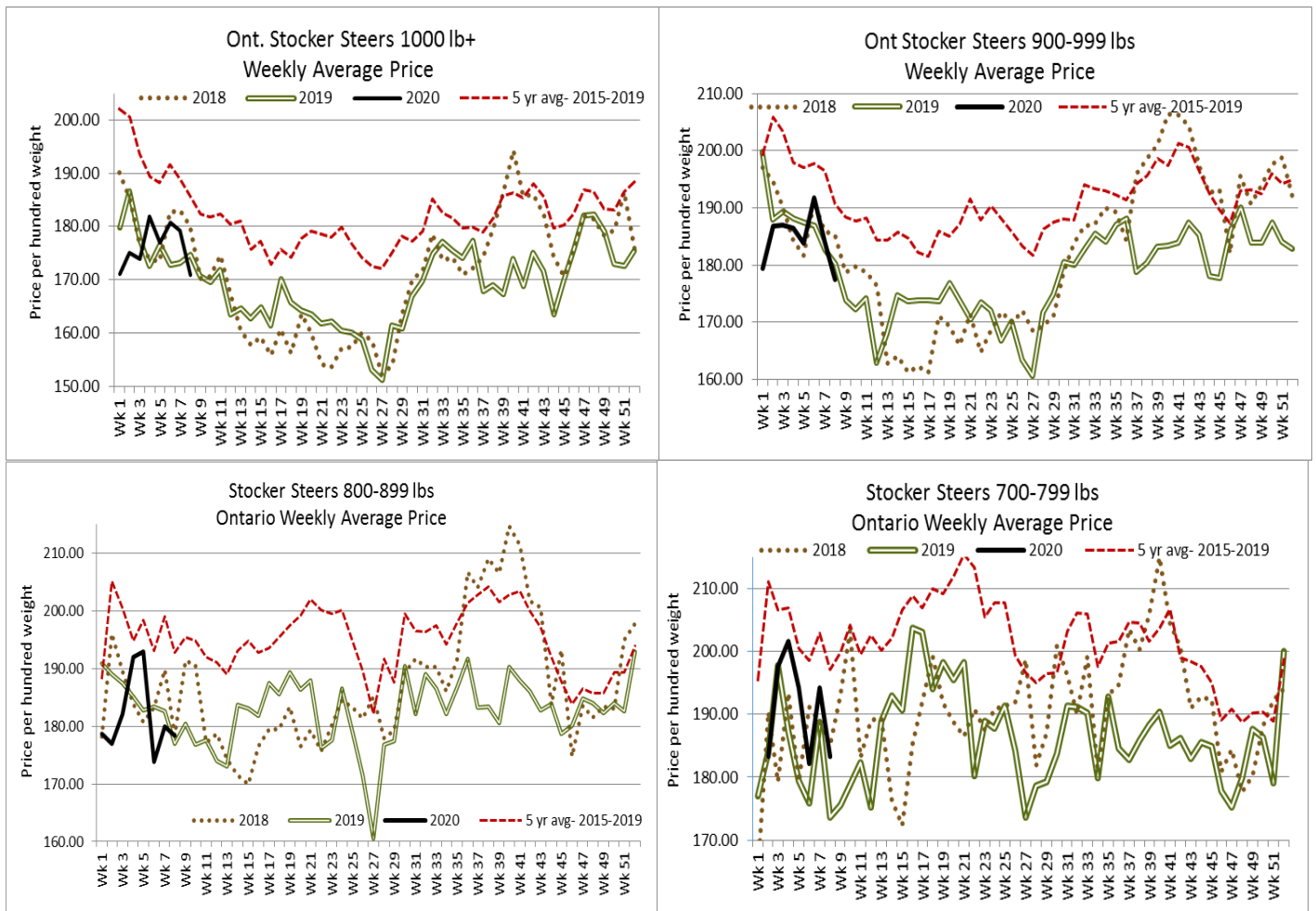
	Price Range	Average	Top
Cows	57.50-82.00	68.15	89.50
Veal 126-300 lbs	88.00-127.50	103.32	127.50

Denfield Livestock Exchange Inc., February 11, 2020: 153 Fed Cattle, 14 Veal, 3 Bulls, 94 Cows

	Price Range	Average	Top
Large & Medium Frame Fed Steers +1250 lbs	138.00-151.00	147.48	152.00
Large & Medium Frame Fed Heifers +1000 lbs	140.00-150.00	146.17	157.50
Cows	54.50-75.00	63.66	85.50
Veal over 600 lbs	117.00-129.00	124.50	129.00

At Aylmer Stockyards Inc.: February 12, 2020- 27 veal, 256 Cows, 56 fed cattle, 4 bulls, 32 stockers

	Price Range	Average	Top
Fed Heifers, Dairy & Dairy Cross	63.50-112.00	101.60	112.00
Cows	41.99-94.49	69.09	94.49
Veal over 600 lbs	102.00-138.99	127.09	138.99



ONTARIO STOCKER & FEEDER TRADE

Stocker sale at Brussels Livestock: February 14, 2020 – 892 Stockers

Steers	Price Range	Average	Top	Heifers	Price Range	Average	Top
1000+	164.50-180.50	171.86	180.50	900+	145.50-182.50	168.20	182.50
900-999	175.00-185.00	179.37	189.00	800-899	147.00-176.75	166.88	179.25
800-899	174.50-190.25	184.42	190.25	700-799	133.00-183.75	168.46	183.75
700-799	169.00-203.00	186.64	203.00	600-699	149.00-184.00	168.07	184.00
600-699	206.00-240.00	224.01	240.00	500-599	155.00-178.00	165.94	192.00
500-599	215.00-236.50	227.82	260.00	400-499	122.00-167.00	150.40	167.00
400-499	200.00-252.00	229.50	252.00	300-399	136.00-152.00	144.00	152.00

Stocker sale at: **Community Livestock Exchange: February 18, 2020 – 86 Stockers**

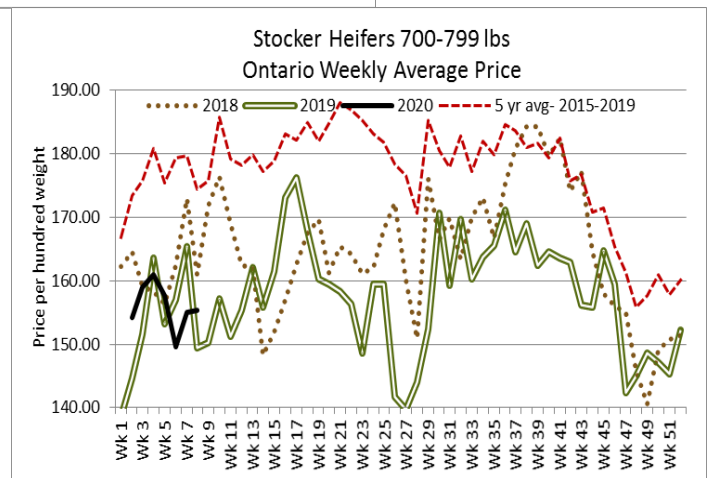
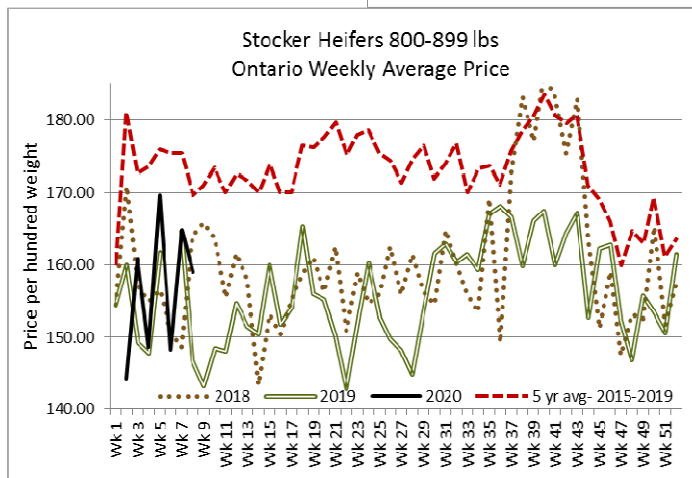
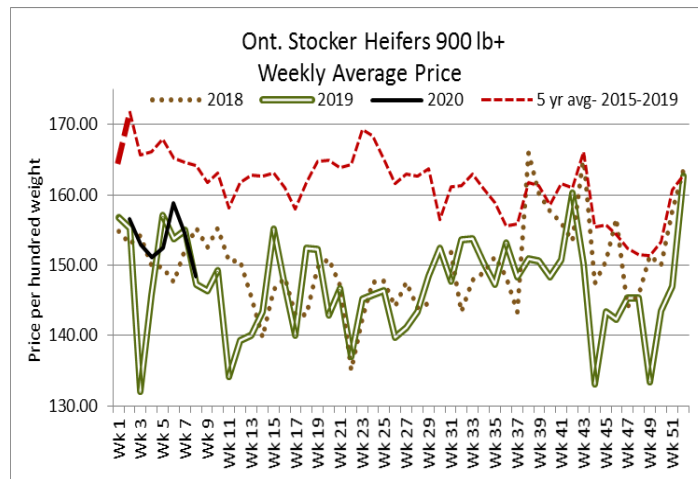
Steers	Price Range	Average	Top	Heifers	Price Range	Average	Top
600-699	162.50-220.50	209.69	220.50				
500-599	131.00-243.00	214.40	243.00				
400-499	152.49-245.00	211.29	245.00				

Stocker sale at: **Renfrew Pontiac Livestock: February 18, 2020 – 140 Stockers**

Steers	Price Range	Average	Top	Heifers	Price Range	Average	Top
800-899	120.99-176.00	158.09	176.00	600-699	125.00-188.99	175.00	188.99
600-699	132.49-210.00	192.10	210.00	500-599			
500-599	163.99-239.99	216.90	239.99	400-499			
400-499	187.99-250.00	222.69	250.00				

Stocker sale at **Ontario Livestock Exchange, February 12, 2020- 500 stockers**

Steers	Price Range	Average	Top	Heifers	Price Range	Average	Top
1000+	172.00-190.00	175.86	190.00	900+	151.00-174.50	169.14	174.50
900-999	176.00-194.50	182.07	194.50				
800-899	182.00-194.00	189.75	194.00				



Stocker sale at **Ontario Livestock Exchange: February 20, 2020 – 185 Stockers**

Steers	Price Range	Average	Top	Heifers	Price Range	Average	Top
600-699	197.00-234.00	213.07	234.00	600-699	145.00-175.00	162.92	175.00
500-599	192.50-225.00	211.25	225.00	500-599	115.00-192.50	147.00	192.50
400-499	107.50-222.50	192.08	222.50	400-499	155.00-175.00	160.00	175.00
3999-				300-399	167.50-185.00	174.36	185.00

Stocker sale at **Ontario Stockyards Inc: February 20, 2020 – 809** Stockers

Steers	Price Range	Average	Top	Heifers	Price Range	Average	Top
1000+	110.00-156.00	126.22	156.00	900+	74.00-90.00	75.61	111.00
900-999	125.00-173.00	153.23	173.00	800-899	130.00-152.50	142.07	155.00
800-899	157.00-188.00	178.93	189.00	700-799	137.50-168.00	153.31	168.00
700-799	175.00-203.00	190.92	212.00	600-699	155.00-193.00	174.84	221.50
600-699	205.00-241.00	222.74	256.00	500-599	155.00-194.00	177.93	207.50
500-599	215.00-260.00	242.30	260.00	400-499	155.00-207.50	180.40	219.00
400-499	205.00-257.00	239.31	257.00	300-399	135.00-182.50	158.70	190.00
399-	162.50-237.00	201.58	267.50				

LIVE CATTLE EXPORTS-ONTARIO

	Week ending Feb 1, 2020	Week ending Jan 25, 2020	Year to Date 2020
Total live slaughter cattle exported from Ontario to the U.S.	3,766	3,413	16,194
Steers & Heifers & Cows	3,468	3,148	14,617
Bulls	298	265	1,577

FEDERALLY INSPECTED CANADIAN PROCESSING

	Week Ending February 15, 2020	# of hd change from week ago	YTD	% Change (Week Ago)	% Change (Year Ago)
Grand Total	58,967	-229	395,002	-0%	+0%
Western Slaughter	46,187	+270	307,468	+1%	+2%
Eastern Slaughter	12,780	-499	87,534	-4%	-6%

AVERAGE CARCASS WEIGHTS – CANADA

	Steers	Heifers
February 15, 2020	913	843
February 8, 2020	910	837
February 16, 2019	918	842

USDA ESTIMATED CATTLE PROCESSING VOLUME

	Week Ending February 22, 2020	Previous Week	Year Ago
Grand Total	628,000	620,000	581,000

ALBERTA DIRECT TRADE

For the week ending February 20, 2020

Steers	Live FOB	150.75	Rail FOB	N/T
Heifers	Live FOB	N/T	Rail FOB	N/T

U.S. TRADE (U.S. funds)

For the week ending February 20, 2020

Choice and Select Steers and Heifers:	Live	117.00-122.00
	Rail	188.00-192.00

QUEBEC ELECTRONIC AUCTION MARKET (F.O.B. THE FEEDLOT)

	Price	Change from Last Week
For the week ending February 20, 2020	249.00	+1.87

CANADIAN BOXED BEEF CUT-OUT VALUES

Week Ending	AAA	AA
January 17, 2020	2.7270	2.6350

U.S. BOXED BEEF CUT-OUT VALUES (U.S. funds)

	Choice 600-900	Select 600-900
Current Five Day Average:	206.31	203.79

BEEF EXPORTS – CANADA

	United States <i>Jan 1- Dec 31/19</i>	<i>Change from last year YTD</i>	Mexico <i>Jan 1- Dec 31/19</i>	<i>Change from last year YTD</i>
Total	316,722 tonnes	+7% or +21,934 tonnes	16,530 tonnes	+7% or +1,093 tonnes
	Japan <i>Jan 1- Dec 31/19</i>	<i>Change from last year YTD</i>	China <i>Jan 1- Dec 31/19</i>	<i>Change from last year YTD</i>
Total	49,322 tonnes	+54% or +17,212 tonnes	12,052 tonnes	+17% or +1,752 tonnes

LIVE CATTLE – CANADA

IMPORTS		<i>Import % change from 2018 YTD</i>	EXPORTS		<i>Export % change from 2019 YTD</i>
<i>Jan 1- Dec 31/19</i>			<i>Jan 1- Feb 8/20</i>		
Pure bred	5,508	-7%	Slaughter steers & heifers & cows	57,405	+17%
Non-pure bred	269,076	+38%	Feeder cattle & calves	7,364	-48%
			Bulls	3,452	+10%

BEEF PRODUCTION – CANADA

	<i>Jan 1 – Feb 15/20</i>	<i>Last Year Same Time</i>	<i>% Change</i>
Fed	127,579 tonnes	126,085 tonnes	+1%
Non-fed	25,483 tonnes	29,288 tonnes	-13%

BEEF IMPORTS – CANADA

	<i>Jan 1 – Feb 1/20</i>	<i>Last Year Same Time</i>	<i>% Change</i>
United States	9,935 tonnes	10,526 tonnes	-6%
Non-CUSMA	1,753 tonnes	6,160 tonnes	-72%
EU-28 (beef/veal total)	730 tonnes	206 tonnes	+254%
Total	12,818 tonnes	17,518 tonnes	-27%

CHICAGO MERCANTILE EXCHANGE

Closing quotes on futures today were as follows:

Live Cattle		Feeder Cattle		Corn		Soybeans		Canadian \$	
Feb	119.72 -0.37	Mar	140.20 -0.60	Mar	3.770 -1.4	Mar	8.904 -2.2	Spot	75.70 +0.30
Apr	118.25 -0.90	Apr	142.10 -0.42	May	3.806 -2.0	May	8.990 -2.0	Mar	75.70 +0.31
Jun	110.27 -0.65	May	142.85 -0.72	Jul	3.834 -2.0	Jul	9.096 -1.2	Jun	75.70 +0.31
Aug	109.40 -0.45	Aug	149.67 -1.37	Sep	3.820 -2.0	Aug	9.130 -0.6	Sep	75.69 +0.30
Oct	113.27 -0.22	Sep	151.00 -1.35	Dec	3.860 -2.4	Sep	9.132 -0.2	Dec	75.68 +0.30
Dec	117.52 -0.25	Oct	151.80 -1.27	Mar	3.952 -2.6	Nov	9.174 +0.0	Mar	75.67 +0.30

Beef Farmers of Ontario, 130 Malcolm Road, Guelph, ON N1K 1B1 Phone: (519) 824-0334 Fax: (519) 824-9161 or email: markets@ontariobeef.com

UPCOMING FALL STOCKER AND FEEDER SALES

Feb 25 10:00 am	Keady Livestock Market	Regular Sale
Mar 10 10:00 am	Keady Livestock Market	Regular Sale
Mar 13 11:00 am	Community Livestock Exchange	Quinte Cattlemen'
Mar 21 11:00 am	Denfield Livestock Exchange	Stocker & Bred Cow, Cow/Calf Pair Sale
Mar 24 10:00 am	Keady Livestock Market	Regular Schedule Resumes
Mar 25 10:00 am	Kawartha Lakes Community Sale Barn	Special Stocker Sale

Comments for the week ending February 20, 2020

415 fed steers and heifers sold through auction markets this week up 37 head from last week and 131 more than the same time last year. Fed steers ranged from \$129.80-\$147.97 averaging \$139.96 up \$1.03 from last week, but \$4.19 below year ago prices. Heifers traded from \$133.72-\$149.92 averaging \$143.46 up \$3.89 from last week and \$14.37 stronger than this time last year. Auction markets reported trade as active at slightly higher prices, up \$1.00-\$2.00 cwt to start. By Wednesday, trade was barely steady on a medium offering and ended the week steady with quality considered.

The Ontario railgrade market was mostly \$251.00 for steers and \$250.00-\$251.00 dressed for heifers this week down \$3.00-\$3.50 respectively. A couple of deals early week were noted at \$254.00 delivered for spot delivery while the remainder of trade was for delivery in early March. Last year at this time there were not enough sales to establish a price report as one packer was not actively buying, however a few scattered deals were noted at \$257.00 dressed last year, which is up \$6.00 from this week's average price.

2,565 fed/cull cows sold through auction markets this week, down 240 head from last week but 265 more than the same week last year. Cows sold from \$54.19-\$79.28 averaging \$66.31 up \$0.12 from last week and \$12.14 above year ago prices. Auction markets reported a good demand with active trading at prices steady and strong, to slightly higher.

The Boxed Beef Report by Kevin Grier this week reports the market overview as: "Coronavirus is impacting global and local demand. It is also having logistical impacts on shipments to China. As such it is keeping proteins on the defensive. U.S. packers priced product to move and much of it was on offer in Canada. U.S. packers did not fight the market and worked to keep clean. Canadian packers were in better shape and were not forced to discount, but overall prices were impacted lower. Even with the coronavirus the overall market is fundamentally sound." For the spot Canadian market Kevin notes: "The holiday shortened week this week will keep packers more current. Overall Canadian product availability is limited as the big two are in good shape. Buyers needing spot orders will be hard put for most common items."

Much lighter receipts of 2,701 stocker and feeder cattle sold through auction markets this week, down 1,258 from last week, but 334 more than last year at this time. Auction markets reported trade early week as steady on the calves with the choice calves higher, while yearling heifers were steady and yearling steers barely steady. By mid-week the heavier cattle were under pressure with prices \$3.00-\$5.00 cwt lower. By Thursday, trade was reported as steady on the grass type calves with heavy and fleshier cattle trading barely steady. Actual average prices this week saw live steers from 400-500 lbs down \$8.88 from last week on average, 500-600 lbs down \$3.92, 600-700 lbs up \$3.10, 700-800 lbs down \$10.94, 800-900 lbs down \$1.49, 900-1000 lbs down \$6.72 and steers 1000 lbs plus averaged \$8.25 below last week's weighted average prices. Heifers from 300-400 lbs averaged \$7.49 stronger than last week, 400-500 lbs up \$1.85, 500-600 lbs down \$13.14, 600-700 lbs down \$7.79, 700-800 lbs up \$0.33, 800-900 lbs down \$5.91 and heifers 900 lbs and over were down \$6.30 from last week's weighted average prices.

The Quebec electronic market this week sold at \$249.00 dressed, up \$1.87 from last week on average.

Alberta direct trade this week saw a few deals reported at \$150.75 live on a picked up basis which is steady to last week, otherwise the market was untested. Bids have been reported at \$253.00-\$255.00 delivered on a dressed basis but Canfax notes that no selling interest developed. Canfax reports: "limited trade developed but the market tone is generally steady with the previous week. Dressed bids of 254.00 delivered were reported yesterday with no selling interest. Packers still remain comfortably bought out in front. Buyers were indicating cattle that they bought this week would not be picked up until the middle of March. Packers have worked through a lot of their February contract cattle and grid volumes are also on the decline."

The US cash cattle trade for the week ending February 14th, developed early with trade surfacing by Tuesday. Trade was light to moderate in volume with prices \$2.00-\$3.00 cwt lower. The USDA Mandatory Price Report listed live sales for the week ranging from \$117.00-\$120.50 with steers averaging \$118.90 down \$2.15 from the previous week, while heifers averaged \$119.03 down \$1.95 on average. On the rail trade ranged from \$188.00-\$192.00 dressed with steers averaging \$190.27 and heifers \$190.09 both down \$2.91 from the previous week on average.

This week, on Monday, a light test was noted in Iowa at \$119.00 live and \$190.00-\$191.00 dressed which is steady, but not enough to establish a market. On Wednesday, at the Fed Cattle Exchange online auction there were bids of \$119.75 on one lot, but the seller passed, while the other two lots received no bids. On Wednesday the cash market was steady to \$1.00 higher on average from the week before, with sales from \$117.00-\$120.00 live, majority at \$119.00-\$120.00, with a few deals at \$190.00-\$191.00 dressed in the north which is steady to \$1.00 higher, but volumes were extremely light in the north. Thursday, moderate trade developed in the north at \$117.00-\$122.00 live, mostly \$119.00-\$120.00 which is steady to \$1.00 higher, while dressed deals were reported from \$188.00-\$192.00 dressed, mostly \$190.00 dressed, which is fully steady to last week. At time of reporting, a couple of bids in Iowa are noted at \$119.00 but no sales have taken place and it appears that business for the week is completed.