



Weekly Market Information Report for the week ending Thursday February 24, 2022

The following information is collected from various sources and disseminated by Beef Farmers of Ontario.

ONTARIO DIRECT TO PACKER RAILGRADE CATTLE TRADE

Prices are on a carcass weight basis before grade and weight discounts. Weekly Range:

A Grade Steers	290.00
A Grade Heifers	289.00-290.00

ONTARIO LIVE CATTLE TRADE

Ontario auction sales this week saw weighted average price ranges for:

FED CATTLE	Volume	Price Range	Average	Top	Last Week Avg
Large Frame Steers +1250	38	158.80-167.58	162.04	175.00	165.18
Medium Frame Steers +1250	78	159.96-173.03	166.49	184.50	163.44
Large & Medium Frame Steers +1250	116	157.95-171.11	165.31	184.50	165.89
Large Frame Heifers +1000	45	154.80-175.79	169.32	184.00	172.21
Medium Frame Heifers +1000	95	153.70-171.89	164.31	189.50	161.46
Large & Medium Frame Heifers +1000	140	154.02-175.32	166.85	189.50	168.90
Fed steers, Dairy & Dairy Cross +1250	65	120.86-144.18	134.76	151.00	121.70
Fed heifers, Dairy & Dairy Cross +1000	94	92.60-133.30	114.40	144.00	112.58
Cows - All Weights	2,252	66.57-97.56	80.65	147.00	80.84
Bulls - All Weights	72	96.45-120.22	107.49	137.00	104.46

STOCKERS - Large and Medium Frame

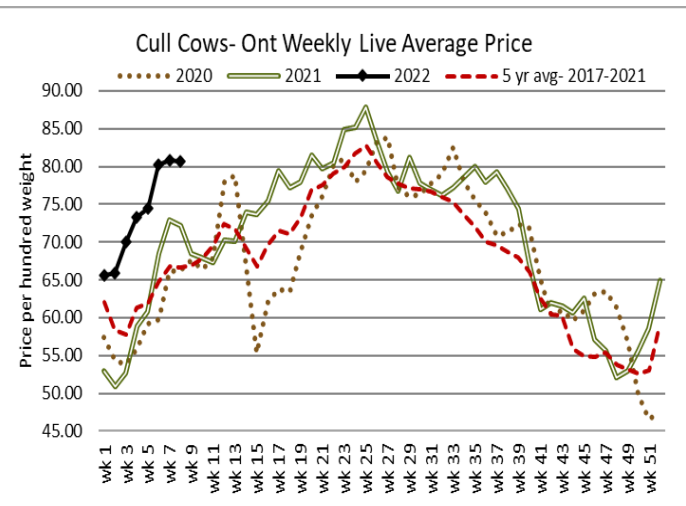
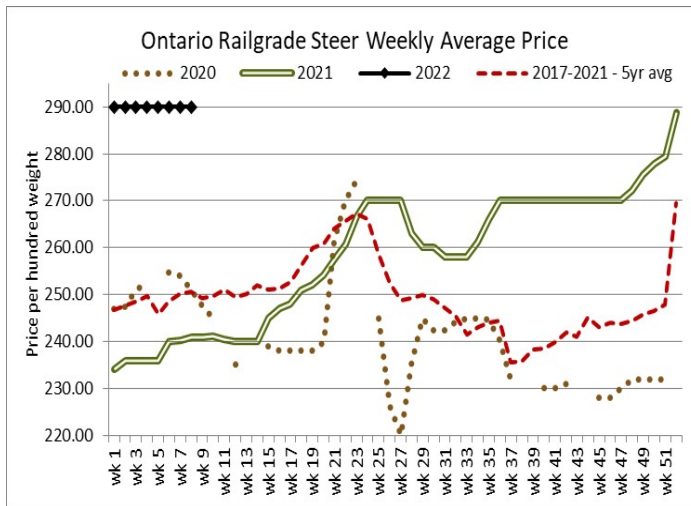
STEERS	Volume	Price Range	Average	Top	Last Week Avg
1000+	323	173.07-194.82	184.32	201.50	189.02
900-999	403	186.60-202.52	195.40	210.25	206.45
800-899	329	175.77-204.70	194.35	221.00	187.36
700-799	374	190.54-214.64	204.76	231.00	205.17
600-699	271	191.93-231.36	212.09	248.00	212.87
500-599	139	184.41-242.59	219.72	257.50	227.08
400-499	76	217.80-254.01	237.34	284.00	229.84
-399	35	211.74-264.75	241.97	380.00	182.86

STOCKERS - Large and Medium Frame

HEIFERS	Volume	Price Range	Average	Top	Last Week Avg
+900	171	151.75-178.50	167.13	192.75	170.57
800-899	207	173.03-191.32	184.30	206.00	186.96
700-799	210	168.20-191.39	181.58	210.00	175.26
600-699	230	155.25-200.51	182.08	221.50	188.58
500-599	225	162.25-209.48	186.83	231.00	195.70
400-499	81	169.25-205.51	188.83	237.50	188.34
300-399	22	137.59-194.07	172.25	224.00	161.05
-299	2	N/T	N/T	N/T	N/T

At Kawartha Lakes Community Sale Barn, February 19, 2021 –3 fed cattle, 151 cows, 3 bulls, 18 veal, 13 stockers

	Price Range	Avg.	Top
Cows	75.00-107.00	84.90	122.00
Veal 600 lbs +	131.00-148.00	137.46	148.00
Veal -125 lbs	55.00-185.00	97.35	185.00

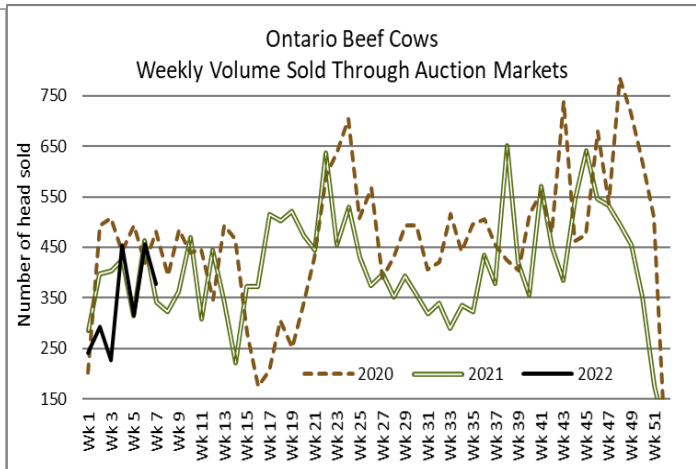
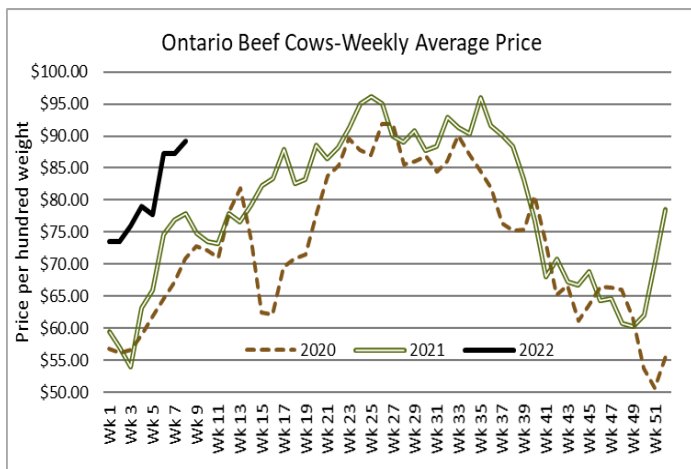


Denfield Livestock Exchange Inc., February 22, 2022: 106 Fed Cattle, 25 Veal, 87 Cows, 21 stockers, 5 bulls

	Price Range	Average	Top
Large & Medium Frame Fed Steers +1250 lbs	164.50-175.00	170.58	176.00
Large & Medium Frame Fed Heifers +1000 lbs	169.00-178.75	174.16	189.50
Cows	60.00-87.00	75.36	100.00
Veal calves 600 lbs +	149.00-163.50	157.15	164.00

At Aylmer Stockyards Inc.: February 23, 2022 – 15 veal, 222 Cows, 59 fed cattle, 34 stockers, 4 bulls

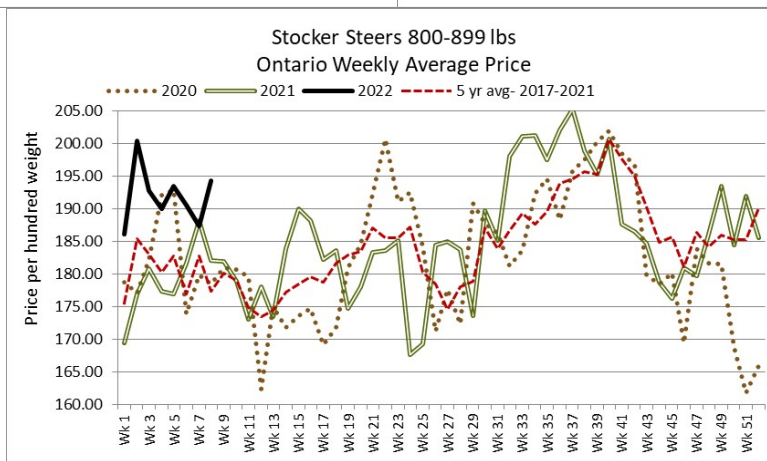
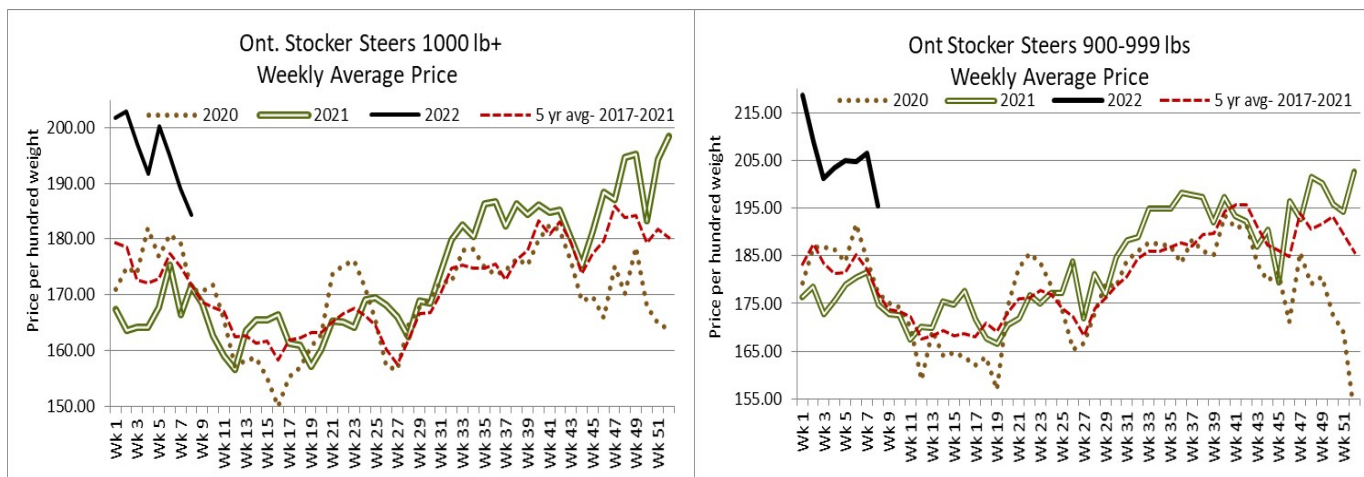
	Price Range	Average	Top
Fed Steers, Dairy & Dairy Cross 1250 lbs +	125.00-137.00	134.00	137.00
Fed Heifers, Dairy & Dairy Cross 1000 lbs +	81.99-137.00	118.70	137.00
Cows	55.00-114.99	83.99	129.49
Veal over 600 lbs	137.00-157.00	148.39	157.00



ONTARIO STOCKER & FEEDER TRADE

Stocker sale at **Brussels Livestock: February 18, 2021 – 816 Stockers**

Steers	Price Range	Average	Top	Heifers	Price Range	Average	Top
1000+	173.50-201.50	188.16	201.50	900+	160.00-192.75	178.90	192.72
900-999	192.00-210.25	204.03	210.25	800-899	184.00-196.00	191.42	196.50
800-899	189.50-209.75	202.05	214.00	700-799	179.00-196.50	191.31	196.50
700-799	199.00-226.00	214.94	226.00	600-699	153.00-204.00	185.39	209.00
600-699	213.00-234.00	224.10	242.00	500-599	193.50-212.00	198.80	212.00
500-599	190.00-238.00	215.43	240.00	400-499	170.00-224.00	202.56	224.00
400-499	232.00-270.00	255.17	284.00	300-399	151.00-187.50	175.33	187.50



Stocker sale at: **Community Livestock Exchange: February 22, 2022 – 132 Stockers**

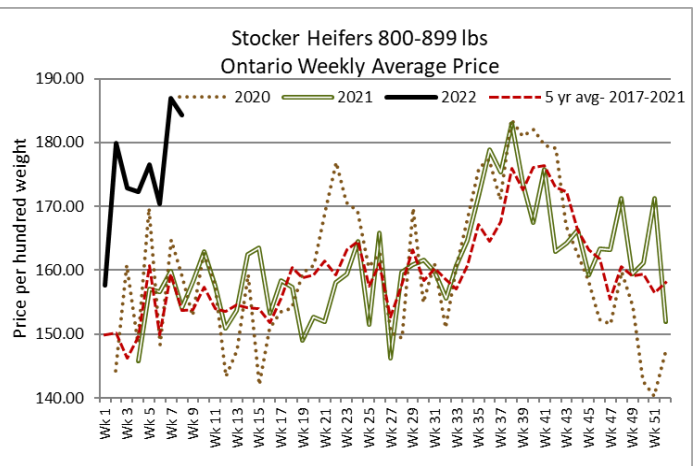
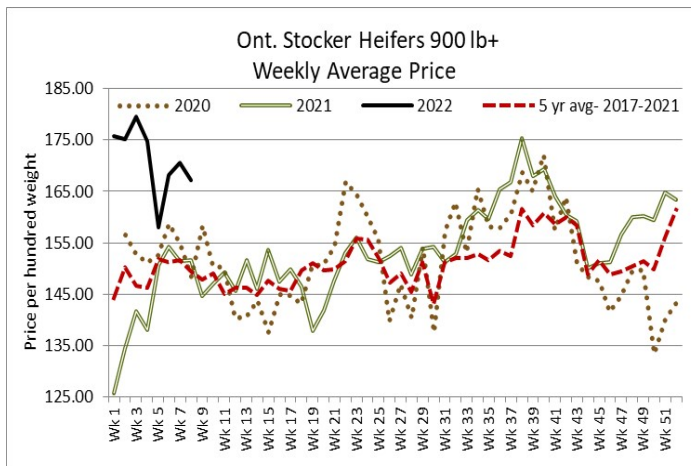
Steers	Price Range	Average	Top	Heifers	Price Range	Average	Top
600-699	187.50-220.99	212.19	220.99	600-699	110.00-176.00	157.00	176.00
500-599	125.00-252.49	210.70	252.49	500-599	131.00-198.99	178.20	198.99
400-499	200.00-250.00	232.29	250.00	400-499	155.00-189.99	173.90	189.99

Stocker sale at: **Keady Livestock Market: February 22, 2022 – 467 Stockers**

Steers	Price Range	Average	Top	Heifers	Price Range	Average	Top
1000+	186.00-193.00	188.02	193.00	800-899	174.00-206.00	196.76	206.00
700-799	205.00-221.00	214.55	221.00	600-699	172.50-218.00	188.26	218.00
600-699	208.00-231.00	222.41	231.00	500-599	185.00-220.00	215.31	220.00
500-599	194.00-213.00	201.60	242.50				
400-499	238.00-241.00	239.20	241.00				

Stocker sale at: **Renfrew Pontiac Livestock: February 22, 2021 – 166 Stockers**

Steers	Price Range	Average	Top	Heifers	Price Range	Average	Top
800-899	134.00-202.49	190.30	202.49	700-799	140.99-172.99	165.10	172.99
700-799	175.00-200.99	186.60	200.99	600-699	135.00-200.00	159.89	200.00
600-699	181.00-239.99	213.79	239.99	500-599	145.99-214.00	180.40	214.00
500-599	208.99-250.99	240.09	250.99	400-499	143.99-210.00	175.20	210.00
400-499	239.00-258.00	250.19	258.00	300-399	112.50-204.00	166.10	204.00
399-	237.50-254.99	246.49	254.99				



Stocker sale at **Ontario Livestock Exchange, February 23, 2022 - 464 stockers**

Steers	Price Range	Average	Top	Heifers	Price Range	Average	Top
1000+	178.00-200.50	190.47	200.50	900+	N/T		
900-999	184.00-201.50	193.41	201.50				
800-899	172.00-196.00	185.27	196.00				

Stocker sale at **Vankleek Hill Livestock Exchange, February 23, 2022 - 481 stockers**

Steers	Price Range	Average	Top	Heifers	Price Range	Average	Top
800-899	148.00-204.00	181.72	204.00	800-899	140.00-160.00	150.36	160.00
700-799	174.00-204.00	187.59	204.00	700-799	136.00-160.00	147.142	160.00
600-699	176.00-227.00	201.93	227.00	600-699	138.00-173.00	152.08	173.00
500-599	188.00-233.00	212.53	233.00	500-599	129.00-185.00	165.80	185.00

Stocker sale at **Ontario Livestock Exchange: February 24, 2022 – 169 Stockers**

Steers	Price Range	Average	Top	Heifers	Price Range	Average	Top
800-899	150.00-190.00	172.28	190.00	800-899	135.00-162.50	144.65	167.50
700-799	147.50-197.50	176.46	197.50	700-799	137.00-170.00	155.96	170.00
600-699	162.50-200.00	182.32	200.00	600-699	160.00-180.00	172.83	180.00
500-599	135.00-187.50	151.79	187.50	500-599	130.00-182.50	145.97	187.50

Stocker sale at **Ontario Stockyards Inc, February 24, 2022- 590 stockers**

Steers	Price Range	Average	Top	Heifers	Price Range	Average	Top
800-899	159.00-194.00	183.85	194.00	900+	149.00-151.00	150.55	151.00
700-799	190.00-208.00	202.40	213.00	800-899	157.50-176.00	167.33	176.00
600-699	190.00-234.00	210.02	246.00	700-799	174.00-208.00	190.53	208.00
500-599	215.00-257.50	238.95	257.50	600-699	164.00-216.00	198.03	221.50
400-499	222.50-270.00	242.66	270.00	500-599	170.00-226.00	192.61	231.00
399-	200.00-260.00	231.86	260.00	400-499	171.00-211.00	190.87	237.50

WEEKLY LIVE CATTLE EXPORTS-ONTARIO

	Week ending Jan 29, 2022	Week ending Jan 22, 2022	Year to Date
Total live slaughter cattle exported from Ontario to the U.S.	2,299	2,720	9,581
Steers & Heifers & Cows	2,234	2,563	9,202
Bulls	65	157	379

FEDERALLY INSPECTED CANADIAN PROCESSING

	Week Ending Feb 19, 2022	# of hd change from week ago	YTD	% Change (Week Ago)	% Change (Year Ago)
Grand Total	64,185	-1,223	436,804	-2%	+2%
Western Slaughter	49,735	-1,357	341,691	-3%	+2%
Eastern Slaughter	14,450	+134	95,113	+1%	+2%

AVERAGE CARCASS WEIGHTS – CANADA

	Steers	Heifers
Feb 19, 2022	928	868
Feb 12, 2022	933	835
Feb 20, 2021	906	862

USDA ESTIMATED CATTLE PROCESSING VOLUME

	Week Ending Feb 26, 2022	Previous Week	Year Ago
Grand Total	647,000	660,000	665,000

QUEBEC ELECTRONIC AUCTION MARKET (F.O.B. THE FEEDLOT)

	Price	Change from Last Week
For the week ending February 24, 2022	292.25-293.50	+1.86

ALBERTA DIRECT TRADE

Alberta's direct trade: for the week ending February 24, 2022

Steers	Live FOB	159.00-161.00	Rail FOB	270.50-27.50
Heifers	Live FOB	159.50-161.00	Rail FOB	269.00-273.50

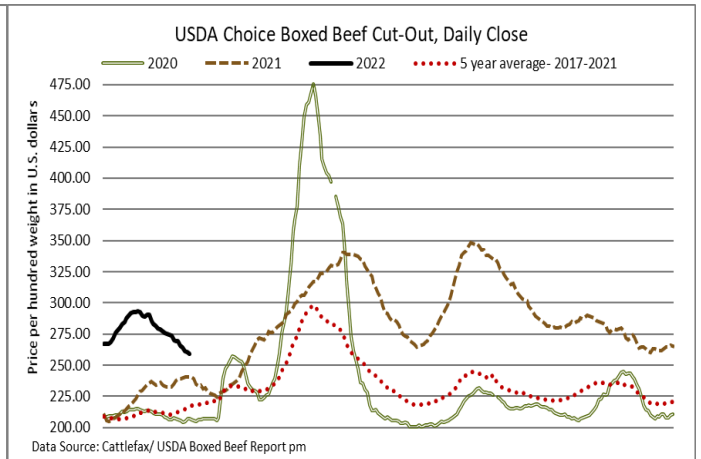
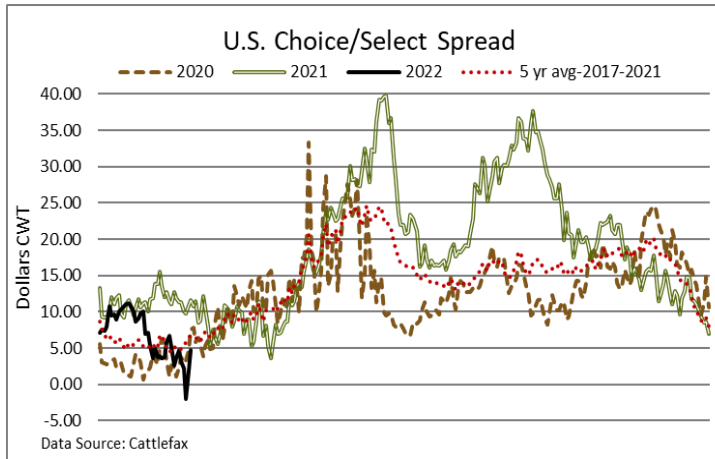
U.S. TRADE (U.S. funds)

The U.S. cash cattle trade: for the week ending February 24, 2022

Choice and Select Steers and Heifers:	Live	138.00-146.50
	Rail	224.00-229.00

U.S. BOXED BEEF CUT-OUT VALUES (U.S. funds)

	Choice 600-900	Select 600-900
Current Five Day Average	262.34	260.32



BEEF EXPORTS – CANADA

	United States	Change from last year YTD	Mexico	Change from last year YTD
	Jan 1- Dec 31/21		Jan 1- Dec 31/21	
Total	535,953 tonnes	+14% or +44,393 tonnes	23,396 tonnes	+54% or +8,241 tonnes
	Japan	Change from last year YTD	China	Change from last year YTD
	Jan 1- Dec 31/21		Jan 1- Dec 31/21	
Total	59,482 tonnes	+32% or +14,335 tonnes	20,045 tonnes	+92% or +9,622 tonnes

LIVE CATTLE – CANADA

IMPORTS			Import % change from 2020 YTD	EXPORTS			Export % change from 2021 YTD
Jan 1- Jan 1- Dec 31/21				Jan 1- Jan 29/22			
Pure bred	15,924		-	Slaughter steers & heifers & cows	42,064		+11%
Non-pure bred	385,559		+41%	Feeder cattle & calves	13,838		+233%
				Bulls	1,462		-30%

BEEF PRODUCTION – CANADA

	Jan 1 – Feb 12/22	Last Year Same Time	% Change
Fed	125,813 tonnes	128,954 tonnes	-2%
Non-fed	20,577 tonnes	19,596 tonnes	+5%

BEEF IMPORTS – CANADA

	Jan 1 – Feb 12/22	Last Year Same Time	% Change
United States	10,251 tonnes	12,767 tonnes	-20%
Non-CUSMA	2,976 tonnes	7,475 tonnes	-60%
EU-28 (beef/veal total)	1,090 tonnes	1,645 tonnes	-34%
Total	16,079 tonnes	22,662 tonnes	-29%

CHICAGO MERCANTILE EXCHANGE

Closing quotes on futures today were as follows:

Live Cattle			Feeder Cattle			Corn			Soybeans			Canadian \$		
Feb	139.27	-1.25	Mar	160.02	+0.92	Mar	6.594	-35.4	Mar	15.902	-71.2	Spot	78.65	+0.62
Apr	141.92	-0.37	Apr	164.75	+0.95	May	6.556	-34.4	May	15.844	-69.4	Mar	78.65	+0.63
Jun	138.30	-0.30	May	170.60	+0.87	Jul	6.440	-34.4	Jul	15.732	-63.4	Jun	78.65	+0.64
Aug	137.42	-0.25	Aug	182.87	+1.15	Sep	5.942	-26.4	Aug	15.362	-56.0	Sep	78.62	+0.64
Oct	143.07	-0.17	Sep	184.80	+1.10	Dec	5.796	-25.0	Sep	14.580	-44.4	Dec	78.59	+0.65
Dec	147.57	-0.12	Oct	186.07	+1.00	Mar	5.866	-24.2	Nov	14.150	-36.4	Mar	78.57	+0.67

Beef Farmers of Ontario, 130 Malcolm Road, Guelph, ON N1K 1B1 Phone: (519) 824-0334 Fax: (519) 824-9161 or email: markets@ontariobeef.com

ONTARIO STOCKER & FEEDER TRADE SPECIAL FALL SALES

Feb 26	1:00 pm	Kawartha Lakes Community Sales Barn	Bred Cow Sale
Mar 11	11:00 am	Community Livestock Exchange	Quinte Cattlemen's Stocker Sale
Mar 12	12:00 pm	Ontario Stockyards Inc	Bred Cow Sale
Mar 16	10:00 am	Kawartha Lakes Community Sales Barn	Special Stocker Sale
Mar 22	11:00 am	Ontario Stockyards Inc	All Vaccinated Stocker Sale
Mar 26	11:00 am	Denfield Livestock Exchange	Vaccinated Calves & Yearlings

Comments for the week ending February 24th

There were 256 fed steers and heifers sold through auction markets this week down 40 from last week and 139 fewer than last year at this time. Fed steers sold from \$157.95-\$171.11 averaging \$165.31 down \$0.58 from last week but \$29.23 above year ago prices. Fed heifers ranged from \$154.02-\$175.32 averaging \$166.85 down \$2.05 from last week but \$28.62 stronger than last year at this time. Auction markets reported trade as steady to barely steady and ended the week firm.

The Ontario railgrade market held fully steady again this week with prices at \$290.00 dressed for steers and \$289.00-\$290.00 for heifers, mainly \$290.00. Delivery of the cattle sold ranged from the week of February 28th to March 7th by mid-week. Prices have been holding fully steady for the last eight weeks. This week's average price is \$49.00 cwt stronger than last year at this time.

Federally inspected processing volumes in Ontario as of the week ending February 19th totaled 85,518 head year-to-date, up 2.4% from the same time in 2021 and 5.8% more than in 2020. Of that 85,518 head, 63.6% were steers, 18.4% heifers and 18% were cows.

Lighter receipts of fed/cull cows sold through auction markets this week at 2,252 head, down 254 from last week and 784 fewer than the same time last year. Cows sold from \$66.57-\$97.56 averaging \$80.65 down \$0.19 from last week but \$8.46 above year ago prices. The volume of beef cows sold decreased again this week with prices averaging \$89.17 up \$1.95 over last week's average for beef cows. Auction markets reported trade as active with prices from steady to slightly easier to start. As the week progressed, trade was barely steady to \$2.00-\$3.00 stronger and by mid week, prices were reported as fully steady to strong.

3,098 stocker and feeder cattle sold through auction markets this week up 79 head from last week but 1,072 fewer than this time last year. Auction markets reported light weight cattle as steady to stronger with quality considered. Heavier weights were steady to barely steady and under pressure by mid-week. Actual average prices saw steers 400-500 lbs up \$7.50 from the previous week, 500-600 lbs down \$7.36, 600-700 lbs were down \$0.78, 700-800 lbs down \$0.41, 800-900 lbs up \$6.99, 900-1000 lbs down \$11.05 and steers 1000 lbs and over averaged \$4.70 easier than last week's weighted average prices. Heifers 400-500 lbs were up \$0.49, 500-600 lbs down \$8.87, 600-700 lbs down \$6.50, 700-800 lbs up \$6.32, 800-900 lbs down \$2.66 and heifers 900 lbs and over averaged \$3.44 easier than last week on average.

The Quebec electronic market this week ranged from \$292.25-\$293.50 dressed on a picked-up basis, up \$1.86 from the previous week's average prices.

Alberta direct trade was steady to \$1.00-\$2.00 cwt stronger this week with Canfax reporting prices from \$272.00-\$275.00 delivered on a dressed basis and from \$159.00-\$161.00 picked up on a live basis. Canfax notes "Competition on the cash market remains limited. Most of the cattle that traded this week were being scheduled for the week of March 28th delivery. Over the past couple of weeks Alberta fed prices have been trading at an 18.00-20.00 discount against the Nebraska market. Usually when basis levels get this weak, US packers come up and start buying cattle. That has not been the case this year."

The U.S. cash cattle trade for the week ending February 18th was light to moderate with majority of trade taking place Wednesday and Thursday. In the south trade ranged from \$138.00-\$141.00 live, mainly \$140.00 steady to slightly stronger. Business in the north ranged from \$139.00-\$144.00 live and \$220.00-\$227.00 dressed, mostly \$224.00 up around \$2.00 cwt. The overall weekly prices, reported by the USDA Mandatory Price Report saw live steers average \$140.48 up \$0.72 with heifers averaging \$140.40 up \$0.85. On the rail steers averaged \$224.04 up \$2.25 with heifers averaging \$224.08 up \$2.15.

This week the US cash cattle trade was fairly quiet Monday but Tuesday saw light trade from \$142.00-\$144.00 live, mainly \$143.00-\$144.00 and \$227.00 dressed, up \$1.00-\$2.00 from last week's average prices. Wednesday morning At the Central Stockyards online auction there were 2,037 head on offer, in 12 lots with delivery mainly for one to two weeks with a couple in three to four weeks. No sales developed as reserve bids from \$143.00-\$145.00 live were not met. Wednesday afternoon, light trade in the north developed at \$144.00 live and \$227.00 dressed up \$1.00-\$2.00 with delivery reported for the week of March 7th. Just a few deals in the south were noted at \$142.00 live, steady to \$1.00 higher than last week's southern trade. Thursday, light trade was reported from \$138.00-\$142.00 live in the south, mostly \$141.00-\$142.00 and \$143.00-\$146.50 live in the north with some dressed trade from \$224.00-\$229.00, mainly \$227.00 up \$1.00 from last week. Today, a couple of sales in the south were steady at \$142.00 live while the rest of the country was quiet. It appears that business for the week is completed.