



## Weekly Market Information Report for the week ending Thursday, April 28, 2022

The following information is collected from various sources and disseminated by Beef Farmers of Ontario.

### ONTARIO DIRECT TO PACKER RAILGRADE CATTLE TRADE

Prices are on a carcass weight basis before grade and weight discounts. Weekly Range:

<b>A Grade Steers</b>	295.00
<b>A Grade Heifers</b>	294.00-295.00

### ONTARIO LIVE CATTLE TRADE

Ontario auction sales this week saw weighted average price ranges for:

<b>FED CATTLE</b>	<b>Volume</b>	<b>Price Range</b>	<b>Average</b>	<b>Top</b>	<b>Last Week Avg</b>
<b>Large Frame Steers +1250</b>	117	164.21-180.36	173.11	190.00	174.10
<b>Medium Frame Steers +1250</b>	90	166.44-174.83	170.86	179.00	172.93
<b>Large &amp; Medium Frame Steers +1250</b>	207	163.05-177.96	172.01	190.00	173.78
<b>Large Frame Heifers +1000</b>	135	167.20-180.01	173.95	195.00	172.86
<b>Medium Frame Heifers +1000</b>	151	159.90-177.63	172.32	197.00	168.01
<b>Large &amp; Medium Frame Heifers +1000</b>	286	161.58-178.89	173.23	197.00	170.64
<b>Fed steers, Dairy &amp; Dairy Cross +1250</b>	67	129.66-144.80	138.17	150.00	136.52
<b>Fed heifers, Dairy &amp; Dairy Cross +1000</b>	133	105.41-143.26	125.39	158.00	125.87
<b>Cows - All Weights</b>	2,273	77.83-109.81	93.36	164.48	93.09
<b>Bulls - All Weights</b>	133	111.93-139.27	126.44	160.00	125.67

#### STOCKERS - Large and Medium Frame

<b>STEERS</b>	<b>Volume</b>	<b>Price Range</b>	<b>Average</b>	<b>Top</b>	<b>Last Week Avg</b>
<b>1000+</b>	989	169.10-190.67	180.23	196.00	181.03
<b>900-999</b>	713	172.63-196.75	186.47	248.00	189.46
<b>800-899</b>	1,068	176.22-209.83	198.28	222.00	197.81
<b>700-799</b>	1,282	187.16-234.86	218.61	260.00	211.85
<b>600-699</b>	891	192.96-250.56	229.17	272.00	221.38
<b>500-599</b>	519	193.65-255.40	231.85	279.50	225.51
<b>400-499</b>	180	182.20-253.31	224.69	282.50	232.10
<b>-399</b>	38	186.43-262.34	231.18	370.00	204.60

#### STOCKERS - Large and Medium Frame

<b>HEIFERS</b>	<b>Volume</b>	<b>Price Range</b>	<b>Average</b>	<b>Top</b>	<b>Last Week Avg</b>
<b>+900</b>	541	152.00-175.14	167.42	192.25	152.31
<b>800-899</b>	666	163.83-184.82	175.96	200.00	154.95
<b>700-799</b>	955	155.67-191.70	180.46	206.00	173.46
<b>600-699</b>	1,218	146.73-209.37	185.95	227.00	179.22
<b>500-599</b>	487	146.71-209.57	186.86	241.00	184.27
<b>400-499</b>	214	153.59-214.98	188.47	275.00	188.05
<b>300-399</b>	51	143.53-203.76	174.91	257.50	197.56
<b>-299</b>	6	166.67-182.92	172.08	225.00	159.00

At Kawartha Lakes Community Sale Barn: April 23, 2022 – 224 cows, 10 bulls, 40 veal, 30 stockers, 25 Fed Cattle

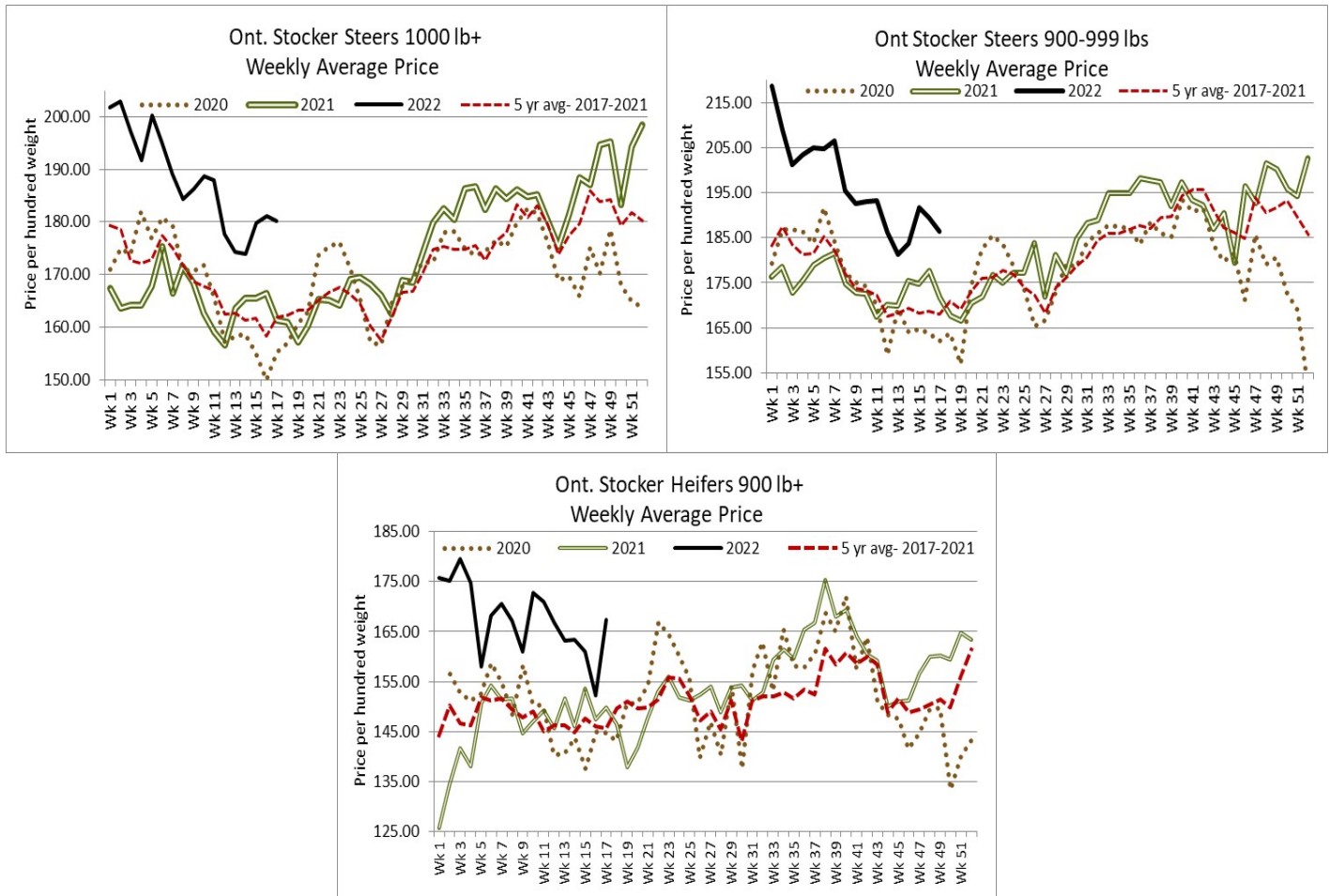
	<b>Price Range</b>	<b>Avg.</b>	<b>Top</b>
<b>Cows</b>	87.00-112.00	95.53	124.00
<b>Bulls over 1600 lbs</b>	123.00-146.00	130.28	146.00
<b>Veal 600 lbs +</b>	127.00-170.00	137.00	170.00
<b>Veal 125 lbs or less</b>	150.00-325.00	212.64	325.00

**Denfield Livestock Exchange Inc., April 26, 2022: 201 Fed Cattle, 29 Veal, 66 Cows, 6 bulls, 19 stockers**

	Price Range	Average	Top
Large & Medium Frame Fed Steers +1250 lbs	162.25-173.25	168.95	189.50
Large & Medium Frame Fed Heifers +1000 lbs	167.50-181.75	177.09	197.00
Cows	85.50-105.50	95.93	120.00
Veal calves 600 lbs +	140.00-158.00	151.48	158.00

**At Aylmer Stockyards Inc.: April 27, 2022 – 8 veal, 163 Cows, 38 fed cattle, 7 bulls**

	Price Range	Average	Top
Fed Heifers, Dairy & Dairy Cross 1000 lbs +	103.00-158.00	131.09	158.00
Cows	59.99-131.00	96.29	131.00
Veal over 600 lbs	134.00-153.00	140.70	153.00



**ONTARIO STOCKER & FEEDER TRADE**

**Stocker sale at Brussels Livestock: April 22, 2022 – 1,621 Stockers**

Steers	Price Range	Average	Top	Heifers	Price Range	Average	Top
1000+	156.00-188.75	177.48	188.75	900+	132.00-165.00	152.53	182.50
900-999	170.50-199.50	187.02	204.00	800-899	149.75-185.00	168.95	185.00
800-899	165.00-216.25	199.87	216.25	700-799	158.00-190.50	176.23	190.50
700-799	184.50-234.00	211.39	234.00	600-699	172.50-204.50	193.62	220.00
600-699	174.00-243.00	217.97	246.50	500-599	133.00-225.25	190.35	225.25
500-599	201.00-251.00	229.58	255.00	400-499	120.00-210.00	174.24	210.00
400-499	170.00-260.00	227.46	260.00				
399-	177.50-186.00	249.29	286.00				

Stocker sale at: **Community Livestock Exchange: April 26, 2022 – 140** Stockers

<i>Steers</i>	<i>Price Range</i>	<i>Average</i>	<i>Top</i>	<i>Heifers</i>	<i>Price Range</i>	<i>Average</i>	<i>Top</i>
<b>800-899</b>	131.00-190.9	180.69	190.99	<b>600-699</b>	132.49-189.99	158.89	189.99
<b>700-799</b>	137.50-214.00	182.20	214.00	<b>500-599</b>	114.99-196.99	166.39	196.99
<b>600-699</b>	142.50-220.00	183.40	220.00	<b>400-499</b>	119.99-212.50	166.10	212.50
<b>500-599</b>	142.50-239.99	199.30	239.99				
<b>400-499</b>	169.99-229.99	206.49	229.99				

Stocker sale at: **Keady Livestock Market: April 26, 2022 – 690** Stockers

<i>Steers</i>	<i>Price Range</i>	<i>Average</i>	<i>Top</i>	<i>Heifers</i>	<i>Price Range</i>	<i>Average</i>	<i>Top</i>
<b>1000+</b>	164.00-181.00	170.77	181.00	<b>900+</b>	160.00-174.00	167.14	174.00
<b>900-999</b>	188.00-197.50	192.46	197.50	<b>800-899</b>	168.00-195.00	183.83	195.00
<b>800-899</b>	203.50-218.00	211.75	218.00	<b>700-799</b>	191.00-206.00	196.16	206.00
<b>700-799</b>	230.00-248.50	239.20	248.50	<b>600-699</b>	197.50-225.00	211.51	225.00
<b>600-699</b>	231.00-254.00	244.33	263.00	<b>500-599</b>	205.00-235.00	223.05	235.00
<b>500-599</b>	240.00-269.00	255.00	269.00	<b>400-499</b>	237.00-243.00	241.69	275.00
<b>400-499</b>	225.00-240.00	232.50	240.00	<b>300-399</b>	200.00-257.50	220.30	257.50

Stocker sale at **Ontario Livestock Exchange, April 27, 2022 - 840** stockers

<i>Steers</i>	<i>Price Range</i>	<i>Average</i>	<i>Top</i>	<i>Heifers</i>	<i>Price Range</i>	<i>Average</i>	<i>Top</i>
<b>1000+</b>	176.50-196.00	184.82	196.00	<b>900+</b>	176.00-176.50	176.40	176.50
<b>900-999</b>	174.00-195.00	184.30	195.00				
<b>800-899</b>	211.00-222.00	213.74	222.00				
<b>600-699</b>	180.00-220.00	213.33	220.00				

Stocker sale at **Ontario Livestock Exchange: April 28, 2022 – 357** Stockers

<i>Steers</i>	<i>Price Range</i>	<i>Average</i>	<i>Top</i>	<i>Heifers</i>	<i>Price Range</i>	<i>Average</i>	<i>Top</i>
<b>800-899</b>	135.00-193.00	176.17	202.50	<b>900+</b>	137.50-175.00	165.65	175.00
<b>700-799</b>	152.50-228.00	186.40	228.00	<b>800-899</b>	137.50-162.00	151.32	184.00
<b>600-699</b>	175.00-226.00	203.62	226.00	<b>700-799</b>	125.00-198.00	161.25	198.00
<b>500-599</b>	160.00-217.50	186.11	225.00	<b>600-699</b>	126.00-196.00	168.71	196.00
<b>400-499</b>	170.00-225.00	197.73	225.00	<b>500-599</b>	105.00-167.50	140.72	215.00
<b>399-</b>	170.00-240.00	205.00	240.00	<b>400-499</b>	152.50-190.0	172.19	190.00

Stocker sale at **Ontario Stockyards Inc, April 28, 2022- 512** stockers

<i>Steers</i>	<i>Price Range</i>	<i>Average</i>	<i>Top</i>	<i>Heifers</i>	<i>Price Range</i>	<i>Average</i>	<i>Top</i>
<b>1000+</b>	105.00-180.00	157.73	180.00	<b>900+</b>	137.50-164.00	148.10	164.00
<b>900-999</b>	126.00-194.00	172.44	194.00	<b>800-899</b>	160.00-167.50	165.98	167.50
<b>800-899</b>	169.00-195.00	184.22	202.00	<b>700-799</b>	140.00-180.00	163.55	190.00
<b>700-799</b>	188.00-220.00	207.69	220.00	<b>600-699</b>	154.00-192.50	177.79	211.00
<b>600-699</b>	215.00-256.00	236.64	256.00	<b>500-599</b>	158.00-232.00	196.29	232.00
<b>500-599</b>	230.00-260.00	246.43	265.00	<b>400-499</b>	127.00-200.00	176.70	217.50
<b>400-499</b>	232.50-277.50	253.42	277.50	<b>300-399</b>	130.00-195.00	153.50	195.00

Stocker sale at: **Renfrew Pontiac Livestock: April 26, 2021 – 217** Stockers

<i>Steers</i>	<i>Price Range</i>	<i>Average</i>	<i>Top</i>	<i>Heifers</i>	<i>Price Range</i>	<i>Average</i>	<i>Top</i>
<b>700-799</b>	150.00-206.00	198.59	206.00	<b>700-799</b>	134.00-170.99	160.00	170.99
<b>600-699</b>	170.99-239.99	214.80	239.99	<b>600-699</b>	132.49-197.50	180.89	197.50
<b>500-599</b>	136.00-241.99	220.80	241.99	<b>500-599</b>	139.99-198.99	188.19	198.99
<b>400-499</b>				<b>400-499</b>	160.00-208.00	192.30	208.00

## ONTARIO STOCKER & FEEDER TRADE SPECIAL SPRING SALE

Stocker sale at **Keady Livestock Market: April 22, 2022 – 1,139** Stockers

<b>Steers</b>	<b>Price Range</b>	<b>Average</b>	<b>Top</b>	<b>Heifers</b>	<b>Price Range</b>	<b>Average</b>	<b>Top</b>
<b>1000+</b>	182.00-189.00	187.03	189.00	<b>900+</b>	165.00-192.25	188.26	192.25
<b>900-999</b>	165.00-209.00	195.38	209.00	<b>800-899</b>	191.00-200.00	193.97	200.00
<b>800-899</b>	193.00-214.75	203.22	218.50	<b>700-799</b>	190.00-200.00	197.02	200.00
<b>700-799</b>	213.00-248.00	239.65	260.00	<b>600-699</b>	182.00-214.00	201.29	215.00
<b>600-699</b>	250.00-267.50	260.60	267.50				
<b>500-599</b>	240.00-262.00	250.69	262.00				

A good offering of quality grass weight cattle sold \$5.00-\$8.00 cwt higher.

Stocker sale at **Denfield Livestock Exchange: April 23, 2022 – 665** Stockers

<b>Steers</b>	<b>Price Range</b>	<b>Average</b>	<b>Top</b>	<b>Heifers</b>	<b>Price Range</b>	<b>Average</b>	<b>Top</b>
<b>1000+</b>	168.00-175.75	170.71	177.00	<b>900+</b>	145.00-172.00	166.27	172.00
<b>900-999</b>	179.00-195.50	183.47	195.50	<b>800-899</b>	171.00-192.50	186.29	192.50
<b>800-899</b>	169.00-212.00	197.65	212.00	<b>700-799</b>	175.00-197.00	189.23	197.00
<b>700-799</b>	190.00-231.00	215.28	231.00	<b>600-699</b>	180.00-210.00	193.88	216.00
<b>600-699</b>	195.00-248.00	228.96	248.00	<b>500-599</b>	167.50-207.50	192.33	241.00
<b>500-599</b>	204.00-258.00	228.26	28.00	<b>400-499</b>	192.00-234.00	217.55	234.00
<b>400-499</b>	210.00-270.00	246.65	270.00	<b>300-399</b>	175.00-200.00	186.00	200.00
<b>399-</b>	180.00-250.00	213.13	250.00				

Stocker sale at **Stratton-Rainy River Cattlemen's Sale: April 23, 2022 – 1,640** Stockers, **144** cows, **9** bulls

<b>Steers</b>	<b>Price Range</b>	<b>Average</b>	<b>Top</b>	<b>Heifers</b>	<b>Price Range</b>	<b>Average</b>	<b>Top</b>
<b>900-999</b>	101.49-171.99	141.90	171.99	<b>900+</b>	80.00-162.50	130.40	162.50
<b>800-899</b>	125.00-200.49	184.69	200.49	<b>800-899</b>	119.99-173.79	158.60	173.79
<b>700-799</b>	114.99-214.99	191.39	214.99	<b>700-799</b>	119.99-180.00	170.79	180.00
<b>600-699</b>	130.00-247.00	206.70	247.00	<b>600-699</b>	110.00-208.99	173.61	208.99
<b>500-599</b>	140.99-256.99	218.40	256.99	<b>500-599</b>	110.00-194.99	174.59	194.99
<b>400-499</b>	162.99-247.50	208.59	247.50	<b>400-499</b>	160.00-208.99	184.69	208.99
<b>Cows</b>	59.99-112.99	95.19	112.99	<b>Bulls 1600 lbs-</b>	105.00-160.00	132.29	160.00
				<b>Bulls 1600 lbs+</b>	109.00-127.00	120.79	127.00

Stocker sale at **Maple Hill Auctions Ltd: April 25, 2022 – 478** Stockers

<b>Steers</b>	<b>Price Range</b>	<b>Average</b>	<b>Top</b>	<b>Heifers</b>	<b>Price Range</b>	<b>Average</b>	<b>Top</b>
<b>1000+</b>	175.25-186.00	179.63	186.00	<b>900+</b>	186.00-187.75	186.74	187.75
<b>900-999</b>	188.00-197.25	193.15	197.75	<b>800-899</b>	182.00-187.50	186.08	187.50
<b>800-899</b>	203.00-206.50	205.59	206.50	<b>700-799</b>	185.00-201.00	191.40	201.00

Stocker sale at: **Ontario Stockyards Inc: April 26, 2022 – 1,178** Stockers

<b>Steers</b>	<b>Price Range</b>	<b>Average</b>	<b>Top</b>	<b>Heifers</b>	<b>Price Range</b>	<b>Average</b>	<b>Top</b>
<b>1000+</b>	160.00-180.50	171.02	190.00	<b>800-899</b>	160.00-170.00	162.54	170.00
<b>900-999</b>	177.00-194.00	185.37	194.00	<b>700-799</b>	167.00-204.00	192.25	204.00
<b>800-899</b>	195.00-217.50	206.07	219.50	<b>600-699</b>	187.00-227.00	207.28	227.00
<b>700-799</b>	200.00-244.00	225.17	253.50	<b>500-599</b>	197.00-226.00	214.30	232.00
<b>600-699</b>	233.00-264.00	252.65	272.00	<b>400-499</b>	150.00-233.00	196.03	248.00
<b>500-599</b>	257.50-279.50	269.06	279.50	<b>300-699</b>	140.00-231.00	207.77	231.00
<b>400-499</b>	165.00-282.50	252.93	282.50				

Stockers sold actively on a very strong market.

Stocker sales at **Aylmer Stockyards Inc, April 27, 2022 - 158** stockers

<b>Steers</b>	<b>Price Range</b>	<b>Average</b>	<b>Top</b>	<b>Heifers</b>	<b>Price Range</b>	<b>Average</b>	<b>Top</b>
<b>500-599</b>	123.99-206.00	185.29	206.00	<b>800-899</b>	147.50-162.50	148.99	162.50
<b>400-499</b>	127.49-220.00	191.90	220.00	<b>700-799</b>	107.49-177.49	148.50	177.49
				<b>600-699</b>	142.50-197.50	186.00	197.50
				<b>500-599</b>	107.49-194.99	159.40	194.99
				<b>400-499</b>	102.49-189.99	142.79	212.50
				<b>300-399</b>	144.99-212.99	165.59	212.99

Stocker sales at **Vankleek Hill Livestock Exchange, April 27, 2022 - 129** stockers

<b>Steers</b>	<b>Price Range</b>	<b>Average</b>	<b>Top</b>	<b>Heifers</b>	<b>Price Range</b>	<b>Average</b>	<b>Top</b>
<b>800-899</b>	133.00-207.00	177.81	207.00	<b>700-799</b>	151.00-184.00	165.39	184.00
<b>700-799</b>	178.00-218.00	194.71	218.00	<b>600-699</b>	124.00-187.00	168.15	187.00
<b>600-699</b>	198.00-237.00	219.09	237.00	<b>500-599</b>	123.00-210.00	161.78	210.00
<b>500-599</b>	168.00-249.00	218.36	249.00				

### **WEEKLY LIVE CATTLE EXPORTS-ONTARIO**

	<b>Week ending Apr 9, 2022</b>	<b>Week ending Apr 2, 2022</b>	<b>Year to Date</b>
Total live slaughter cattle exported from Ontario to the U.S.	<b>1,572</b>	<b>2,045</b>	<b>29,234</b>
Steers & Heifers & Cows	1,459	1,885	27,868
Bulls	113	160	1,366

### **CANADIAN- FEDERALLY INSPECTED PROCESSING**

	<b>Week Ending April 23, 2022</b>	<b># of hd change from week ago</b>	<b>YTD</b>	<b>% Change (Week Ago)</b>	<b>% Change (Year Ago)</b>
<b>Grand Total</b>	49,209	+18,109	1,010,277	+37%	+3%
<b>Western Processing</b>	37,779	+16,146	793,309	+43%	+4%
<b>Eastern Processing</b>	11,430	+1,963	216,968	+17%	+0%

### **AVERAGE CARCASS WEIGHTS – CANADA**

	<b>Steers</b>	<b>Heifers</b>
<b>Apr 23, 2022</b>	927	854
<b>Apr 16, 2022</b>	918	851
<b>Apr 24, 2021</b>	922	860

### **USDA ESTIMATED CATTLE PROCESSING VOLUME**

	<b>Week Ending April 30, 2022</b>	<b>Previous Week</b>	<b>Year Ago</b>
<b>Grand Total</b>	656,000	665,000	653,000

### **QUEBEC ELECTRONIC AUCTION MARKET (F.O.B. THE FEEDLOT)**

	<b>Price</b>	<b>Change from Last Week</b>
For the week ending April 28, 2022	303.00-303.25	+0.75

### **ALBERTA DIRECT TRADE**

Alberta's direct trade: for the week ending April 28, 2022

<b>Steers</b>	Live <b>FOB</b>	N/T	Rail <b>Delivered</b>	280.50-282.50
<b>Heifers</b>	Live <b>FOB</b>	N/T	Rail <b>Delivered</b>	N/T

### **U.S. TRADE (U.S. funds)**

The U.S. cash cattle trade: for the week ending April 28, 2022

Choice and Select Steers and Heifers:	Live	139.00-149.00
	Rail	225.00-238.00

## U.S. BOXED BEEF CUT-OUT VALUES (U.S. funds)

	Choice 600-900	Select 600-900
Current Five Day Average	264.64	254.18

### BEEF EXPORTS – CANADA

	United States	Change from last year YTD	Mexico	Change from last year YTD
	Jan 1- Feb 28/2022		Jan 1- Feb 28/2022	
Total	54,762 tonnes	+13% or +6,288 tonnes	4,454 tonnes	+6% or +261 tonnes
	Japan	Change from last year YTD	Viet Nam	Change from last year YTD
	Jan 1- Feb 28/2022		Jan 1- Feb 28/2022	
Total	10,145 tonnes	+25% or +2,024 tonnes	2,428 tonnes	+36% or +647 tonnes

### LIVE CATTLE – CANADA

IMPORTS		Import % change from 2020 YTD	EXPORTS		Export % change from 2021 YTD
Jan 1- Feb 28/2022			Jan 1- Apr 9/22		
Pure bred	1,069	+572	Slaughter steers & heifers & cows	150,346	+11%
Non-pure bred	33,996	-41%	Feeder cattle & calves	87,502	+328%
			Bulls	7,831	+5%

### BEEF PRODUCTION – CANADA

	Jan 1 – Apr 16/22	Last Year Same Time	% Change
Fed	324,240 tonnes	319,401 tonnes	+2%
Non-fed	48,710 tonnes	46,687 tonnes	+4%

### BEEF IMPORTS – CANADA

	Jan 1 – Apr 16/22	Last Year Same Time	% Change
United States	28,659 tonnes	29,573 tonnes	-3%
Non-CUSMA	9,117 tonnes	15,675 tonnes	-42%
EU-27 (beef/veal total)	3,852 tonnes	3,915 tonnes	-2%
Total	45,407 tonnes	52,085 tonnes	-13%

### CHICAGO MERCANTILE EXCHANGE

Closing quotes on futures **today** were as follows:

Live Cattle	Feeder Cattle	Corn
Apr 141.90 +3.40	May 156.35 -1.60	May 8.182 +2.2
Jun 132.65 -1.25	Aug 168.27 -2.12	Jul 8.134 +0.0
Aug 135.27 -1.07	Sep 171.42 -1.97	Sep 7.680 -1.6
Oct 142.47 -0.57	Oct 174.10 -1.67	Dec 7.512 -0.4
Dec 148.45 -0.45	Nov 176.30 -1.42	Mar 7.550 +0.4
Feb 152.37 -0.52	Jan 175.50 -1.50	May 7.560 +0.4

Closing quotes on futures **today** were as follows:

Soybeans	Soft Red Winter Wheat	Canadian \$
May 17.082 +1.6	May 10.436 -30.2	Spot 77.92 -0.16
Jul 16.846 +0.0	Jul 10.556 -30.0	Jun 77.90 -0.16
Aug 16.356 +2.4	Sep 10.582 -26.4	Sep 77.88 -0.15
Sep 15.582 -1.2	Dec 10.582 -25.0	Dec 77.85 -0.16
Nov 15.146 -6.2	Mar 10.574 -24.6	Mar 77.87 -0.16
Jan 15.154 -6.0	May 10.506 -24.4	Jun 77.89 -0.16

Beef Farmers of Ontario, 130 Malcolm Road, Guelph, ON N1K 1B1 Phone: (519) 824-0334 Fax: (519) 824-9101 or email: [markets@ontariobeef.com](mailto:markets@ontariobeef.com)



### **ONTARIO STOCKER & FEEDER TRADE SPECIAL SPRING SALES**

Apr 30	11:00 am	Denfield Livestock Exchange	Bred Cow & Cow/Calf Pair Sale
May 4	10:00 am	Kawartha Lakes Community Sale Barn	Peterborough/Victoria County Spring Stocker
May 5	10:00 am	Grey Bruce Livestock Co-op- Wiarton	Special Spring Stocker Sale
May 6	11:00 am	Community Livestock Exchange	Quinte Cattlemen's Special Stocker Sale
May 7	10:00 am	Algoma Co-op Livestock Sales- Thessalon	Spring Stocker Sale
May 7	11:00 am	Denfield Livestock Exchange	Vaccinated Calves and Yearling Sale
May 7	12:00 pm	Ontario Stockyards Inc	Special Bred Cow Sale
May 11	7:00 pm	Cargill Auction Market	Special Stocker Sale
May 17	11:00 am	Ontario Stockyards Inc	Special All Vaccinated Stocker Sale

### **Comments for the week ending April 28<sup>th</sup>**

Larger volumes of fed steers and heifers came to market this week with auctions reporting 493 head sold, up 37 from last week but 106 fewer than this time last year. Fed steers ranged from \$163.05-\$177.96 averaging \$172.01 down \$1.77 from last week but \$25.10 stronger than year ago prices. Fed heifers ranged from \$161.58-\$178.89 averaging \$173.23 up \$2.59 from the week before and \$30.69 stronger than last year at this time. Auction markets reported trade as stronger with prices reported as steady to \$2.00-\$5.00 cwt higher on the good quality cattle.

The Ontario railgrade market moved higher this week after fifteen straight weeks at \$290.00 dressed, with a slight improvement last week at \$290.00-\$293.00, but majority were at \$290.00. Early this week prices were reported at \$295.00 for steers and \$294.00-\$295.00 for heifers and held steady for the week. Average prices are up \$4.00 cwt from last week with delivery noted mainly for the week of May 16<sup>th</sup>.

Larger receipts of cull cows saw a steady market overall. There were 2,273 fed/cull cows sold through auction markets this week up 394 from last week and 23 more than the same time last year. Cows sold from \$77.83-\$109.81 averaging \$93.36 up \$0.27 from the previous week and \$13.93 stronger than year ago prices. Auction markets reported trade as steady to start the week. Tuesday saw a good active trade with prices ranging anywhere from barely steady to slightly higher. The market ended the week steady to softer. Beef cow volumes were up this week at 687 head which is the largest weekly volume this year. Beef cows averaged \$98.30 cwt down \$1.06 from last week's weighted average beef cow price. Dairy cow volumes are up from recent weeks but are still well below the volumes we normally see this time of year.

Much larger volumes of stocker and feeder cattle were on offer this week with auctions reporting 9,818 head sold up 5,636 from the previous week and 1,534 more than the same time last year. Auction markets reported calves as steady to firm on a strong active trade with vaccinated cattle stronger. Grass types were in strong demand with keen buyer interest reported and prices fully steady to stronger and one market noting prices up \$5.00-\$8.00 cwt. Top quality yearlings were steady until Wednesday when the market was trading stronger on a good demand. Second cut yearlings were noted as easier this week. Actual average prices saw steers 400-500 lbs down \$7.41 from last week, 500-600 lbs up \$6.34, 600-700 lbs up \$7.79, 700-800 lbs up \$6.76, 800-900 lbs up \$0.47, 900-1000 lbs down \$2.99 and steers 1000 lbs and over averaged \$0.80 below last week's weighted average prices. Heifers from 300-400 lbs were down \$22.65 from last week on light receipts, 400-500 lbs up \$0.42, 500-600 lbs up \$2.59, 600-700 lbs up \$6.72, 700-800 lbs up \$7.00, 800-900 lbs up \$21.01 and heifers 900 lbs and over averaged \$15.11 higher than last week's weighted average prices.

The Quebec electronic market this week ranged from \$303.00-\$303.25 dressed cwt on a picked-up basis, up \$0.75 from last week on average.

Alberta direct trade this week was light with prices steady to \$3.00 higher from \$280.00-\$284.00 delivered on a dressed basis. Canfax reports: "Cattle that traded this week were being scheduled for late May/early June delivery. Tentatively new annual price highs were established from both the Alberta and Ontario markets." Heifer trade was too light to establish a price report.

The U.S. cash cattle trade for the week ending April 22<sup>nd</sup> was stronger with the north continuing at a premium to the south. Business in the south was up \$1.00-\$2.00 at mainly \$140.00-\$141.00 live. Dressed deals in the north were up \$5.00-\$6.00 cwt with sales from \$230.00-\$238.00 dressed, mainly \$231.00-\$233.00 with live trade mostly at \$145.00. Final results for the week posted by the USDA Mandatory Price Report saw live steers average \$143.02 up \$2.00 with heifers averaging \$142.91 up \$2.70. On the rail steers averaged \$232.29 up \$6.40 with heifers averaging \$230.95 up \$5.80 from the previous week.

This week, the U.S. cash cattle trade has been active with trade starting on Monday and continuing through to Wednesday with prices holding steady to last week. In the south trade was noted from \$139.00-\$141.00 live, mainly \$140.00. In the north dressed deals ranged from \$225.00-\$238.00, averaging around \$232.00 which is steady on the steers and a touch stronger on the heifers, while live trade in the north ranged from \$145.00-\$148.00, mostly \$145.00-\$147.00 which is steady. At time of reporting the market is quiet with no bids reported. At this point it appears that other than a few clean up deals, this week's trade has been completed.