



Weekly Market Information Report for the week ending Thursday, May 12, 2022

The following information is collected from various sources and disseminated by Beef Farmers of Ontario.

ONTARIO DIRECT TO PACKER RAILGRADE CATTLE TRADE

Prices are on a carcass weight basis before grade and weight discounts. Weekly Range:

A Grade Steers	300.00 (couple at 302.00)
A Grade Heifers	299.00-300.00

ONTARIO LIVE CATTLE TRADE

Ontario auction sales this week saw weighted average price ranges for:

FED CATTLE	Volume	Price Range	Average	Top	Last Week Avg
Large Frame Steers +1250	52	172.27-185.88	180.70	192.25	176.28
Medium Frame Steers +1250	38	158.50-182.01	174.91	191.00	175.53
Large & Medium Frame Steers +1250	90	165.61-185.64	178.87	192.25	175.65
Large Frame Heifers +1000	60	166.02-185.86	172.91	198.50	172.10
Medium Frame Heifers +1000	81	162.93-180.34	172.41	210.00	172.89
Large & Medium Frame Heifers +1000	141	161.86-184.25	172.96	210.00	172.90
Fed steers, Dairy & Dairy Cross +1250	46	125.80-143.65	137.89	161.00	145.34
Fed heifers, Dairy & Dairy Cross +1000	53	105.47-137.65	120.58	153.00	121.10
Cows - All Weights	1,559	84.44-117.24	98.74	146.50	93.23
Bulls - All Weights	124	110.12-134.16	121.81	165.00	118.65

STOCKERS - Large and Medium Frame

STEERS	Volume	Price Range	Average	Top	Last Week Avg
1000+	413	169.60-184.27	177.52	186.75	175.04
900-999	626	179.00-192.87	188.90	197.50	187.02
800-899	500	181.48-212.15	200.27	223.75	199.99
700-799	554	189.97-231.99	215.75	249.00	224.49
600-699	690	209.27-260.28	239.17	275.00	238.53
500-599	498	199.15-261.50	240.63	289.00	246.87
400-499	193	190.94-267.12	244.38	284.00	239.60
-399	43	180.23-245.98	215.93	278.00	222.19

STOCKERS - Large and Medium Frame

HEIFERS	Volume	Price Range	Average	Top	Last Week Avg
+900	245	151.97-172.55	163.67	180.50	159.25
800-899	330	153.68-183.04	170.23	193.75	172.06
700-799	514	159.23-194.63	177.83	208.00	186.11
600-699	685	165.18-211.32	191.92	231.00	192.90
500-599	558	163.43-225.61	200.11	241.00	196.27
400-499	229	150.35-221.91	185.22	257.50	181.08
300-399	51	165.39-200.76	184.82	255.00	210.62
-299	3	N/T	N/T	N/T	N/T

At Kawartha Lakes Community Sale Barn: May 7, 2022 – 223 cows, 12 bulls, 21 veal, 43 stockers, 3 Fed Cattle

	Price Range	Avg.	Top
Cows	87.00-116.00	98.31	131.00
Veal 600 lbs +	131.00-147.50	138.20	147.50
Veal 125 lbs or less	110.00-45332	213.65	453.32

Denfield Livestock Exchange Inc., May 10, 2022: 108 Fed Cattle, 24 Veal, 58 Cows, 3 bulls, 10 stockers

	Price Range	Average	Top
Large & Medium Frame Fed Steers +1250 lbs	168.75-191.75	182.47	192.25
Large & Medium Frame Fed Heifers +1000 lbs	169.50-190.00	181.13	210.00
Cows	90.00-114.00	100.27	123.50
Veal calves 600 lbs +	143.00-158.50	151.65	158.50

At Aylmer Stockyards Inc.: May 11, 2022 – 20 veal, 92 Cows, 32 fed cattle, 5 bulls, 8 stockers

	Price Range	Average	Top
Large & Medium Frame Fed Heifers +1000 lbs	138.99-190.66	154.29	190.99
Fed Heifers, Dairy & Dairy Cross 1000 lbs +	105.00-136.00	117.99	136.00
Cows	75.00-146.50	108.00	146.50
Veal over 600 lbs	113.99-156.00	132.69	156.00

ONTARIO STOCKER & FEEDER TRADE

Stocker sale at Brussels Livestock: May 6, 2022 – 1,272 Stockers

Steers	Price Range	Average	Top	Heifers	Price Range	Average	Top
1000+	173.00-186.75	179.75	186.75	900+	165.00-180.00	172.49	180.00
900-999	182.00-194.00	189.82	194.00	800-899	164.50-193.75	179.75	193.75
800-899	191.00-212.25	203.25	212.25	700-799	164.00-207.00	183.88	207.00
700-799	212.00-242.00	228.01	242.00	600-699	164.00-222.00	201.65	222.00
600-699	244.00-275.00	260.20	275.00	500-599	170.00-234.00	208.19	234.00
500-599	226.00-289.00	263.60	289.00	400-499	125.00-212.00	161.66	253.00
400-499	245.00-284.00	268.89	284.00	300-399	195.00-255.00	235.00	255.00
399-	132.50-278.00	212.88	278.00				

Stocker sale at: Commuity Livestock Exchange: May 10, 2022 – 157 Stockers

Steers	Price Range	Average	Top	Heifers	Price Range	Average	Top
700-799	139.99-214.00	185.00	214.00	700-799	119.99-185.00	161.49	185.00
600-699	157.49-247.99	203.20	247.99	600-699	105.00-208.00	165.70	208.00
500-599	140.99-266.99	220.59	266.99	500-599	132.49-218.99	171.90	218.99
400-499	160.00-266.99	235.70	266.99	400-499	110.00-194.99	153.00	216.99

Stocker sale at: Keady Livestock Market: May 10, 2022 – 1,471 Stockers

Steers	Price Range	Average	Top	Heifers	Price Range	Average	Top
1000+	130.00-183.00	165.29	183.00	900+	164.00-168.00	1677.20	168.00
900-999	192.50-197.50	196.23	197.50	800-899	170.00-178.00	173.20	178.00
800-899	195.50-223.75	210.46	223.75	700-799	175.00-200.00	186.58	200.00
700-799	200.00-230.00	220.17	249.00	600-699	192.50-218.00	206.40	218.00
600-699	240.00-275.00	257.78	275.00	500-599	188.00-233.00	213.29	233.00
500-599	245.00-269.00	259.48	283.00	400-499	155.00-219.00	181.04	219.00
400-499	150.00-271.00	231.77	271.00	300-399	165.00-202.0	181.57	202.50
399-	190.00-240.00	210.31	240.00	Cows	84.00-117.00	106.39	129.00

Stocker sale at: Renfrew Pontiac Livestock: May 10, 2021 – 275 Stockers

Steers	Price Range	Average	Top	Heifers	Price Range	Average	Top
800-899	128.00-189.99	182.29	189.88	900+	102.48-157.00	144.59	157.00
700-799	165.99-222.99	197.59	222.99	800-899	119.99-156.00	132.80	156.00
600-699	183.00-243.00	220.00	243.00	700-799	146.99-175.00	156.80	175.00
500-599	189.99-245.99	240.39	245.99	600-699	135.00-196.99	181.40	196.99
400-499	197.50-270.00	249.59	270.00	500-599	155.00-225.00	211.29	225.00
				400-499	122.50-220.99	194.79	220.99

Stocker sale at **Ontario Livestock Exchange, May 11, 2022 – 368** stockers

Steers	Price Range	Average	Top	Heifers	Price Range	Average	Top
1000+	175.00-186.00	180.15	186.00	900+	140.00-155.00	149.00	155.00
900-999	188.50-196.00	191.05	196.00	800-899			

Stocker sale at **Ontario Livestock Exchange: May 12, 2022 – 225** Stockers

Steers	Price Range	Average	Top	Heifers	Price Range	Average	Top
1000+	162.50-179.00	175.21	179.00	700-799	160.00-172.50	166.56	185.00
900-999	132.50-177.50	159.69	180.00	600-699	155.00-200.00	81.15	200.00
800-899	172.50-210.00	192.50	210.00	500-599	150.00-197.50	180.44	220.00
700-799	190.00-195.00	193.33	202.50	400-499	120.00-197.50	165.50	237.50
600-699	172.50-200.00	186.50	212.00	300-399			
500-599	105.00-225.00	187.98	257.50				

Stocker sale at **Ontario Stockyards Inc, May 12, 2022- 705** stockers

Steers	Price Range	Average	Top	Heifers	Price Range	Average	Top
800-899	185.00-206.00	193.53	206.00	800-899	135.00-163.00	151.66	163.00
700-799	172.50-218.50	196.49	218.50	700-799	140.00-188.00	161.99	188.00
600-699	184.00-249.50	219.25	258.00	600-699	145.00-195.00	166.53	198.00
500-599	180.00-257.50	235.17	267.00	500-599	162.50-219.00	194.60	219.00
400-499	222.50-284.00	261.43	284.00	400-499	146.00-232.50	187.49	240.00

ONTARIO STOCKER & FEEDER TRADE SPECIAL SPRING SALE

Stocker sale at **Community Livestock Exchange: May 6, 2022 – 914** Stockers

Steers	Price Range	Average	Top	Heifers	Price Range	Average	Top
1000+	161.00-183.00	179.00	183.00	900+	150.00-155.00	153.29	155.00
900-999	168.99-190.99	187.00	190.99	800-899	150.00-178.00	168.70	178.00
800-899	150.00-208.00	192.19	208.00	700-799	139.99-193.99	173.90	193.99
700-799	160.00-247.00	217.89	247.00	600-699	132.00-210.99	182.29	210.99
600-699	167.99-260.00	236.90	260.00	500-599	141.99-237.99	200.40	237.99
500-599	185.00-268.00	239.69	268.00	400-499	172.50-257.50	223.89	257.50
400-499	150.00-268.99	248.89	268.99				
399-	235.00-250.00	242.79	250.00				

Quinte Cattlemen's Association Stocker Sale-There was a strong offering of 914 consisting of 549 steers and 365 heifers. Demand was steady and sustained to the end of the sale. Though prices were generally in line with the Ontario market in most categories, the final overall average fell slightly below the wider market. There were 49 consignors and 28 purchasing buyers.

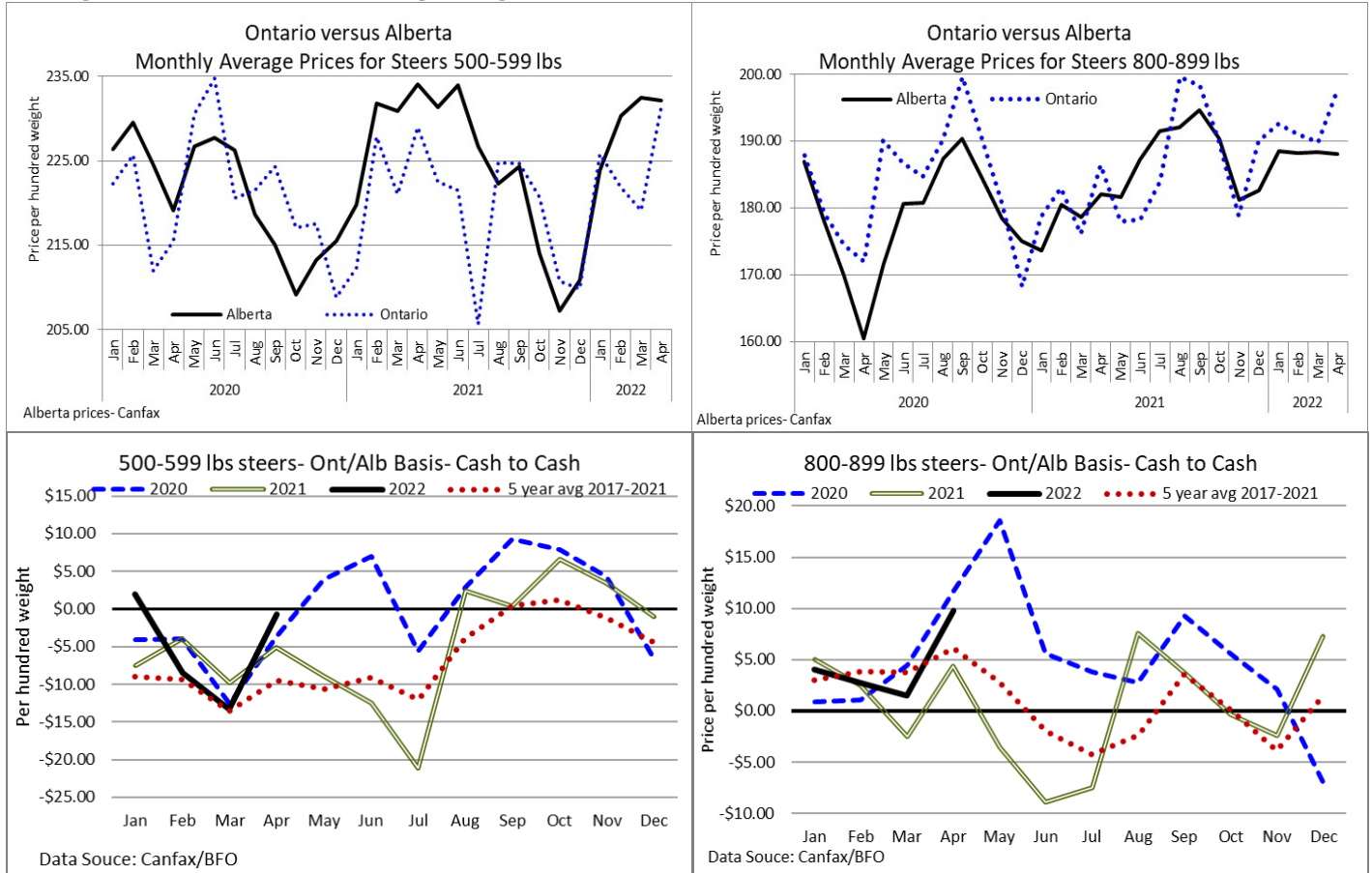
Stocker sale at **Denfield Livestock Exchange: May 7, 2022 – 567** Stockers

Steers	Price Range	Average	Top	Heifers	Price Range	Average	Top
1000+	162.50-175.00	169.56	175.00	900+	151.00-175.00	163.71	180.50
900-999	170.00-187.50	183.00	187.50	800-899	150.00-179.50	168.89	184.0
800-899	186.00-212.00	198.48	212.00	700-799	178.00-198.00	190.01	208.00
700-799	195.00-218.00	209.65	227.00	600-699	185.00-215.00	196.92	231.00
600-699	215.00-247.00	234.78	251.00	500-599	189.00-225.00	202.58	241.00
500-599	252.00-269.00	257.96	269.00	400-499	201.00-235.00	213.80	235.00
400-499	250.00-276.00	264.00	276.00	300-399	200.00-219.00	207.14	219.00
399-	230.00-270.00	248.44	270.00				

Stocker Sale at **Algoma Co-operative Livestock Sales, Thessalon, May 7, 2022- 192 stockers, 14 cows**

Steers	Price Range	Heifers	Price Range
700-800	214.75-215.25	800-900	190.00
600-700	225.00-247.00	600-700	205.25-216.00
500-600	248.00	500-600	209.00-236.00
400-500	245.00	400-500	220.00-225.00
Cows	69.00-92.00		

Bidding was brisk with heifers selling strong.



WEEKLY LIVE CATTLE EXPORTS-ONTARIO

	Week ending Apr 23, 2022	Week ending Apr 16, 2022	Year to Date
Total live slaughter cattle exported from Ontario to the U.S.	1,104	1,686	32,024
Steers & Heifers & Cows	1,021	1,552	30,441
Bulls	83	134	1,583

CANADIAN- FEDERALLY INSPECTED PROCESSING

	Week Ending May 7, 2022	# of hd change from week ago	YTD	% Change (Week Ago)	% Change (Year Ago)
Grand Total	62,851	-3,606	1,139,585	-5%	+3%
Western Processing	48,956	-3,153	894,374	-6%	+4%
Eastern Processing	13,895	-453	245,211	-3%	+1%

ONTARIO- FEDERALLY INSPECTED PROCESSING

	Week Ending May 7, 2022	# of hd change from week ago	YTD	% Change (Week Ago)	% Change (Year Ago)
Grand Total	12,425	-397	220,180	-3%	+1%

AVERAGE CARCASS WEIGHTS – CANADA

	Steers	Heifers
Apr 30, 2022	937	847
Apr 30, 2022	945	854
May 8, 2021	924	853

USDA ESTIMATED CATTLE PROCESSING VOLUME

	Week Ending May 14, 2022	Previous Week	Year Ago
Grand Total	657,000	657,000	644,000

QUEBEC ELECTRONIC AUCTION MARKET (F.O.B. THE FEEDLOT)

	Price	Change from Last Week
For the week ending May 12, 2022	303.50-305.25	+2.19

ALBERTA DIRECT TRADE

Alberta's direct trade: for the week ending May 12, 2022

Steers	Live FOB	N/T	Rail FOB	285.00-288.50
Heifers	Live FOB	171.00	Rail FOB	285.00-288.50

U.S. TRADE (U.S. funds)

The U.S. cash cattle trade: for the week ending May 12, 2022

Choice and Select Steers and Heifers:	Live	137.00-148.00
	Rail	225.00-230.00

U.S. BOXED BEEF CUT-OUT VALUES (U.S. funds)

	Choice 600-900	Select 600-900
Current Five Day Average	256.05	243.42

BEEF EXPORTS – CANADA

	United States	Change from last year YTD	Mexico	Change from last year YTD
	<i>Jan 1- Mar 31/2022</i>		<i>Jan 1- Mar 31/2022</i>	
Total	85,254 tonnes	+13% or +9,707 tonnes	6,652 tonnes	+13% or +752 tonnes
	Japan	Change from last year YTD	Viet Nam	Change from last year YTD
	<i>Jan 1- Mar 31/2022</i>		<i>Jan 1- Mar 31/2022</i>	
Total	13,781 tonnes	+13% or +1,629 tonnes	6,160 tonnes	+153% or +3,724 tonnes

LIVE CATTLE – CANADA

IMPORTS	Import % change from 2020 YTD	EXPORTS	Export % change from 2021 YTD		
<i>Jan 1- Mar 31/2022</i>		<i>Jan 1- Apr 16/22</i>			
Pure bred	1,792	-49%	Slaughter steers & heifers & cows	168,251	+9%
Non-pure bred	51,405	-48%	Feeder cattle & calves	95,750	+263%
			Bulls	9,024	+3%

BEEF PRODUCTION – CANADA

	Jan 1 – Apr 30/22	Last Year Same Time	% Change
Fed	372,141 tonnes	363,347 tonnes	+2%
Non-fed	54,731 tonnes	52,116 tonnes	+5%

BEEF IMPORTS – CANADA

	Jan 1 – Apr 30/22	Last Year Same Time	% Change
United States	32,925 tonnes	33,655 tonnes	-2%
Non-CUSMA	10,332 tonnes	16,201 tonnes	-36%
EU-27 (beef/veal total)	4,194 tonnes	4,230 tonnes	-1%
Total	52,799 tonnes	57,623 tonnes	-8%

CHICAGO MERCANTILE EXCHANGE

Closing quotes on futures **today** were as follows:

Live Cattle			Feeder Cattle			Corn		
Jun	132.07	+0.42	May	157.87	+1.00	May	7.944	-19.0
Aug	132.35	-0.42	Aug	168.02	+1.50	Jul	7.812	-10.2
Oct	139.12	-0.72	Sep	170.67	+1.00	Sep	7.574	-6.2
Dec	145.52	-0.45	Oct	173.05	+0.50	Dec	7.486	-4.2
Feb	150.92	-0.30	Nov	174.90	+0.20	Mar	7.516	-4.4
Apr	154.52	-0.32	Jan	174.50	+0.35	May	7.496	-5.4

Closing quotes on futures **today** were as follows:

Soybeans			Soft Red Winter Wheat			Canadian \$		
May	17.232	+63.0	May	11.672	-7.2	Spot	77.33	+0.83
Jul	16.464	+32.6	Jul	11.774	-1.2	Jun	77.32	+0.85
Aug	15.954	+26.2	Sep	11.810	-0.6	Sep	77.32	+0.86
Sep	15.332	23.0	Dec	11.850	-1.4	Dec	77.31	+0.87
Nov	14.982	+17.6	Mar	11.824	-4.2	Mar	77.32	+0.89
Jan	14.994	+16.6	May	11.610	-8.6	Jun	77.33	+0.91

Beef Farmers of Ontario, 130 Malcolm Road, Guelph, ON N1K 1B1 Phone: (519) 824-0334 Fax: (519) 824-9101 or email: markets@ontariobeef.com

ONTARIO STOCKER & FEEDER TRADE SPECIAL SPRING SALES

May 14	12:00 pm	Ontario Stockyards Inc	Special Bred Cow Sale
May 17	11:00 am	Ontario Stockyards Inc	Special All Vaccinated Stocker Sale
May 18	10:00 am	Kawartha Lakes Community Sales Barn	Special Stocker Sale
May 25	12:30 pm	Aylmer Stockyards Inc	Special Stocker Sale
May 25	1:00 pm	Vankleek Hill Livestock Exchange	Special Stocker Sale
May 25	7:00 pm	Cargill Auction Market Inc	Special Stocker Sale

Comments for the week ending May 12th

Much lighter receipts of fed cattle sold through auction markets this week at 231 head, down 180 from last week and 311 fewer than this time last year. Fed steers traded from \$165.61-\$185.64 averaging \$178.87 up \$3.22 from last week and \$31.62 above year ago prices. Fed heifers ranged from \$161.86-\$184.25 averaging \$172.96 up \$0.06 from the previous week and \$26.10 stronger than last year at this time. Auction markets reported trade as steady to \$3.00 stronger, with one market up \$6.00-\$8.00 cwt.

The Ontario railgrade market this week was at \$300.00 dressed for steers with a handful at \$302.00 for immediate delivery, while a couple of heifer sales were noted from \$299.00-\$300.00, all up \$1.00 from the previous week on average. Cattle that sold this week were for delivery mainly the week of May 23rd, with just a handful of trade for the week of May 16th early in the week, and May 30th late week. Overall sales reported this week were very light in volume. This week's average price is up \$48.00 cwt from this time last year. The last time we saw steers average at or above \$300.00 was the week ending September 17, 2015 at \$302.25.

The Boxed Beef Report by Kevin Grier notes the overview for last week: "After two-three years of incessant and repetitive talk about how demand is the market driver, it has quieted down. It is still good relative to historic norms, but it is not pulling the market and may in fact be called a drag. Prices are too high in the meat case combined with accelerating costs of gasoline and other essentials. Bears will note that the middles are sliding at a time that they should be leading. Bulls can note that the ends are trending sideways and

providing support. Another bullish thought is that beef is looking very cost competitive and is also generating better retailer returns now.”

Much lighter receipts of cull cows also met a stronger demand this week. There were 1,559 fed/cull cows sold through auction markets down 601 from last week and 379 fewer than last year at this time. Cows sold from \$84.44-\$117.24 averaging \$98.74 up \$5.51 cwt from last week and \$20.85 above year ago prices. Auction markets reported active trading at higher prices, up \$2.00-\$5.00 cwt. The beef cows were lighter in volume this week also with a weekly weighted average price of \$103.81 up \$7.16 on average from last week.

Lighter receipts of stocker and feeder cattle were on offer at auction markets this week at 6,132 head, down 1,057 from last week and 749 fewer than the same time last year. Auction markets reported active trading with calves steady to stronger and grass cattle at a premium, up \$10.00-\$20.00 cwt in spots. As the week progressed, calves were steady with quality considered, with heifers under pressure and grass types noted as steady to firm. Yearlings were noted as steady to \$5.00 higher on the steers and \$2.00-\$4.00 stronger on the heifers to start this reporting period, but as the week progressed trade was steady and ended the week with heifers under pressure. Actual average prices this week saw steers 400-500 lbs up \$4.78 from the previous week, 500-600 lbs down \$6.24, 600-700 lbs up \$0.64, 700-800 lbs down \$8.74, 800-900 lb up \$0.28, 900-1000 lbs up \$1.88 and steers 1000 lbs and over averaged \$2.48 higher than last week on average. Heifers from 300-400 lbs were down \$25.80 on light receipts, 400-500 lbs up \$4.14, 500-600 lbs up \$3.84, 600-700 lbs down \$0.98, 700-800 lbs down \$8.28, 800-900 lbs down \$1.83 and heifers 900 lbs and over average \$4.42 higher than last week’s weighted average prices. All categories are trading at prices stronger than last year at this time with the exception of heifers 400-500 lbs which were lower.

The Quebec electronic market this week ranged from \$303.50-\$305.25 dressed cwt on a picked-up basis, up \$2.19 from last week on average.

Alberta direct trade this week was light with prices reported at \$290.00 cwt delivered on a dressed basis, up \$4.00-\$6.00 cwt from last week. Canfax reports: “Cattle that traded this week were being scheduled for the first half of June delivery. Stronger prices and stronger basis levels did encourage producers to market cattle.”

The U.S. cash cattle trade for the week ending May 6th was mainly steady in the north on a live basis with sales from \$145.00-\$147.00 live while dressed trade ranged from \$229.00-\$234.00, steady to a touch softer. In the south trade ranged from \$138.00-\$142.00 live, mostly steady at \$140.00. The overall weekly average prices for last week released by the USDA Mandatory Price report saw live steers average \$143.42 up \$0.08 from the previous week while heifers averaged \$142.52 up \$0.06. On the rail steers averaged \$230.69 dressed down \$1.62 from the week before on average while heifers averaged \$231.86 down \$0.76.

This week, the U.S. cash cattle trade was light to moderate in the south Tuesday with prices from \$139.00-\$141.00 live, mainly \$140.00 which is steady to last week. Light trade in the north was \$1.00-\$2.00 easier with live sales from \$144.00-\$148.00, mostly \$144.00 while dressed trade saw a full range from \$222.00-\$230.00 cwt averaging around \$229.00-\$230.00 which is around \$0.50-\$2.00 cwt easier. Wednesday, some scattered trade was steady to Tuesday at \$137.00-\$140.00 live in the south, majority at \$140.00 with prices at \$230.00 dressed and a few at \$144.00 live in the north. Asking prices are holding at \$140.00 plus live in the south and \$232.00 plus dressed in the north on the few remaining cattle but at time of reporting there are no bids on the table and it appears the bulk of trade is completed.