



## Weekly Market Information Report for the week ending Thursday, November 10, 2022

The following information is collected from various sources and disseminated by Beef Farmers of Ontario.

### ONTARIO DIRECT TO PACKER RAILGRADE CATTLE TRADE

Prices are on a carcass weight basis before grade and weight discounts. Weekly Range:

A Grade Steers	306.00
A Grade Heifers	305.00

### ONTARIO LIVE CATTLE TRADE

Ontario auction sales this week saw weighted average price ranges for:

FED CATTLE	Volume	Price Range	Average	Top	Last Week Avg
Large Frame Steers +1250	125	180.35-187.75	185.19	205.00	182.98
Medium Frame Steers +1250	79	172.42-186.65	181.58	201.00	180.88
Large & Medium Frame Steers +1250	204	179.32-188.20	184.35	205.00	181.73
Large Frame Heifers +1000	57	175.47-185.11	180.83	192.00	170.46
Medium Frame Heifers +1000	92	166.39-184.50	177.30	191.25	180.15
Large & Medium Frame Heifers +1000	149	169.00-185.24	178.89	192.00	178.09
Fed steers, Dairy & Dairy Cross +1250	41	148.59-175.63	165.35	187.25	163.80
Fed heifers, Dairy & Dairy Cross +1000	97	102.37-156.78	136.44	191.00	145.15
Cows - All Weights	2,237	68.02-106.74	85.23	197.79	78.84
Bulls - All Weights	143	100.78-133.40	115.84	235.00	113.28

#### STOCKERS - Large and Medium Frame

STEERS	Volume	Price Range	Average	Top	Last Week Avg
1000+	444	205.40-242.61	225.11	255.00	236.69
900-999	251	214.95-245.61	234.44	262.00	246.13
800-899	140	175.85-265.93	210.89	267.00	237.97
700-799	257	205.61-246.28	230.21	278.00	237.23
600-699	924	228.05-287.38	263.26	317.00	252.10
500-599	1,183	213.65-298.57	268.75	350.00	262.96
400-499	687	235.93-329.77	292.32	367.50	275.87
-399	203	247.33-333.53	293.84	410.00	280.30

#### STOCKERS - Large and Medium Frame

HEIFERS	Volume	Price Range	Average	Top	Last Week Avg
+900	316	172.86-210.40	197.02	223.00	189.35
800-899	170	177.75-219.26	200.78	237.50	204.92
700-799	250	183.31-210.19	198.79	236.50	196.40
600-699	427	189.41-224.41	210.51	243.00	209.43
500-599	870	186.44-240.29	220.04	276.00	220.59
400-499	596	196.73-251.58	229.91	307.50	226.04
300-399	174	212.52-266.54	240.69	325.00	221.43
-299	30	177.08-224.35	199.03	305.00	197.82

At Kawartha Lakes Community Sale Barn: November 5, 2022 – 179 cows, 17 bulls, 12 veal, 10 fed cattle, 43 stockers

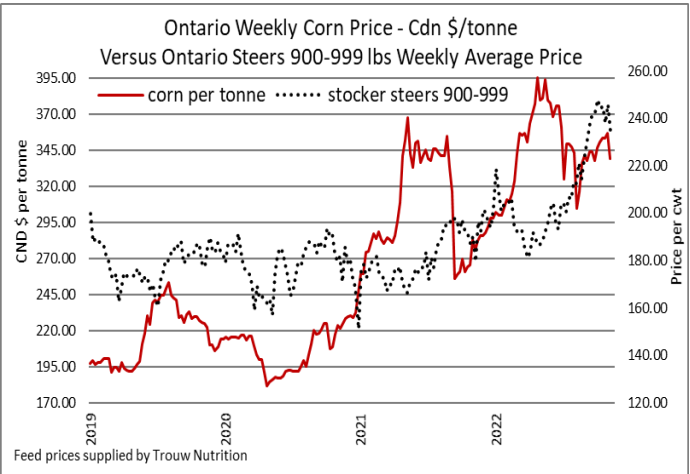
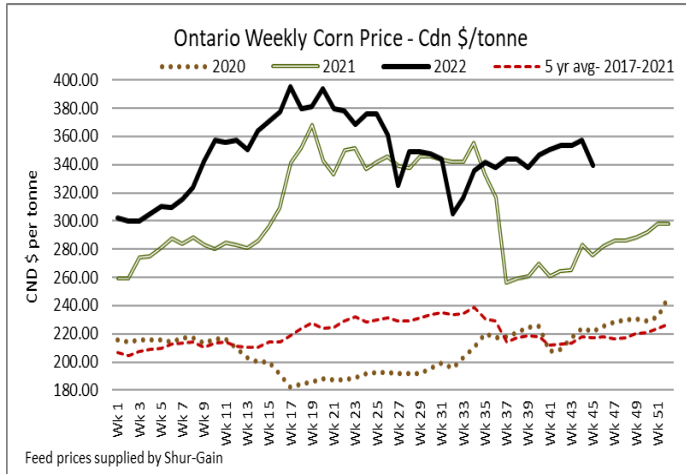
	Price Range	Avg.	Top
Cows	70.00-13.00	84.85	145.00
Bulls under 1600 lbs	110.00-145.00	119.18	145.00
Bulls over 1600 lbs	104.00-118.00	111.17	118.00

**Denfield Livestock Exchange Inc., November 8, 2022: 170 Fed Cattle, 17 Veal, 98 Cows, 7 Bulls**

	Price Range	Average	Top
<b>Large &amp; Medium Frame Fed Steers +1250 lbs</b>	185.00-192.25	187.90	201.00
<b>Large &amp; Medium Frame Fed Heifers +1000 lbs</b>	182.50-189.25	186.01	191.25
<b>Cows</b>	63.00-100.00	83.61	108.00
<b>Veal calves 600 lbs +</b>	165.00-204.50	191.31	205.00

**At Aylmer Stockyards Inc.: November 9, 2022 – 20 veal, 177 Cows, 43 fed cattle, 4 bulls, 30 stockers**

	Price Range	Average	Top
<b>Fed Heifers, dairy &amp; dairy cross 1000+ lbs</b>	93.00-169.99	148.18	169.99
<b>Cows</b>	56.00-127.00	90.00	162.50
<b>Veal 600+ lbs</b>	165.99-210.00	186.49	210.00



**ONTARIO STOCKER & FEEDER TRADE**

**Stocker sale at Brussels Livestock: November 4, 2022 – 1,223 Stockers**

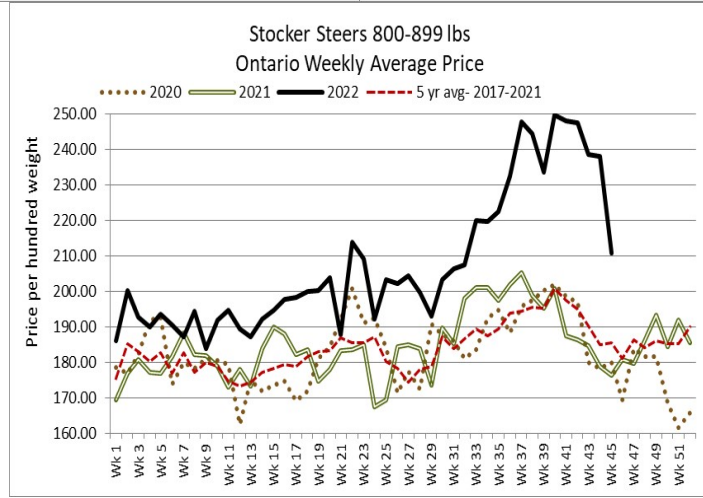
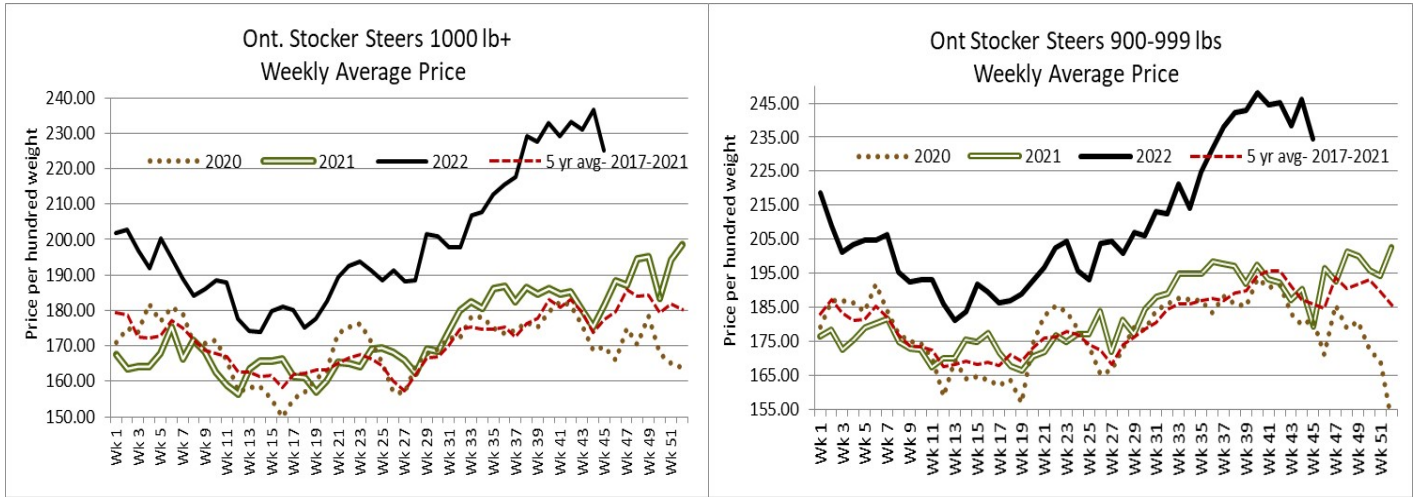
Steers	Price Range	Average	Top	Heifers	Price Range	Average	Top
<b>1000+</b>	217.00-248.00	235.51	251.00	<b>900+</b>	196.50-220.50	212.66	221.00
<b>900-999</b>	226.00-250.25	243.14	250.25	<b>800-899</b>	184.00-230.25	208.28	237.50
<b>800-899</b>	189.00-251.50	221.85	251.50	<b>700-799</b>	185.50-210.00	202.88	210.00
<b>700-799</b>	220.00-244.50	229.75	245.50	<b>600-699</b>	189.00-222.00	211.38	222.00
<b>600-699</b>	241.00-262.50	254.06	269.00	<b>500-599</b>	206.00-245.00	224.32	245.00
<b>500-599</b>	210.00-277.00	255.76	277.00	<b>400-499</b>	197.00-231.00	221.60	231.00
<b>400-499</b>	200.00-284.00	262.74	284.00	<b>300-399</b>	235.00-239.50	238.13	239.50
<b>399-</b>	290.00-305.00	298.44	305.00				

**Stocker sale at Temiskaming Livestock Exchange, November 7, 2022 – 106 stockers**

Steers	Price Range	Average	Top	Heifers	Price Range	Average	Top
<b>700-799</b>	186.00-196.00	190.60	197.50	<b>400-499</b>	190.00-200.00	195.22	211.00
<b>600-699</b>	195.50-220.00	209.45	220.00				
<b>500-599</b>	186.00-247.00	230.00	247.00				
<b>400-499</b>	247.50-268.00	256.61	268.00				
<b>399-</b>	247.50-277.50	270.00	277.50				

**Stocker sale at: Community Livestock Exchange: November 8, 2022 – 132 Stockers**

Steers	Price Range	Average	Top	Heifers	Price Range	Average	Top
<b>700-799</b>	139.99-200.00	172.39	200.00	<b>600-699</b>	139.99-189.99	172.99	189.99
<b>600-699</b>	182.49-254.99	221.39	254.99	<b>400-499</b>	144.99-235.00	198.90	235.00
<b>500-599</b>	160.00-289.00	244.70	289.00				
<b>400-499</b>	180.00-307.50	252.09	307.50				



Stocker sale at: **Keady Livestock Market: November 8, 2022 – 297** Stockers – Presort Sale

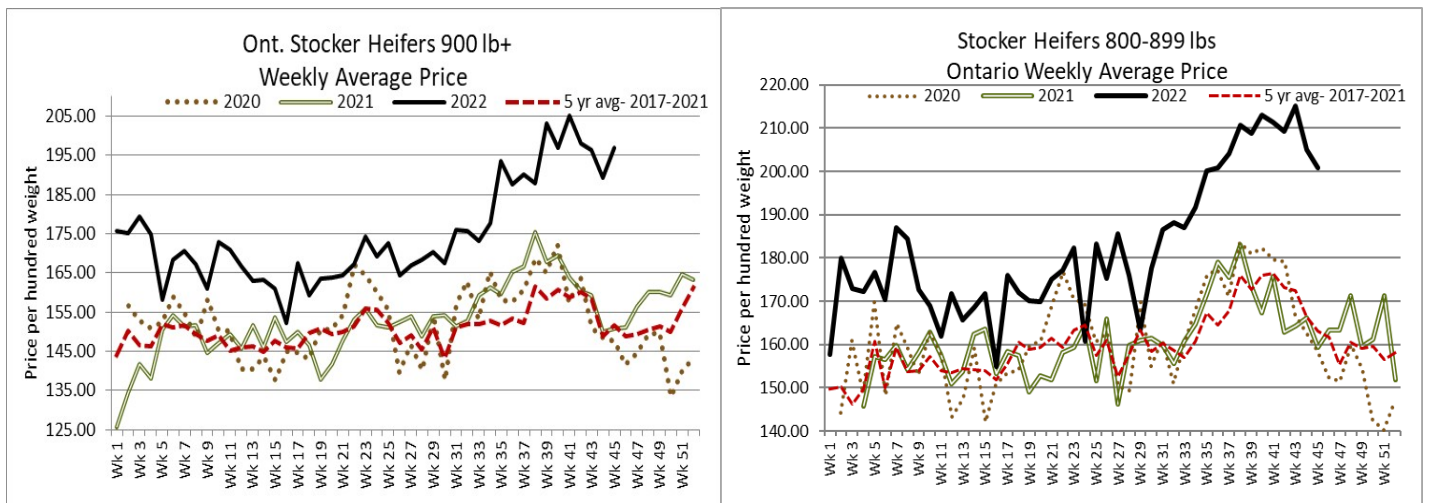
Steers	Price Range	Average	Top	Heifers	Price Range	Average	Top
600-699	195.00-273.00	244.90	273.00	900+	165.00-223.00	213.25	223.00
500-599	255.00-284.00	275.56	284.00	800-899	160.00-195.00	188.00	195.00
400-499	160.00-301.00	262.42	312.50	700-799	206.00-217.00	212.59	217.00
399-	260.00-350.00	328.00	350.00	600-699	191.00-218.00	205.41	218.00
				500-599	170.00-200.00	193.41	250.00
				400-499	240.00-255.00	247.73	266.00
				300-399	255.00-275.00	265.91	312.50

Stocker sale at: **Renfrew Pontiac Livestock: November 8, 2022 – 322** Stockers

Steers	Price Range	Average	Top	Heifers	Price Range	Average	Top
700-799	212.00-231.99	222.69	231.99	700-799	139.99-218.00	186.49	218.00
600-699	200.00-258.00	228.79	268.00	600-699	164.99-229.99	201.90	229.99
500-599	189.99-293.00	238.89	293.00	500-599	137.50-243.99	214.00	243.99
400-499	225.00-310.00	282.10	310.00	400-499	144.99-307.50	225.09	307.50
399-	214.99-310.00	282.79	310.00	300-399	167.50-260.00	218.80	260.00

Stocker sale at **Ontario Livestock Exchange, November 9, 2022 – 313** stockers

Steers	Price Range	Average	Top	Heifers	Price Range	Average	Top
1000+	219.50-255.00	235.38	255.00	900+	201.00-217.00	209.06	217.00
900-999	240.00-262.00	251.77	262.00	800-899	205.00-230.50	216.59	230.50
800-899	250.00-267.00	257.56	267.00				



Stocker sale at **Ontario Livestock Exchange: November 10, 2022 – 325** Stockers

Steers	Price Range	Average	Top	Heifers	Price Range	Average	Top
1000+	130.00-195.00	167.27	195.00	900+	165.00-197.50	187.27	197.50
900-999	85.00-206.00	175.86	206.00	800-899	127.50-190.00	160.00	190.00
800-899	135.00-222.50	182.00	222.50	700-799	140.00-187.50	166.11	187.50
700-799	130.00-210.00	188.93	210.00	600-699	172.50-205.00	194.17	205.00
600-699	170.00-256.00	219.48	256.00	500-599	135.00-207.50	185.12	207.50
500-599	165.00-230.00	206.36	255.00	400-499	150.00-235.00	196.76	235.00
400-499	202.50-270.00	233.15	270.00				
399-	140.00-225.00	187.14	225.00				

Stocker sale at **Ontario Stockyards Inc: November 10, 2022 – 760** Stockers

Steers	Price Range	Average	Top	Heifers	Price Range	Average	Top
1000+	100.00-200.00	141.36	236.00	900+	140.00-190.00	172.62	190.00
900-999	144.00-185.00	154.88	185.00	800-899	141.00-225.00	193.68	225.00
800-899	171.00-232.50	206.85	232.50	700-799	187.50-236.50	210.53	236.50
700-799	187.50-239.00	214.90	250.00	600-699	200.00-243.00	226.64	243.00
600-699	232.50-276.00	254.16	276.00	500-599	195.00-251.00	231.40	252.00
500-599	240.00-290.00	267.32	320.00	400-499	227.50-266.00	245.06	266.00
400-499	274.00-320.00	293.76	327.50	300-399	230.00-325.00	269.83	325.00
399-	270.00-337.50	312.26	365.00	299-	200.00-305.0	234.64	305.00

Stocker sale at **Ottawa Livestock Exchange: November 10, 2022 – 109** Stockers

Steers	Price Range	Average	Top	Heifers	Price Range	Average	Top
600-699	178.00-202.00	193.71	202.00	500-599	172.00-214.00	190.44	238.00
500-599	194.00-242.00	215.50	242.00	400-499	162.00-239.91	212.33	239.91
400-499	212.00-264.00	252.60	264.00				
399-	158.00-200.00	186.80	200.00				

**ONTARIO STOCKER & FEEDER TRADE SPECIAL FALL SALE**

Stocker sale at **Keady Livestock Market: November 4, 2022 – 1,491** Stockers

Steers	Price Range	Average	Top	Heifers	Price Range	Average	Top
700-799	245.00-278.00	265.83	278.00	700-799	180.00-207.50	191.33	207.50
600-699	245.00-317.00	289.26	317.00	600-699	212.50-231.00	224.63	237.50
500-599	265.00-321.00	297.84	321.00	500-599	200.00-239.00	225.29	276.00
400-499	295.00-360.00	330.84	365.00	400-499	205.00-260.00	235.98	275.00
399-	345.00-400.00	364.61	410.00	300-399	255.00-285.00	271.56	290.00

Stocker sale at **Rainy River Cattlemen's Sale (Stratton): November 5, 2022 – 988** Stockers, **223** cows, **23** bulls

Steers	Price Range	Average	Top	Heifers	Price Range	Average	Top
1000+	170.99-175.00	173.39	175.00	900+	84.09-200.00	146.13	200.00
900-999	181.49-220.99	190.99	220.99	800-899	194.99-202.99	199.39	202.99
800-899	152.49-229.00	213.89	229.00	700-799	152.00-204.00	175.49	204.00
700-799	190.99-255.50	227.40	255.50	600-699	175.00-218.00	207.20	218.00
600-699	179.00-295.00	261.50	295.00	500-599	144.99-239.99	214.63	239.99
500-599	164.99-310.00	268.19	310.00	400-499	176.00-243.99	225.30	243.99
400-499	175.00-338.49	275.80	338.49	300-399	187.00-235.99	220.00	235.99
399-	180.00-337.00	268.10	337.00				
				Bulls 1600-	83.99-169.99	109.60	235.00
Cows	71.99-114.50	86.09	197.79	Bulls 1600+	123.99-134.00	128.00	134.00

Stocker sale at **Denfield Livestock Exchange: November 5, 2022 – 808** Stockers

Steers	Price Range	Average	Top	Heifers	Price Range	Average	Top
900-999	222.00-237.00	231.80	237.00	800-899	236.00-17 hd	236.00	236.00
800-899	188.00-241.00	227.76	251.00	700-799	209.00-214.00	212.46	220.00
700-799	210.00-270.00	252.41	270.00	600-699	196.00-230.00	213.37	236.00
600-699	261.00-300.00	279.26	312.00	500-599	210.00-258.00	227.31	271.00
500-599	269.00-309.00	290.53	350.00	400-499	220.00-256.00	245.54	260.00
400-499	285.00-335.00	312.31	367.50	300-399	160.00-275.00	218.72	300.00
399-	236.00-337.50	284.52	360.00	299-	215.00-244.00	233.30	244.00

**ONTARIO BRED COW SALES**

Temiskaming Livestock Exchange, November 4, 2022- 90 Bred cows, 25 Cow calf pairs

	Exotic and Exotic X	British and British X
Top quality bred cows	\$1750-\$2000	\$1400-\$1650
Avg quality bred cows	\$1275-\$1500	\$1100-\$1450
Top quality cow/calf pairs	\$1700-\$2300	\$1500-\$1800
Avg quality cow/calf pairs	\$1300-\$1600	\$1300-\$1500

(prices are per head & per pair)

**WEEKLY LIVE CATTLE EXPORTS-ONTARIO**

	Week ending Oct. 22, 2022	Week ending Oct. 15, 2022	Year to Date
Total live slaughter cattle exported through Ontario ports to the U.S.	1,937	1,779	73,280
Steers & Heifers & Cows	1,813	1,689	68,484
Bulls	124	90	4,796

**CANADIAN- FEDERALLY INSPECTED PROCESSING**

	Week Ending Nov 5, 2022	# of hd change from week ago	YTD	% Change (Week Ago)	% Change (Year Ago)
Grand Total	57,832	-9,140	2,776,836	-14%	-1%
Western Processing	44,035	-9,179	2,198,682	-17%	-1%
Eastern Processing	13,797	+39	578,154	+0%	-0%

**ONTARIO- FEDERALLY INSPECTED PROCESSING**

	Week Ending Nov 5, 2022	# of hd change from week ago	YTD	% Change (Week Ago)	% Change (Year Ago)
Grand Total	12,308	-3	517,980	-0%	-0.02%



### AVERAGE CARCASS WEIGHTS – CANADA

	Steers	Heifers
Nov 5, 2022	972	864
Oct 29 2022	973	862
Nov 6, 2021	946	843

### AVERAGE CARCASS WEIGHTS – ONTARIO

	Steers	Heifers
Nov 5, 2022	974	856
Oct 29 2022	960	828
Nov 6, 2021	947	824

### USDA ESTIMATED CATTLE PROCESSING VOLUME

	Week Ending Nov 12, 2022	Previous Week	Year Ago
Grand Total	671,000	667,000	659,000

### ALBERTA DIRECT TRADE

Alberta's direct trade: for the week ending Nov 10, 2022

<b>Steers</b>	Live FOB	186.00	Rail FOB	298.50-302.50
<b>Heifers</b>	Live FOB	186.00	Rail FOB	298.50-301.00

### U.S. TRADE (U.S. funds)

The U.S. cash cattle trade: for the week ending Nov 10, 2022

Choice and Select Steers and Heifers:	Live	149.00-156.00
	Rail	238.00-244.00

### U.S. BOXED BEEF CUT-OUT VALUES (U.S. funds)

	Choice 600-900	Select 600-900
Current Five Day Average	264.24	235.18

### BEEF EXPORTS – CANADA (AAFC)

	United States Jan 1- Sep 30/2022	Change from last year YTD	Mexico Jan 1- Sep 30/2022	Change from last year YTD
Total	264,515 tonnes	0% or -275 tonnes	19,487 tonnes	+10% or + 1,793 tonnes
	Japan Jan 1- Sep 30/2022	Change from last year YTD	South Korea Jan 1- Sep 30/2022	Change from last year YTD
Total	54,461 tonnes	+21% or + 9,487 tonnes	14,727 tonnes	+81% or + 6,579 tonnes

### LIVE CATTLE – CANADA (AAFC)

IMPORTS		Import % change from 2020 YTD	EXPORTS		Export % change from 2021 YTD
Jan 1- Sep 30/2022			Jan 1- Oct 22/22		
Pure bred	10,264	-25%	Slaughter steers & heifers & cows	389,270	+11%
Non-pure bred	177,082	-43%	Feeder cattle & calves	172,539	+66%
			Bulls	34,929	+12%

### BEEF PRODUCTION – CANADA (AAFC)

	Jan 1 – Oct 29/22	Last Year Same Time	% Change
Fed	948,863 tonnes	943,966 tonnes	+1%
Non-fed	127,893 tonnes	127,460 tonnes	+0%

### BEEF IMPORTS – CANADA (AAFC)

	Jan 1 – Oct 29/22	Last Year Same Time	% Change
United States	89,005 tonnes	82,939 tonnes	+7%
Non-CUSMA	27,054 tonnes	28,026 tonnes	-3%
EU-27 (beef/veal total)	11,928 tonnes	12,621 tonnes	-5%
Total	138,561 tonnes	134,684 tonnes	+3%

### CHICAGO MERCANTILE EXCHANGE

Closing quotes on futures **today** were as follows:

Live Cattle			Feeder Cattle			Corn		
Dec	151.52	-1.55	Nov	176.95	-1.67	Dec	6.580	+4.6
Feb	153.25	-1.77	Jan	178.57	-3.12	Mar	6.630	+3.4
Apr	157.05	-1.45	Mar	181.15	-2.65	May	6.626	+3.2
Jun	153.92	-0.72	Apr	184.60	-2.35	Jul	6.582	+3.0
Aug	153.75	-0.87	May	187.32	-2.22	Sep	6.220	+2.6
Oct	157.42	-0.85	Aug	198.77	-2.07	Dec	6.096	+2.0
Soybeans			Soft Red Winter Wheat			Canadian \$		
Nov	14.554	+25.0	Dec	8.136	+10.2	Spot	75.49	+0.58
Jan	14.500	+27.0	Mar	8.352	+9.4	Dec	75.51	+0.58
Mar	14.536	+25.6	May	8.464	+9.4	Mar	75.63	+0.58
May	14.592	+25.0	Jul	8.524	+9.2	Jun	75.76	+0.59
Jul	14.600	+24.2	Sep	8.602	+9.2	Sep	75.90	+0.59
Aug	14.430	+23.2	Dec	8.702	+9.0	Dec	76.01	+0.58

Beef Farmers of Ontario, 130 Malcolm Road, Guelph, ON N1K 1B1 Phone: (519) 824-0334 Fax: (519) 824-9101 or email: [markets@ontariobeef.com](mailto:markets@ontariobeef.com)

### OBCFPP LICENCE CHANGES

#### Now Licenced: Livestock Dealer

Abattoir Zampini Inc. 1425 Rang L'Achigan Nord, L'Epiphanie QC J5X 3L5

Alain Bergeron, 1627 Calypso Road, Limoges, ON K0A 2M0

William Finlay, 316066 Hwy 6, Williamsford ON N0H 1R0

#### No Longer Licenced: Livestock Dealer

Brent P. Hewitt, Hewitt's Livestock, RR 2, County Road 29, Jasper, ON K0G 1G0

Dufferin County Meats Inc, 35424 7<sup>th</sup> Line, Amaranth, ON L9V 1K6

2758282 Ontario Inc. Kinder Foods, 7392Hwy 89, Mount Forest, ON N0G 2L0

Joe Savage & Fils Abattoir Inc, Savage Abattoir, C.P. 60, 113 Rue Principale, St. Albert, ON K0A 3C0

### ONTARIO STOCKER & FEEDER TRADE SPECIAL FALL SALES

Nov 12	12:00 pm	Ontario Stockyards Inc	Bred Cow & Cow/Calf Pair Sale
Nov 12	1:00 pm	Maple Hill Auctions Ltd	Commercial Bred Heifer Sale
Nov 15	11:00 am	Ontario Stockyards Inc	All Vaccinated Calf Sale
Nov 16	11:00 am	Kawartha Lakes Community Sales Barn	Peterborough/Victoria Counties Special Sale
Nov 18	9:00 am	Keady Livestock Market	Special Local Calf Sale
Nov 19	11:00 am	Denfield Livestock Exchange	Vaccinated Calf & Yearling Sale
Nov 19	1:00 pm	Maple Hill Auctions Ltd	Ontario Shorthorn Sale
Nov 23	7:00 pm	Kawartha Lakes Community Sales Barn	Bred Cow Sale
Nov 25	11:00 am	Community Livestock Exchange (Hoards)	Quinte Cattlemen's All Vaccinated Sale
Nov 25	5:00 pm	Keady Livestock Market	Special Bred Cow & Heifer Sale
Nov 25	6:00 pm	Maple Hill Auctions Ltd	Bred Cow Sale
Nov 26	1:00 pm	Renfrew Pontiac Livestock	Bred Cow & Cow/Calf Pair Sale
Nov 30	11:00 am	Kawartha Lakes Community Sales Barn	Fall Stocker Sale
Nov 30	12:00 pm	Aylmer Stockyards Inc	Stocker Sale
Nov 30	1:00 pm	Vankleek Hill Livestock Exchange	Stocker Sale

## Comments for the week ending November 10, 2022

There were 353 fed steers and heifers sold through auction markets this week down 86 head from last week but 91 more than this time last year. Fed steers sold from \$79.32-\$188.20 averaging \$184.35 up \$2.62 from the previous week and \$36.44 above year ago prices. Fed heifers ranged from \$169.00-\$185.24 averaging \$178.89 up \$0.80 from last week and \$26.28 stronger than this time last year. Auction markets reported trade as active with prices steady and strong to slightly higher, and ended the week up \$1.00 cwt.

The Ontario railgrade market reported this week was limited with prices sitting at \$306.00 dressed for steers and \$305.00 for heifers, steady to the top of last week's trade but \$1.50 higher on average. Delivery of the cattle sold this week started out the previous Friday for the week of November 14<sup>th</sup> but by Monday, delivery was being scheduled for the week of November 21<sup>st</sup>. Prices this week are up \$36.00 cwt from the same time last year.

2,237 fed/cull cows sold through auction markets this week down 130 head from last week and 370 fewer than the same week last year, on good demand. Cows ranged from \$68.02-\$106.74 averaging \$85.23 up \$6.39 from last week and \$22.68 stronger than year ago prices. Auction markets reported trade as active on good demand with prices from steady to stronger. By mid-week trade was stronger on the good quality cows while plainer types were steady to slightly stronger. The market ended the week stronger. 722 of this week's offering were beef breeds, up 53 head from last week, averaging \$87.80 up \$6.47 cwt from last week's weighted average beef cow price.

There were 6,922 stocker and feeder cattle sold through auctions this week down 513 head from the previous week but 346 more than the same week last year. Auction markets reported calves as selling on a strong active trade with prices steady to fully steady with good quality trading very strong. Yearlings sold mainly at steady prices but by mid-week the market was steady to stronger. Actual average prices saw steers 400-500 lbs down \$3.87 from last week, 500-600 lbs down \$3.76, 600-700 lbs down \$3.74, 700-800 lbs down \$5.75, 800-900 lbs down \$6.98, 900-1000 lbs down \$11.69 and steers 1000 lbs and over averaged \$11.58 easier than last week's weighted average prices. Heifers from 300-400 lbs were down \$1.66, 400-500 lbs down \$0.43, 500-600 lbs down \$0.10, 600-700 lbs up \$1.13, 700-800 lbs down \$1.22, 800-900 lbs down \$4.14 while heifers 900 lbs plus averaged \$7.67 stronger than last week on average. Average prices continue at a premium to this time last year by \$35.00-\$65.00 cwt on the steers and \$33.00-\$45.00 cwt on the heifers.

Alberta direct trade was light this week with sales reported from \$300.00-\$304.00 delivered on a dressed basis, which is steady to \$4.00 cwt easier, all to local packers. The U.S. did purchase some cattle this week at \$234.00 US delivered which is at a premium to the local packers, however Canfax notes that the cattle had to "fit the grade". Cattle sold locally this week are for delivery mid-December. Alberta is closed today in observation of Remembrance Day.

The U.S. cash cattle trade the week ending November 4<sup>th</sup> was light to moderate with sales mainly steady, to \$2.00 cwt higher. Business in was from \$150.00-\$152.00 live, mainly \$150.00 which is fully steady. In the north live trade ranged from \$153.00-\$155.00 live, steady to \$2.00 stronger, with dressed deals ranging from \$236.00-\$245.00, mainly \$242.00 cwt up \$2.00 from the previous week. Overall average prices for the week reported by the USDA Mandatory Price Report saw live steers average \$151.98 and heifers \$152.15 both up \$0.03 from the previous week on average. On the rail steers averaged \$241.90 up \$2.05 cwt and heifers \$241.61 up \$1.88 from the week before.

This week the U.S. cash cattle trade was quiet the first part of the week as the U.S. concentrated on the elections on Tuesday. Wednesday and Thursday saw light to moderate trade which was fully steady to last week, although producers were hoping for higher prices. In the south trade was from \$149.00-\$151.00, mainly \$150.00 live while the north was reported from \$153.00-\$156.00 live, mostly \$153.00 with dressed trade from \$238.00-\$244.00, majority at \$242.00 which is also steady. Some clean up trade is possible Friday but it appears the bulk of trade is completed. Asking prices on the remaining cattle are \$151.00 live in the south and \$244.00 dressed in the north.